



COMMERCIAL
ASSET GROUP

Jeffrey E. Resnick

310.922.1717

jresnick@cagre.com

Lic. 0040533

Adam Funk

310.666.0124

afunk@cagre.com

Lic. 02129715

Alex Shabani

310.272.7397

alex@cagre.com

Lic. 01352902

TURNKEY MEDICAL OFFICE AVAILABLE FOR LEASE

**10309 SANTA MONICA BLVD
LOS ANGELES, CA 90025**



SPACE SIZE

P3: $\pm 1,650$ RSF

RENTAL RATE

\$4.75 PSF/MO, FSG

TERM

3 - 5 YEARS

PARKING

\$175/MO

AVAILABILITY

IMMEDIATELY

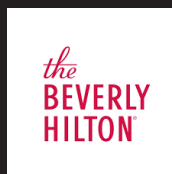
These figures are based on information and content provided by others, which we believe are accurate. No guarantee, warranty or representation is made by Commercial Asset Group, Inc. or its personnel. All interested parties must independently verify accuracy and completeness. As well, any projections, assumptions, opinion, or estimates are used for example only and do not represent the current or future performance of the identified property. Your tax, financial, legal and toxic substance advisors should conduct a careful investigation of the property and its suitability for your needs, including land use limitations. The property is subject to prior lease, sale, change in price, or withdrawal from the market without notice.

- Turnkey medical office space (shared with an OBGYN)
- Entire floor is approximately 6,500 SF
- $\pm 1,650$ SF configuration - consisting of 5 exam rooms "sinks", 3 private offices facing Santa Monica Blvd, 2 restrooms, 2 exits, common areas and access to shared reception desk



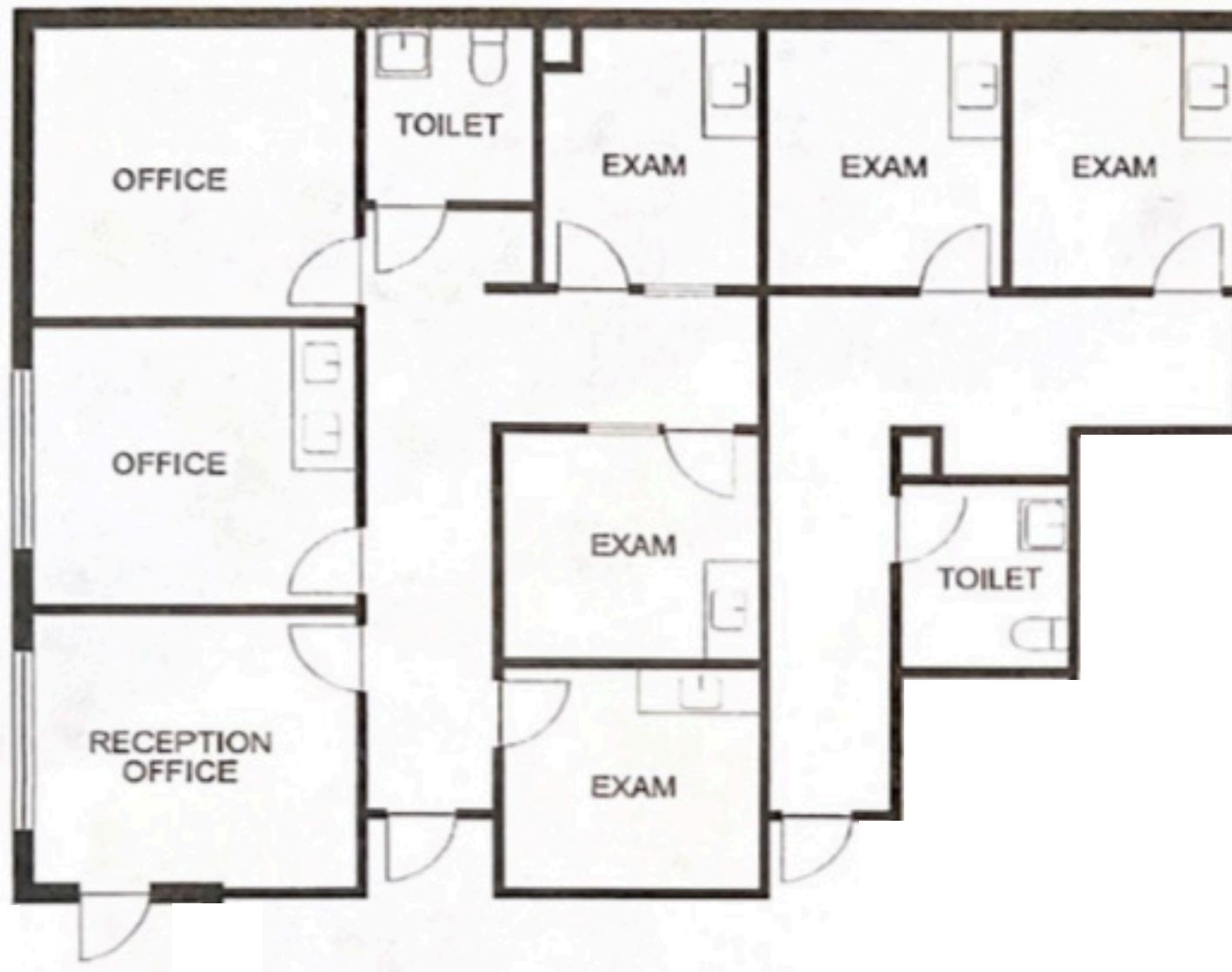
10309
SANTA MONICA BLVD

NEIGHBORING TENANTS



FLOORPLAN

±1,650 SF



INTERIOR PHOTOS



Jeffrey E. Resnick

310.922.1717

jresnick@cagre.com

Lic. 0040533

Adam Funk

310.666.0124

afunk@cagre.com

Lic. 02129715

Alex Shabani

310.272.7397

alex@cagre.com

Lic. 01352902



Commercial Asset Group

1801 Century Park East, Ste 1550

Los Angeles, CA 90067

P 310.275.8222 F 310.275.8223

www.cagre.com Lic. 01876070



**COMMERCIAL
ASSET GROUP**