

SANTA CLARA LAND

| FOR SALE



PROPERTY DETAILS

Santa Clara, UT

- 1,562.41 total acres
- 18 parcels

NEWMARK



MOUNTAIN WEST

ROBERT KINGSFORD,

SIOR, CCIM

rkingsford@newmarkmw.com

direct 801.895.3040

[View Profile](#)

BRENT PACE

Pace Real Estate

brent@odysseyptrs.com

direct 801.450.8316

FULL SERVICE

COMMERCIAL REAL ESTATE

312 East South Temple

Salt Lake City, Utah 84111

Office 801.456.8800

www.newmarkmw.com

This statement with the information it contains is given with the understanding that all negotiations relating to the purchase, renting or leasing of the property described above shall be conducted through this office. The above information while not guaranteed has been secured from sources we believe to be reliable.



NEWMARK



MOUNTAIN WEST

ROBERT KINGSFORD,
SIOR, CCIM

rkingsford@newmarkmw.com

direct 801.895.3040

[*View Profile*](#)

BRENT PACE

Pace Real Estate

brent@odysseyptrs.com

direct 801.450.8316

FULL SERVICE
COMMERCIAL REAL ESTATE

312 East South Temple

Salt Lake City, Utah 84111

Office 801.456.8800

www.newmarkmw.com

NEWMARK



MOUNTAIN WEST

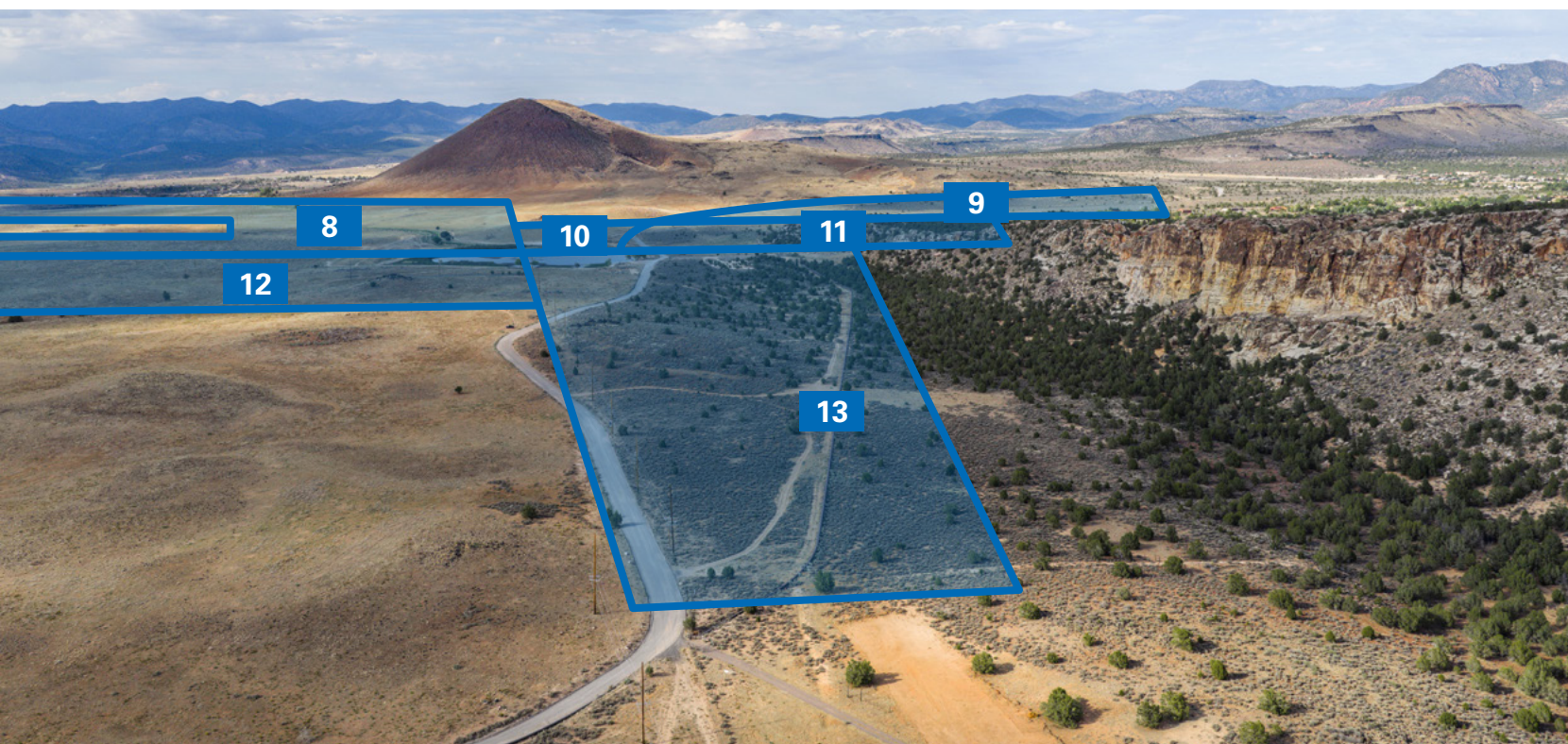
ROBERT KINGSFORD,
SIOR, CCIM

rkingsford@newmarkmw.com
direct 801.895.3040

[*View Profile*](#)

BRENT PACE

Pace Real Estate
brent@odysseyptrs.com
direct 801.450.8316



FULL SERVICE
COMMERCIAL REAL ESTATE

312 East South Temple
Salt Lake City, Utah 84111
Office 801.456.8800
www.newmarkmw.com



NEWMARK



MOUNTAIN WEST

ROBERT KINGSFORD,
SIOR, CCIM

rkingsford@newmarkmw.com

direct 801.895.3040

[*View Profile*](#)

BRENT PACE

Pace Real Estate

brent@odysseyptrs.com

direct 801.450.8316

FULL SERVICE

COMMERCIAL REAL ESTATE

312 East South Temple

Salt Lake City, Utah 84111

Office 801.456.8800

www.newmarkmw.com

NEWMARK



MOUNTAIN WEST

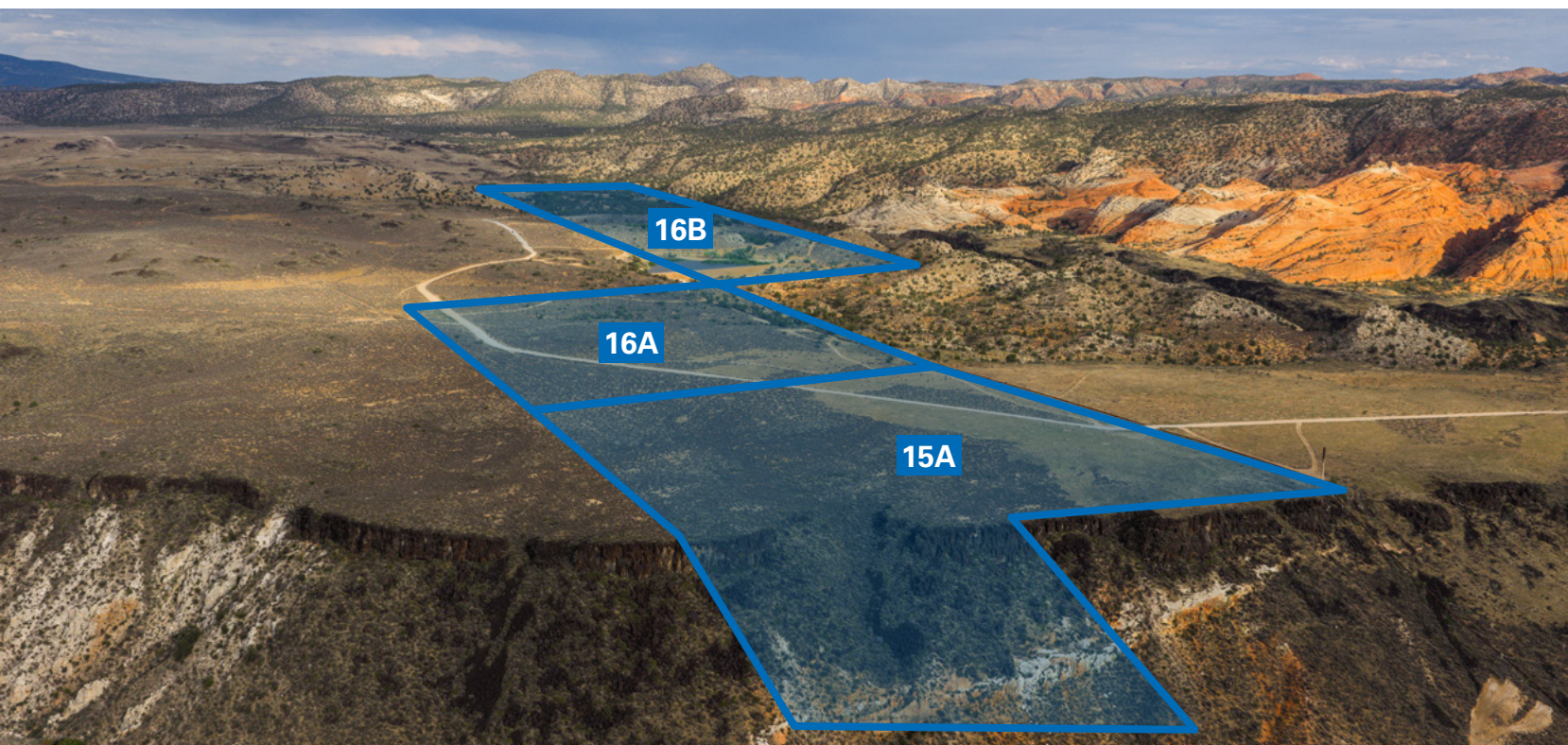
ROBERT KINGSFORD,
SIOR, CCIM

rkingsford@newmarkmw.com
direct 801.895.3040

[*View Profile*](#)

BRENT PACE

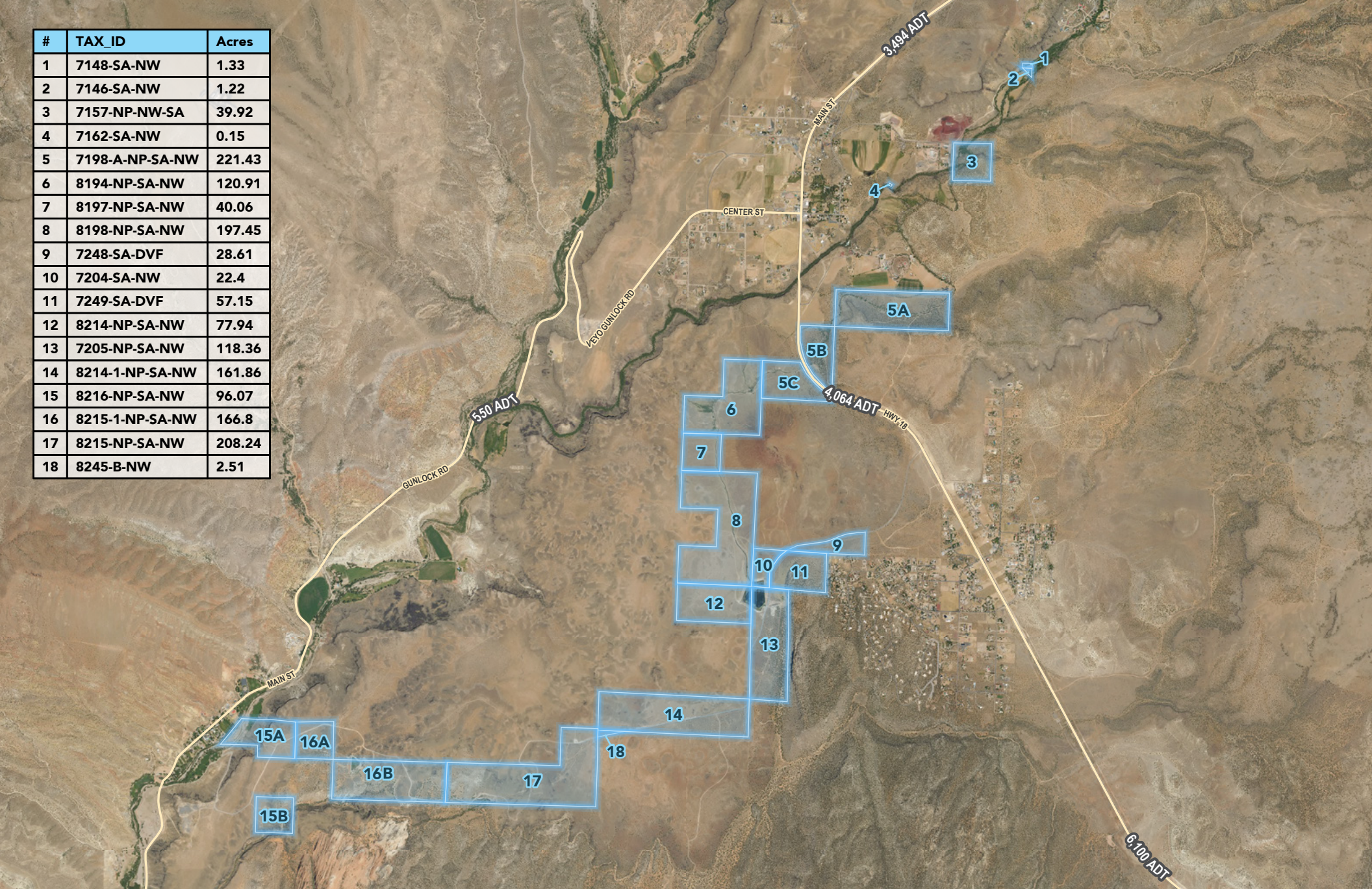
Pace Real Estate
brent@odysseyptrs.com
direct 801.450.8316



FULL SERVICE
COMMERCIAL REAL ESTATE

312 East South Temple
Salt Lake City, Utah 84111
Office 801.456.8800
www.newmarkmw.com

#	TAX_ID	Acres
1	7148-SA-NW	1.33
2	7146-SA-NW	1.22
3	7157-NP-NW-SA	39.92
4	7162-SA-NW	0.15
5	7198-A-NP-SA-NW	221.43
6	8194-NP-SA-NW	120.91
7	8197-NP-SA-NW	40.06
8	8198-NP-SA-NW	197.45
9	7248-SA-DVF	28.61
10	7204-SA-NW	22.4
11	7249-SA-DVF	57.15
12	8214-NP-SA-NW	77.94
13	7205-NP-SA-NW	118.36
14	8214-1-NP-SA-NW	161.86
15	8216-NP-SA-NW	96.07
16	8215-1-NP-SA-NW	166.8
17	8215-NP-SA-NW	208.24
18	8245-B-NW	2.51



ROBERT KINGSFORD, SIOR, CCIM
rkingsford@newmarkmw.com
direct 801.895.3040
[View Profile](#)

BRENT PACE
Pace Real Estate
brent@odysseyptrs.com
direct 801.450.8316

**FULL SERVICE
COMMERCIAL REAL ESTATE**
312 East South Temple
Salt Lake City, Utah 84111
Office 801.456.8800
www.newmarkmw.com