

# 2660

## WILLAMETTE DRIVE NE

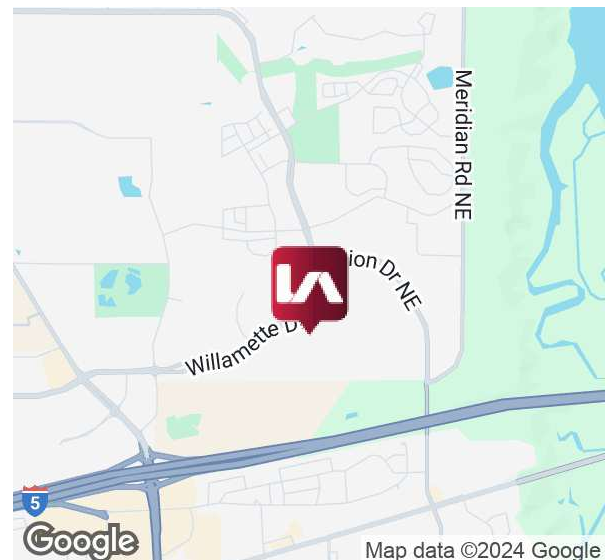
### 76,250 SF Industrial Lease



#### LISTING INFORMATION

<b>ADDRESS:</b>	2660 Willamette Drive NE, Lacey, WA
<b>AVAILABLE SF:</b>	16,925 SF - 76,250 SF
<b>OFFICE AREA:</b>	7,150 SF (BTS Available)
<b>LEASE RATE:</b>	Call for Rates
<b>LOADING:</b>	18 Dock High 8 Ramped
<b>SPECIALTY LOADING:</b>	Ability to add 20' wide loading
<b>SPRINKLERS:</b>	ESFR
<b>POWER:</b>	3,000 Amp 3-Phase, 480v
<b>CLEAR HEIGHT:</b>	24'
<b>COMMENTS:</b>	Existing Racking in Suite A: 25,475 SF

#### LOCATION



*The information provided herein is from sources we deem reliable, however it is provided without any guarantee or representation as to its accuracy. Prospective parties should independently verify all information prior to entering into any agreements.*

**LEE & ASSOCIATES**  
COMMERCIAL REAL ESTATE SERVICES



# 2660

## WILLAMETTE DRIVE NE

76,250 SF Industrial Lease

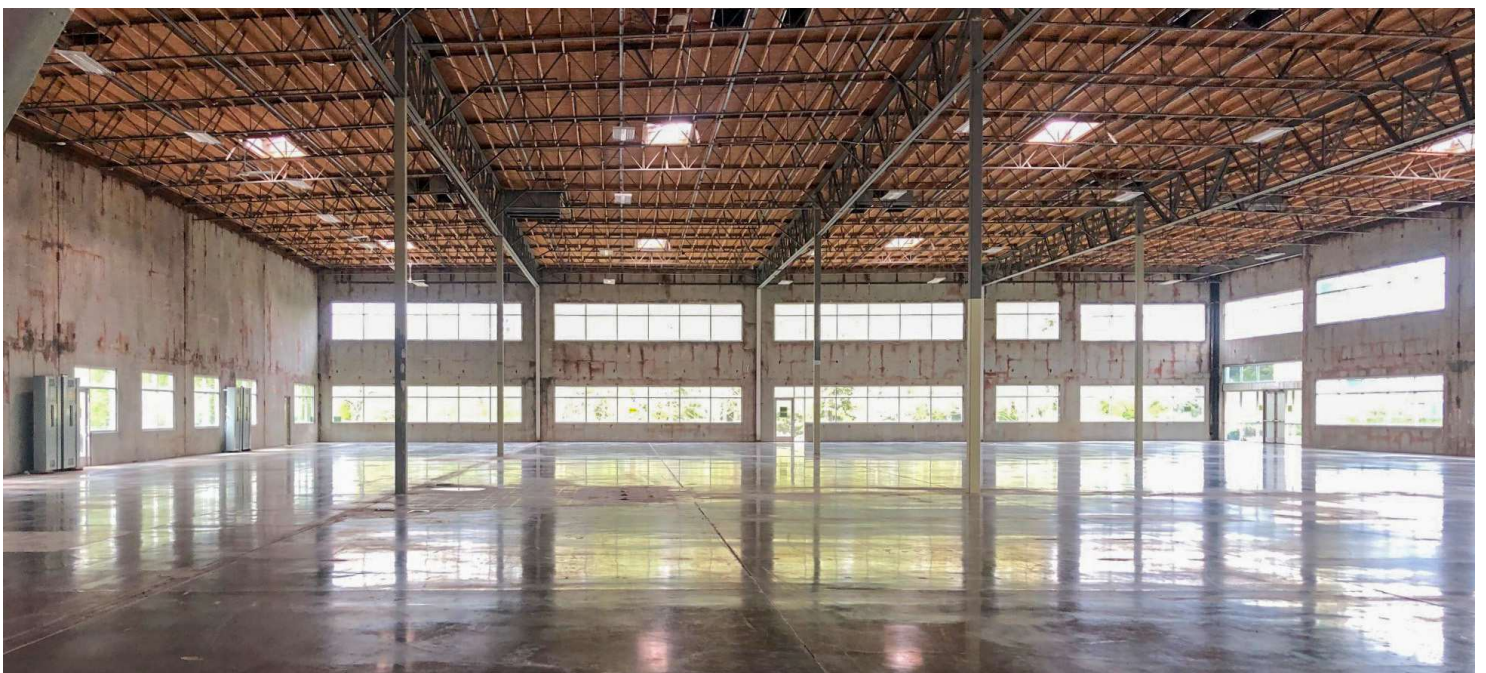
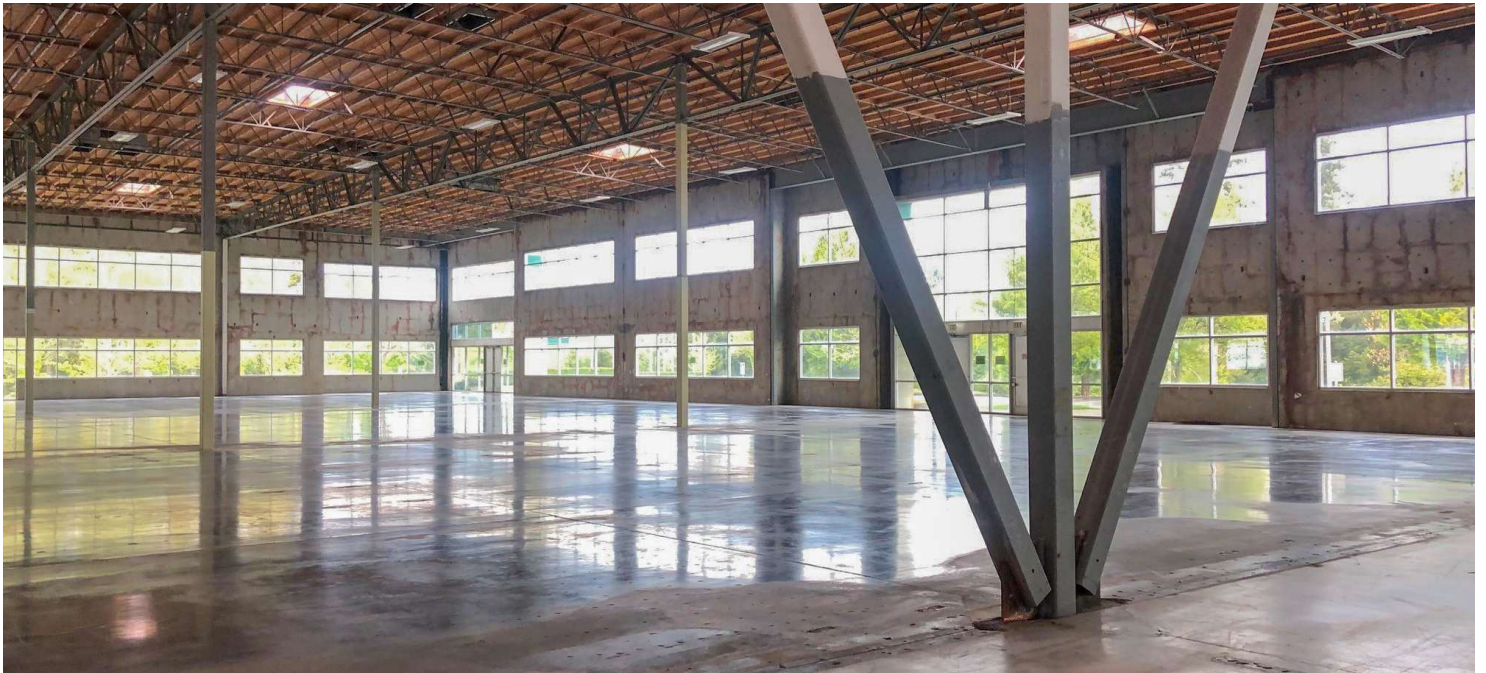


Vanessa Herzog, SIOR, CCIM  
vherzog@lee-associates.com  
253.444.3020

Billy Moultrie  
bmoultrie@lee-associates.com  
253.444.3022

Andrew Hull  
ahull@lee-associates.com  
253.444.3023

Justin Froelich  
jfroelich@lee-associates.com  
253.238.0047



**2660**  
WILLAMETTE DRIVE NE

76,250 SF Industrial Lease

Vanessa Herzog, SIOR, CCIM  
vherzog@lee-associates.com  
253.444.3020

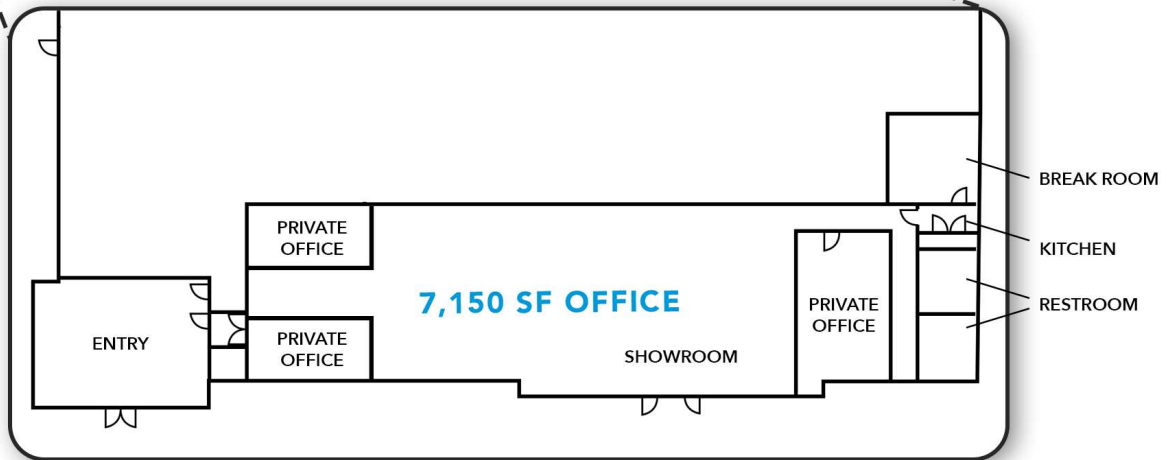
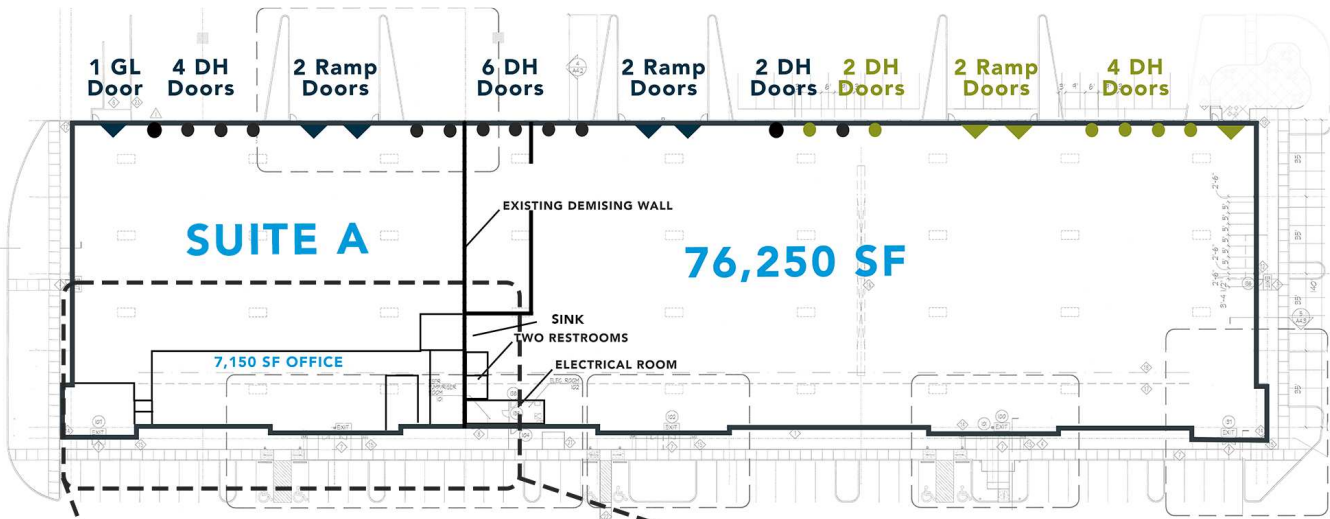
Billy Moultrie  
bmoultrie@lee-associates.com  
253.444.3022

Andrew Hull  
ahull@lee-associates.com  
253.444.3023

Justin Froelich  
jfroelich@lee-associates.com  
253.238.0047

**OPTION 1**

■ Future Loading  
■ Existing Loading





# 2660

## WILLAMETTE DRIVE NE

### 76,250 SF Industrial Lease

Vanessa Herzog, SIOR, CCIM  
vherzog@lee-associates.com  
253.444.3020

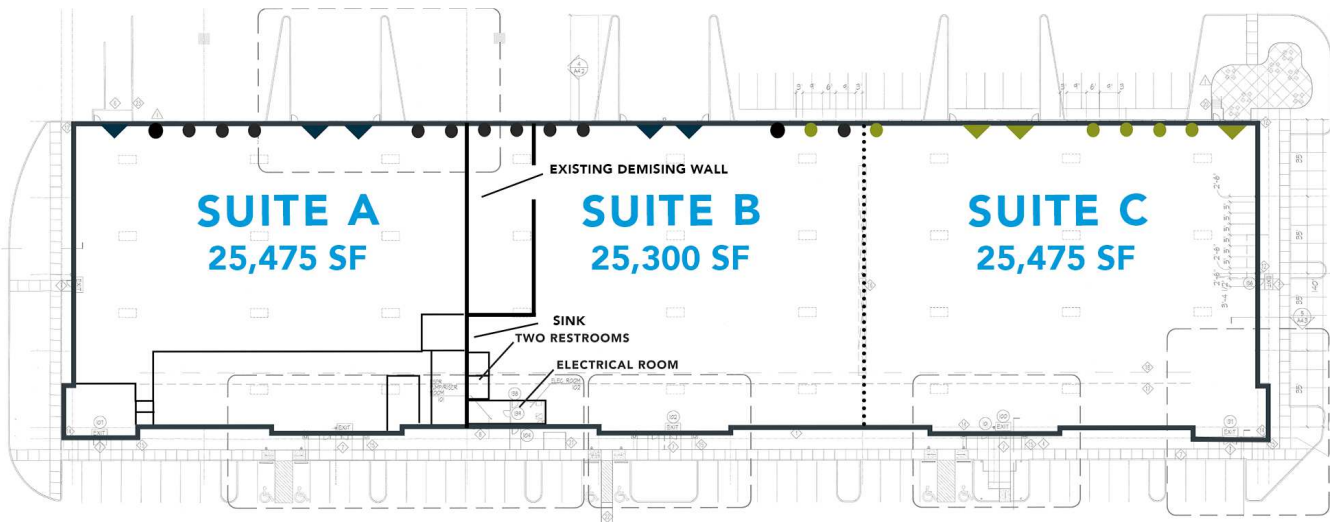
Billy Moultrie  
bmoultrie@lee-associates.com  
253.444.3022

Andrew Hull  
ahull@lee-associates.com  
253.444.3023

Justin Froelich  
jfroelich@lee-associates.com  
253.238.0047

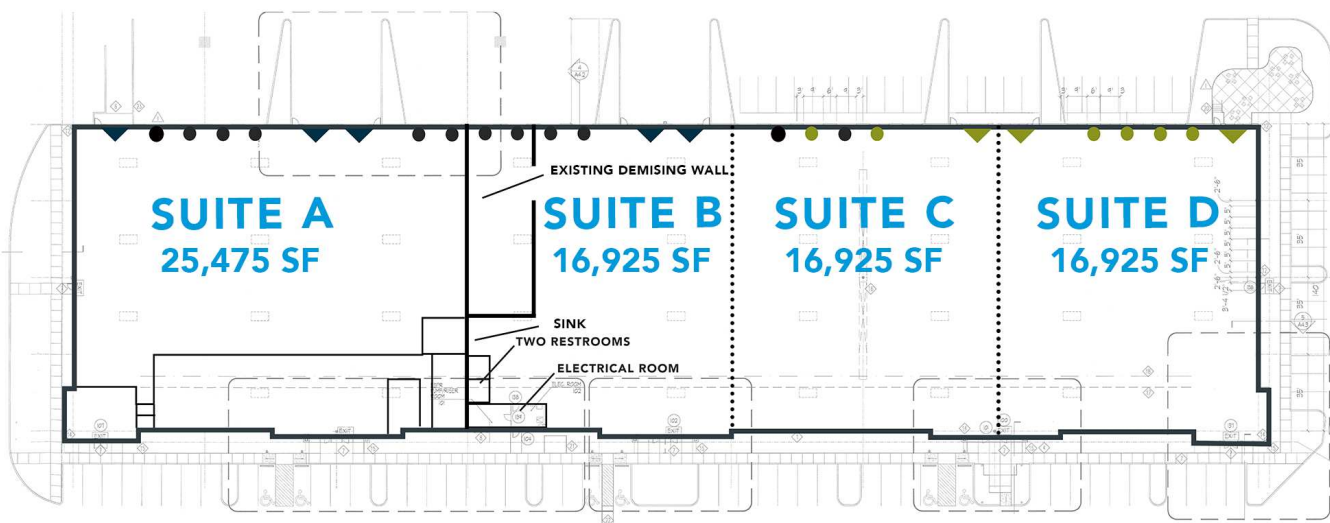
## OPTION 2

■ Future Loading  
■ Existing Loading



## OPTION 3

■ Future Loading  
■ Existing Loading





# 2660

## WILLAMETTE DRIVE NE

76,250 SF Industrial Lease

Vanessa Herzog, SIOR, CCIM  
vherzog@lee-associates.com  
253.444.3020

Billy Moultrie  
bmoultrie@lee-associates.com  
253.444.3022

Andrew Hull  
ahull@lee-associates.com  
253.444.3023

Justin Froelich  
jfroelich@lee-associates.com  
253.238.0047

