

FOR SALE



16703 Harvard

Cleveland, OH 44128



Kas Filippova

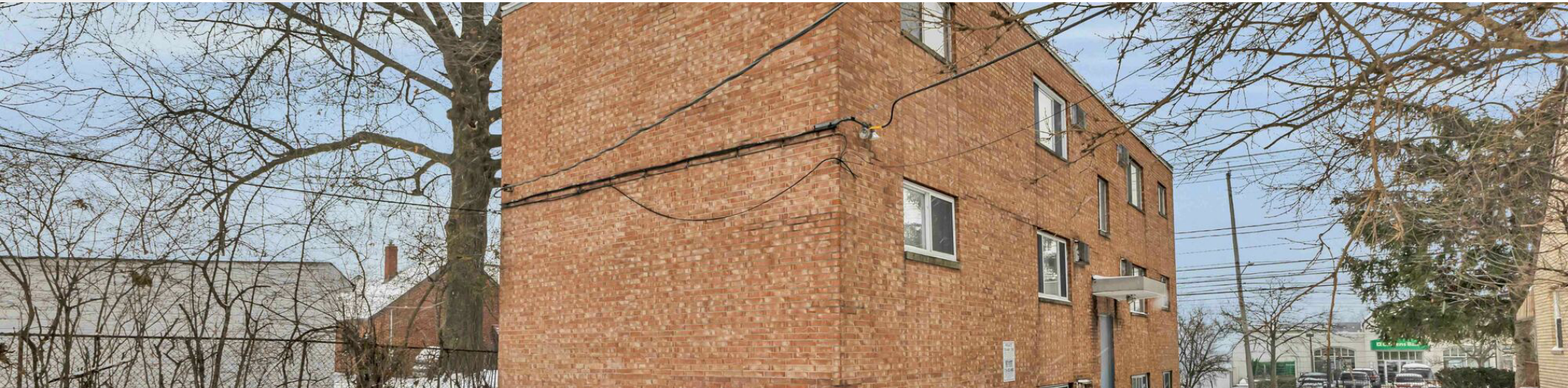
216.374.3689

kas.filippova@expcommercial.com

www.expcommercial.com

Property Summary

FOR SALE



PROPERTY DESCRIPTION

Well-maintained 6-unit multifamily property featuring a desirable unit mix of three 2-bedroom apartments and three 1-bedroom apartments.

Only one unit is currently vacant (can be leased prior to closing). The remaining units are occupied, including long-term residents, with one unit on a month-to-month lease.

Recent capital improvements include a new sealed roof (2024), new hot water heater, and a foundation moisture barrier installed at the rear of the building, along with updated flooring, paint, and select appliances. The property also features an on-site parking lot. Tenants pay gas and electricity; the owner covers water, sewer, and trash. This is a low-maintenance, income-producing multifamily investment in strong rental condition with upside potential.

OFFERING SUMMARY

Sale Price:	\$525,000
Number of Units:	6
Lot Size:	0.13 Acres
Building Size:	3,700 SF
NOI:	\$43,068.00
Cap Rate:	8.2%

Kas Filippova

216.374.3689

kas.filippova@expcommercial.com



eXp Commercial, LLC, its direct and indirect parents and their subsidiaries (together, "We") obtained the information above from sources believed to be reliable, however, We have not verified its accuracy and make no guarantee, warranty or representation, expressed or implied, about such information. The information contained above is submitted subject to the possibility of errors, omissions, price changes, rental or other conditions, prior sale, lease or financing, or withdrawal without notice. Any projections, opinions, assumptions or estimates of the information contained above or provided in connection therewith, either expressed or implied, are for example only, and they may not represent current or future performance of the subject property. You, together with your tax and legal advisors, should conduct your own thorough investigation of the subject property and potential investment.

Property Description

FOR SALE



PROPERTY DESCRIPTION

Well-maintained 6-unit multifamily property featuring a desirable unit mix of three 2-bedroom apartments and three 1-bedroom apartments.

Only one unit is currently vacant (can be leased prior to closing). The remaining units are occupied, including long-term residents, with one unit on a month-to-month lease.

Recent capital improvements include a new sealed roof (2024), new hot water heater, and a foundation moisture barrier installed at the rear of the building, along with updated flooring, paint, and select appliances. The property also features an on-site parking lot. Tenants pay gas and electricity; the owner covers water, sewer, and trash. This is a low-maintenance, income-producing multifamily investment in strong rental condition with upside potential.

LOCATION DESCRIPTION

6703 Harvard Rd is located in Cleveland's Lee-Miles neighborhood, along Harvard Road, a major east-west corridor serving the city's southeast side. The area is supported by a strong base of long-term and workforce renters, driving consistent multifamily demand.

The property offers convenient access to Lee Road, Miles Avenue, I-480, and public transportation, providing connectivity to Downtown Cleveland, University Circle, and regional employment centers. The surrounding neighborhood includes essential retail, services, and community amenities.

Lee-Miles is characterized by stabilized multifamily housing and steady occupancy, making it well-suited for investors seeking durable cash flow and long-term hold potential.

Kas Filippova

216.374.3689

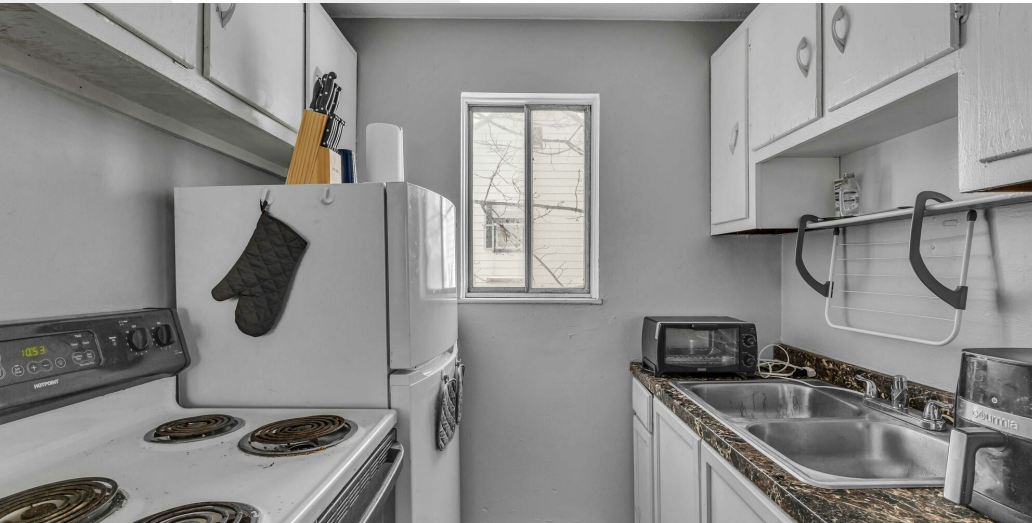
kas.filippova@expcommercial.com



eXp Commercial, LLC, its direct and indirect parents and their subsidiaries (together, "We") obtained the information above from sources believed to be reliable, however, We have not verified its accuracy and make no guarantee, warranty or representation, expressed or implied, about such information. The information contained above is submitted subject to the possibility of errors, omissions, price changes, rental or other conditions, prior sale, lease or financing, or withdrawal without notice. Any projections, opinions, assumptions or estimates of the information contained above or provided in connection therewith, either expressed or implied, are for example only, and they may not represent current or future performance of the subject property. You, together with your tax and legal advisors, should conduct your own thorough investigation of the subject property and potential investment.

Complete Highlights

FOR SALE



- 6-unit multifamily asset with a strong unit mix: 3 one-bedroom / 3 two-bedroom
- NOI: approximately \$43,068 annually
- Offered at \$525,000, delivering a cap rate of approximately 8.2%
- Value-add opportunity with immediate upside through leasing the vacant unit and optimizing rents, enhancing cash flow and overall return
- Tenants pay gas and electric; owner covers water/sewer, common electric, insurance, taxes, and maintenance
- Recent capital improvements enhance long-term performance and reduce future CapEx: New sealed roof with built-in drains (2024), New hot water heater, Foundation moisture barrier installed at rear of building (\$10,000), Updated flooring, paint, and select appliances
- On-site parking lot
- Well-maintained, income-producing property with immediate cash flow and value-add potential through lease-up of vacant unit and rent optimization

Kas Filippova

216.374.3689

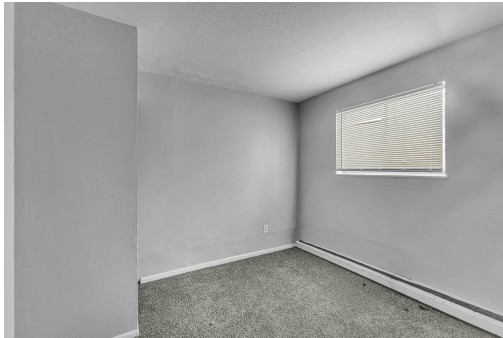
kas.filippova@expcommercial.com



eXp Commercial, LLC, its direct and indirect parents and their subsidiaries (together, "We") obtained the information above from sources believed to be reliable, however, We have not verified its accuracy and make no guarantee, warranty or representation, expressed or implied, about such information. The information contained above is submitted subject to the possibility of errors, omissions, price changes, rental or other conditions, prior sale, lease or financing, or withdrawal without notice. Any projections, opinions, assumptions or estimates of the information contained above or provided in connection therewith, either expressed or implied, are for example only, and they may not represent current or future performance of the subject property. You, together with your tax and legal advisors, should conduct your own thorough investigation of the subject property and potential investment.

Additional Photos

FOR SALE



Kas Filippova

216.374.3689

kas.filippova@expcommercial.com



eXp Commercial, LLC, its direct and indirect parents and their subsidiaries (together, "We") obtained the information above from sources believed to be reliable, however, We have not verified its accuracy and make no guarantee, warranty or representation, expressed or implied, about such information. The information contained above is submitted subject to the possibility of errors, omissions, price changes, rental or other conditions, prior sale, lease or financing, or withdrawal without notice. Any projections, opinions, assumptions or estimates of the information contained above or provided in connection therewith, either expressed or implied, are for example only, and they may not represent current or future performance of the subject property. You, together with your tax and legal advisors, should conduct your own thorough investigation of the subject property and potential investment.

Location Map

FOR SALE



Kas Filippova

216.374.3689

kas.filippova@expcommercial.com



eXp Commercial, LLC, its direct and indirect parents and their subsidiaries (together, "We") obtained the information above from sources believed to be reliable, however, We have not verified its accuracy and make no guarantee, warranty or representation, expressed or implied, about such information. The information contained above is submitted subject to the possibility of errors, omissions, price changes, rental or other conditions, prior sale, lease or financing, or withdrawal without notice. Any projections, opinions, assumptions or estimates of the information contained above or provided in connection therewith, either expressed or implied, are for example only, and they may not represent current or future performance of the subject property. You, together with your tax and legal advisors, should conduct your own thorough investigation of the subject property and potential investment.

Income & Expenses

FOR SALE

EXPENSES SUMMARY

Water/sewer	\$300
Electric - Hallways	\$90
Gas	\$300
Insurance	\$265
Maintenance	\$150
Taxes	\$300
OPERATING EXPENSES	\$1,405

NET OPERATING INCOME	\$43,068
-----------------------------	-----------------

Kas Filippova

216.374.3689

kas.filippova@expcommercial.com



eXp Commercial, LLC, its direct and indirect parents and their subsidiaries (together, "We") obtained the information above from sources believed to be reliable, however, We have not verified its accuracy and make no guarantee, warranty or representation, expressed or implied, about such information. The information contained above is submitted subject to the possibility of errors, omissions, price changes, rental or other conditions, prior sale, lease or financing, or withdrawal without notice. Any projections, opinions, assumptions or estimates of the information contained above or provided in connection therewith, either expressed or implied, are for example only, and they may not represent current or future performance of the subject property. You, together with your tax and legal advisors, should conduct your own thorough investigation of the subject property and potential investment.

Rent Roll

FOR SALE

SUITE	BEDROOMS	BATHROOMS	RENT	MARKET RENT	MARKET RENT / SF	LEASE START	LEASE END
1	1	1	\$1,163	-	-	08/2026	09/2026
2	2	1	\$1,170	-	-	01/2026	01/2027
3	1	1	\$890	-	-	08/2026	08/2027
4	2	1	\$1,171	-	-	08/2026	08/2027
5	2	1	-	\$1,170	-	will be rented	-
6	1	1	\$600	-	-	month-to-month	-
TOTALS			\$4,994	\$1,170	\$0.00		

Kas Filippova

216.374.3689

kas.filippova@expcommercial.com



eXp Commercial, LLC, its direct and indirect parents and their subsidiaries (together, "We") obtained the information above from sources believed to be reliable, however, We have not verified its accuracy and make no guarantee, warranty or representation, expressed or implied, about such information. The information contained above is submitted subject to the possibility of errors, omissions, price changes, rental or other conditions, prior sale, lease or financing, or withdrawal without notice. Any projections, opinions, assumptions or estimates of the information contained above or provided in connection therewith, either expressed or implied, are for example only, and they may not represent current or future performance of the subject property. You, together with your tax and legal advisors, should conduct your own thorough investigation of the subject property and potential investment.

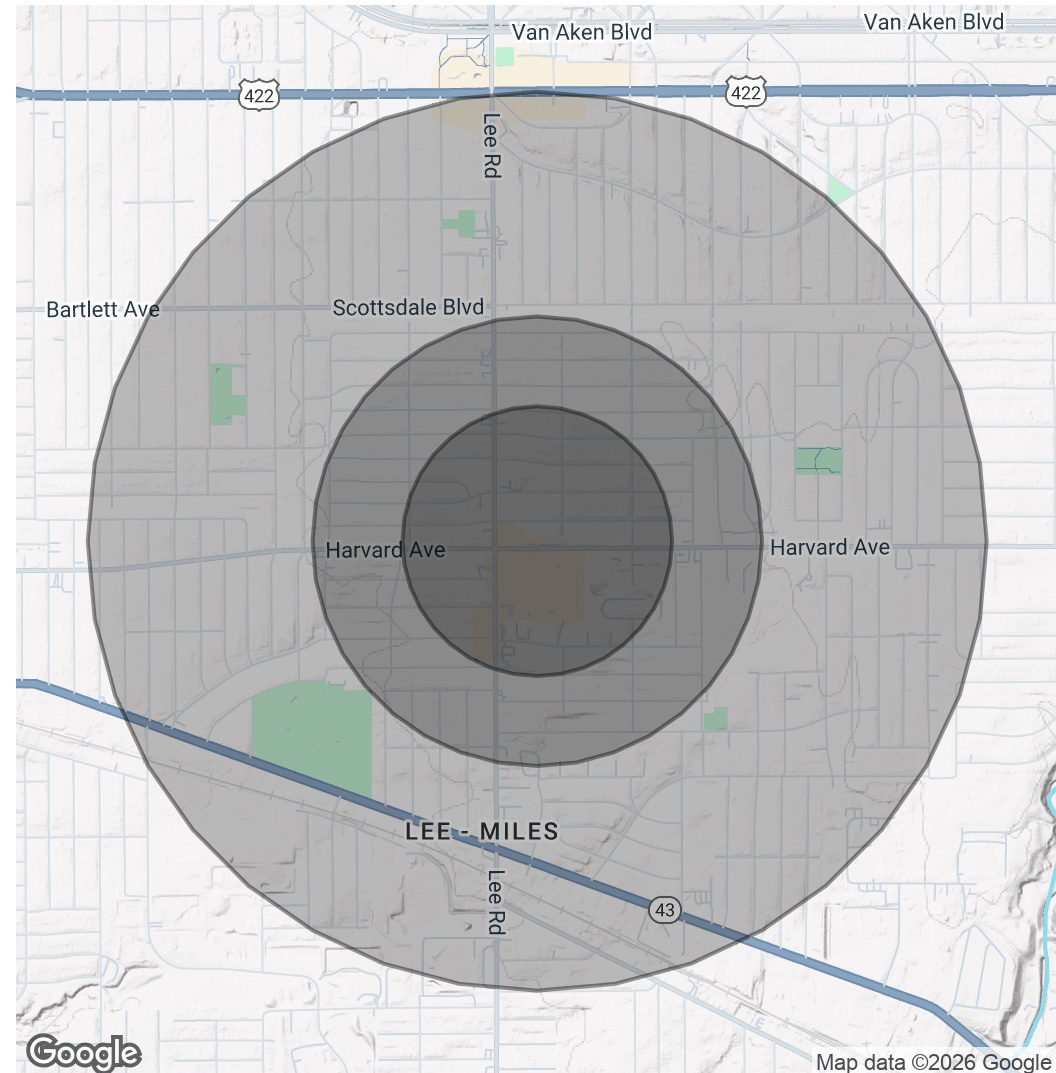
Demographics Map & Report

FOR SALE

POPULATION	0.3 MILES	0.5 MILES	1 MILE
Total Population	1,122	4,566	19,002
Average Age	45	45	43
Average Age (Male)	42	42	40
Average Age (Female)	48	48	46

HOUSEHOLDS & INCOME	0.3 MILES	0.5 MILES	1 MILE
Total Households	500	2,038	8,305
# of Persons per HH	2.2	2.2	2.3
Average HH Income	\$63,811	\$62,167	\$61,643
Average House Value	\$88,076	\$91,514	\$128,785

Demographics data derived from AlphaMap



Kas Filippova

216.374.3689

kas.filippova@expcommercial.com



eXp Commercial, LLC, its direct and indirect parents and their subsidiaries (together, "We") obtained the information above from sources believed to be reliable, however, We have not verified its accuracy and make no guarantee, warranty or representation, expressed or implied, about such information. The information contained above is submitted subject to the possibility of errors, omissions, price changes, rental or other conditions, prior sale, lease or financing, or withdrawal without notice. Any projections, opinions, assumptions or estimates of the information contained above or provided in connection therewith, either expressed or implied, are for example only, and they may not represent current or future performance of the subject property. You, together with your tax and legal advisors, should conduct your own thorough investigation of the subject property and potential investment.