



Building with Parking in Downtown San Carlos For Sale

**612 EL CAMINO REAL
SAN CARLOS, CA**

Area

±3,042 sf Building

±2,224 sf on ground floor

±818 sf on 2nd floor

±7,535 sf lot size

~12 parking spaces on-site

Sales Price

Asking: ~~\$2,895,000~~ \$2,795,000

Property Highlights

Perfect for investor, developer or operator/user

Complete building rehab in 2008

Leased for ~3 years to the Rail Sports Bar & Lounge
(call for details)

Directly across the street from San Carlos Caltrain
station

[Zoning: MU-DC zoning designation](#)
(e.g. residential, office)

Zoning provides future upside development potential

For information, please contact:

Mark Lockenmeyer

Managing Director

t 650-358-5257

mark.lockenmeyer@nmrk.com

CA RE License #00995166

Roger Oser

Senior Managing Director

t 650-358-5262

roger.oser@nmrk.com

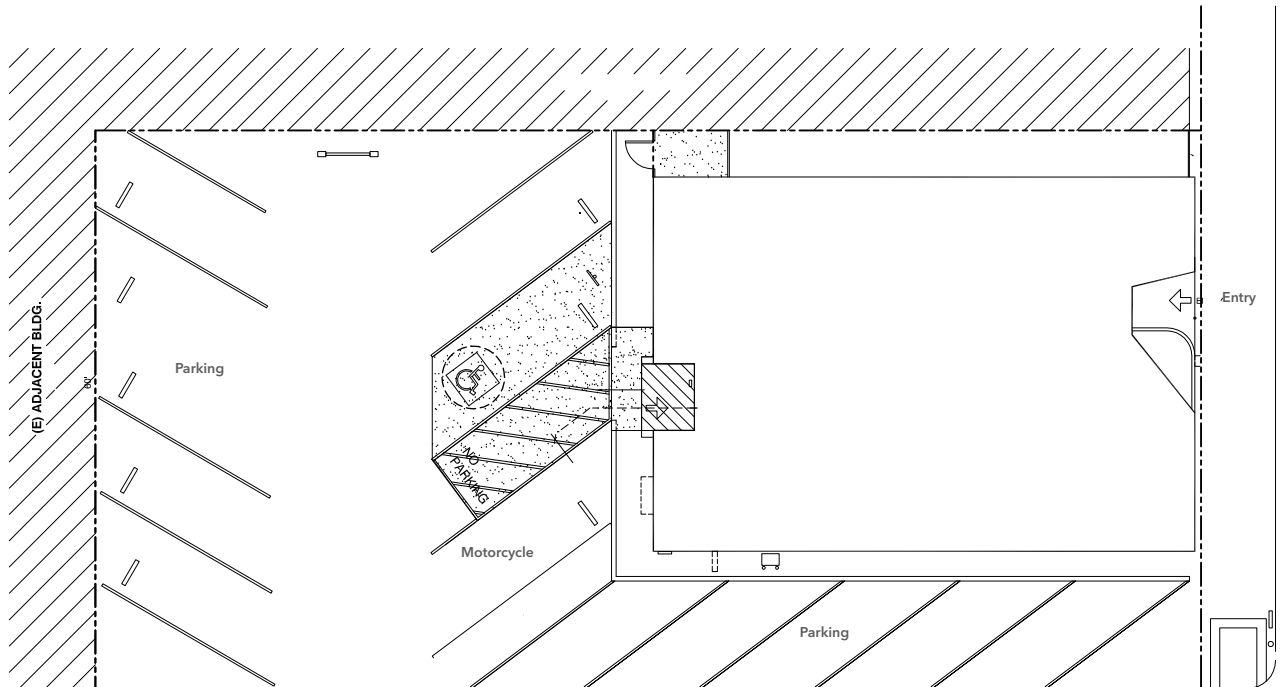
CA RE License #00826289

nmrk.com

NEWMARK

The distributor of this communication is performing acts for which a real estate license is required. The information contained herein has been obtained from sources deemed reliable but has not been verified and no guarantee, warranty or representation, either express or implied, is made with respect to such information. Terms of sale or lease and availability are subject to change or withdrawal without notice.

Existing Site plan



For information, please contact:

Mark Lockenmeyer

Managing Director

t 650-358-5257

mark.lockenmeyer@nmrk.com

CA RE License #00995166

Roger Oser

Senior Managing Director

t 650-358-5262

roger.oser@nmrk.com

CA RE License #00826289

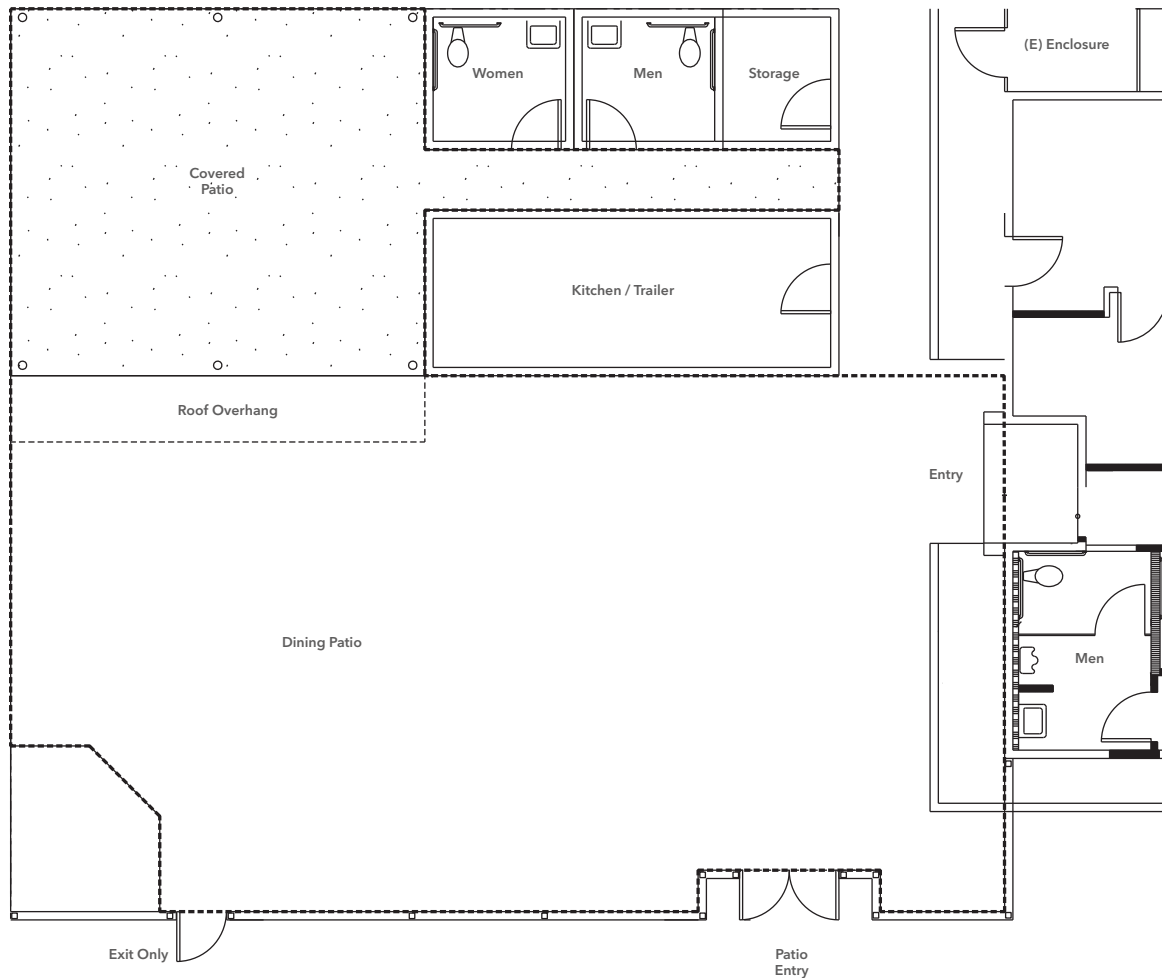
nmrk.com

NEWMARK

The distributor of this communication is performing acts for which a real estate license is required. The information contained herein has been obtained from sources deemed reliable but has not been verified and no guarantee, warranty or representation, either express or implied, is made with respect to such information. Terms of sale or lease and availability are subject to change or withdrawal without notice.

Patio: Conceptual Drawing

Existing parking area- Requires City of San Carlos review and approval



For information, please contact:

Mark Lockenmeyer

Managing Director

t 650-358-5257

mark.lockenmeyer@nmrk.com

CA RE License #00995166

Roger Oser

Senior Managing Director

t 650-358-5262

roger.oser@nmrk.com

CA RE License #00826289

nmrk.com

NEWMARK

The distributor of this communication is performing acts for which a real estate license is required. The information contained herein has been obtained from sources deemed reliable but has not been verified and no guarantee, warranty or representation, either express or implied, is made with respect to such information. Terms of sale or lease and availability are subject to change or withdrawal without notice.



For information, please contact:

Mark Lockenmeyer

Managing Director

t 650-358-5257

mark.lockenmeyer@nmrk.com

CA RE License #00995166

Roger Oser

Senior Managing Director

t 650-358-5262

roger.oser@nmrk.com

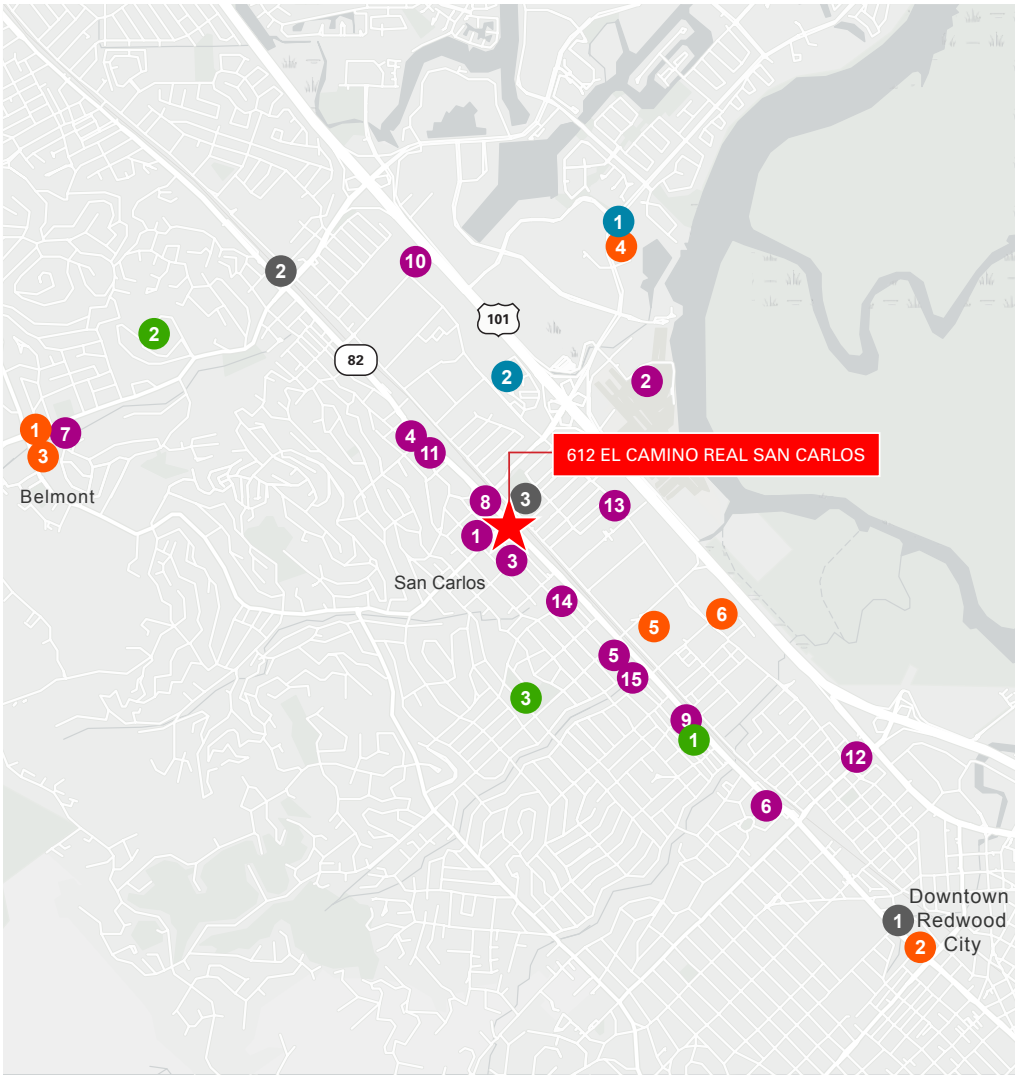
CA RE License #00826289

nmrk.com

NEWMARK

The distributor of this communication is performing acts for which a real estate license is required. The information contained herein has been obtained from sources deemed reliable but has not been verified and no guarantee, warranty or representation, either express or implied, is made with respect to such information. Terms of sale or lease and availability are subject to change or withdrawal without notice.

Amenity Map



| | |
|---|-----------------------------------|
|  | Restaurants |
| 1 | Drakes |
| 2 | Sky Kitchen |
| 3 | number5kitchen |
| 4 | The Omelette House |
| 5 | My Breakfast House |
| 6 | STACKS Redwood City |
| 7 | Cafe Bliss |
| 8 | El Charrito |
| 9 | Mints & Honey |
| 10 | El Metate Taqueria |
| 11 | McDonalds |
| 12 | Chick-fil-A |
| 13 | Marsha's Lunchbox |
| 14 | Broiler Express |
| 15 | Dumpling & Dough |
|  | Malls |
| 1 | Belmont Village |
| 2 | Sequoia Station |
| 3 | Carlmont Village Shopping Center |
| 4 | The Marketplace at Redwood Shores |
| 5 | Brittan Station Shopping Center |
| 6 | San Carlos Marketplace |
|  | Hospitals |
| 1 | UCSF Benioff Children's Hospitals |
| 2 | Sutter Urgent Care |
|  | Educational Institutions |
| 1 | Shu Academy Preschool |
| 2 | Notre Dame de Namur University |
| 3 | Arbor Bay School |
|  | Transit Points |
| 1 | Redwood City Transit Center |
| 2 | Belmont Caltrain |
| 3 | San Carlos Train Station |

For information, please contact:

Mark Lockenmeyer

Managing Director

t 650-358-5257

mark.lockenmeyer@nmrk.com

CA RE License #00995166

Roger Oser

Senior Managing Director

t 650-358-5262

roger.oser@nmrk.com

CA RE License #00826289

nmrk.com

NEWMARK

The distributor of this communication is performing acts for which a real estate license is required. The information contained herein has been obtained from sources deemed reliable but has not been verified and no guarantee, warranty or representation, either express or implied, is made with respect to such information. Terms of sale or lease and availability are subject to change or withdrawal without notice. 22-0699