

37,031 SF

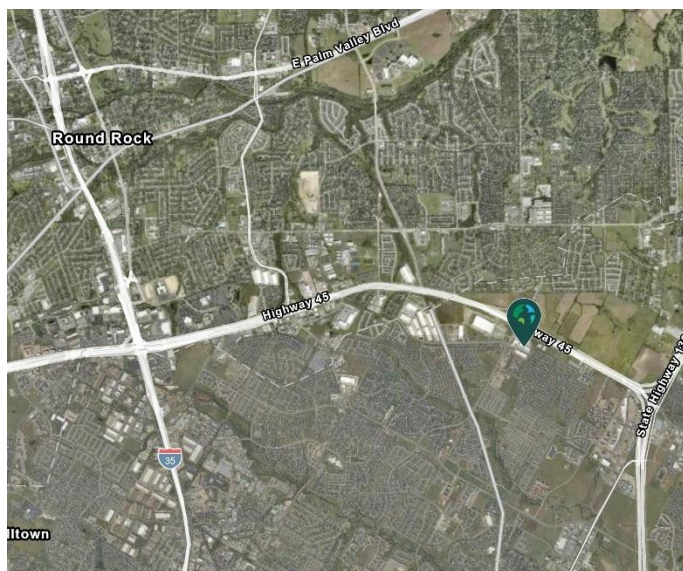
Industrial Space For Lease



Prologis Heatherwilde 45 Building 3



18919 Heatherwilde Blvd, Suite 100
Pflugerville, TX 78660 USA



LOCATION

- Located off the frontage road of SH 45 and Heatherwilde Blvd.
- Convenient to major employers: UPS, Living Spaces and BAE Systems
- Approximately 20 miles to Central Business District

FACILITY

- 37,031 sf available
- 4,073 sf office
- 28' clear height
- 60' x 52' column spacing
- 8 dock high doors
- 1 drive-in door
- ESFR sprinkler system

ADVANTAGES AND AMENITIES

- End cap space
- Rear load configuration
- Access to the [Prologis Essentials](#) platform, which includes:
 - [Operations Essentials](#)
 - [Energy + Sustainability Essentials](#)
 - [Mobility Essentials](#)
 - [Workforce Essentials](#)

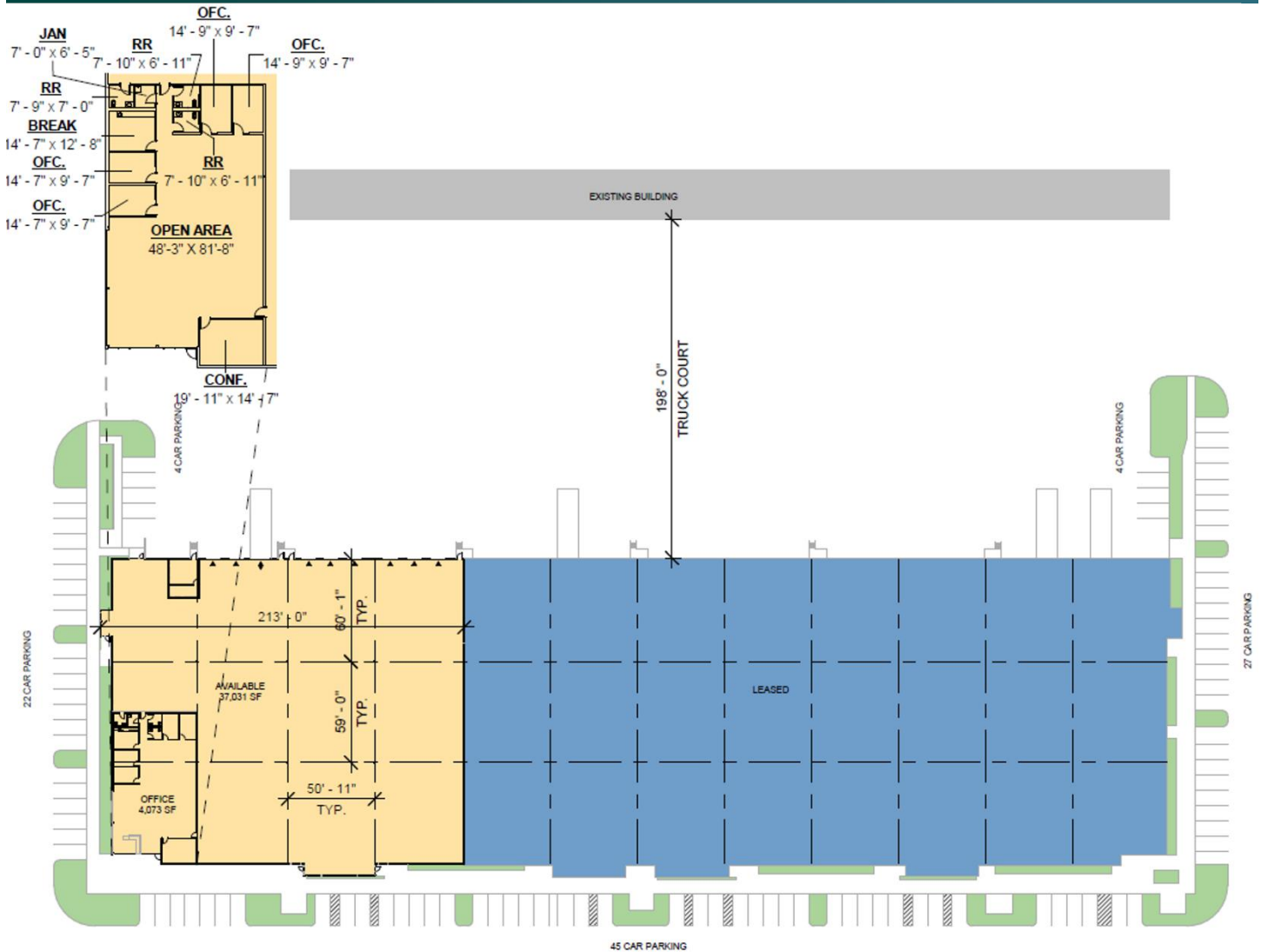
Your single-source service for efficient move-in

37,031 SF

Industrial Space For Lease



Prologis Heatherwilde 45 Building 3



Live Oak

Scott Flack
scott@liveoak.com
ph +1 512 472 5000
cell +1 512 695 4803
2725 Bee Cave Road
Austin, TX 78746 USA

Live Oak

Doug Thomas
doug@liveoak.com
ph +1 512 472 5000
cell +1 512 695 3985
2725 Bee Cave Road
Austin, TX 78746 USA

Live Oak

Ryan Whalen
rwhalen@liveoak.com
ph +1 512 472 5000
cell +1 512 803 9928
2725 Bee Cave Road
Austin, TX 78746 USA

Prologis

Whitney Williamson
wwilliamson@prologis.com
ph +1 972 884 9244
cell +1 817 781 5186
600 Congress Avenue, 16th Floor
Austin, TX 78701 USA