

FOR LEASE

BAR/RESTAURANT & RETAIL

1208 E SHERMAN AVE - COEUR D' ALENE



PROPERTY HIGHLIGHTS

- Building Size: \pm 2,668 SF
- Lot Size: \pm 5,532
- Built-In Bar with Tap Lines & Cooler
- Walk-In Cooler & Area for Kitchen (No Kitchen Equip Installed)
- Estimated NNN - \$.38/SF (Insured as Bar)

LEASE RATE: \$2.00/SF NNN



DONNIE MURRELL
208-758-7539
donnie@7foldrealty.com

**BERKSHIRE
HATHAWAY** | JACKLIN
REAL ESTATE

This information has been secured from sources believed to be reliable, but no representations or warranties are made, expressed or implied, as to the accuracy of the information. References to square footage are approximate. Buyer and tenant must verify the information and bears all risk for any inaccuracies. All quoted prices are subject to change without notice.

PROPERTY

1208 E SHERMAN AVE - COEUR D' ALENE



DONNIE MURRELL
208-758-7539
donnie@7foldrealty.com

BERKSHIRE | JACKLIN
HATHAWAY | REAL ESTATE

This information has been secured from sources believed to be reliable, but no representations or warranties are made, expressed or implied, as to the accuracy of the information. References to square footage are approximate. Buyer and tenant must verify the information and bears all risk for any inaccuracies. All quoted prices are subject to change without notice.

PROPERTY

1208 E SHERMAN AVE - COEUR D' ALENE



This floor plan is provided for informational purposes only and is not to scale. All measurements, dimensions, and specifications are approximate and may vary. The information is believed to be accurate but is not guaranteed. Prospective buyers or tenants are encouraged to independently verify all details before making decisions based on this information. The seller, broker, and agent assume no responsibility for discrepancies or inaccuracies.



DONNIE MURRELL
208-758-7539
donnie@7foldrealty.com

BERKSHIRE | JACKLIN
HATHAWAY | REAL ESTATE

This information has been secured from sources believed to be reliable, but no representations or warranties are made, expressed or implied, as to the accuracy of the information. References to square footage are approximate. Buyer and tenant must verify the information and bears all risk for any inaccuracies. All quoted prices are subject to change without notice.

PROPERTY

1208 E SHERMAN AVE - COEUR D' ALENE



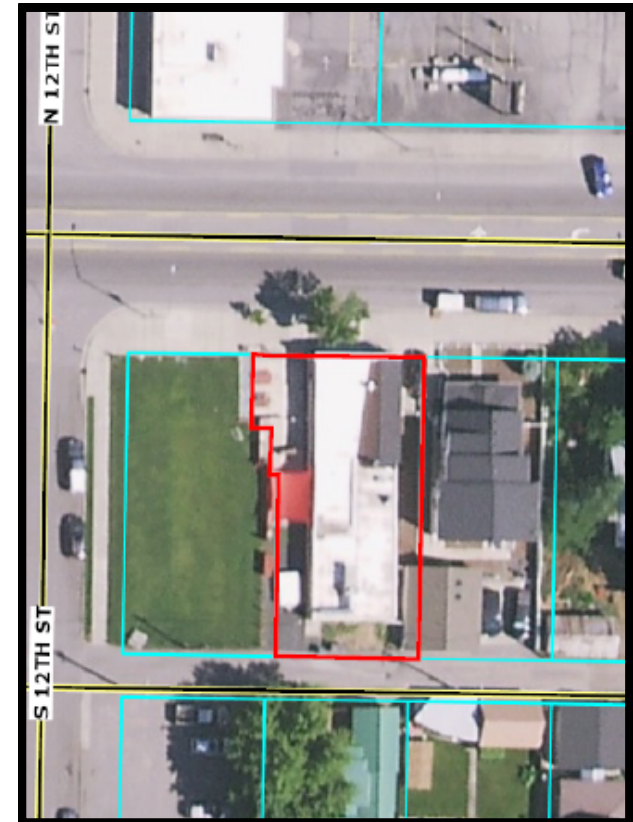
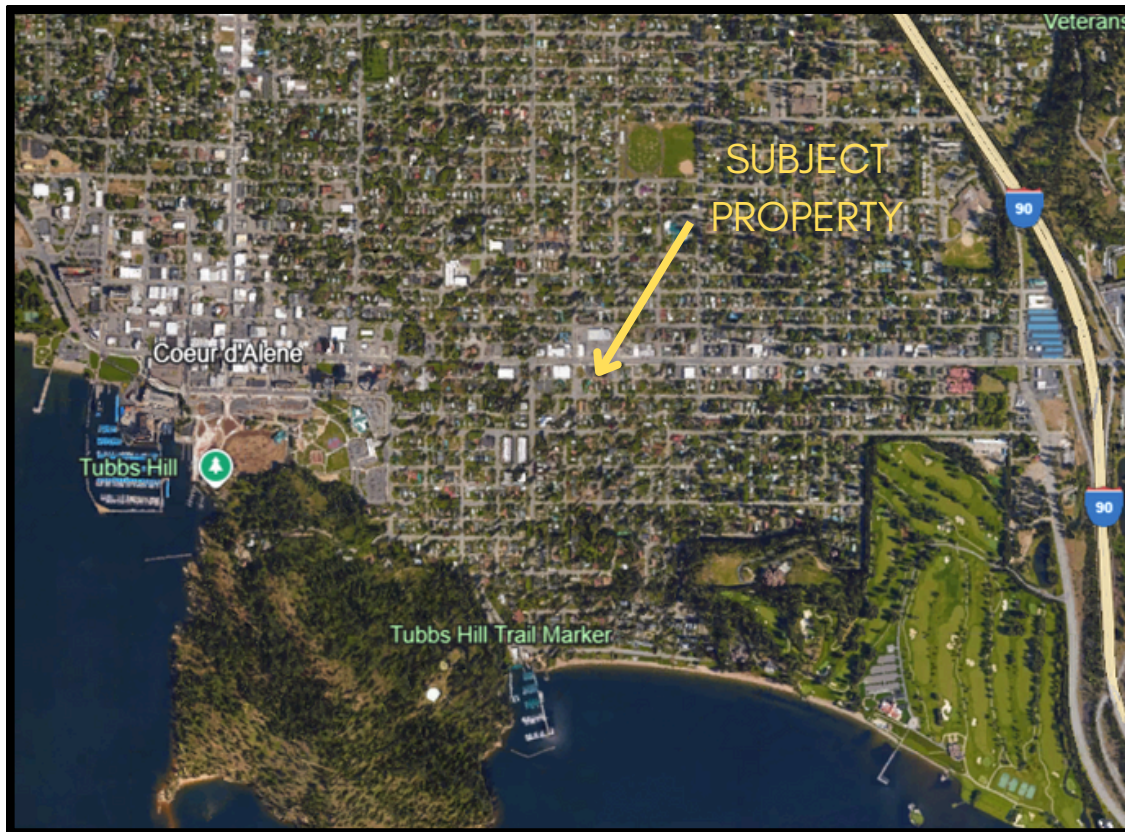
DONNIE MURRELL
208-758-7539
donnie@7foldrealty.com

BERKSHIRE | JACKLIN
HATHAWAY | REAL ESTATE

This information has been secured from sources believed to be reliable, but no representations or warranties are made, expressed or implied, as to the accuracy of the information. References to square footage are approximate. Buyer and tenant must verify the information and bears all risk for any inaccuracies. All quoted prices are subject to change without notice.

PROPERTY

1208 E SHERMAN AVE - COEUR D' ALENE



Property includes concrete
patio on west side of building



DONNIE MURRELL
208-758-7539
donnie@7foldrealty.com

BERKSHIRE | JACKLIN
HATHAWAY | REAL ESTATE

This information has been secured from sources believed to be reliable, but no representations or warranties are made, expressed or implied, as to the accuracy of the information. References to square footage are approximate. Buyer and tenant must verify the information and bears all risk for any inaccuracies. All quoted prices are subject to change without notice.