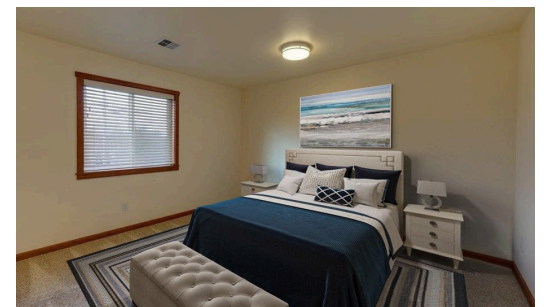


UNIQUE OPPORTUNITY *in Central Seaside*



BEDS PER UNIT

2

BATHS PER UNIT

2 / 1

MLS NO. 395053455

\$2,899,000

Located conveniently between Roosevelt and Holladay with EZ access to shopping and beach via Ave G. This property is an 8 plex however an investor can take advantage of the condo conversion mentioned in the private remarks. Each unit boasts 2- en suite baths in both bedrooms featuring LVP flooring, stainless appliances, washer/dryer and quality finishes throughout. Virtually staged for coastal inspiration!



PAM ACKLEY
Principal Broker, ASP. CRS, GRI, SFR
PamAckley@windermere.com
503.717.3796