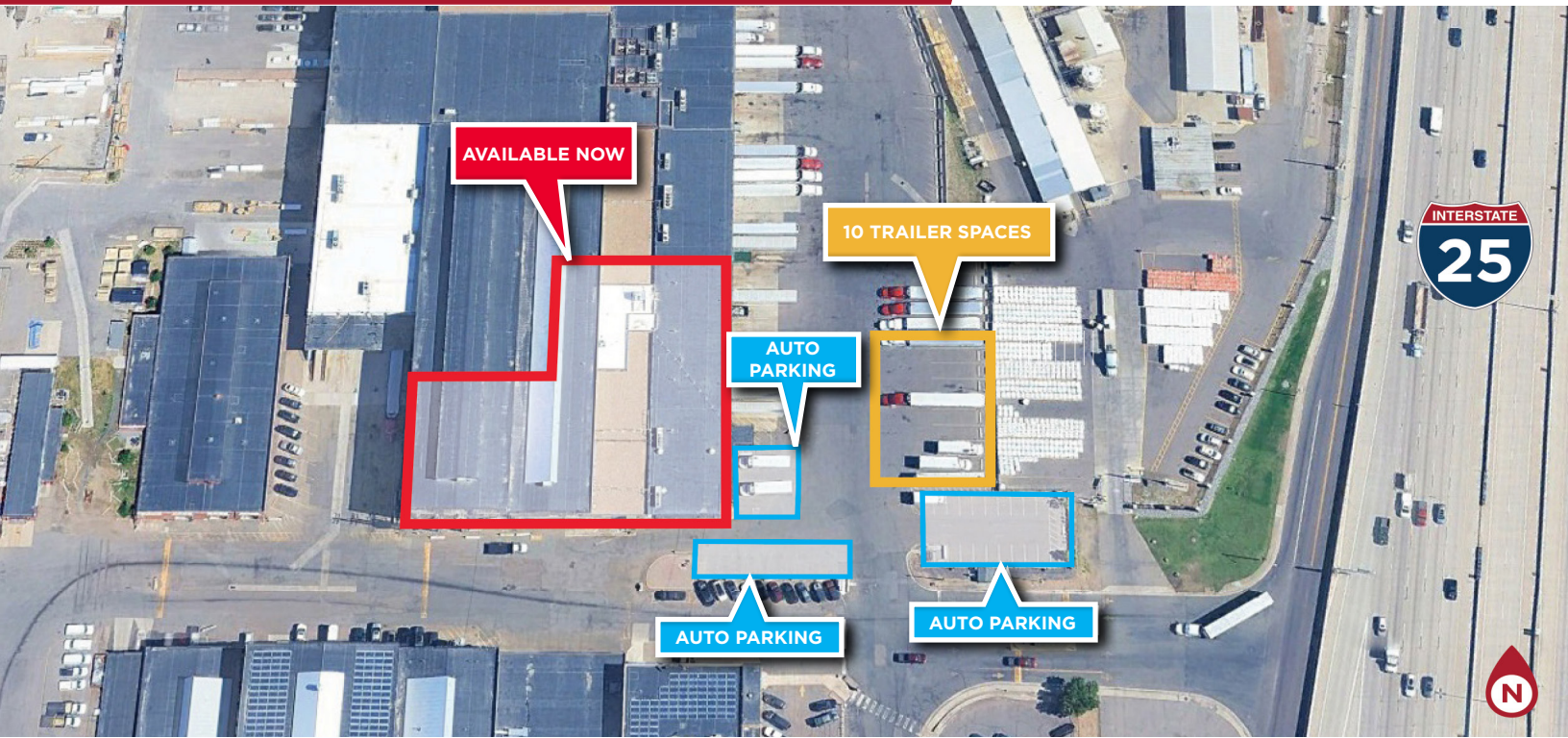


FOR LEASE THE DENVER SHOPS

5151 BANNOCK STREET, WAREHOUSE J
DENVER, COLORADO 80216



DISTRIBUTION WAREHOUSE SPACE | 36,295 SF AVAILABLE FOR IMMEDIATE OCCUPANCY

PROPERTY HIGHLIGHTS



SPACE AVAILABLE
36,295 SF



LEASE RATE
\$5.95/SF NNN



OPEX
\$4.56/SF



LOADING
11 DOCK HIGH DOORS WITH LEVELERS



PARKING
38 CAR PARKS
10 TRUCK/TRAILER PARKS



POWER
800 AMP 480 VOLT 3 PHASE
(more power can be easily added)



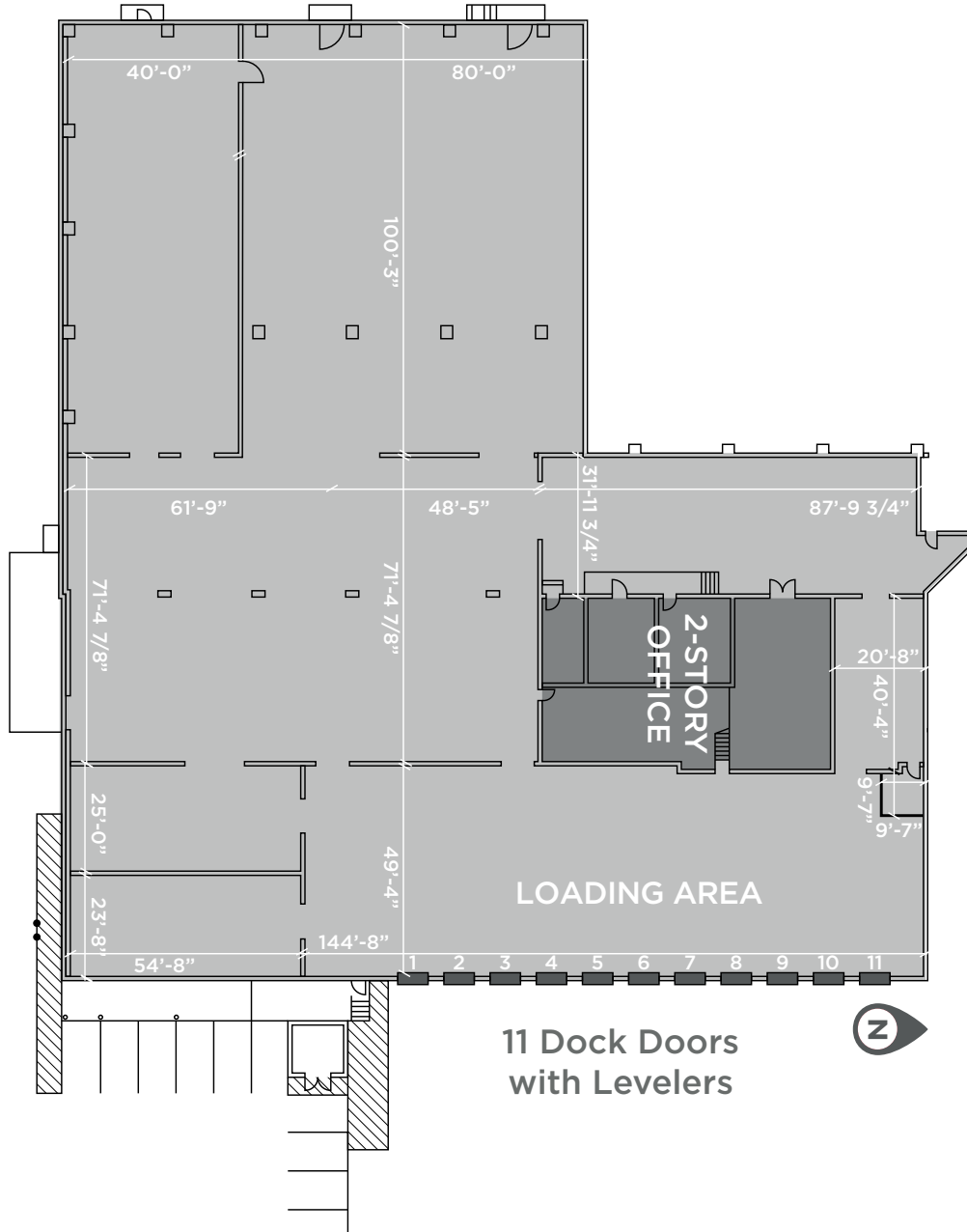
CLEAR HEIGHT
12'-16'

PROPERTY FEATURES

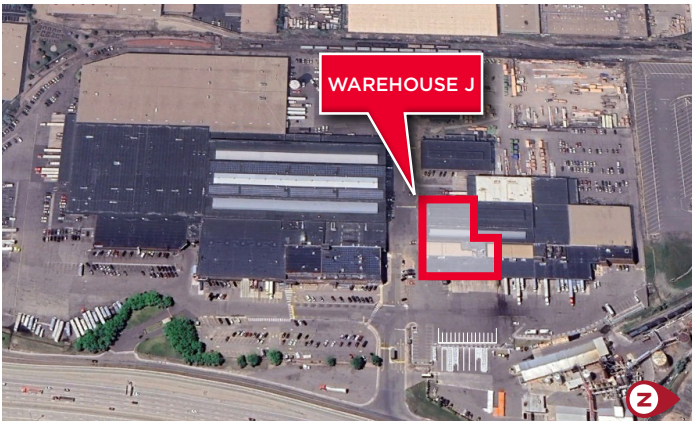
- Available for immediate occupancy
- 36,925 SF warehouse space
- Central location with easy access to I-25, I-70, & I-76
- Can access 2.5M people within a 30 minute drive
- Abundant surface parking for employees & clients
- Trailer parking available

SITE & FLOOR PLAN

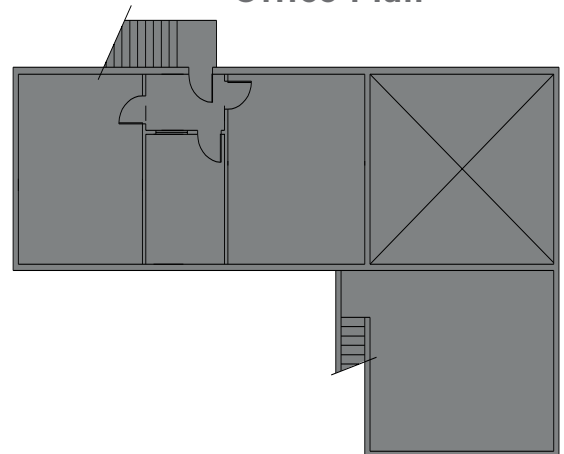
WAREHOUSE J



11 Dock Doors
with Levelers



Second Story
Office Plan



AERIAL MAP



TYLER SMITH, SIOR, CCIM
Executive Director
+1 303 312 4296
t.smith@cushwake.com

AARON VALDEZ, SIOR
Executive Director
+1 303 819 7333
aaron.valdez@cushwake.com

ALEC RHODES, SIOR
Executive Director
+1 303 312 4282
alec.rhodes@cushwake.com