



Santa Monica Bungalows Full Building Creative Office/Flex Bungalows

2932-2950 Nebraska Ave, Santa Monica, CA 90404



**2932 - 2950 NEBRASKA AVENUE
SANTA MONICA, CA 90404**

PREMISES

**2932 Nebraska: ± 4,000 SF
2950 Nebraska: ± 3,808 SF**

RENT

\$2.75/SFNNN (NNN's are approximately \$0.70/SF)

TERM

3 Years

PARKING

**8 Spaces Per Building
\$150/Space/Month**

FEATURES

- Exposed Bow Truss Ceiling
- Polished Concrete Floors
- Skylights Throughout with Abundant Natural Light
- Full Kitchen
- Outdoor Patio and Roll-up Door (2932 Nebraska)
- Close proximity to Hulu, HBO, Amazon and Universal Music
- Easy access to the Santa Monica Freeway (10) and Pacific Coast Highway (1)
- Flexible Lease Terms
- Convenient ground-floor loading access
- HVAC individual suite package units with individual controls
- Private en suite bathrooms

CONTACT

James Wilson
310.899.2708
jwilson@leewestla.com
AGT DRE 00883324

David Wilson
310.899.2707
dwilson@leewestla.com
AGT DRE 00822760

Dylan Mahood, CCIM
310.899.2706
dmahood@leewestla.com
AGT DRE 02027002



A DIVISION OF



1508 17th Street, Santa Monica, CA | 310.899.2700
WWW.LEEWESTLA.COM | DRE 01222000

No warranty or representation is made to the accuracy of the foregoing information.
Terms of sale or lease are subject to change or withdrawal without notice.

SUITE 2932



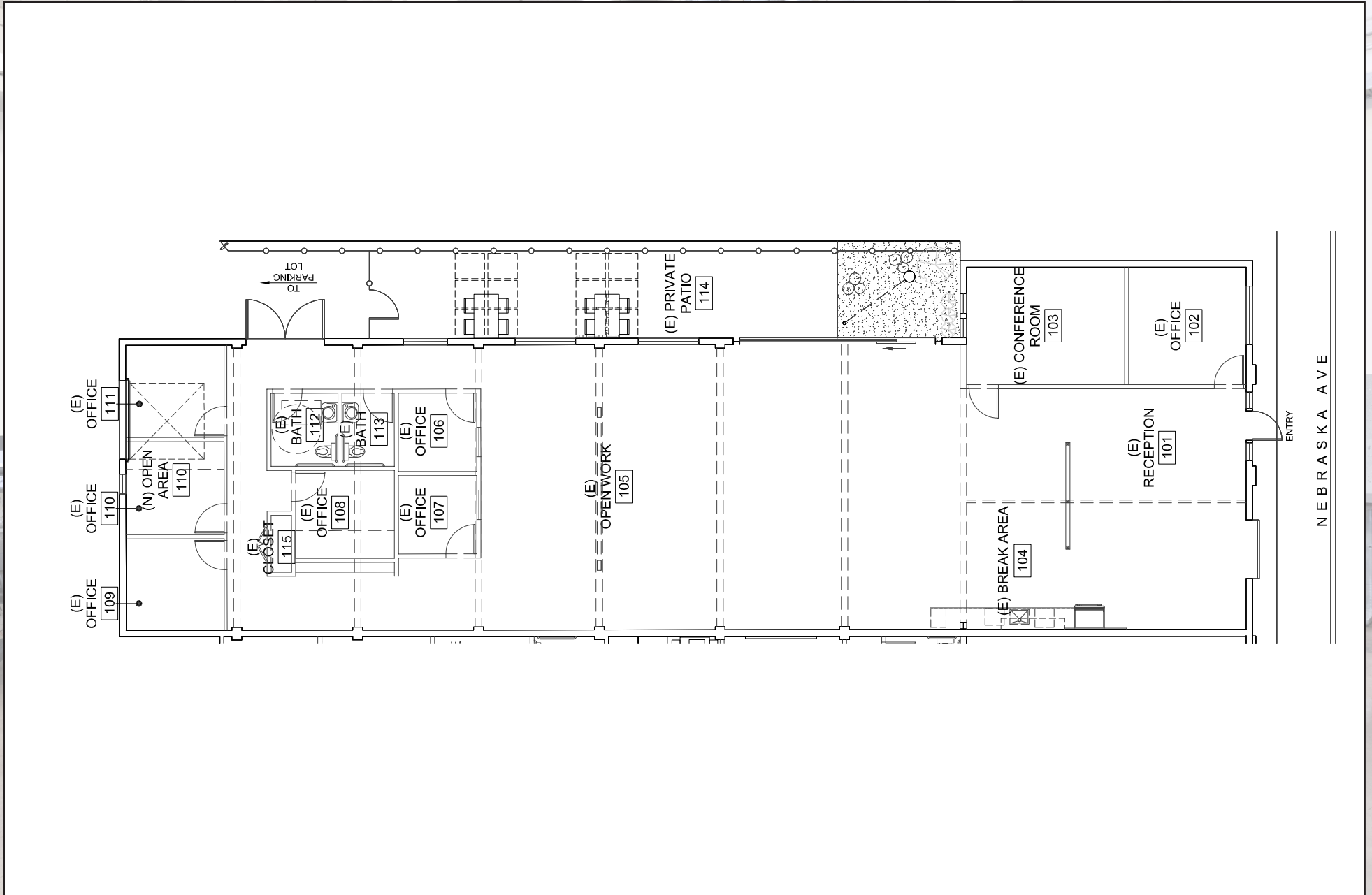
SUITE 2932



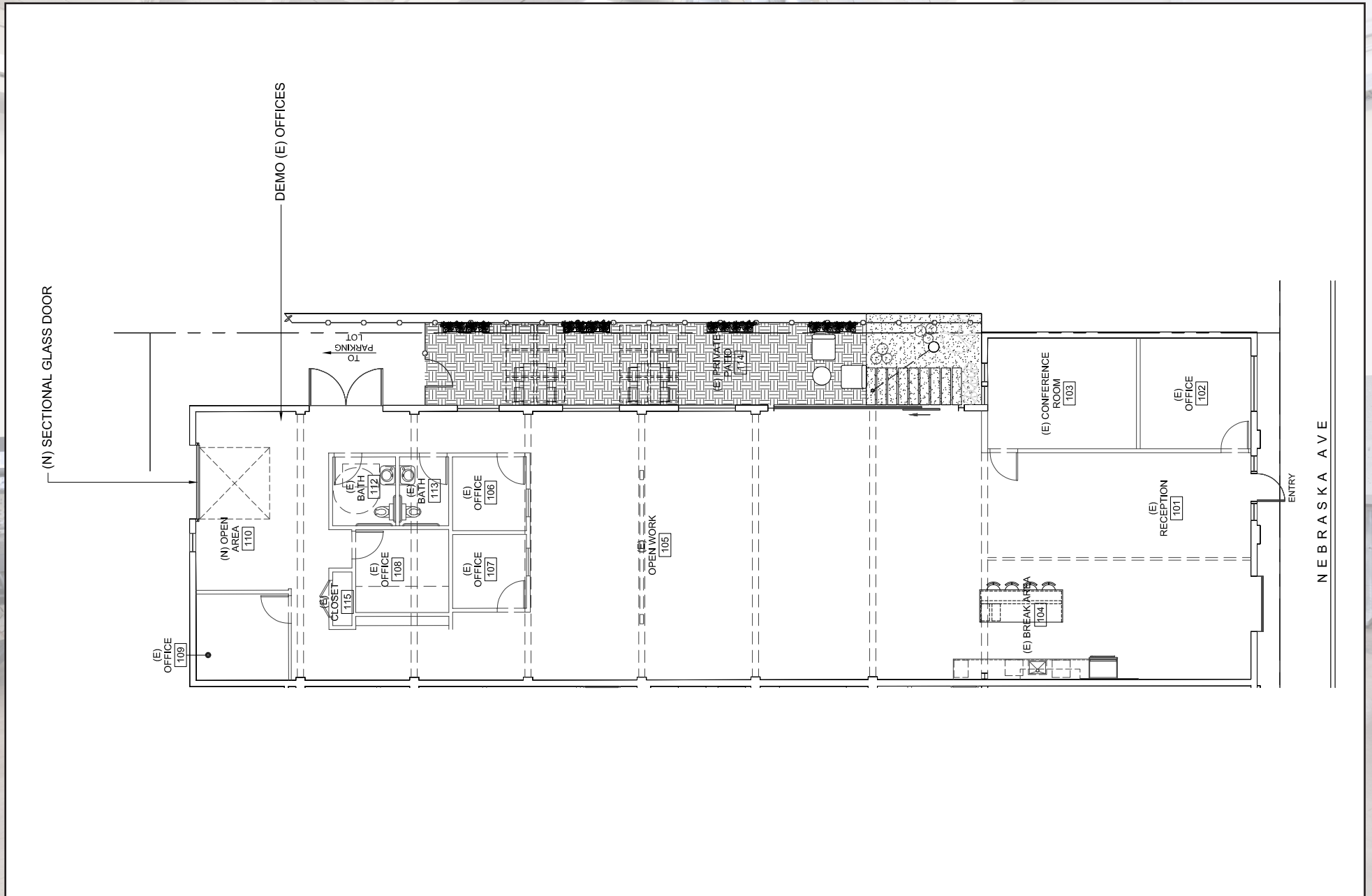
SUITE 2950



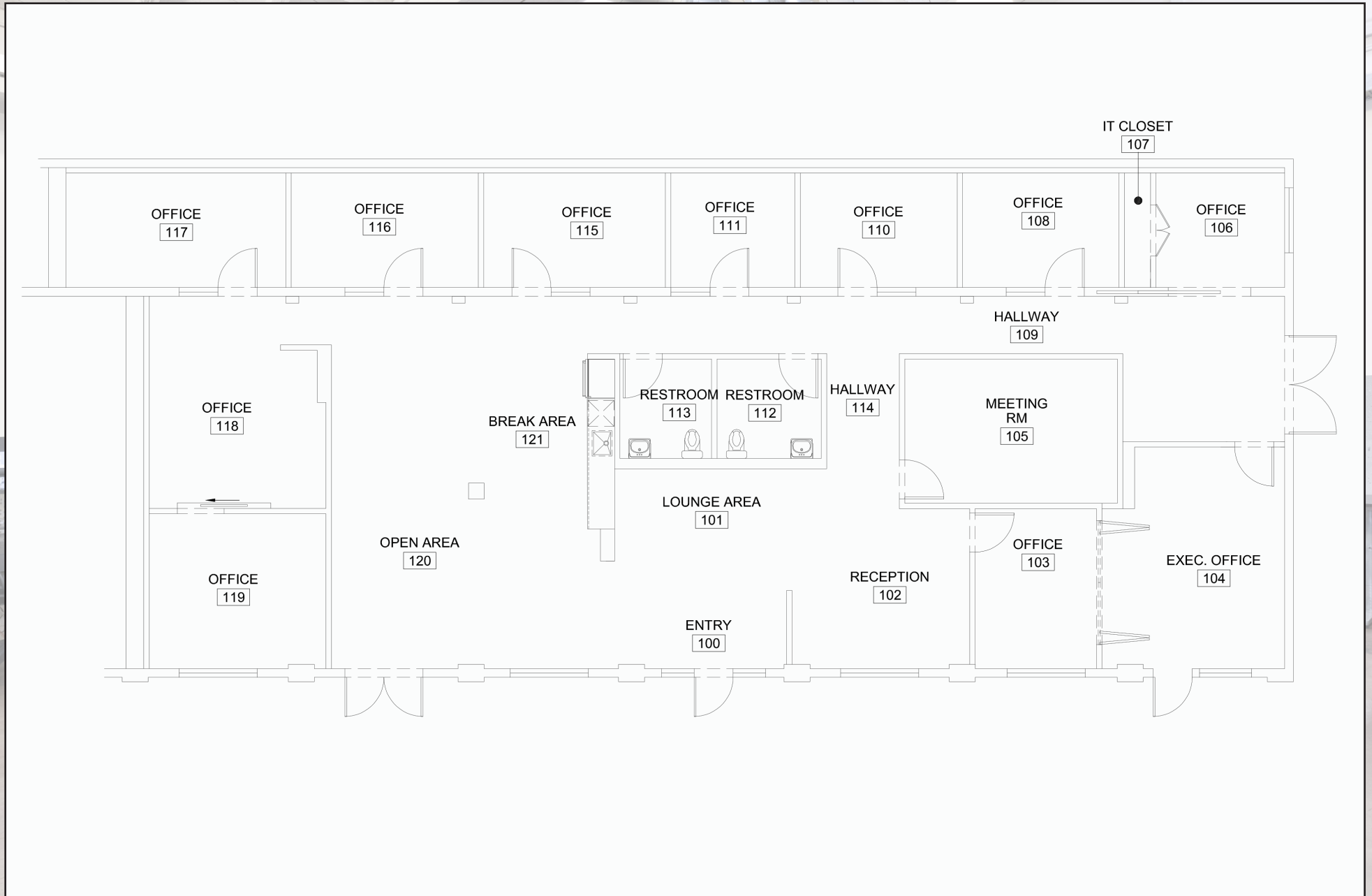
EXISTING FLOOR PLAN - 2932 NEBRASKA



PROPOSED FLOOR PLAN - 2932 NEBRASKA



EXISTING FLOOR PLAN - 2950 NEBRASKA



NEARBY TENANTS

