

office space
for
LEASE

Only
one
suite left!

2,022 rsf Available

3rd floor - \$24/sf FS*
suite 365 2,022 rsf

- + Bulding: 85,053 SF
- + Stories: 3
- + Year Built: 1987
- + Parking: 4/ 1,000
- + Signage: Marquee



1650 Sand Lake Road
Orlando, Florida 32809

patrick goetz
vice president
(407) 734.7210
pat@BBDRE.com



Bishop Beale Duncan
COMMERCIAL REAL ESTATE



THE FLORIDA MALL®
A SIMON MALL

the property



sand lake rd

orange blossom trl



highlights

Located on the
hard corner of
Orange Blossom
Trail and Sand
Lake Rd

- Tenant-Only Parking Deck with Secure Access
- Central South Orlando Location:
 - 2 miles from Florida Highway 528
 - 2 Miles from the Florida Turnpike
 - 5 miles from Interstate 4
 - 7 miles from the Orlando International Airport



250 N. Orange Ave., Ste. 1500
Orlando, FL 32801
+ (407) 426.7702
www.BBDRE.com

This offer is subject to errors, omissions, prior sale or withdrawal without notice.



for more information, contact patrick goetz vice president (407) 734.7210 pat@BBDRE.com

building elevation

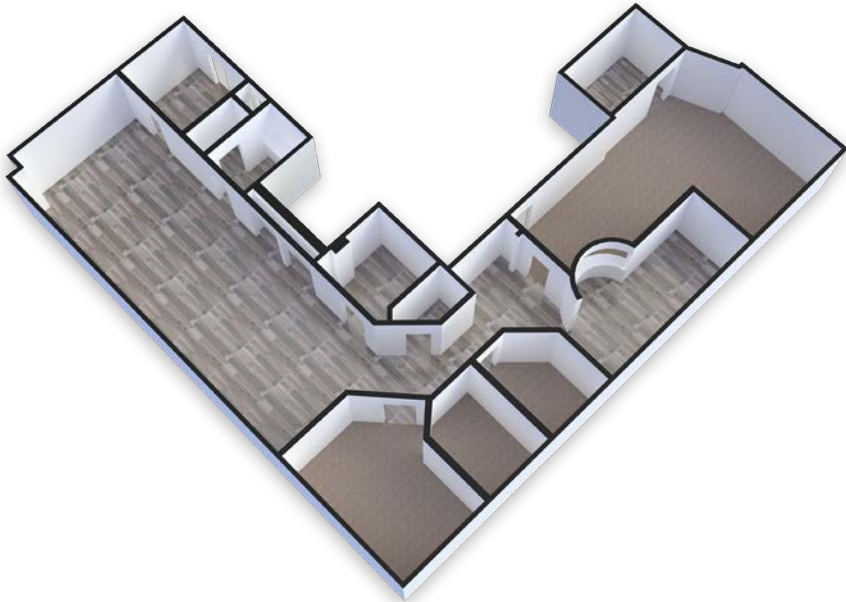


exterior



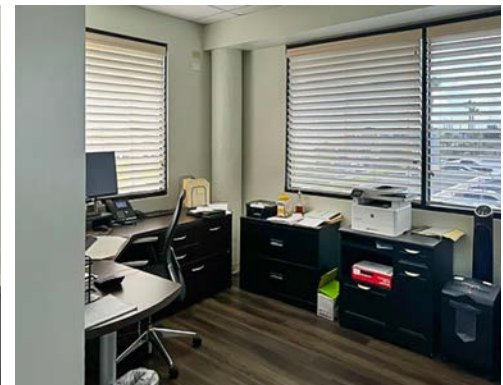
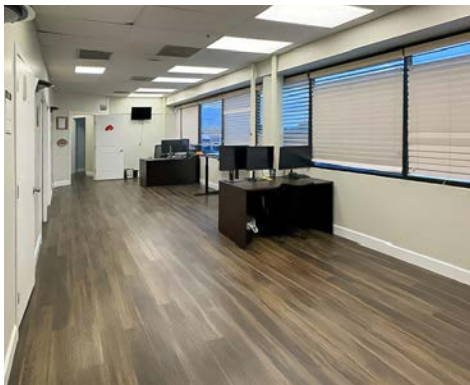
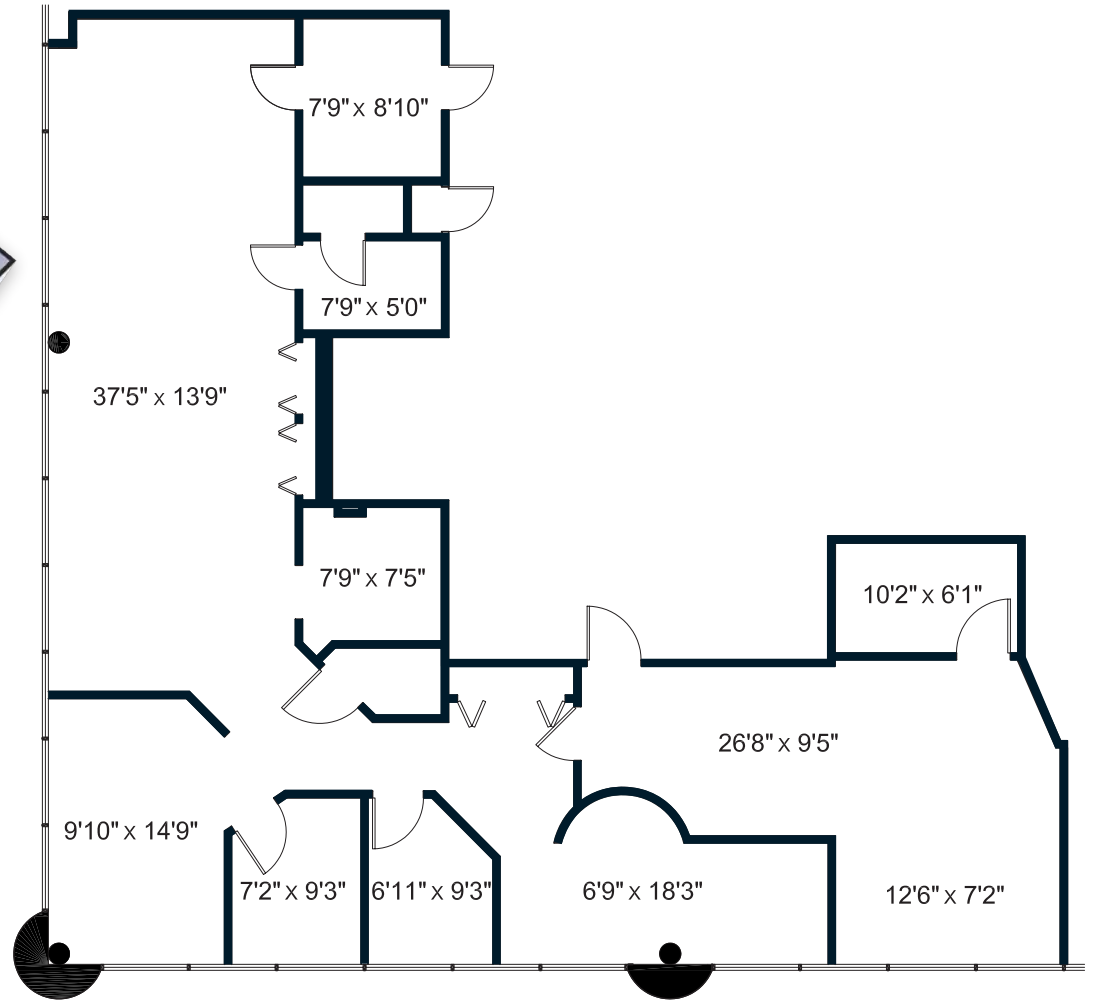
for more information, contact patrick goetz vice president (407) 734.7210 pat@BBDRE.com

Suite 365 | 2,022 rentable sf



space features:

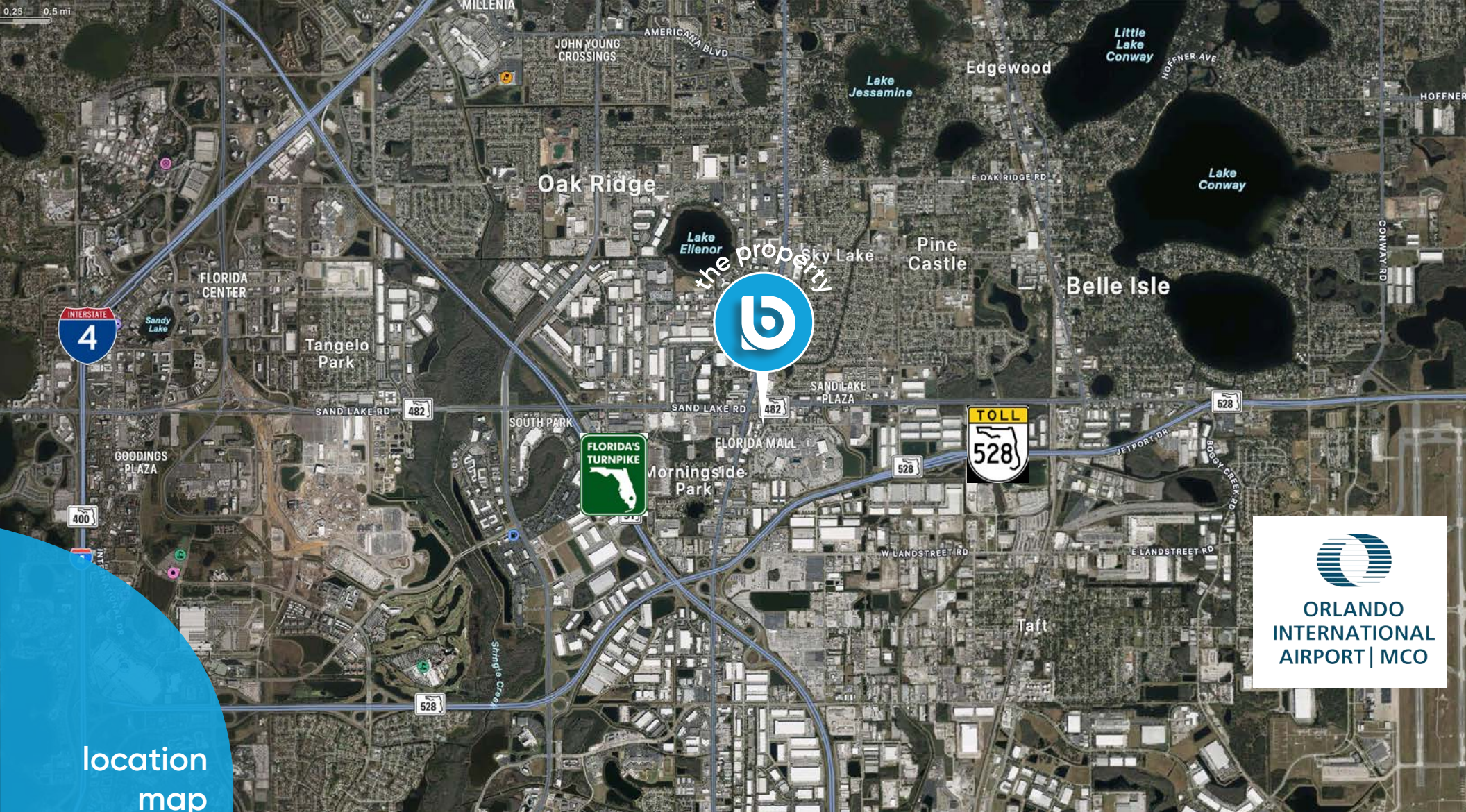
- Large open space
- reception/waiting
- Kitchenette
- 7 private offices



space details



for more information, contact patrick goetz vice president (407) 734.7210 pat@BBDRE.com



location
map

demographics

Radius	Population	HH Income	Businesses	Employees
1-Mile	5,679	\$65,925	1,217	16,022
2-Mile	22,686	\$60,287	3,630	40,459
3-Mile	70,900	\$62,232	6,315	67,455



for more information, contact patrick goetz vice president (407) 734.7210 pat@BBDRE.com