



9251

9241

9221

EQUUS COURT AVAILABLE



9251, 9221, 9241 RUMSEY RD, COLUMBIA, MD 21045

Availabilities

- Lease:
 - 9241- 10,800 SF
- 9221:
 - Suite 9: 3,900 SF
 - Suite 10: 3,900 SF
 - 7,800 SF contiguous
- Sale or lease:
 - 9251- 39,222 SF

Location highlights



Strategic Mid-Atlantic Position
Located in Howard County between Baltimore (~20 miles) and Washington, DC (~25 miles)



Transportation Hub
Excellent highway access via I-95, Route 29, Route 32, and I-70



Airport Proximity
~15 minutes to BWI Marshall Airport



Transit Access
MARC train service connecting to DC and Baltimore



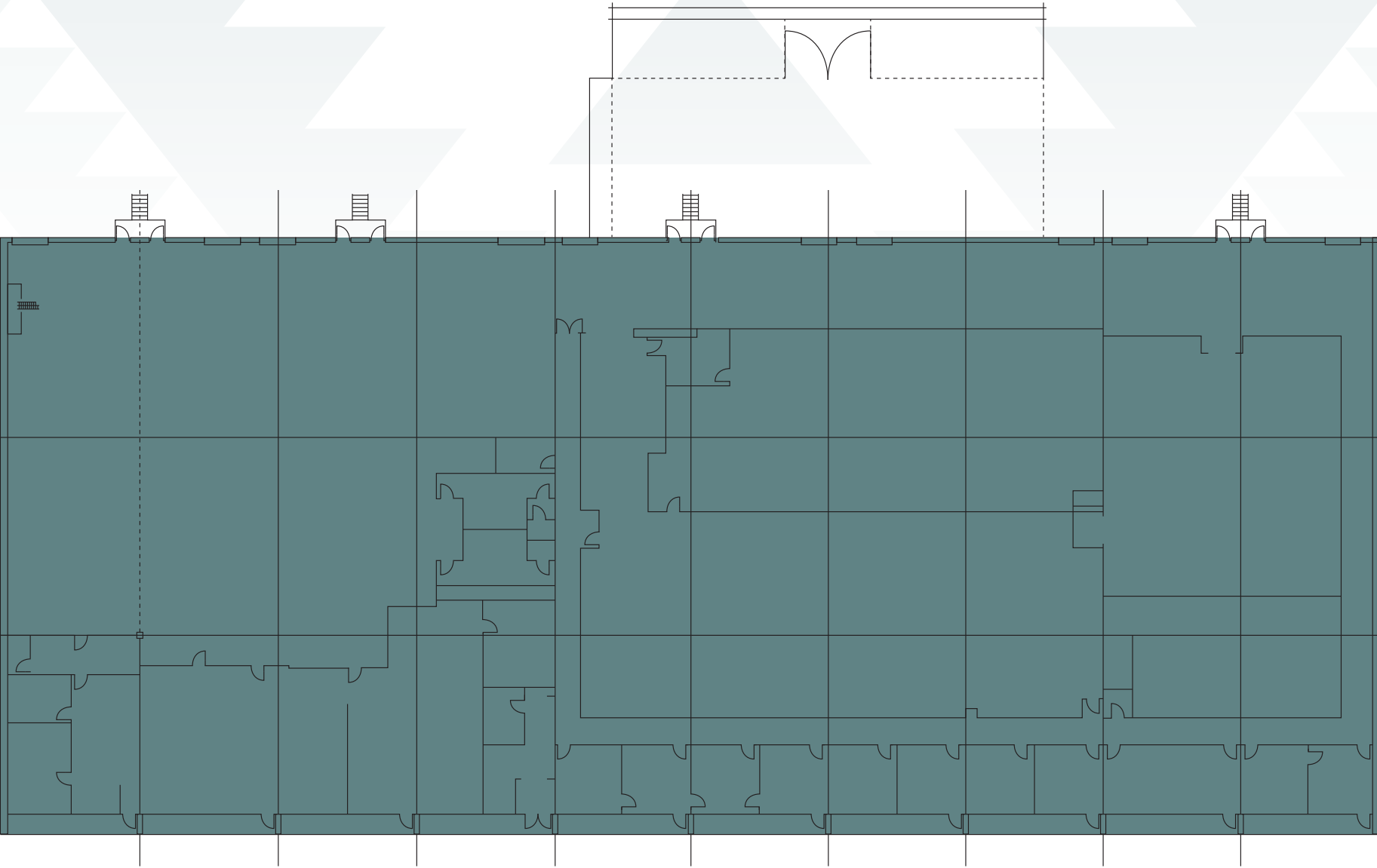
Amenity map



9251 Rumsey Road

Property information

Available for sale or lease
Flex/industrial building
RBA: 39,222 SF
Rent: \$15.50 NNN
Available: April 1, 2026
Ceiling height: 19'
10 dock doors (9 standard and 1 oversized)
8 positions for future dock doors
Shared parking at a ratio of 2.52/1000



9221 Rumsey Road

For lease

Dock loading

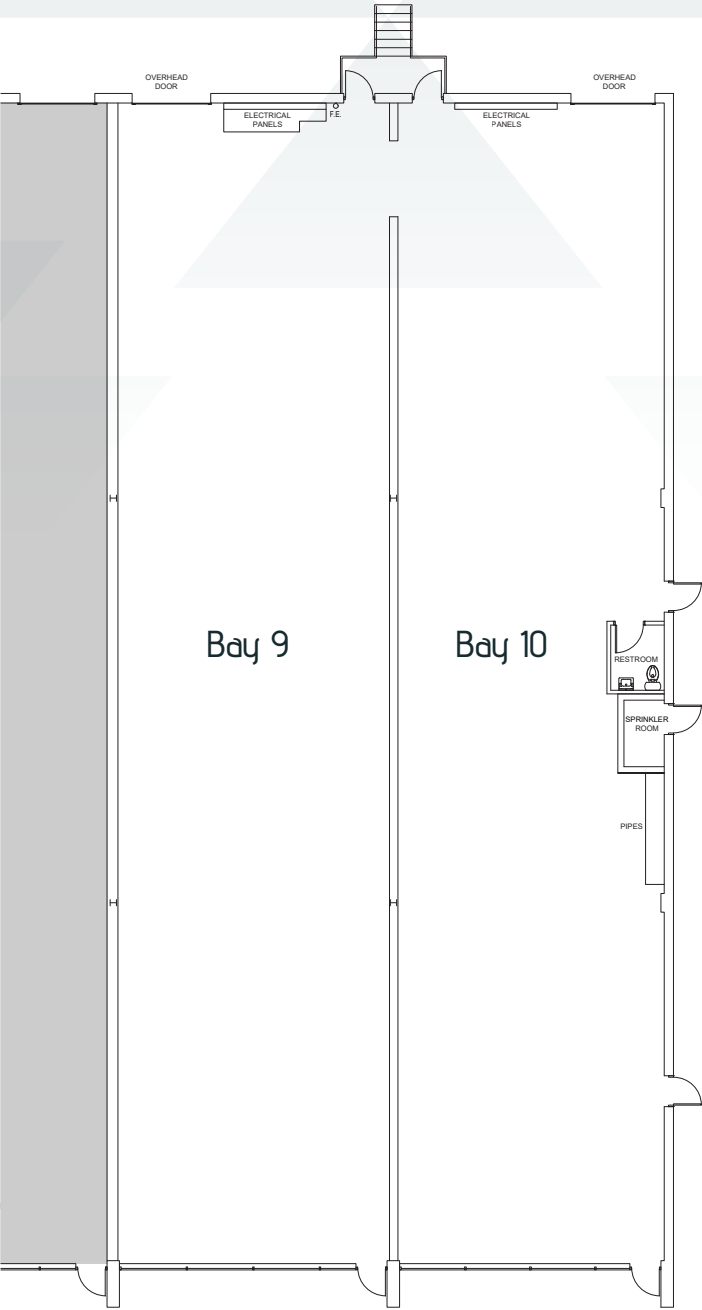
Rent: \$15.50 NNN

Available: April 1, 2026

Bay 9: 3,900 sf

Bay 10: 3,900 sf

Clear Height: 18'



9241 Rumsey Road

For lease

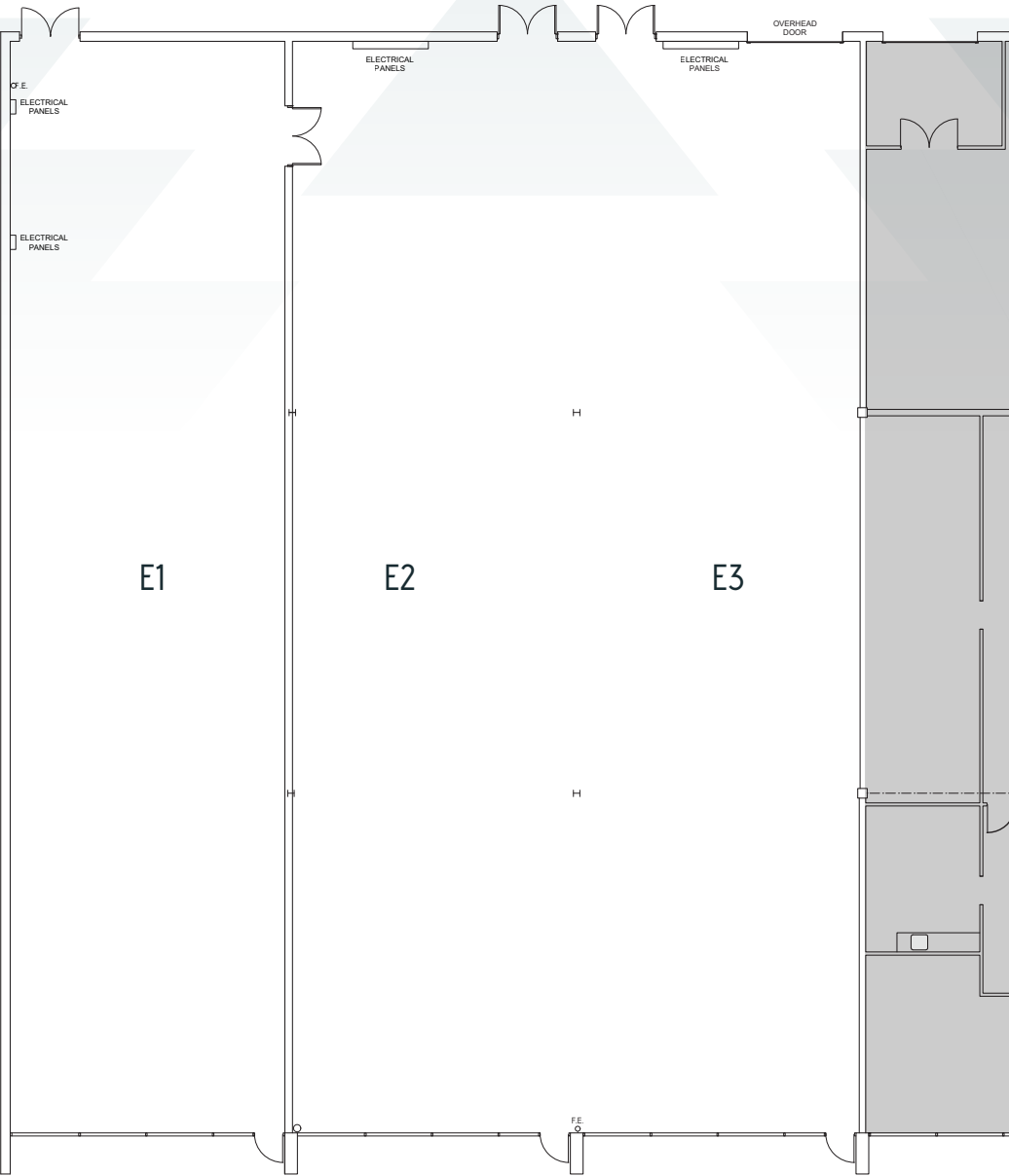
Dock loading

Rent: \$15.50 NNN

Available: April 1, 2026

E1, E2 & E3: 10,800 sf

Clear Height: 18'



**Rob
Freedman**

+1 (410) 952-9444
rob.freedman@jll.com

**Rick
Williamson**

+1 (410) 404-5522
rick.williamson@jll.com

**Dominic
Digiovannantonio**

+1 (443) 452-1505
dom.digi@jll.com

**Rachel
Cappetta**

+1 (443) 451-2607
rachel.cappetta@jll.com

Although information has been obtained from sources deemed reliable, JLL does not make any guarantees, warranties or representations, express or implied, as to the completeness or accuracy as to the information contained herein. Any projections, opinions, assumptions or estimates used are for example only. There may be differences between projected and actual results, and those differences may be material. JLL does not accept any liability for any loss or damage suffered by any party resulting from reliance on this information. If the recipient of this information has signed a confidentiality agreement with JLL regarding this matter, this information is subject to the terms of that agreement. ©2025 Jones Lang LaSalle Brokerage, Inc. All rights reserved.

