

845-855

Avenue du Pacifique

Lachine

M
TRIMONT

INDUSTRIAL BUILDING
FOR SALE OR FOR LEASE



VIDEO

PROPERTY DETAILS



FEATURES

- Strategically located near major highway 20, highway 138, and key transportation routes.
- Excellent redevelopment potential
- Offers substantial industrial space suitable for various operations, from manufacturing to warehousing.
- Access to a skilled and diverse labor pool in the Lachine and Greater Montreal area.

ZONING DETAILS

ZONE: I - 341

**INDUSTRIAL: 211, 241, 242, 243, 250,
260, 320, 330, 350, 440, 481**



TOTAL BUILDING AREA

± 80 836 SQ.FT.

WAREHOUSE

± 72 639 SQ.FT.

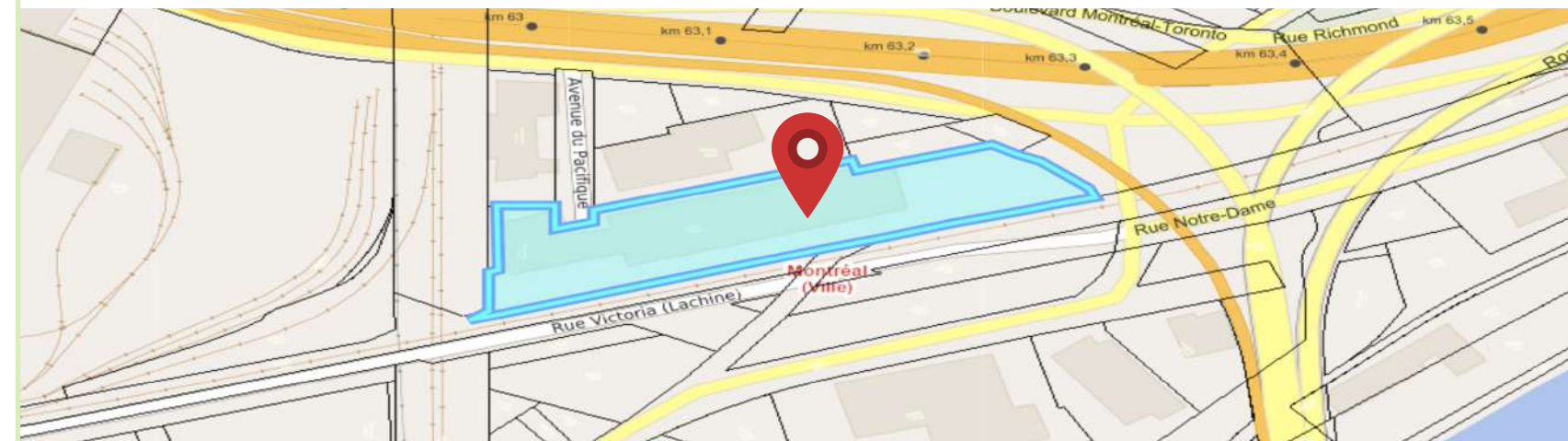
OFFICE

± 8 197 SQ.FT.



LAND

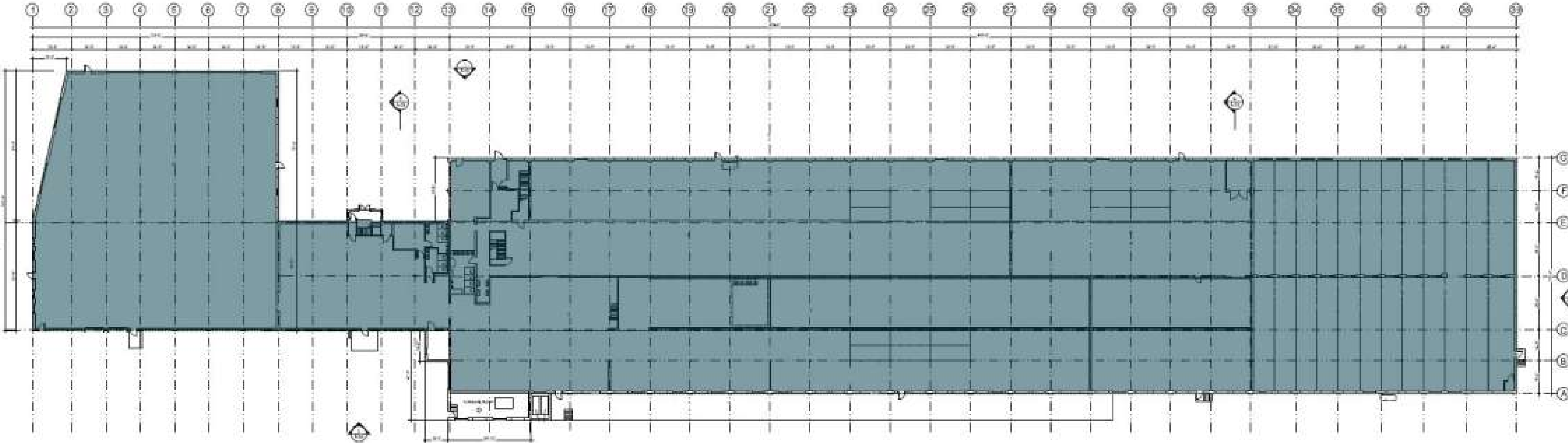
± 181 572 SQ.FT.



INDUSTRIAL BUILDING FOR SALE OR FOR LEASE

CONTACT US FOR MORE INFORMATION

PLANS



INDUSTRIAL BUILDING FOR SALE OR FOR LEASE

CONTACT US FOR MORE INFORMATION

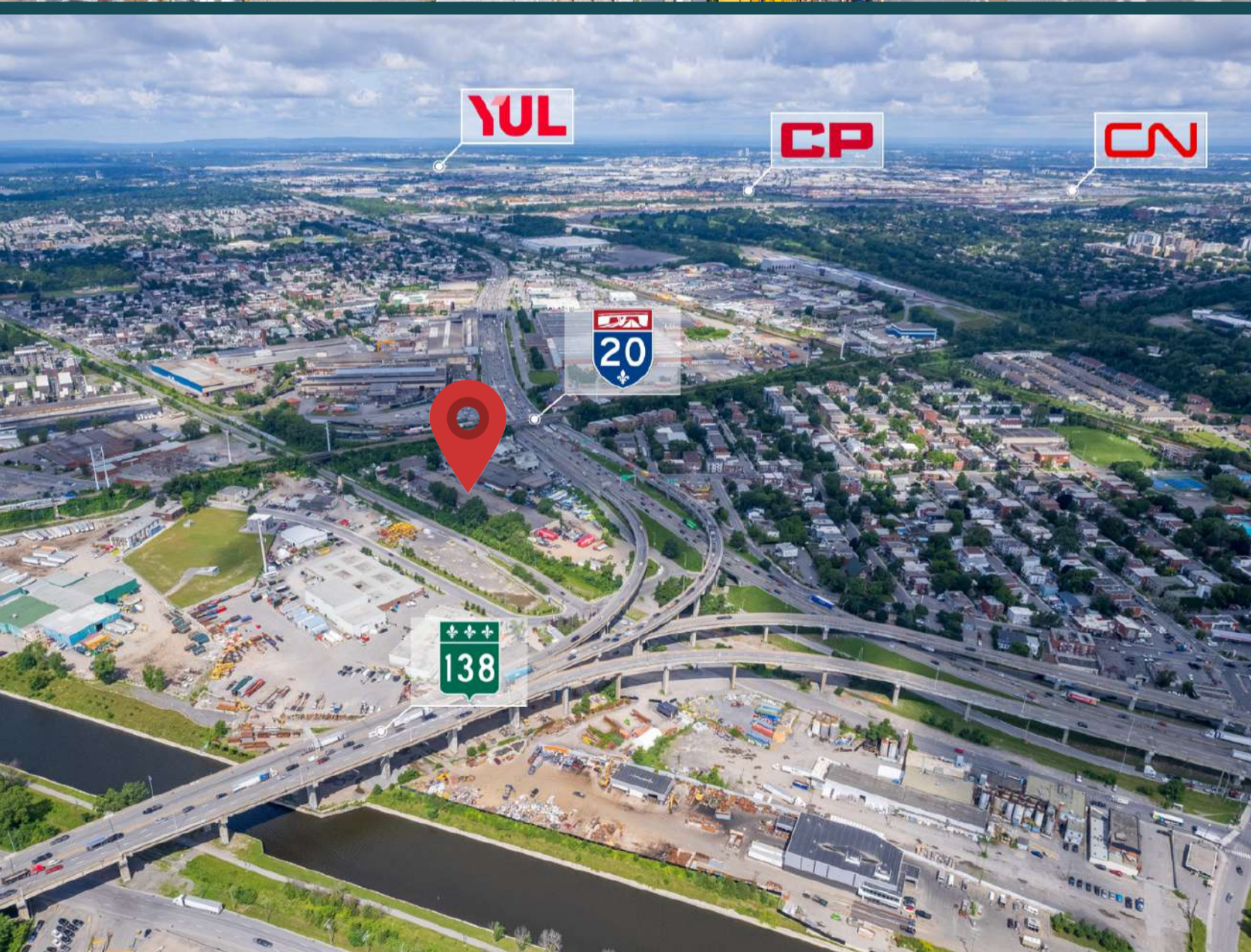


LOCATION

Strategically located near major **highway 20, highway 138, and key transportation routes.**

1	Dépotium Mini Entrepôt
2	Spinelli Honda
3	CAD Railways
4	Dechotec
5	Hydro-Québec
6	Amazon
7	Club de Golf Meadowbrook
8	Rona
9	Garage Pro Vitesse
10	Brinks
11	Sami Fruit
12	Prince Logistic
13	Toitures Trois Étoiles
14	U-Haul

INDUSTRIAL BUILDING FOR SALE OR FOR LEASE
CONTACT US FOR MORE INFORMATION



INDUSTRIAL BUILDING FOR SALE OR FOR LEASE
CONTACT US FOR MORE INFORMATION

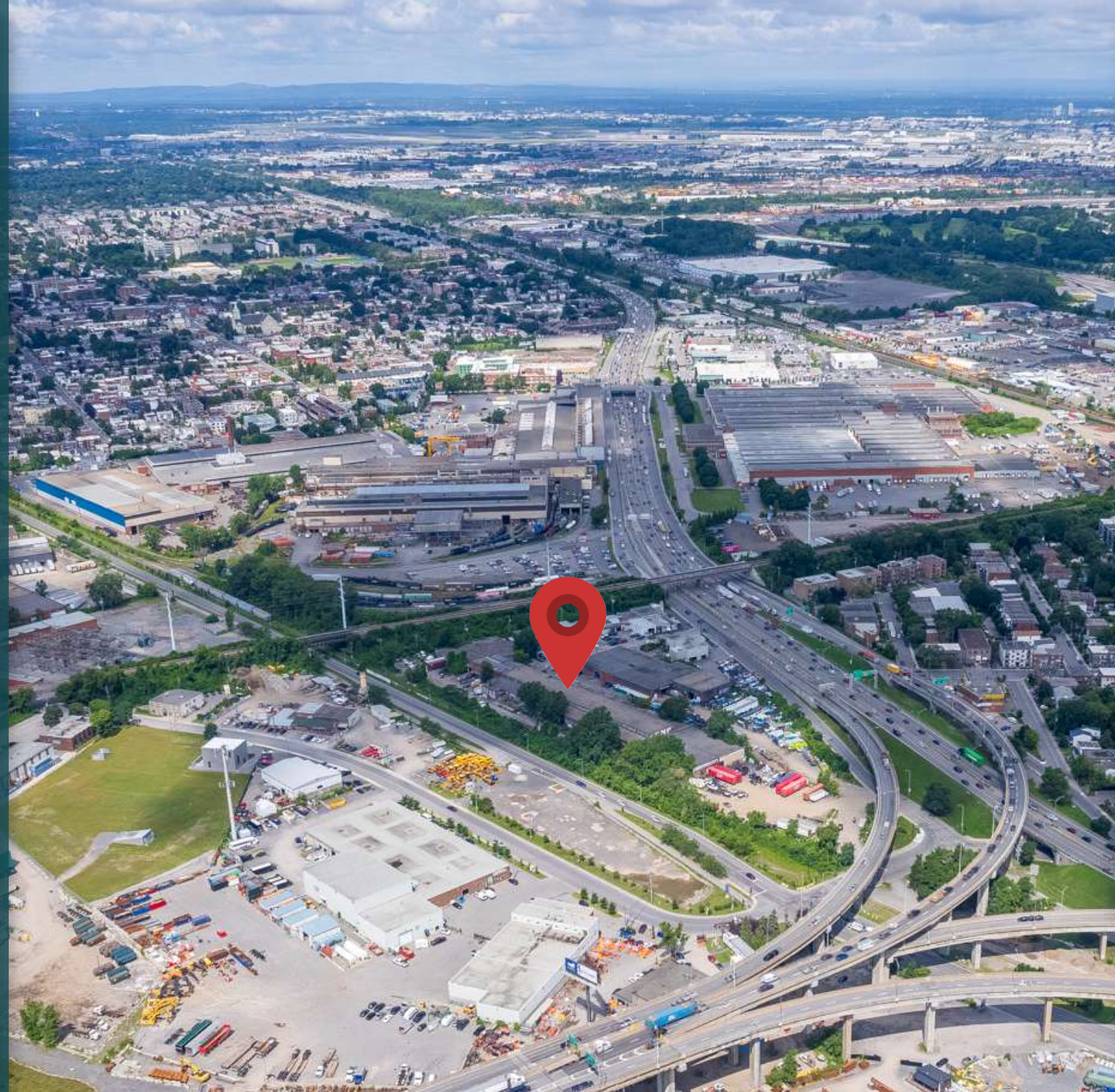


Real Estate Agency

4480 Chemin de la Côte-de-Liesse, suite 290,
Mont-Royal (Montréal), QC, H4N 2R1

514.736.0511

DISCLAIMER: Information provided is based on sources considered reliable, without a guarantee of accuracy. No responsibility and/or warranty is assumed by the broker. This document is intended solely for informational purposes, and is made subject to errors, modifications, and omissions. The purchaser/lessee is encouraged to perform proper due diligence prior to an acquisition or lease agreement. This is not an offer or promise to sell/lease that could bind the vendor/lessor to the purchaser/lessee, but rather an invitation to submit such offers or promises. Any sale is made without legal warranty.



Peter Mouhteros

Partner

Certified Real Estate Broker, AEO

📞 514.229.3016

✉ pmouhteros@trimontcanada.com

Dimitri (Jimmy) Mouhteros *

Partner

Commercial Real Estate Broker

📞 514.296.6203

✉ jmouhteros@trimontcanada.com

* Real estate broker acting within the business corporation Dimitri Mouhteros inc.

Robbie Kohos

Associate

Commercial Real Estate Broker

📞 438.229.4741

✉ rkohos@trimontcanada.com

Owen Paek

Senior Associate

Commercial Real Estate Broker

📞 514.816.2920

✉ opaek@trimontcanada.com

Germando Mazzotta **

Partner

Commercial Real Estate Broker

📞 514.743.5013

✉ gmazzotta@trimontcanada.com

** Real estate broker acting within the business corporation Germando Mazzotta inc.