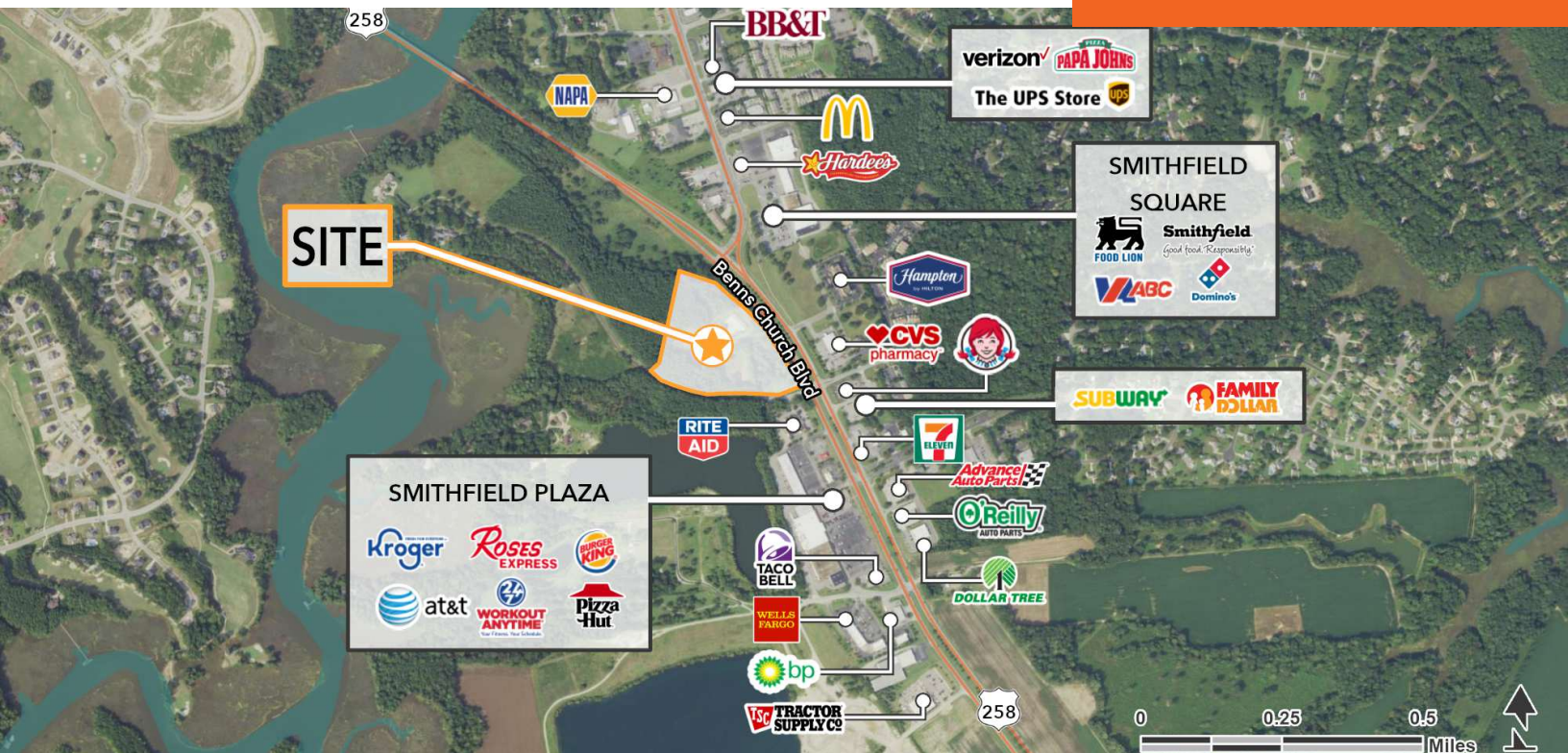


18403 CYPRESS CROSSING

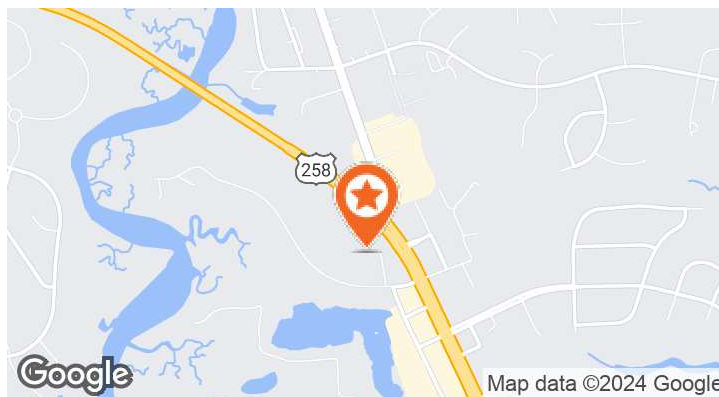
SMITHFIELD, VA 23430

FOR LEASE



LOCATION DESCRIPTION

Located off of Bennis Church Blvd in the heart of Smithfield. This site is surrounded by numerous new residential neighborhoods in various stages of completion. Area retailers include Food Lion, Kroger, Rose's, Tractor Supply, Family Dollar and many more.



PROPERTY HIGHLIGHTS

- New Development
- Outparcels Available
- Great Visibility and easy access
- Traffic Counts: Bennis Church Blvd 25,000 AADT

DEMOGRAPHICS

	1 MILE	5 MILES	10 MILES
Population	3,105	23,958	71,963
Households	1,175	9,477	27,564
Average Household Income	\$134,986	\$126,030	\$121,405
Median Household Income	\$108,492	\$95,525	\$84,497



KAREN MIKULSKI
karen.mikulski@tscg.com
757.586.4104

DEBRA RAMEY
debra.ramey@tscg.com
757.586.4102

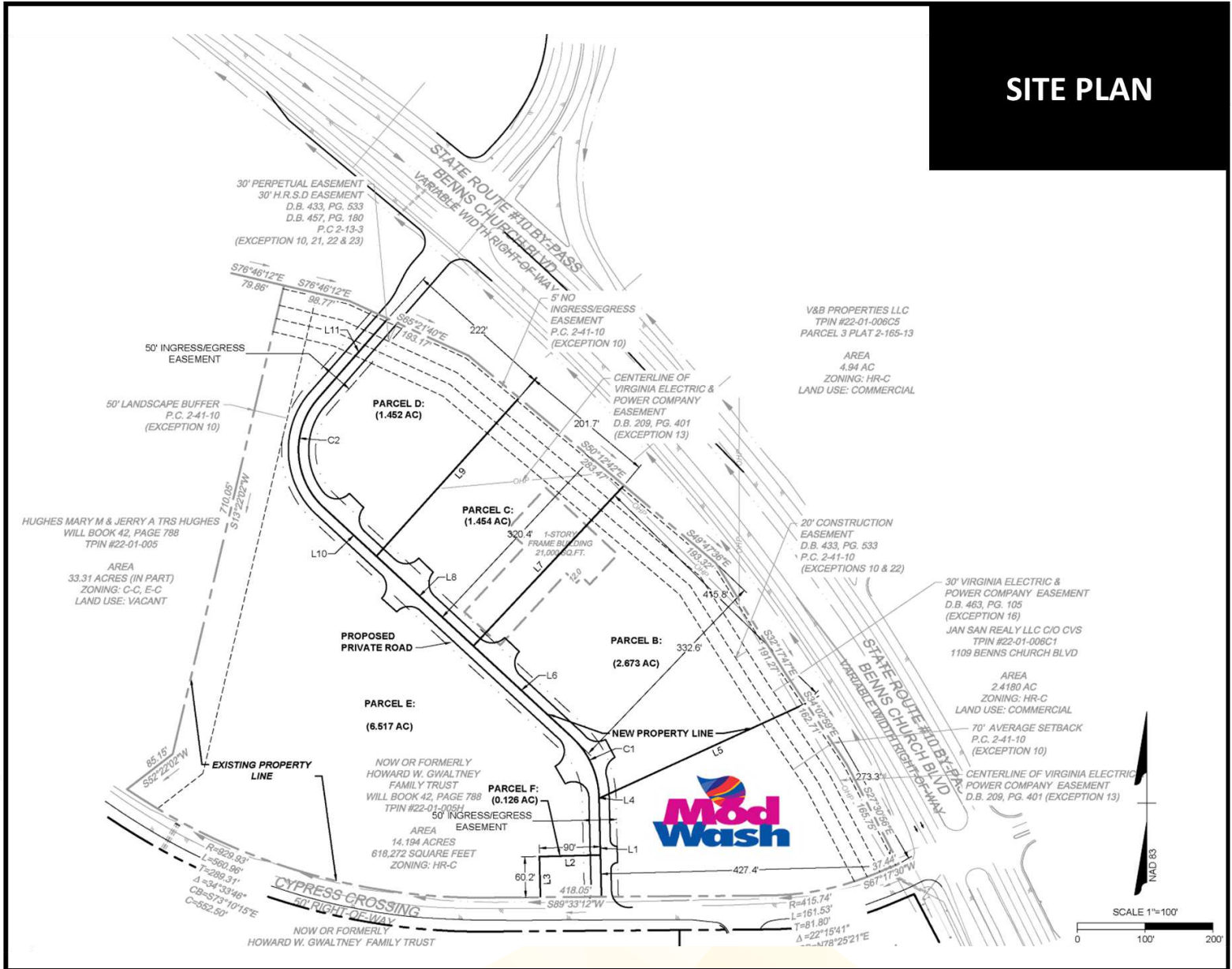
DEBBIE MAURO
debbie.mauro@tscg.com
757.586.4107

18403 CYPRESS CROSSING

SMITHFIELD, VA 23430

FOR LEASE

SITE PLAN



KAREN MIKULSKI
 karen.mikulski@tscg.com
 757.586.4104

DEBRA RAMEY
 debra.ramey@tscg.com
 757.586.4102

DEBBIE MAURO
 debbie.mauro@tscg.com
 757.586.4107