

Second Floor Creative Space for Lease

4517 LORAIN AVENUE, CLEVELAND, OHIO 44102

★ ★ ★
OHIO CITY



AODK vision
architecture
branding

 **CUSHMAN &
WAKEFIELD**

CRESCO
Real Estate

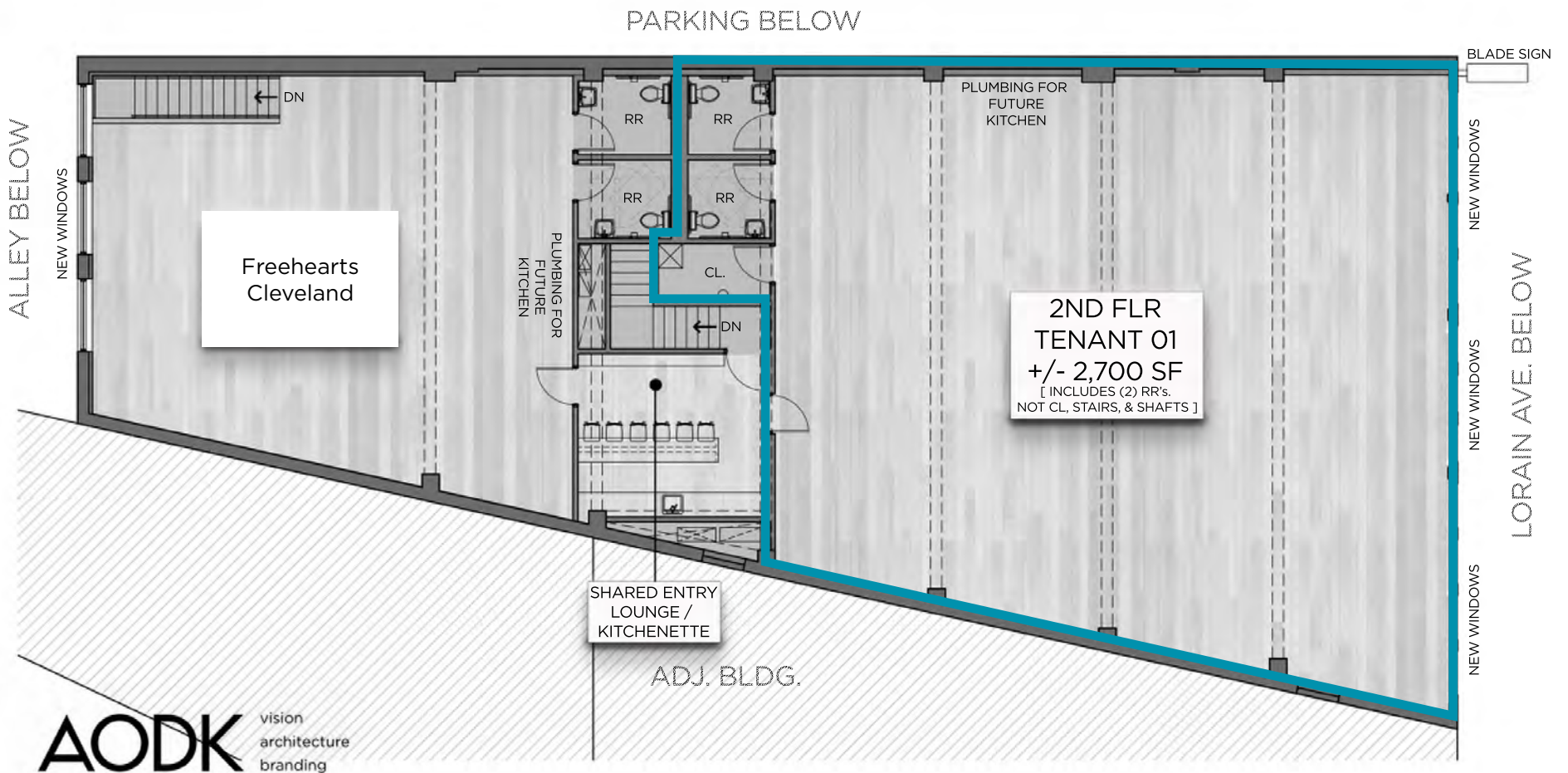
4517 Lorain Avenue

- 2nd floor office/creative/retail space in 2024 gut rehab historic property on Lorain Avenue in Ohio City
- Perfect for creative or arts focused commercial user
- Brand new windows, HVAC, ceilings, bathrooms, and kitchenette
- Above the brand new Guitar Riot showroom and Freehearts Cleveland on the second floor
- Immediately next door to Arsenal Cider House and coming soon, the new Visible Voice Books, which include a brand new cafe, bar, and 135 seat performance venue featuring national touring acts



Quick Stats

Available 2nd Floor	± 2,700 SF
Available on	9/1/2024
Lorain Rd Traffic	9,473 VPD
Distance to I-90	0.1 Miles
Lease Rate	\$18.00/SF MG



292,668

Population
(2025 | 5 Mile)

35.6

Median Age
(2025 | 5 Mile)

135,061

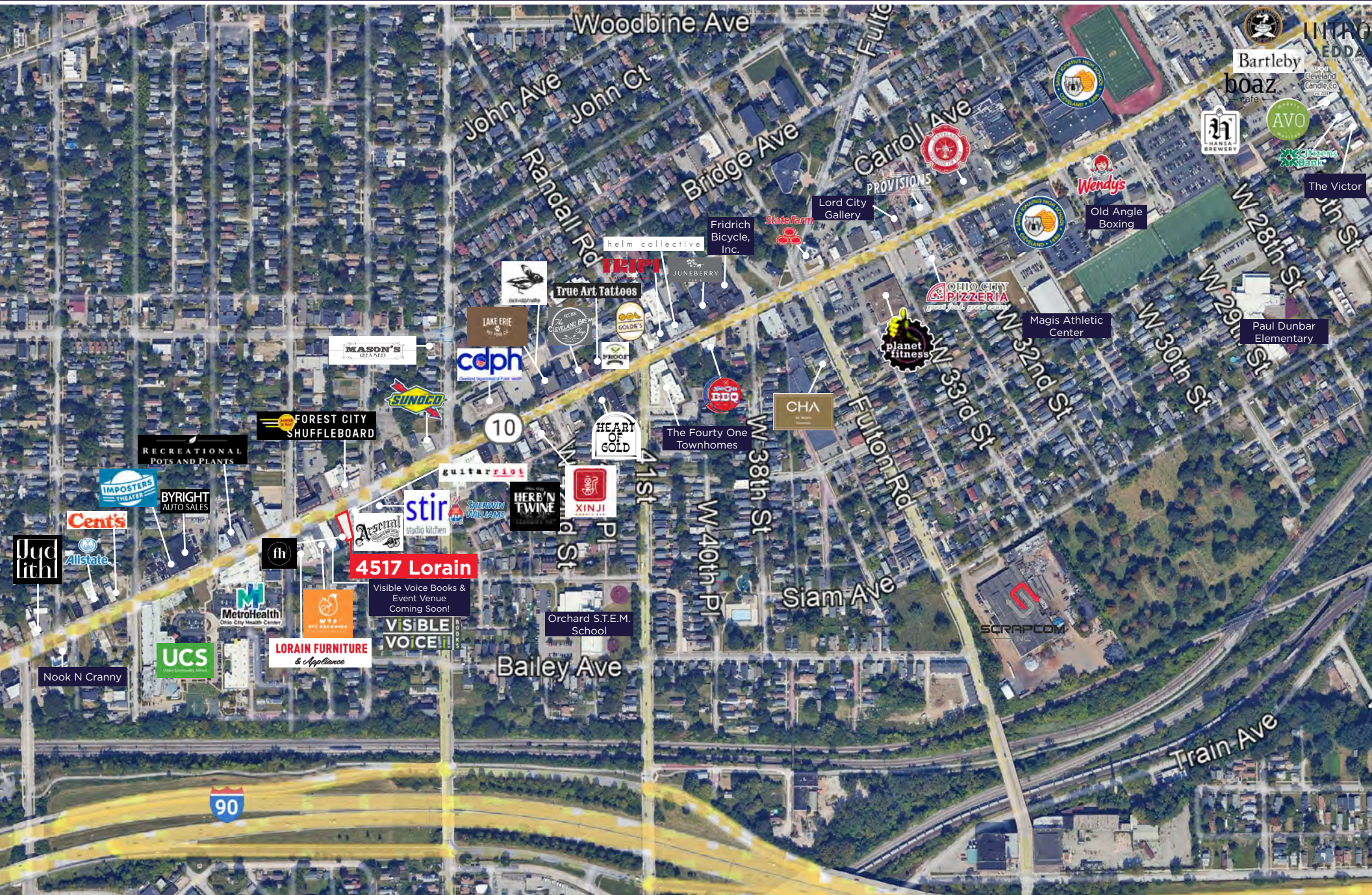
Households
(2025 | 5 Mile)

\$72,172

Household Income
(2025 | 5 Mile)

13,618

Total Businesses
(2025 | 5 Mile)





**4517 LORAIN AVENUE
CLEVELAND, OHIO 44102**

ALEX SMITH

Senior Associate

asmith@crescorealestate.com

+1 216 525 1490

CAMERON CALLAHAN

Associate

ccallahan@crescorealestate.com

+1 216 232 4101

Cushman & Wakefield | CRESCO
6100 Rockside Woods Blvd, Suite 200
Cleveland, Ohio 44131

crescorealestate.com

©2024 Cushman & Wakefield. All rights reserved. The information contained in this communication is strictly confidential. This information has been obtained from sources believed to be reliable but has not been verified. NO WARRANTY OR REPRESENTATION, EXPRESS OR IMPLIED, IS MADE AS TO THE CONDITION OF THE PROPERTY (OR PROPERTIES) REFERENCED HEREIN OR AS TO THE ACCURACY OR COMPLETENESS OF THE INFORMATION CONTAINED HEREIN, AND SAME IS SUBMITTED SUBJECT TO ERRORS, OMISSIONS, CHANGE OF PRICE, RENTAL OR OTHER CONDITIONS, WITHDRAWAL WITHOUT NOTICE, AND TO ANY SPECIAL LISTING CONDITIONS IMPOSED BY THE PROPERTY OWNER(S). ANY PROJECTIONS, OPINIONS OR ESTIMATES ARE SUBJECT TO UNCERTAINTY AND DO NOT SIGNIFY CURRENT OR FUTURE PROPERTY PERFORMANCE.