



2345 SOUTH ALMA SCHOOL ROAD

MESA, ARIZONA 85210

- 1,260 Square Feet Available
- Lease Rate: \$20.50 PSF, FS
- Monument Signage Available
- Lush Landscaping, Garden Courtyard Environment
- Shared Conference Room Available for Tenant Use
- Elevator
- Covered Parking Available
- Strong Traffic Counts & Daytime Employment
- S/SEC Baseline & Alma School Road
- Close Proximity to US-60

DEMOGRAPHICS	1 MILE	3 MILES	5 MILES
AVERAGE AGE:	37	35.7	33.9
POPULATION:	17,571	137,210	427,624
AVERAGE HH INCOME:	\$99,755	\$85,557	\$86,693

TRAFFIC COUNTS	VPD
N ORACLE ROAD:	38,218
W ORANGE GROVE RD:	16,289

YEAR BUILT	1987 (Renovated 2014)
LOT SIZE	1.17 AC
ZONING	C-O, Mesa
PARCEL NUMBER	302-04-898

Matt Harper, CCIM

Senior Vice President

623.692.9435

matt@citywidecre.com

2122 East Highland Avenue, Suite 225 • Phoenix, Arizona 85016 • 602.313.1000 • citywidecre.com

Leah Motsinger

Senior Associate

602.423.3619

leah@citywidecre.com



Matt Harper, CCIM

Senior Vice President
623.692.9435
matt@citywidecre.com

Leah Motsinger

Senior Associate
602.423.3619
leah@citywidecre.com

2122 East Highland Avenue, Suite 225 • Phoenix, Arizona 85016 • 602.313.1000 • citywidecre.com



SUITE	TENANT	SF
100	FARMERS INSURANCE	1,014
101	KELLY MARLEY-SMITH PLLC	1,153
102	ANGRY CRAB SHACK	1,555
104-105	BEHR, FONTAINE	1,956
106-107	ANGRY CRAB SHACK	4,087
110	LESLIE PECHKUROW, LPC	662
111	FORWARD MEDICAL	432
200	AVAILABLE 7/1/26	1,260

SUITE	TENANT	SF
202	S IS FOR SKIN, LLC	707
203	ERICA SANCHEZ	1,248
204	ALIGNED HOSPITALITY MANAGEMENT	2,142
206	TECHSTAFF OF ARIZONA	1,001
208	ARMSTRONG CONSULTANTS	1,931
209	CREATIVE PATH THERAPY	1,312
210	TURPIN ENTERPRISES	1,002

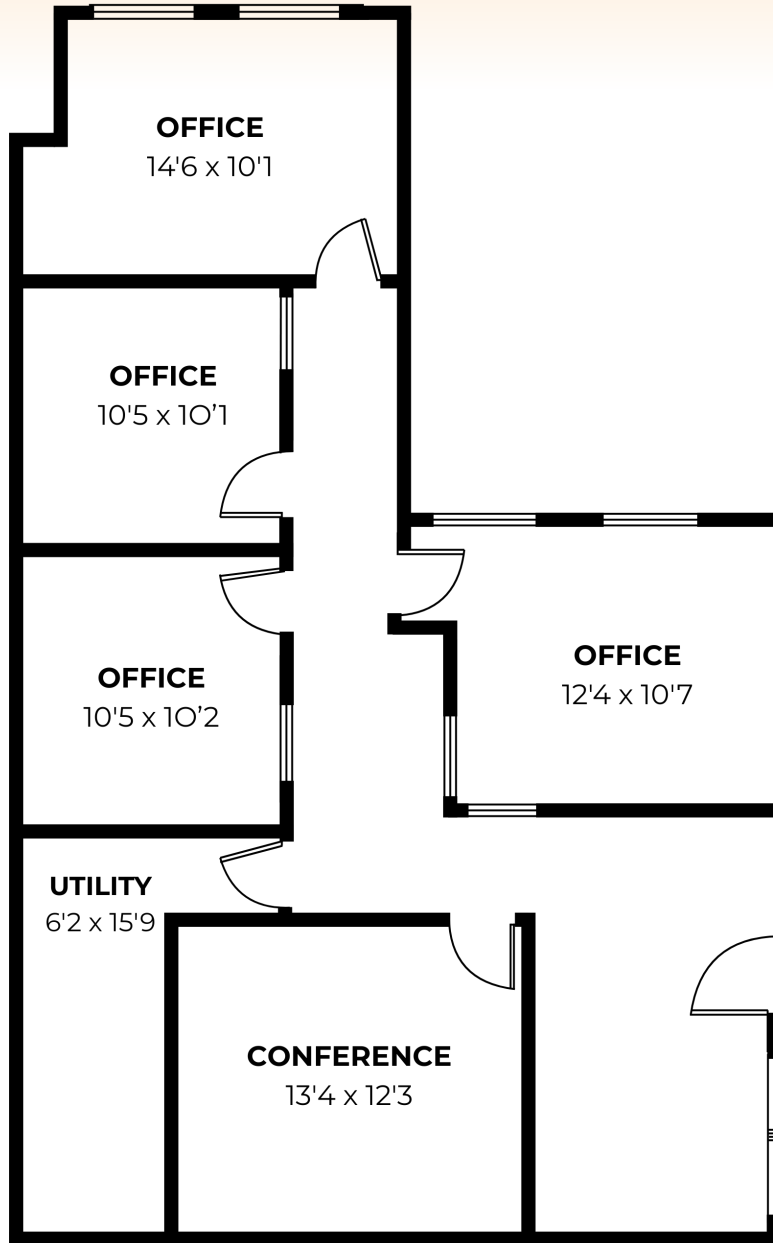
Matt Harper, CCIM

Senior Vice President
 623.692.9435
 matt@citywidecre.com

Leah Motsinger

Senior Associate
 602.423.3619
 leah@citywidecre.com

2122 East Highland Avenue, Suite 225 • Phoenix, Arizona 85016 • 602.313.1000 • citywidecre.com



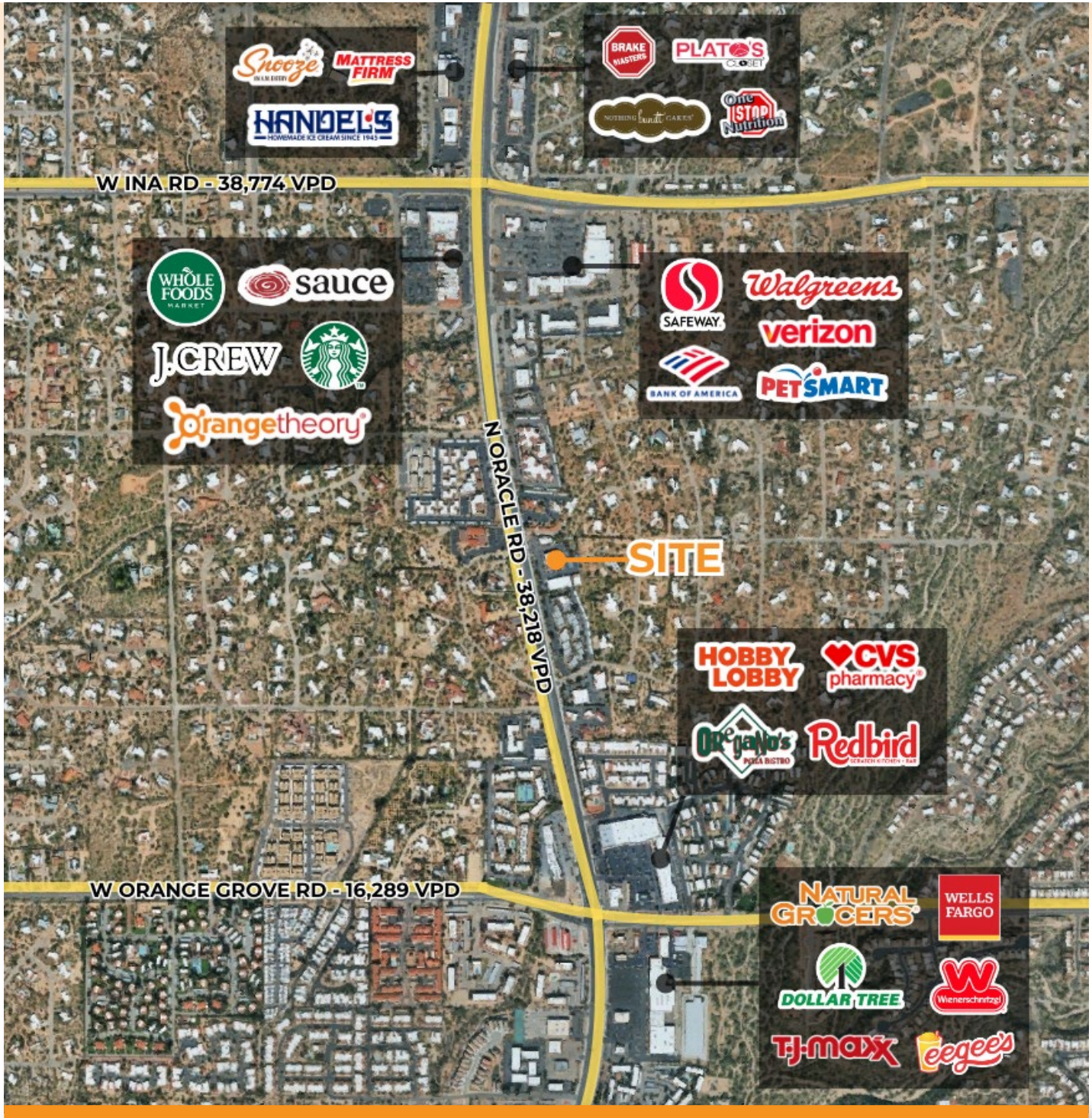
Matt Harper, CCIM

Senior Vice President
623.692.9435
matt@citywidecre.com

Leah Motsinger

Senior Associate
602.423.3619
leah@citywidecre.com

2122 East Highland Avenue, Suite 225 • Phoenix, Arizona 85016 • 602.313.1000 • citywidecre.com



Matt Harper, CCIM

Senior Vice President
623.692.9435
matt@citywidecre.com

Leah Motsinger

Senior Associate
602.423.3619
leah@citywidecre.com

2122 East Highland Avenue, Suite 225 • Phoenix, Arizona 85016 • 602.313.1000 • citywidecre.com