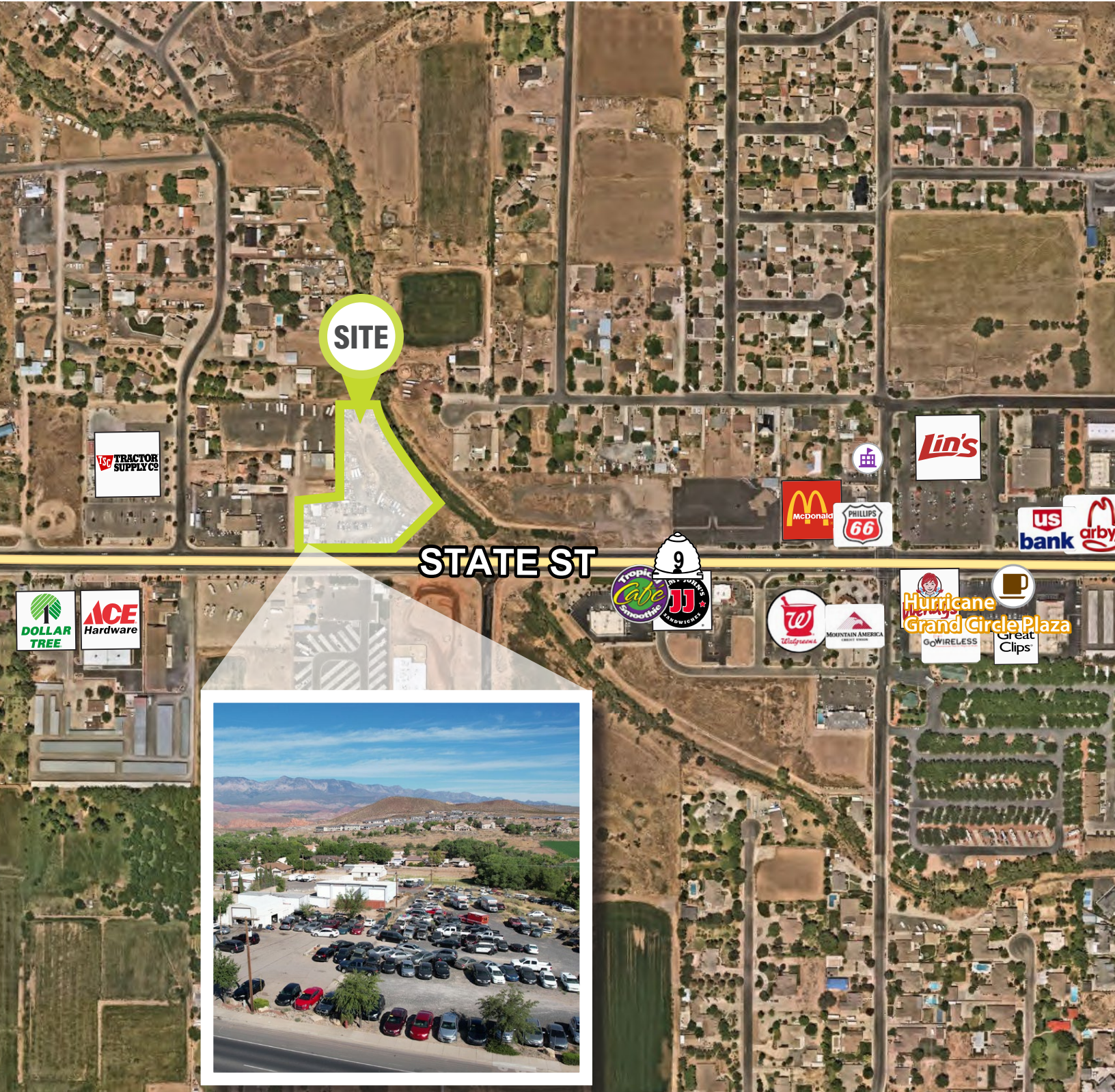


# FORMER AHERN RENTALS

1490 W State Street | Hurricane, UT 84737



# FORMER AHERN RENTALS

1490 W State Street | Hurricane, UT 84737



**FOR SALE**  
\$2,250,000

**ZONING CODE**

## Property Highlights

- Building 1: 2,544 SF (Sales Office)
- Building 2: 1,200 SF (Warehouse)
- Total Acreage: 3.9
- Surface Type: Pavement and Road-Base
- Two Points of Yard Access
- Partially Fenced Site
- Year built: 1980
- ADT: 42,000
- Zoning: HC (Highway Commercial)
- Great visibility on State Street
- Convenient access off I-15 and Highway 9

### Contact

**SKYLER PETERSON, SIOR** Executive Vice President  
m 801.656.7354  
speterson@legendcommercial.com

**TRE BOURDEAUX, SIOR** Vice President  
m 801.824.0397  
tbourdeaux@legendcommercial.com

**PARKER TAGGART** Senior Associate  
m 801.928.1815  
ptaggart@legendcommercial.com

**LEGEND**  
PARTNERS ■■■■  
801.930.6750 | www.legendllp.com  
2180 S 1300 E, Suite 240 | Salt Lake City, UT 84106

### Contact

**SKYLER PETERSON, SIOR** Executive Vice President  
m 801.656.7354  
speterson@legendcommercial.com

**TRE BOURDEAUX, SIOR** Vice President  
m 801.824.0397  
tbourdeaux@legendcommercial.com

**PARKER TAGGART** Senior Associate  
m 801.928.1815  
ptaggart@legendcommercial.com

**LEGEND**  
PARTNERS ■■■■  
801.930.6750 | www.legendllp.com  
2180 S 1300 E, Suite 240 | Salt Lake City, UT 84106

# FORMER AHERN RENTALS

1490 W State Street | Hurricane, UT 84737



## Contact

**SKYLER PETERSON, SIOR**  
Executive Vice President  
m 801.656.7354  
speterson@legendcommercial.com

**TRE BOURDEAUX, SIOR**  
Vice President  
m 801.928.1815  
tbourdeaux@legendcommercial.com

**PARKER TAGGART**  
Senior Associate  
m 801.930.6750  
ptaggart@legendcommercial.com

**LEGEND**  
PARTNERS ■■■■  
801.930.6750 | [www.legendllp.com](http://www.legendllp.com)  
2180 S 1300 E, Suite 240 | Salt Lake City, UT 84106

© Legend Partners, LLP. All rights reserved. All information contained herein is from sources deemed reliable; however, no representation or warranty is made to the accuracy thereof.

## Contact

**SKYLER PETERSON, SIOR**  
Executive Vice President  
m 801.656.7354  
speterson@legendcommercial.com

**TRE BOURDEAUX, SIOR**  
Vice President  
m 801.928.1815  
tbourdeaux@legendcommercial.com

**PARKER TAGGART**  
Senior Associate  
m 801.930.6750  
ptaggart@legendcommercial.com

**LEGEND**  
PARTNERS ■■■■  
801.930.6750 | [www.legendllp.com](http://www.legendllp.com)  
2180 S 1300 E, Suite 240 | Salt Lake City, UT 84106

© Legend Partners, LLP. All rights reserved. All information contained herein is from sources deemed reliable; however, no representation or warranty is made to the accuracy thereof.