



Moses Tucker
PARTNERS

Little Rock (HEADQUARTERS)
200 River Market Ave, Suite 300
Little Rock, AR 72201
501.376.6555

Bentonville (BRANCH)
805 S Walton Blvd, Suite 123
Bentonville, AR 72712
479.271.6118

RETAIL BUILDING FOR LEASE

306 S Main Street, Bentonville, Arkansas



CONTACT US TODAY
479.271.6118 | mosestucker.com



Property Understanding

OVERVIEW

Offering	For Lease
Lease Rate & Type	\$38.86/SF NNN
Address	306 S Main Street
City/State	Bentonville, AR 72712
Building Size	±9,770 RSF
Property Type	Retail
Lot Size	±0.37 Acres
Zoning	<ul style="list-style-type: none"> Currently – D-C (Downtown Core) Proposed – T5.2 (Town Center High)

PROPERTY HIGHLIGHTS

- Modern new-construction retail building with mezzanine space, completed in Spring 2024
- Situated in the heart of downtown Bentonville amid ongoing new development, vibrant retail, and a dynamic restaurant scene
- Just 0.4 miles from the Bentonville Square, offering quick access to the city's downtown core
- Located within walking distance of Bentonville's dynamic Arts & Market Districts
- Approximately 1 mile from Walmart's global corporate campus



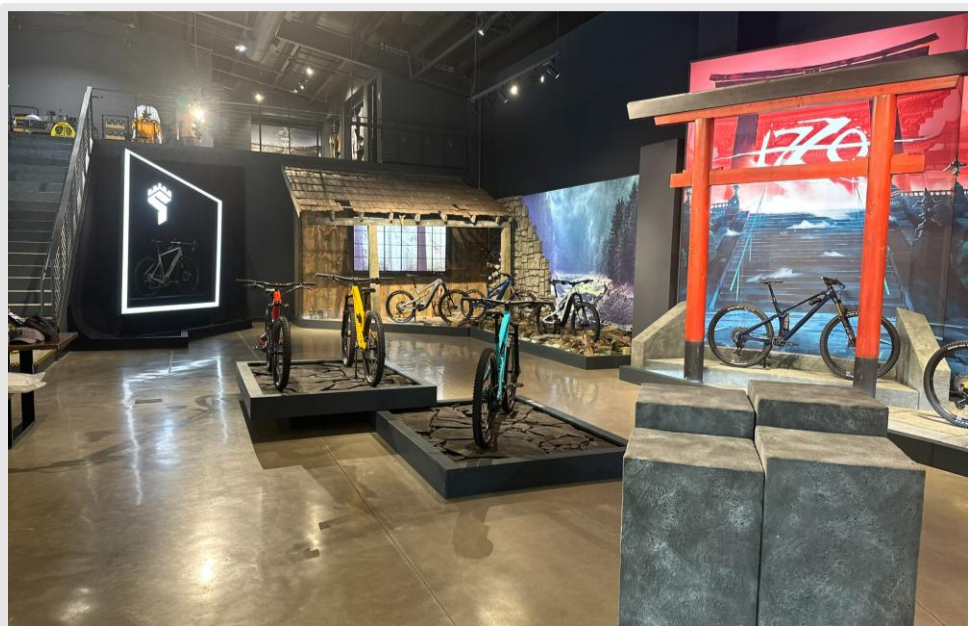
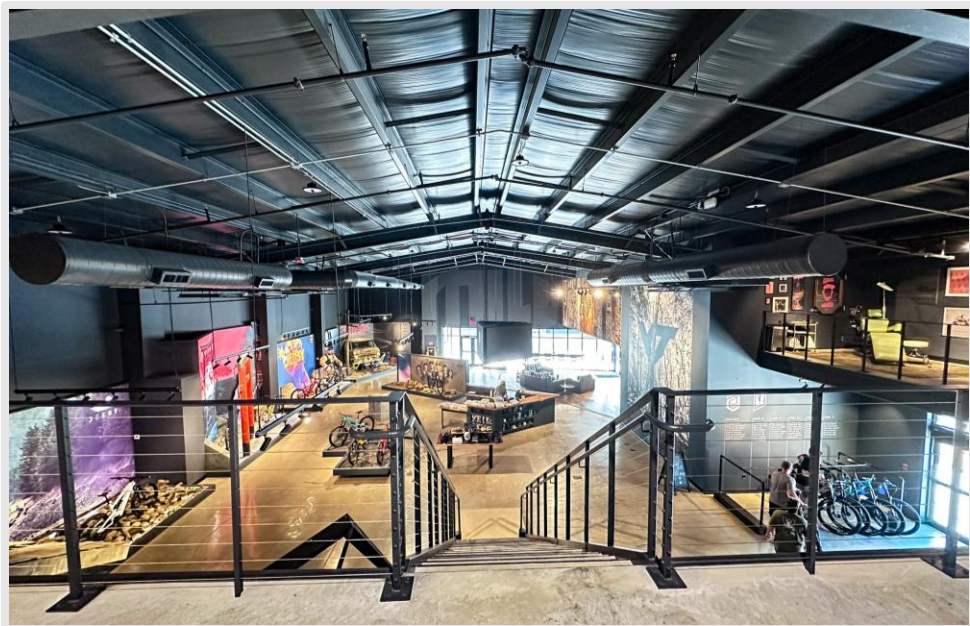
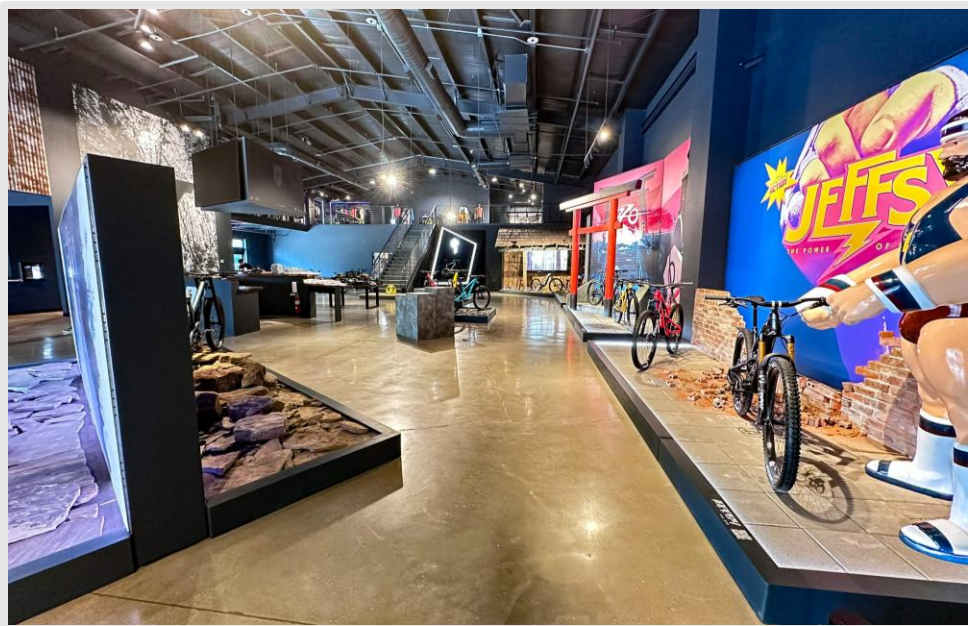


MARKET MAP



LOOKING NORTHEAST







Bentonville, AR



Bentonville is located in one of the fastest-growing regions in the country, Northwest Arkansas. In the past 20 years, Bentonville has transformed itself from a sleepy small Arkansas town to a bustling center of commerce and innovative entrepreneurialism, making it a community of choice in Northwest Arkansas.

Situated in Bentonville is the corporate headquarters of Walmart, the largest retailer in the world. With Walmart's prominence in the city, Bentonville is also an international focal point for retail suppliers and other supporting businesses.

Becoming a must-visit cycling and arts destination, Bentonville has been named the Mountain Biking Capital of the World. Visitors and residents alike can enjoy exploring the vast trail network from the downtown square. Bentonville is also home to the esteemed Crystal Bridges Museum of American Art, The Momentary, and The Amazeum.

DEMOGRAPHICS*

	3 MILES	5 MILES	10 MILES
Population	49,302	110,256	242,020
Households	19,257	41,264	89,142
Average Age	35.5	35.3	36.9
Average Household Income	\$129,259	\$125,265	\$122,037
Businesses	2,204	3,819	6,274

**Demographic details based on property location*

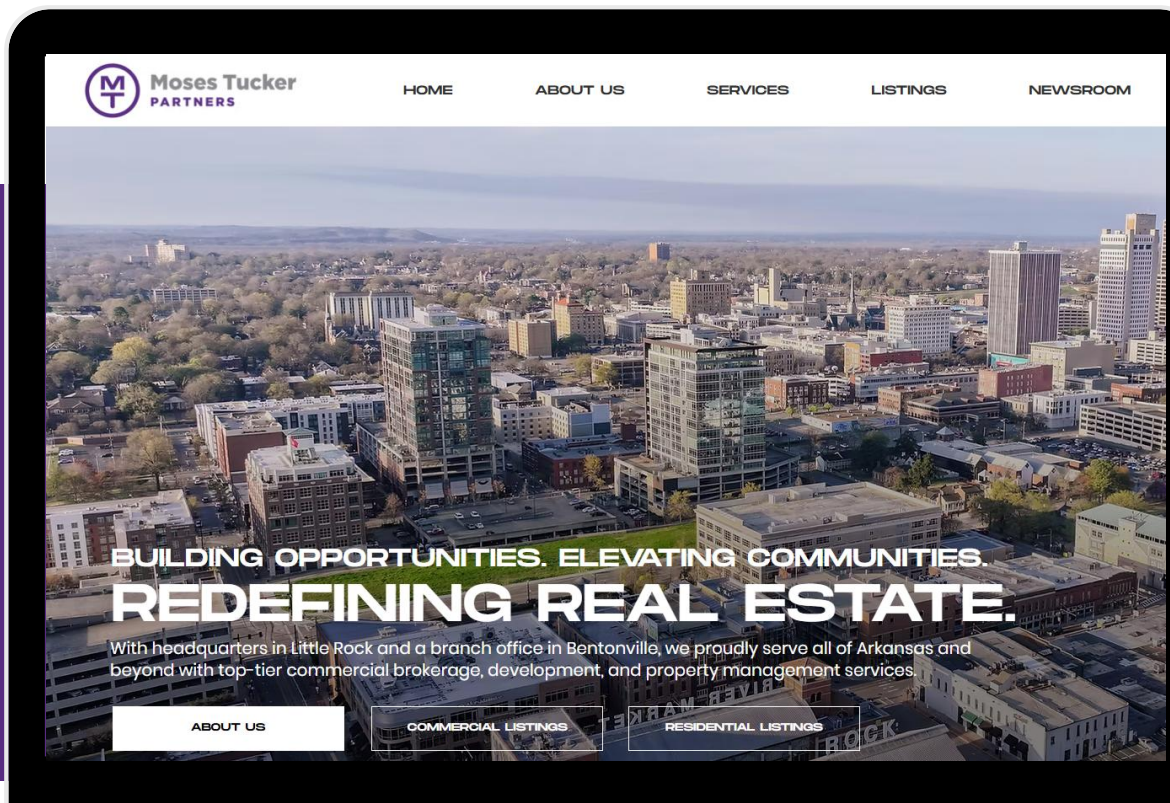
CONNECT

 (479) 271-6118

 www.mosestucker.com

 info@mosestucker.com

 805 S Walton Blvd, Suite 123,
Bentonville, AR 72712



Paul Esterer

Principal & NWA Market President

479.685.6612

pesterer@mosestucker.com

Josh Singleterry

Brokerage Director

479.466.9569

jsingleterry@mosestucker.com

DISCLAIMER

Moses Tucker Partners represents the owner of the property represented herein. Although all information furnished regarding property for sale, rental, or financing is from sources deemed reliable, such information has not been verified and no express representation is made nor is any to be implied as to the accuracy thereof and it is submitted subject to errors, omissions, change of price, rental or other conditions, prior sale, lease or financing, or withdrawal without notice and to any special conditions imposed by our principal.