

FOR SALE

220 E 22ND ST
FREMONT, NE 68025

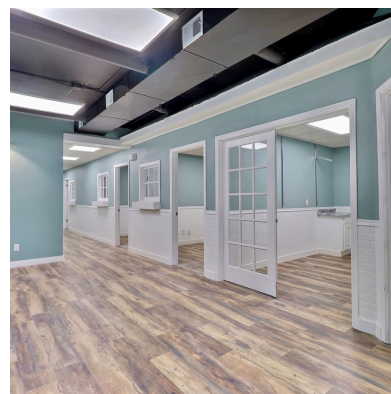
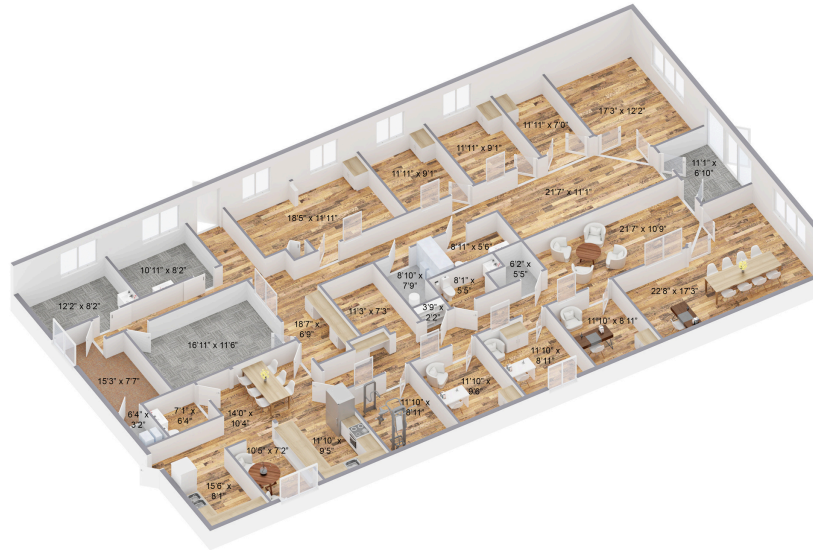
DODGE

COUNTY REALTY GROUP

4% LISTINGS, WHY PAY MORE?



220 EAST 22ND STREET, FREMONT, NE 68025, US



PROPERTY HIGHLIGHTS:

- Office building near Methodist Hospital
- Property currently has a long-term lease in place with Home Instead for roughly 40% of the building
- Highly visible corner lot with ample off-street parking
- Interior was remodeled in 2021

ADDRESS:

220 E 22nd St
Fremont, NE

SPACE AVAILABLE:

4,224 SF

LISTING PRICE:

\$695,000

MORE DETAILS



Sam Heineman

sheineman@dodgecountyrealtygroup.com

C: (402) 880-4864



WWW.DODGECOUNTYREALTYGROUP.COM