

For Lease

167 WEST FLEX BUILDING

Flexible uses and flexible sizes

1725 NW 167TH PL, BEAVERTON, OR

TENANT NAME



Flexible sizes from ±10,700 SF with 4,050 SF warehouse/production area to ±19,390 SF with ±7,150 SF warehouse/production area.

TOTAL BUILDING SF	30,718 SF
RENOVATIONS	Major landscaping upgrade and other cosmetic upgrades underway
HVAC	Fully climate controlled
LIGHTING	Abundant natural light with windows on all four sides of building
PARKING RATIO	4/1,000
LOADING	Dock and grade doors

30,718 SF

AVAILABLE

CALL

FOR RENTAL RATE

PROPERTY HIGHLIGHTS

Flexible office layout including large open spaces with some private offices on perimeter

Multiple conference rooms of varying sizes

6 total employee and visitor restrooms including 4 shower facilities for employees

Two separate recently updated break rooms with windows and access to exterior areas



PROPERTY HIGHLIGHTS

Covered dock/grade loading area behind for covered eating area or loading if required

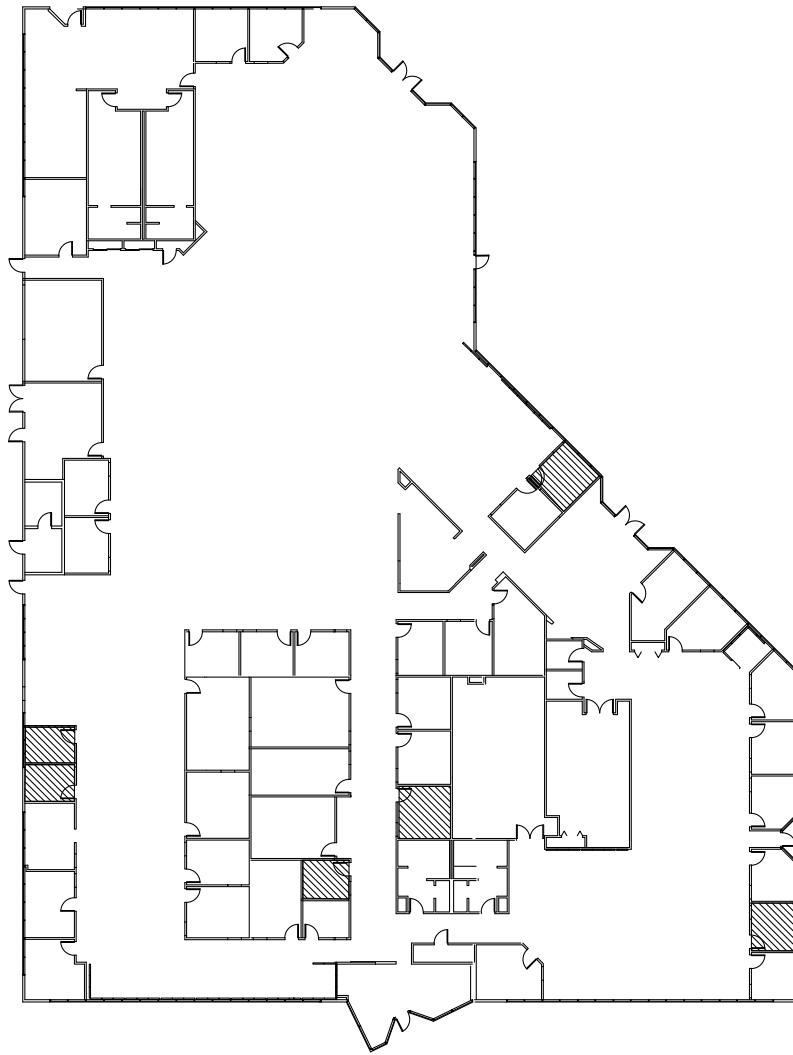
Parking surrounding 3 sides of building with employee entrances surrounding building

Park-like setting with large courtyard adjacent to building

Full landscape renovation underway



FLOOR PLAN



30,718 SF

AVAILABLE

CALL

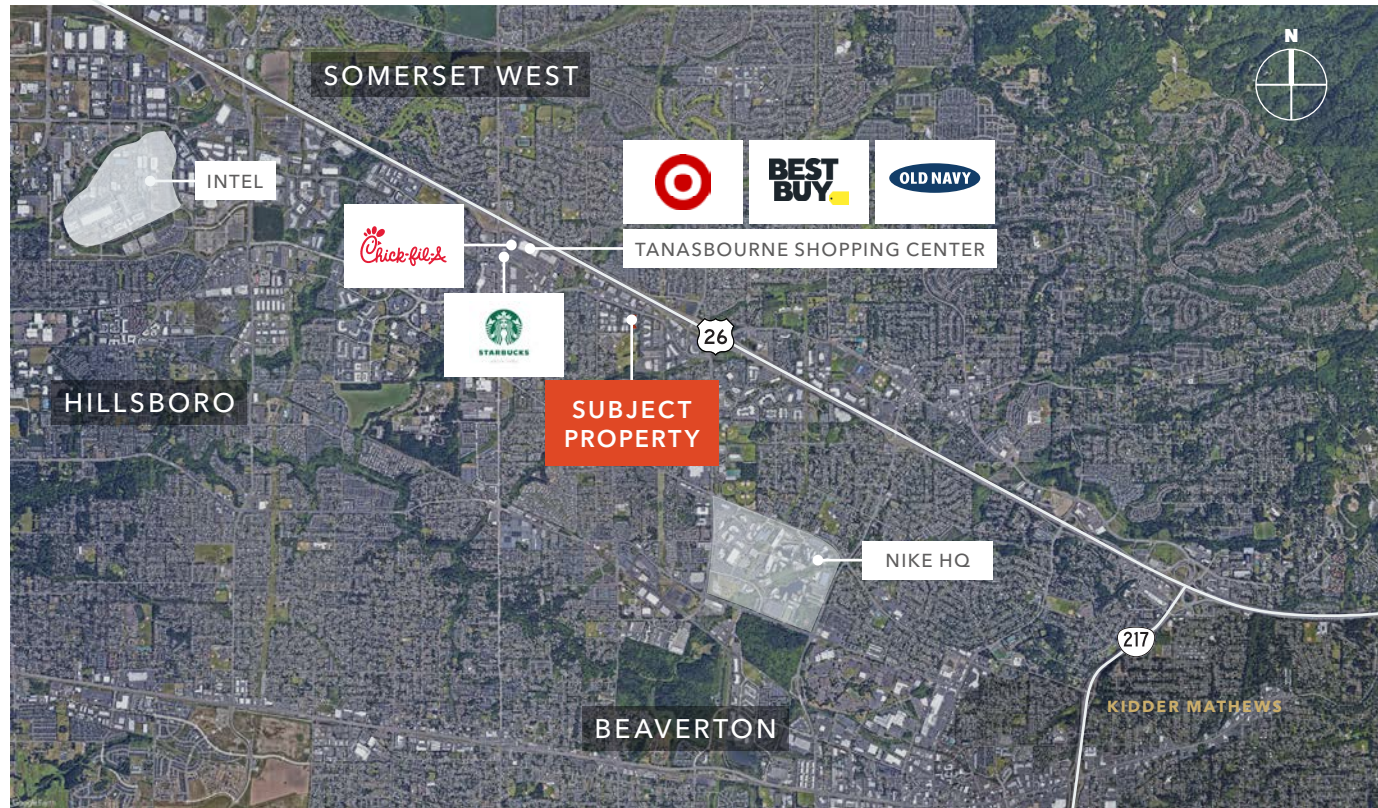
FOR RENTAL RATE

HIGHLY- ACCESSIBLE LOCATION

Located in Beaverton near Nike World Headquarters, just off HWY 26

Easy to find project at signalized intersection of NW Cornell Road and NW 167th Place with great street presence exposure

Easy access to HWY 26



167 WEST FLEX BUILDING

Exclusively listed by

STEVEN KLEIN
503.221.2260
steven.klein@kidder.com

PETER STALICK
503.221.2272
peter.stalick@kidder.com

BRENDAN MURPHY
503.804.9284
brendan.murphy@kidder.com

KIDDER.COM

This information supplied herein is from sources we deem reliable. It is provided without any representation, warranty, or guarantee, expressed or implied as to its accuracy. Prospective Buyer or Tenant should conduct an independent investigation and verification of all matters deemed to be material, including, but not limited to, statements of income and expenses. Consult your attorney, accountant, or other professional advisor.

