



Building owned and managed by  
**HEALTHCARE REALTY**



**500  
E MAIN  
STREET**



**Medical Office Space for Lease**

# Welcome to 500 E MAIN STREET



55,844 SF



3 floors



Move-in ready medical suites



Walkable amenities



Newly renovated lobby



Covered patient drop-off



Ample on-site parking



Near Nationwide Children's Hospital  
Main Campus and OhioHealth Grant  
Medical Center



In the heart of downtown with  
convenient highway access



Professional management and  
architectural space planning



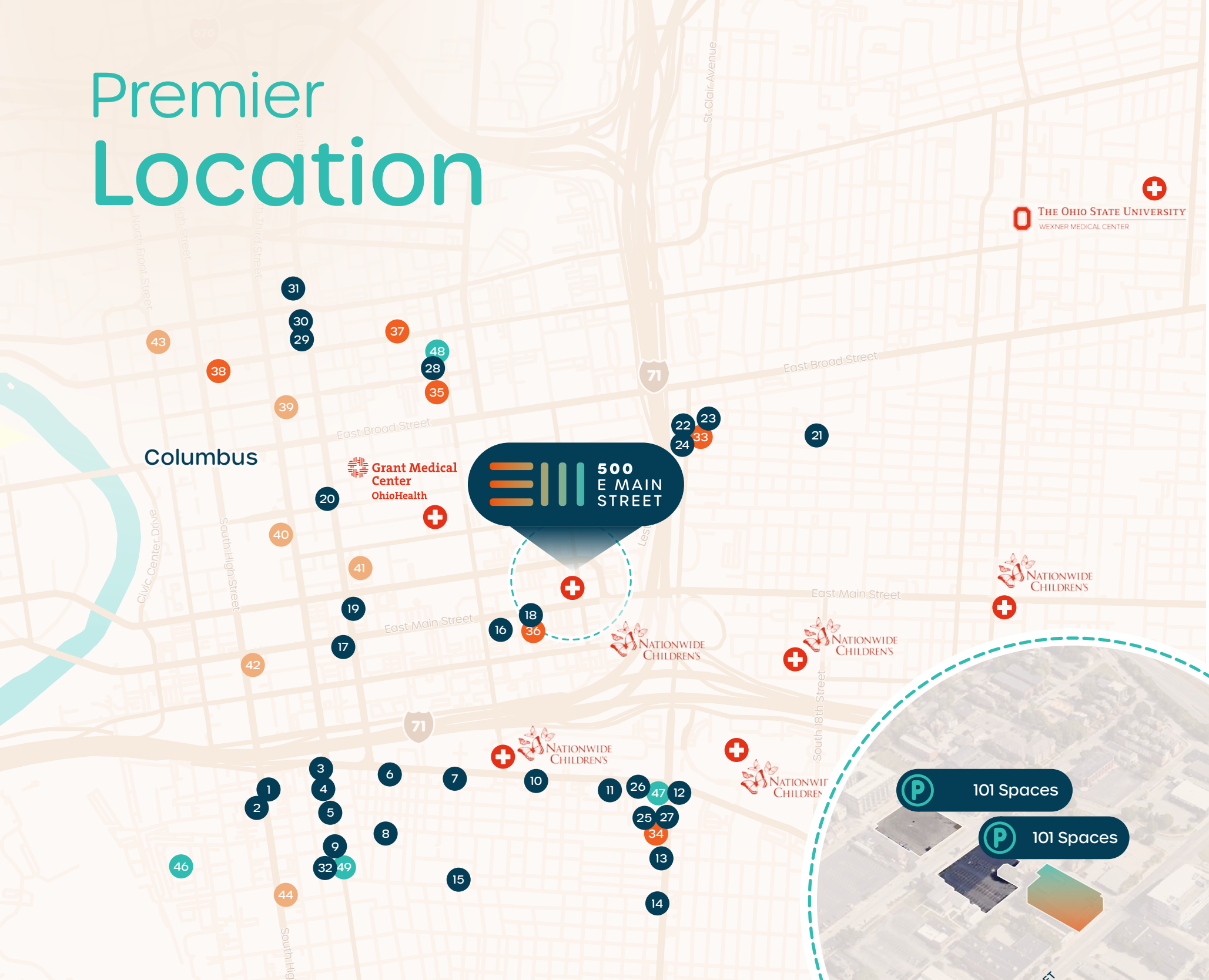
Market leading TI packages

500 E Main Street  
Building owned and managed by  
**HEALTHCARE REALTY**

**Leasing Information:**  
Andy Dutcher  
+1 614 460 4403  
andrew.dutcher@jll.com  
Joey Lamb  
+1 614 460 4412  
joeylamb@jll.com



# Premier Location



## DINING

1. First Watch
2. Arepazo Tapas Bar Grille
3. Katzinger's Delicatessen
4. Kittie's Cakes
5. Pistacia Vera
6. Club 185
7. Bendi Wok n' Bar
8. Lindey's
9. Cento
10. Starbucks
11. Tim Hortons
12. Panera Bread
13. Parsons North Brewing Company
14. Plank's Cafe & Pizzeria
15. Sycamore
16. McDonald's
17. The Walrus
18. Indian Oven
19. Dirty Frank's Hot Dog Palace
20. 4th & State
21. The Olde Towne Tavern
22. HangOverEasy
23. Gemüt Biergarten
24. Upper Cup Coffee
25. Alchemy Café
26. Simply Honest Cafe
27. The Mercury Diner
28. Matt and Tony's Kitchen x Tavern

29. Pins Mechanical Co
30. Jackie O's On Fourth
31. Wolf's Ridge Brewing
32. Stauf's Coffee Roasters

## FITNESS

33. Olde Towne Fitness
34. The Fitness Loft Columbus
35. Shape Fitness 24hrs
36. Resolve Fitness
37. Beyond Limits Training
38. The Pro's Gym

## GROCERY & RETAIL

39. Kroger
40. CVS
41. The Hills Market Downtown
42. The Book Loft of German Villag

## LODGING

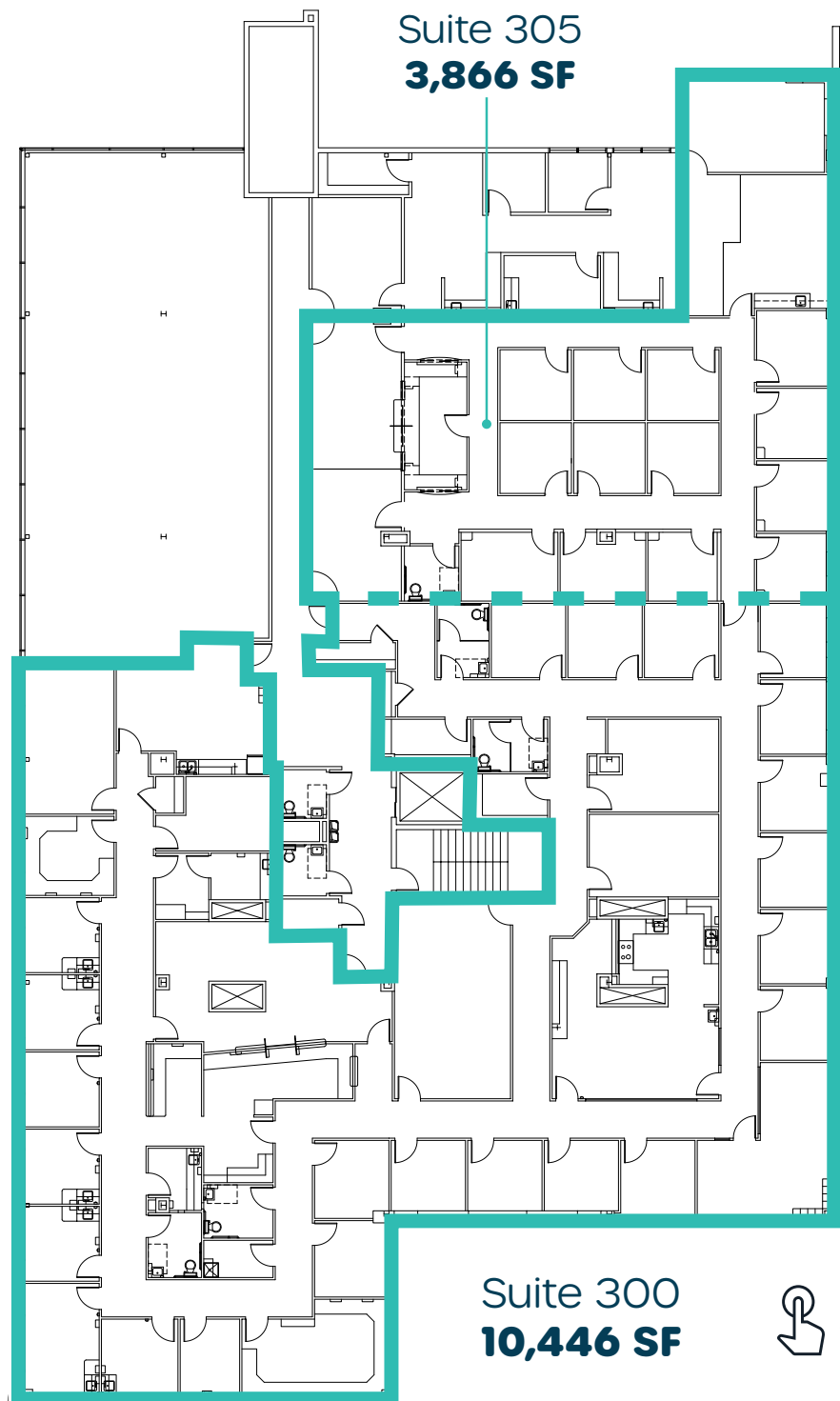
43. Renaissance Columbus Downtown Hotel
44. The Plaza Hotel Columbus at Capitol Square
45. Holiday Inn Columbus Dwtm-Capitol Square, an IHG Hotel
46. The Westin Great Southern Columbus
47. Courtyard Columbus Downtown
48. Holiday Inn Express Columbus Downtown, an IHG Hotel



**500 E Main Street**  
 Building owned and managed by  
**HEALTHCARE REALTY**

**Leasing Information:**  
 Andy Dutcher +1 614 460 4403  
 andrew.dutcher@jll.com  
 Joey Lamb +1 614 460 4412  
 joeylamb@jll.com

# Third Floor



Suite 305  
**3,866 SF**

Suite 300 + Suite 305  
**14,312 SF contiguous**

Suite 300  
**10,446 SF**

 Virtual Walkthrough

500 E Main Street  
Building owned and managed by  
**HEALTHCARE REALTY**

**Leasing Information:**

Andy Dutcher +1 614 460 4403 andrew.dutcher@jll.com	Joey Lamb +1 614 460 4412 joeylamb@jll.com
---	--

 **500  
E MAIN  
STREET**

**Andy Dutcher**

D +1 614 460 4403  
M +1 614 425 2959  
andrew.dutcher@jll.com

**Joey Lamb**

D +1 614 460 4412  
M +1 614 506 9147  
joey.lamb@jll.com

 **JLL** | Building owned and managed by  
**HEALTHCARE REALTY**

Although information has been obtained from sources deemed reliable, JLL does not make any guarantees, warranties or representations, express or implied, as to the completeness or accuracy as to the information contained herein. Any projections, opinions, assumptions or estimates used are for example only. There may be differences between projected and actual results, and those differences may be material. JLL does not accept any liability for any loss or damage suffered by any party resulting from reliance on this information. If the recipient of this information has signed a confidentiality agreement with JLL regarding this matter, this information is subject to the terms of that agreement. ©2024 Jones Lang LaSalle Brokerage, Inc. All rights reserved.