

The background of the advertisement is a photograph of a large, modern office building. The building has a brown facade with several vertical stone pillars. A sign above the entrance reads "BIO" in purple and yellow letters. The building is surrounded by a parking lot with several cars and some trees. A road sign for "2410 GALPIN CT" is visible in the foreground.

# Office Space Available For Lease

2410 Galpin Court  
Chanhassen, MN 55317

**Brad Bohlman, SIOB**  
Senior Vice President  
+1 952 897 7733  
[brad.bohlman@colliers.com](mailto:brad.bohlman@colliers.com)



## Building Specifications

### Property Address

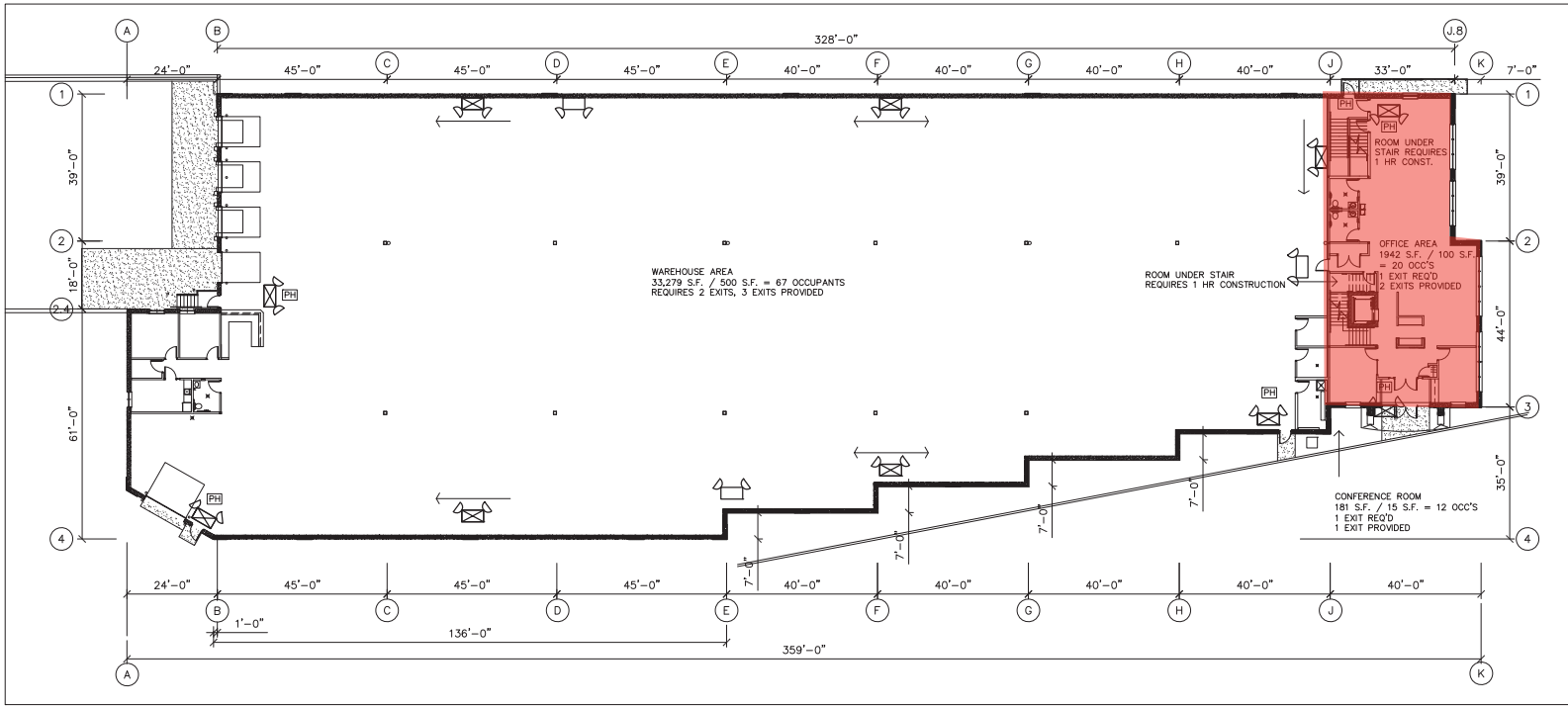
2410 Galpin Court, Chanhassen

### Office Summary

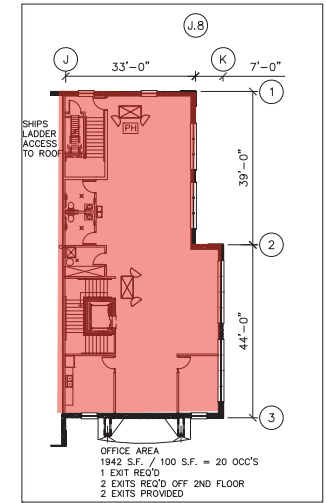
- 6,640 SF on two floors
- Fully furnished
- Restrooms on both floors
- Main floor conference room
- Elevator
- Executive office on each floor
- Storage space on each floor
- Large employee breakroom
- Cubicles provided to accommodate up to 50 employees
- Freshly painted
- Security card access to the building
- Available now

### Lease Rate

**\$14.00 PSF Gross - Utilities included**



**1** MAIN FLOOR — CODE PLAN  
NO SCALE



**2** 2ND FLOOR — CODE PLAN  
NO SCALE



An aerial photograph of a large commercial building complex. The main building has a white roof and a brick facade. A red callout box with the word "Site" in white text points to a specific entrance area of the building. The complex is surrounded by parking lots filled with cars and is bordered by Galpin Blvd and Galpin Court. The surrounding area includes residential houses and trees.

Colliers

1600 Utica Ave S, Suite 300  
St. Louis Park, MN 55416  
P: +1 952 897 7700  
colliers.com

This document has been prepared by Colliers International for advertising and general information only. Colliers International makes no guarantees, representations or warranties of any kind, expressed or implied, regarding the information including, but not limited to, warranties of content, accuracy and reliability. Any interested party should undertake their own inquiries as to the accuracy of the information. Colliers International excludes unequivocally all inferred or implied terms, conditions and warranties arising out of this document and excludes all liability for loss and damages arising there from. This publication is the copyrighted property of Colliers International and/or its licensor(s). ©2023. All rights reserved.

**Brad Bohlman, sior**  
Senior Vice President  
+1 952 897 7733  
brad.bohlman@colliers.com