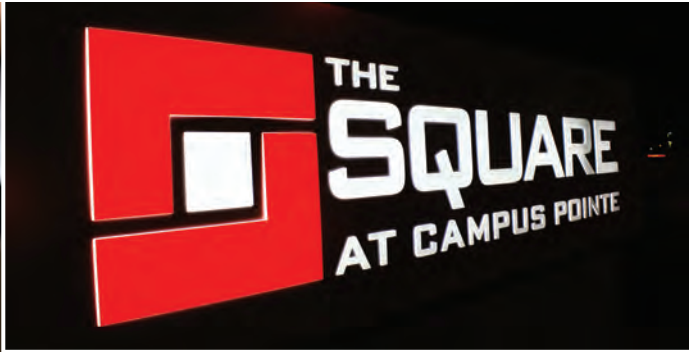


THE INTERSECTION OF LIFE AND LEARNING



SHOP

WORK

PLAY

LIVE

CONNECT

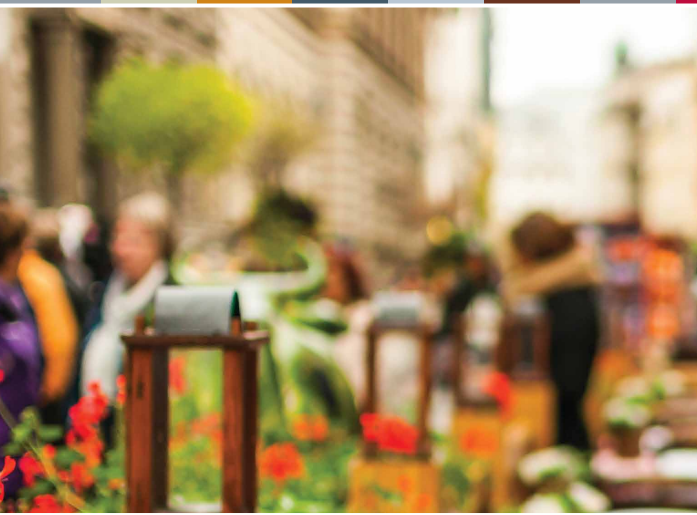
MEET





Learn & Live

Thrive & Play



Campus Pointe is one of California's fastest-growing lifestyle destinations for shopping, dining and residential living. Located on the campus of Fresno State, Campus Pointe is a hallmark project that brings together education and entertainment into a vibrant and active destination venue. This innovative public-private-partnership has resulted in a thriving mixed use development that is attracting a diverse demographic from the campus and surrounding community.



CAMPUS  POINTE

A 45 acre mixed use project on the campus of Fresno State.

The Square



175,000 sf. Retail/Restaurants
57 Unit Studio Apartments
51,500 sf. Fresno Dream Center
for Foster Youth



Student Housing

928 Beds. Complete

Workforce Housing

144 Units. Complete



Active Living

142 Units. Complete



Hotel

138 Rooms. Permitting/Bidding

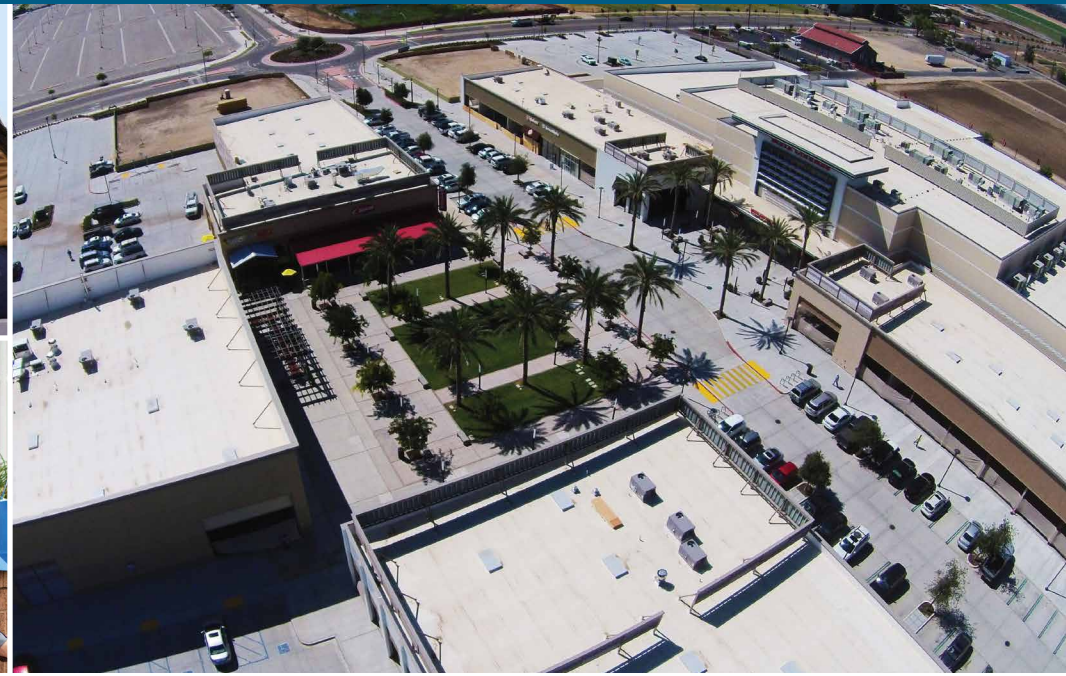


Office Space

60,000 sf. Proposed

THE INTERSECTION OF LIFE AND LEARNING

THE INTERSECTION OF LIFE AND LEARNING – AT FRESNO STATE



The Square at Campus Pointe is at the center of life and learning located on the Fresno State campus directly across the street from the nationally ranked Save Mart Center. The Square at Campus Pointe is a vibrant hub of highly desirable shopping and dining options. Campus Pointe is a pedestrian-focused development that offers theatre, retail and dining options for the campus and surrounding Central Valley community.

Surrounding Population

- 2 mile apartment units & corresponding population
- 13,424 units or 20,135 people
- 2 mile housing units & corresponding population
- 13,701 units or 35,622 people



- 175,000 square feet of Retail & Restaurants
- 57 Unit Studio Apartments
- 51,500 square feet for Fresno Dream Center for Foster Youth



25,000 +
campus
community



Common
area Wi-Fi

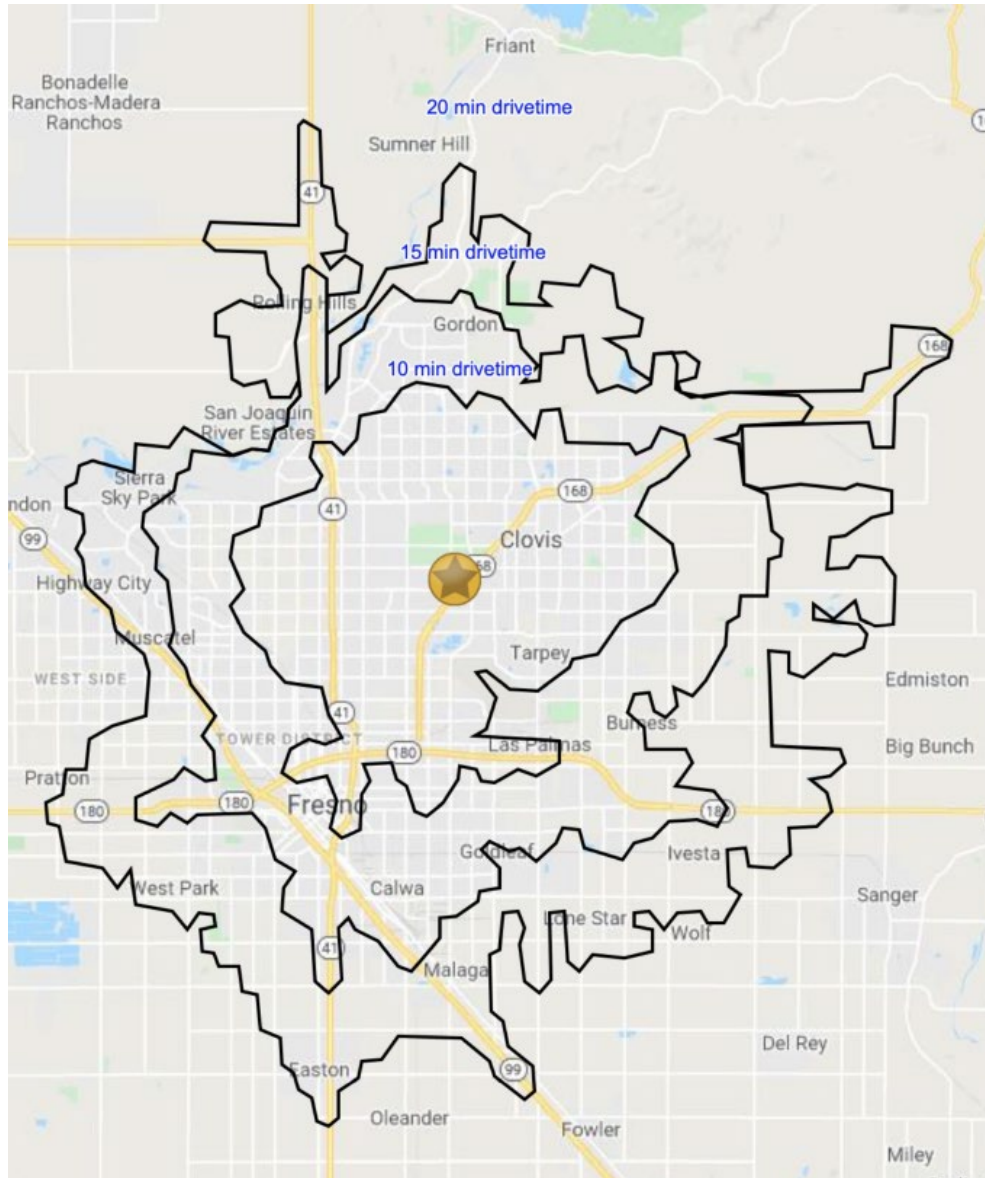


Leasing Representative
Eric Peterson
559.437.4814
Cell: 559.930.2013
epeterson@lance-kashian.com

THE INTERSECTION OF LIFE AND LEARNING – AT FRESNO STATE



THE INTERSECTION OF LIFE AND LEARNING – AT FRESNO STATE



Population

10 min	15 min	20 min
331,620	588,245	677,329



Households

10 min	15 min	20 min
117,124	200,896	229,945



Average Household Income

10 min	15 min	20 min
\$72,059	\$75,116	\$75,530

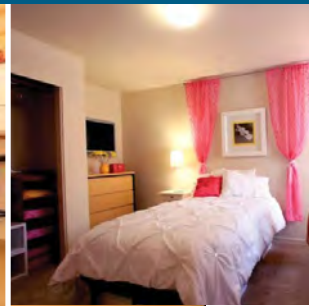
DATA SOURCE: APPLIED GEOGRAPHIC SOLUTIONS 10/2019, TIGER GEOGRAPHY



Leasing Representative

Eric Peterson
 559.437.4814
 Cell: 559.930.2013
epeterson@lance-kashian.com

THE INTERSECTION OF LIFE AND LEARNING – AT FRESNO STATE



Palmilla is adjacent to the Save Mart Center where Hwy 168 meets Shaw Avenue. Our community offers upscale amenities and conveniences including central heating and air conditioning, ceiling fans, large walk-in closets, a stackable washer and dryer, dishwashers and microwaves, and private, covered patios and balconies. Luxury resort style amenities include a fully equipped fitness center, and a beautiful swimming pool and whirlpool spa. Palmilla is close to amazing shopping, fine restaurants and abundant entertainment.

Palazzo at Campus Pointe offers off-campus housing for students to live an independent lifestyle near to all the conveniences of Fresno State — not to mention the shops, restaurants and entertainment options. We have a variety of spacious floor plans with private accommodations and all the luxuries and modern conveniences. Take advantage of our unmatched resort-style amenities and enjoy the privacy of your spacious college suite.



On-site gym



Swimming pool & whirlpool spa



State-of-the-art
Movie Theatre



Fully furnished
suites



Stackable
washer & dryer



Location 168 & Shaw



The Square at
Campus Pointe
just steps away



Basketball &
racquetball courts



Palmilla – Apartment Homes
5082 Primitivo Way, Fresno, CA 93710
559-291-4000
palmilla@rpmcompany • palmillafresno.com



Palazzo at Campus Pointe
5164 N. Primitivo Way, Fresno, CA 93710
855-559-3021
palazzo@rpmcompany.net • palazzofresno.com

THE INTERSECTION OF LIFE AND LEARNING – AT FRESNO STATE



Seniors who wish to live at the intersection of life and learning are invited to experience Senior Living at Campus Pointe! Lifelong learners will enjoy this vibrant, independent living community, filled with energy and fun activities both within the community and just steps away from The Square at Campus Pointe. From spacious studios to one-and two-bedroom apartments, Senior Living at Campus Pointe offers residents the opportunity to live right in the heart of the active Campus Pointe community. Those who enjoy carefree living will enjoy all the great amenities.



142 stylish senior residential units



Just steps away from The Square, features over 20 dining and shopping establishments

Amenities:



Adjacent to the award-winning Save Mart Center, which attracts 500,000+ people annually



Gym & fitness center



Library



Swimming pool



Weekly housekeeping



Pets welcome

THE INTERSECTION OF LIFE AND LEARNING – AT FRESNO STATE



A stylish and innovative Hotel is proposed exclusively for Fresno State. The hotel, once complete will be conveniently located at the interchange of Highway 168 and Shaw Avenue, directly across from the renowned Save Mart Center at Campus Pointe. The proposed hotel location will have all of the amenities you've come to enjoy when staying at a contemporary hotel. Its ideal location just steps away from Campus Pointe's shops, restaurants and entertainment makes this location the perfect place to stay for business travelers, families and friends of the Fresno State community!



138 spacious guest rooms



24/7 snacks and entrees available



Free high-speed Wi-Fi and remote printing access



Just steps away from Campus Pointe's shops and restaurants



Location 168 & Shaw exit and adjacent to the campus of California State University, Fresno

THE INTERSECTION OF LIFE AND LEARNING – AT FRESNO STATE



The Commercial Center at Campus Pointe is located in the heart of the Valley's premier entertainment, shopping and dining hub. With its highly visible location immediately off of the Highway 168 exit, The Commercial Center provides incredibly easy access to Valley residents.



60,000 square feet of space



Pedestrian friendly



Adjacent to the nationally ranked Save Mart Center, which attracts 500,000+ patrons annually



Highway 168 & Shaw exit

Amenities:



Wireless internet throughout



Spacious multi-use media center & conference room



Private restrooms



Convenient location next to the Fresno State campus



Parking spots for employees

Leasing Representative

Eric Peterson
559.437.4814 • Cell: 559.930.2013
epeterson@lance-kashian.com

THE INTERSECTION OF LIFE AND LEARNING – AT FRESNO STATE

FRESNO STATE

Discovery. Diversity. Distinction.

Total Student Headcount

	Number	Percent
Total Students	23,929	
Undergraduate	21,279	88.9%
Graduate/Postbaccalaureate	2,650	11.1%

Employees

	Number	Percent
Total Number	2,463	
Faculty	1,531	62.2%
Staff	783	31.8%
Managers	149	6.0%



THE INTERSECTION OF LIFE AND LEARNING – AT FRESNO STATE



- In 2022, Save Mart Center ranked in the Top 100 POLLSTAR!
- Ranked #54 in the POLLSTAR US and #75 in the POLLSTAR WORLDWIDE!
- Save Mart Center has welcomed over 7 million guests since its opening in November 2003.
- More than 3,000 events have been hosted at Save Market Center since its opening in 2003.

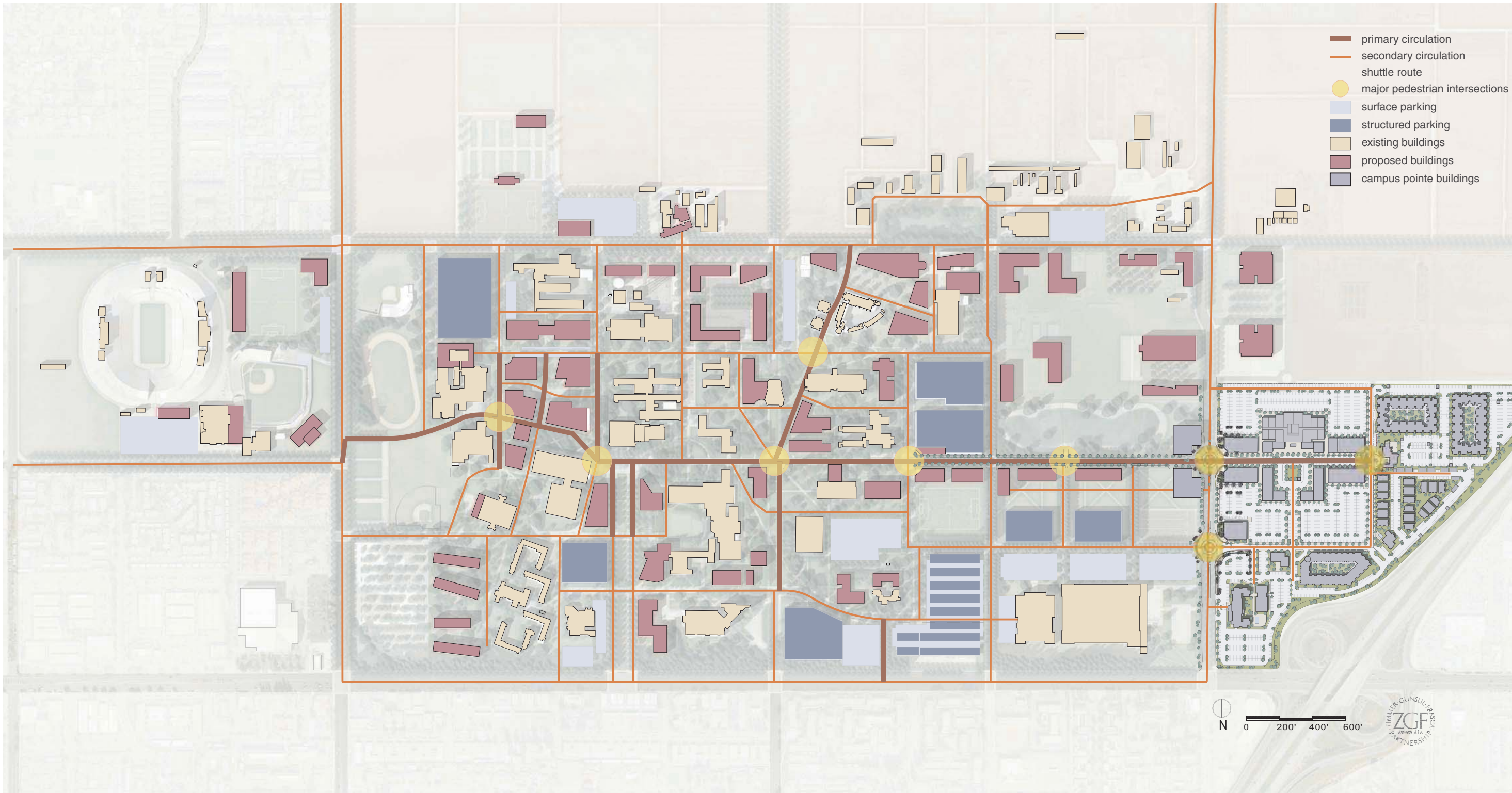


Top 100
Save Mart Center ranked
among the top event centers
in the World.

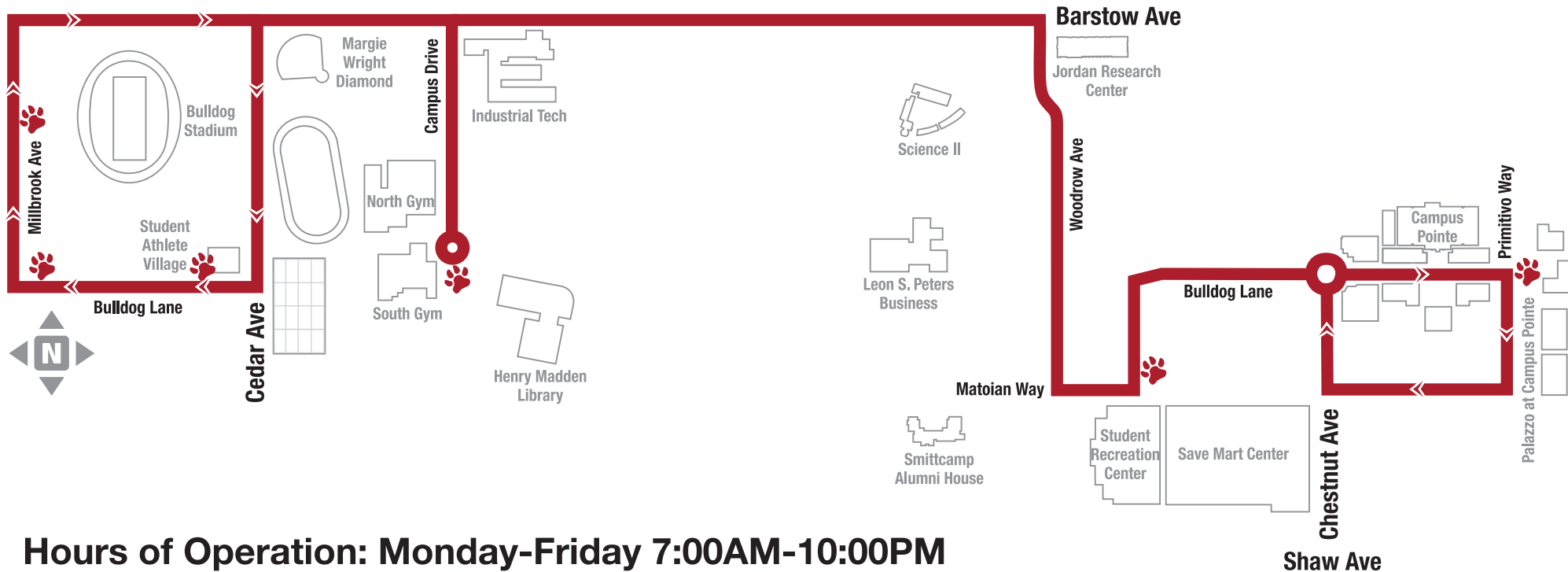
www.savemartcenter.com



DRAFT: PROPOSED PEDESTRIAN CIRCULATION
SOURCE: ZGF ARCHITECTS, PORTLAND, OREGON



Bulldog Express

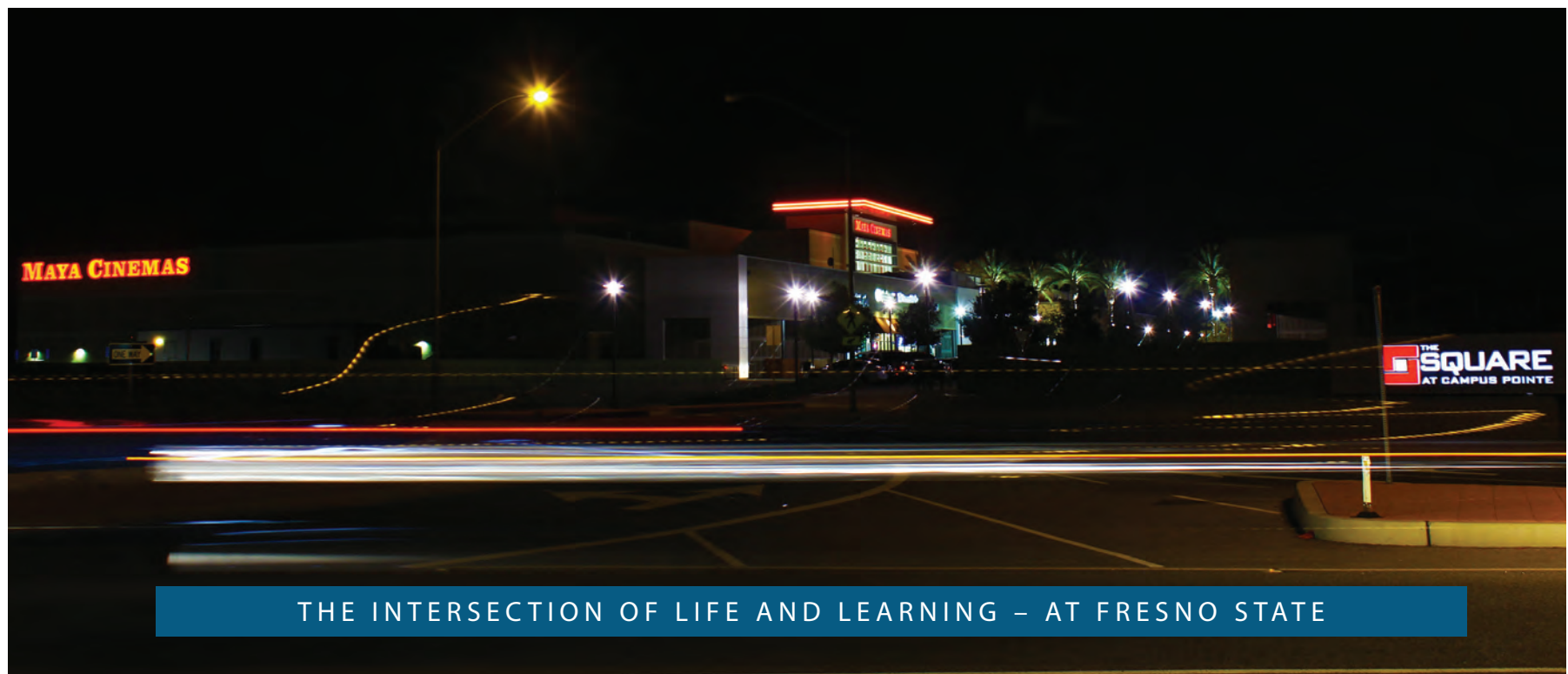


Hours of Operation: Monday-Friday 7:00AM-10:00PM

Shuttle will arrive at each stop approximately every 15 minutes.

The first and last hour of arrival times are listed below.

STOP NAME	FIRST HOUR OF SERVICE				LAST HOUR OF SERVICE			
Student Athlete Village		7:14AM	7:29AM	7:44AM	8:59PM	9:14PM	9:29PM	9:44PM
Bulldog Lane and Millbrook	7:00AM	7:15AM	7:30AM	7:45AM	9:00PM	9:15PM	9:30PM	9:45PM
Millbrook and Barstow	7:03AM	7:18AM	7:33AM	7:48AM	9:03PM	9:18PM	9:33PM	9:48PM
Campus Dr Loop – Eastbound	7:07AM	7:22AM	7:37AM	7:52AM	9:07PM	9:22PM	9:37PM	9:52PM
Save Mart Center – Eastbound	7:12AM	7:27AM	7:42AM	7:57AM	9:12PM	9:27PM	9:42PM	9:57PM
Campus Pointe	7:15AM	7:30AM	7:45AM	8:00AM	9:15PM	9:30PM	9:45PM	10:00PM
Save Mart Center – Westbound	7:18AM	7:33AM	7:48AM	8:03AM	9:18PM	9:33PM	9:48PM	
Campus Drive Loop – Westbound	7:22AM	7:37AM	7:52AM	8:07AM	9:22PM	9:37PM	9:52PM	



THE INTERSECTION OF LIFE AND LEARNING - AT FRESNO STATE

CAMPUS POINTE

FOR RETAIL, RESTAURANT & ENTERTAINMENT LEASING INFORMATION, PLEASE CONTACT:

UNIVERSITY CONTACT

Deborah Adishian-Astone
Associate Vice President for Auxiliary Operations/
Executive Director
(559) 278-0800 • debbiea@csufresno.edu

LEASING REPRESENTATIVE

Eric Peterson
Kashian Enterprises
(559) 437-4814 • (559) 930-2013 Mobile
epeterson@lance-kashian.com