

**PLATTE
STREET**

RETAIL PORTFOLIO



2nd Generation Restaurant Space Available

ZANG BUILDING

1537 Platte Street | Denver, CO 80202

SAM ZAITZ

+1 303 931 1201

Sam.Zaitz@jll.com

JEFF FELDMAN

+1 214 564 7188

Jeff.Feldman@jll.com

LILY ARMSTRONG

+1 415 342 6217

Lily.Armstrong@jll.com



ZANG BUILDING

1537 Platte Street | Denver, CO 80202

SUITE C120

3,325 SF

SPACE NOTES

- Corner 2nd generation restaurant space
- Industrial roll-up doors
- Large patio space on Platte Street Plaza
- Service entrance direct access to parking lot ideal for loading
- Exterior building signage visible from I-25

VIRTUAL TOUR



ZANG BUILDING

1537 Platte Street | Denver, CO 80202

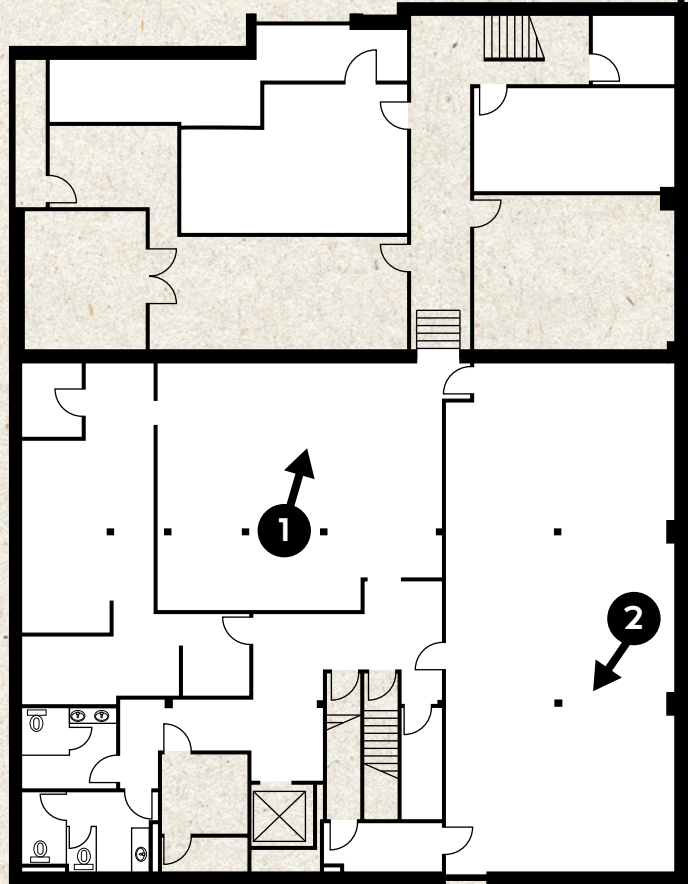
SUITE CB20

5,798 SF

SPACE NOTES

- 2nd generation below-grade restaurant / bar space
- Perfect for speakeasy / lounge
- Restrooms
- Plenty of storage space
- Elevator access

VIRTUAL TOUR





PLATTE STREET

RETAIL PORTFOLIO



SAM ZAITZ
+1 303 931 1201
Sam.Zaitz@jll.com

JEFF FELDMAN
+1 214 564 7188
Jeff.Feldman@jll.com

LILY ARMSTRONG
+1 415 342 6217
Lily.Armstrong@jll.com

