



15894 HIGHWAY 17
P.O. BOX 56
HAMPSTEAD, NC 28443
910/270-5100 FAX: 910/270-5110

FOR LEASE

SMALL OFFICE/WAREHOUSE



**102 OLD EASTWOOD ROAD - SUITE C-2/C-3
WILMINGTON, NORTH CAROLINA**

This 1,120 square foot suite is conveniently located right next to Home Depot off Eastwood Road. The versatile floor plan features private office, a conditioned production room and 9' overhead doors in the rear. The suite can be subdivided into 560 square foot suites.

**CALL
LAURENCE NADEAU
(910) 515-3622**

Commercial & Investment Real Estate Specialists

email: info@creativecommercial.biz
www.creativecommercial.biz



102 OLD EASTWOOD ROAD - SUITE C-2/C-3

THE AREA

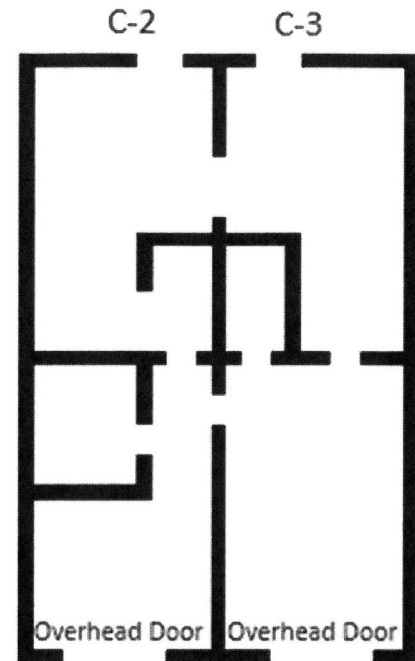
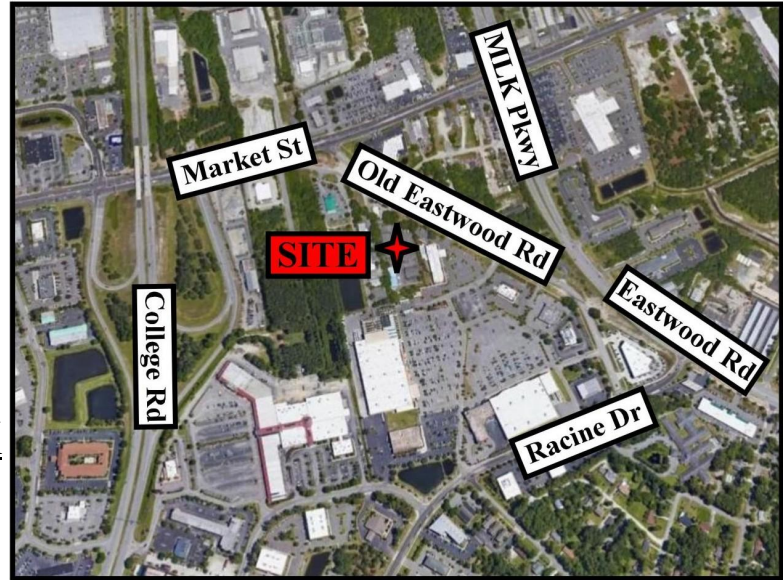
- Close To Intersection Of Market Street/MLK And Market Street/South College Road
- Zoned Regional Business (RB) Allowing Many Commercial Uses
- Municipal Water/Sewer

OLD EASTWOOD BUSINESS PARK

- Bylaws And Covenants/Restrictions Recorded In New Hanover County Condo Book 1308, Page 1322
- All Property Owners Association Dues Paid By Landlord And Include Building Insurance, Roof Maintenance, Landscaping And Trash Removal
- Professionally Managed By CEPCO

THE SUITE

- 1,120 Square Feet
- 9' Overhead Doors
- One Restroom
- Can Be Subdivided Into 560 Square Foot Suites



THE OFFERING

\$2,200/Mo

CREATIVE COMMERCIAL PROPERTIES, INC.

CALL

LAURENCE NADEAU

(910) 515-3622

Email: laurence@creativecommercial.biz

www.creativecommercial.biz



Creative Commercial Properties, Inc. reasonably believes the information in this brochure is fairly and accurately stated. However, any prospective purchaser is urged to independently confirm its accuracy and completeness.