



KEY FEATURES

- ±14,820 SF
- ±1.86 Acre Site
- 71 Parking Spaces
- Existing Drive-Thru
- Monument Sign (Electric Reader)
- Zoning: C-2 (General Commercial)
- Master Lease through 7/31/32

RETAIL - DEVELOPMENT SITE

SUBLEASE - \$12.50 PSF MG

WALGREENS MABLETON, GA

5000 Floyd Rd SW, Mableton, GA 30126

Excellent sublease opportunity of a former Walgreens location in Mableton, GA. This ±14,820 SF building sits on a ±1.86 acres on the NW Corner of Floyd Rd SW and Nickajack Rd SW

LEARN MORE ABOUT THIS PROPERTY

STEVE VALLOS

steve@commercialrealtync.com
 336.793.0890, ext 105

	1 MILE	2 MILES	3 MILES
POPULATION	6,708	24,792	62,999
HOUSEHOLDS	2,519	9,431	23,402
AVERAGE HH INCOME	\$111,620	\$110,250	\$106,274

ALL OFFERS SUBJECT TO WALGREENS REAL ESTATE COMMITTEE APPROVAL



WALGREENS - MABLETON, GA

LOCATION

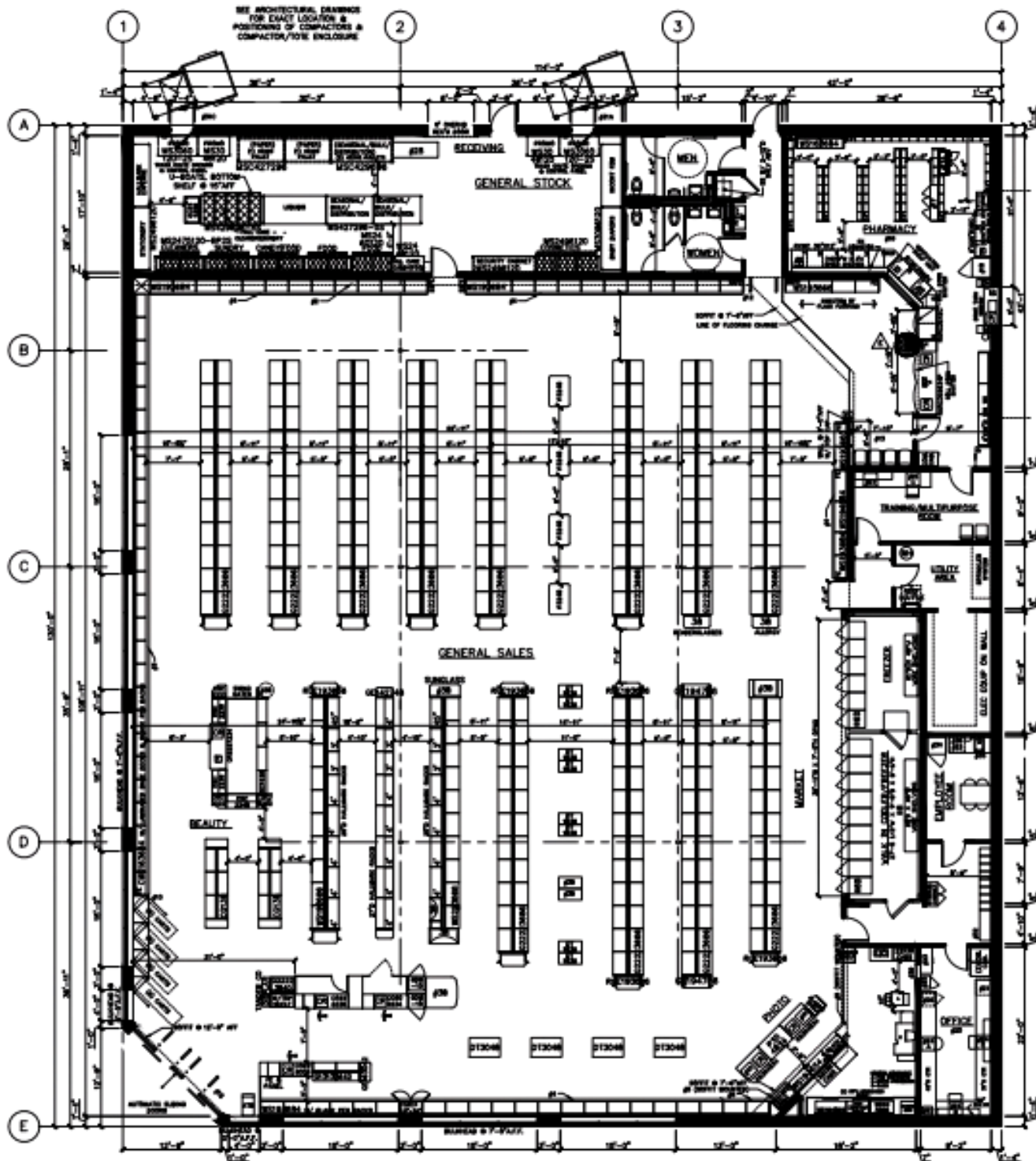
Address	5000 Floyd Rd SW	City	Mableton
State	GA	Zip	30126
		County	Cobb

PROPERTY DETAILS

Property Type	Retail	Acres ±	1.86	Avail SF ±	14,820
Year Built	2008				

PRICING & TERMS

Sublease Rate	\$12.50 PSF MG
----------------------	----------------

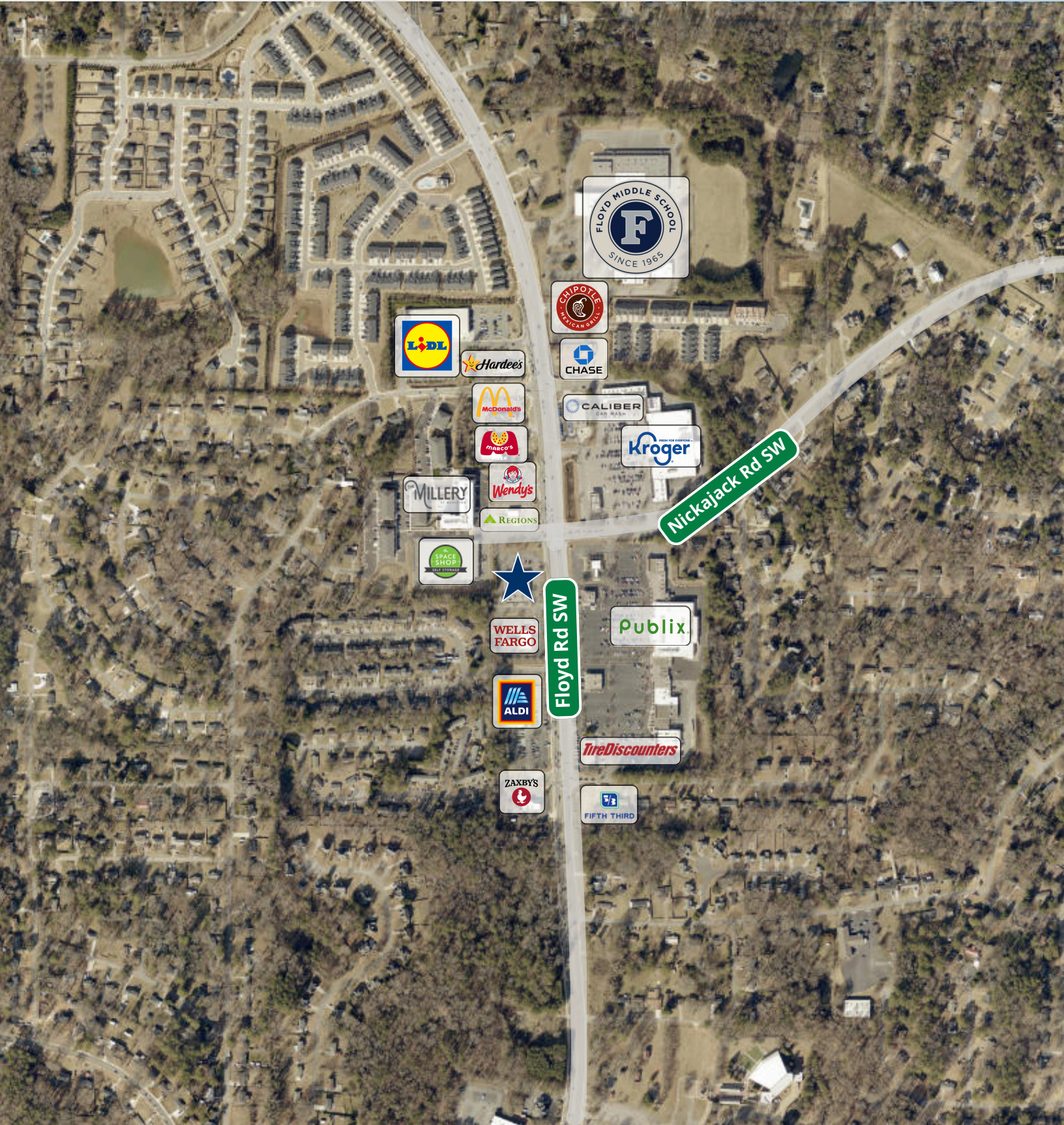


FF&E Floor Plan

All Fixtures and Equipment have been removed.

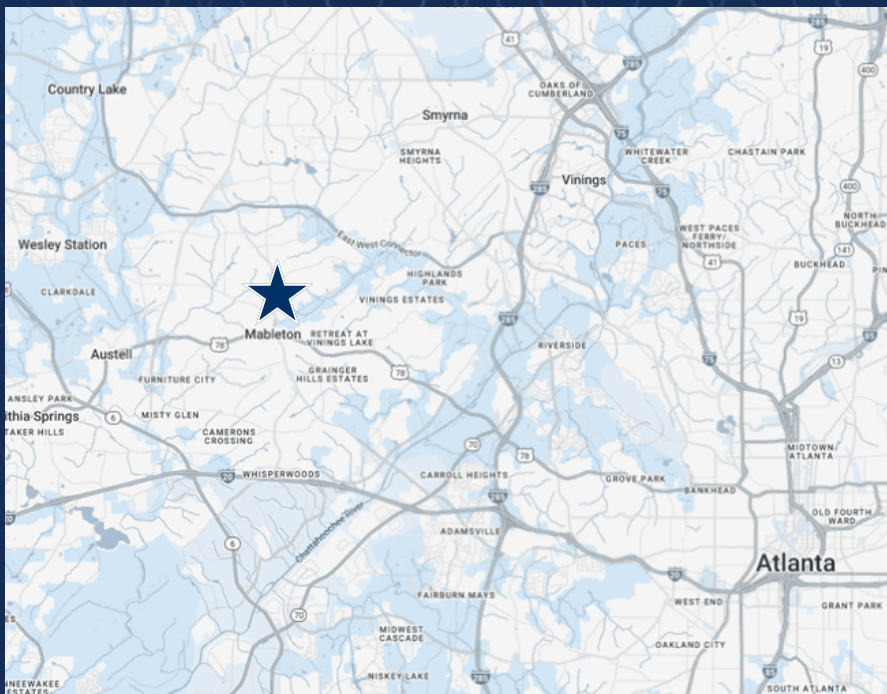
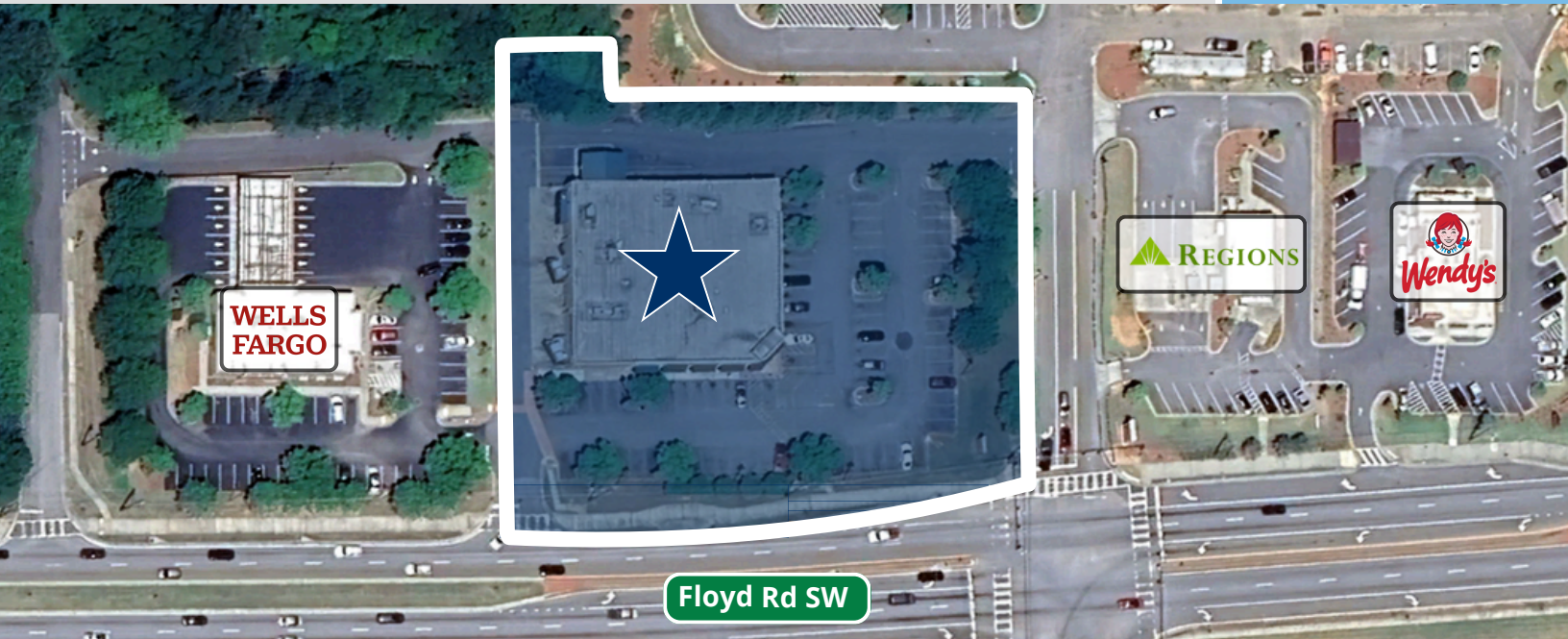
RETAIL - DEVELOPMENT SITE

SUBLEASE - \$12.50 PSF MG



RETAIL - DEVELOPMENT SITE

SUBLEASE - \$12.50 PSF MG



LOCATION FEATURES

- AADT: Floyd Rd SW (±33,779)
- 1 Mile from HWY 78
- 6.5 Miles from I-285