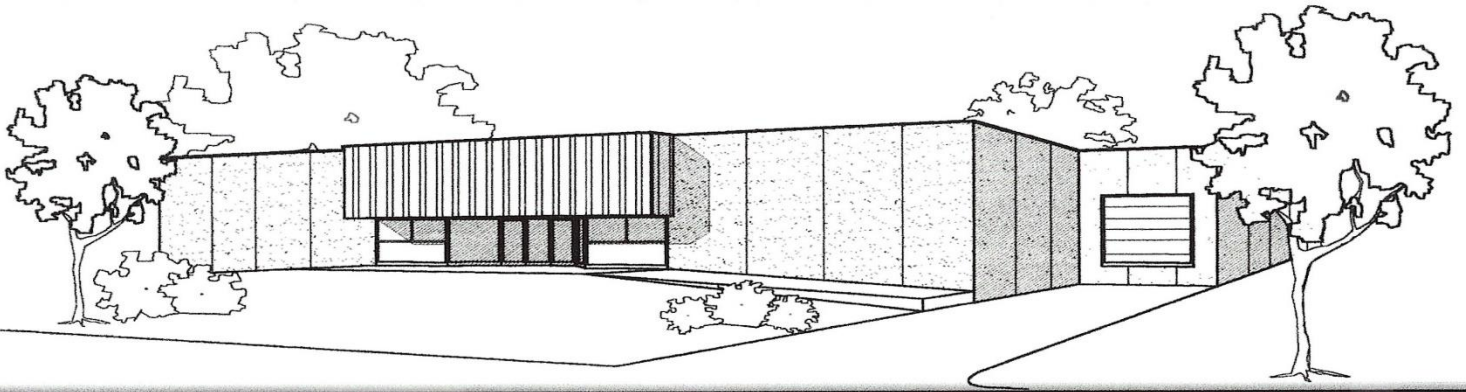


FOR LEASE

(12,872 SQ. FT.)



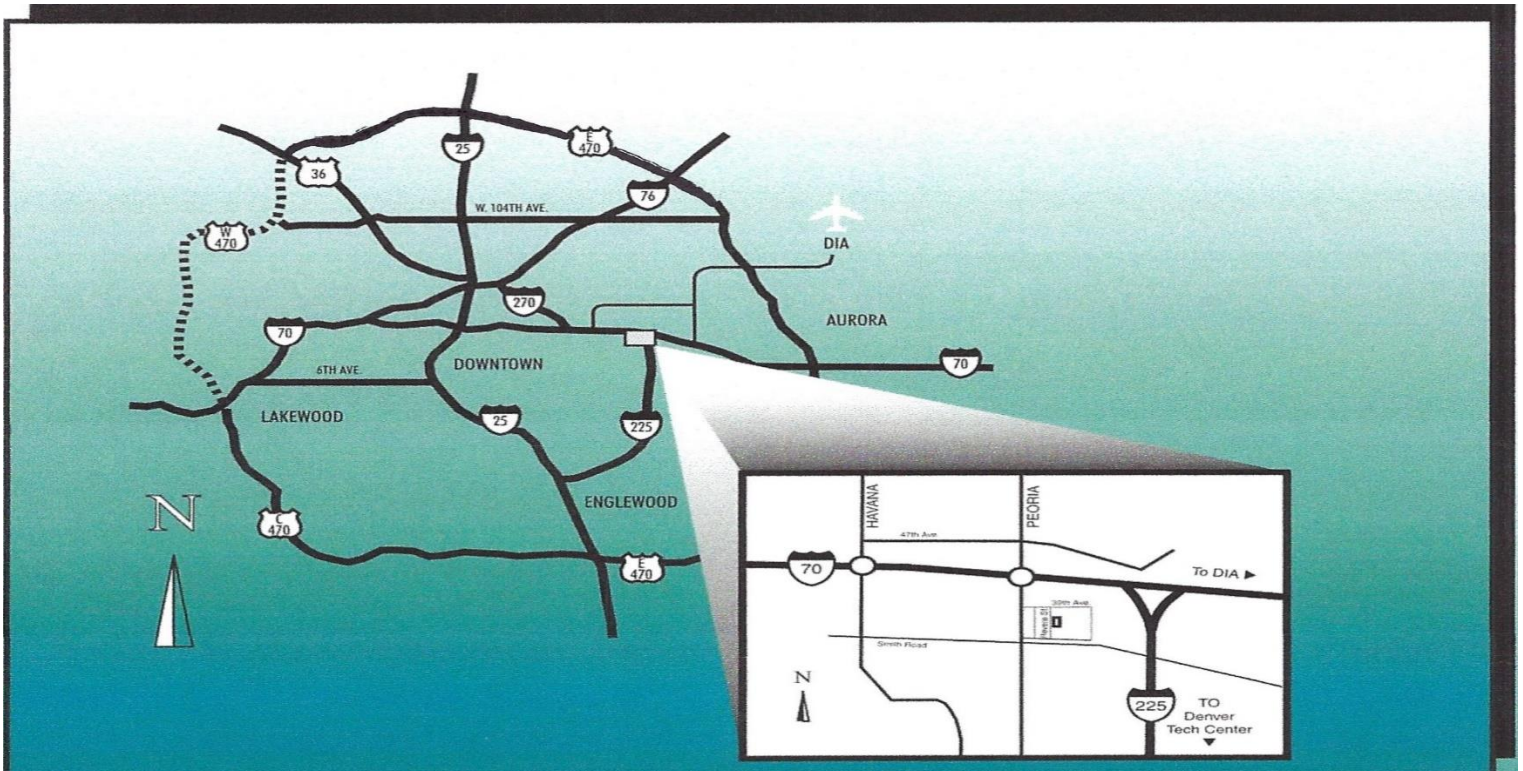
Office / Warehouse Building

3710 Revere Street, Denver, Colorado

FOR MORE INFORMATION:

FALL RIVER INVESTMENTS, INC. ♦ 7700 E. ILIFF AVENUE, SUITE F ♦ DENVER, CO 80231 ♦ (303) 752-2051

- EASY ACCESS TO I-70 & I-225
- LOCATED IN NORTHEAST DENVER
- CORNER LOT
- DOCK HIGH AND GROUND LEVEL DOORS
- INSULATED WALLS & CEILINGS
- SKYLIGHTS
- A/C OFFICES
- ATTRACTIVE LANDSCAPING
- 16' CLEAR CEILING HEIGHT



Floor Plan on Reverse Side

