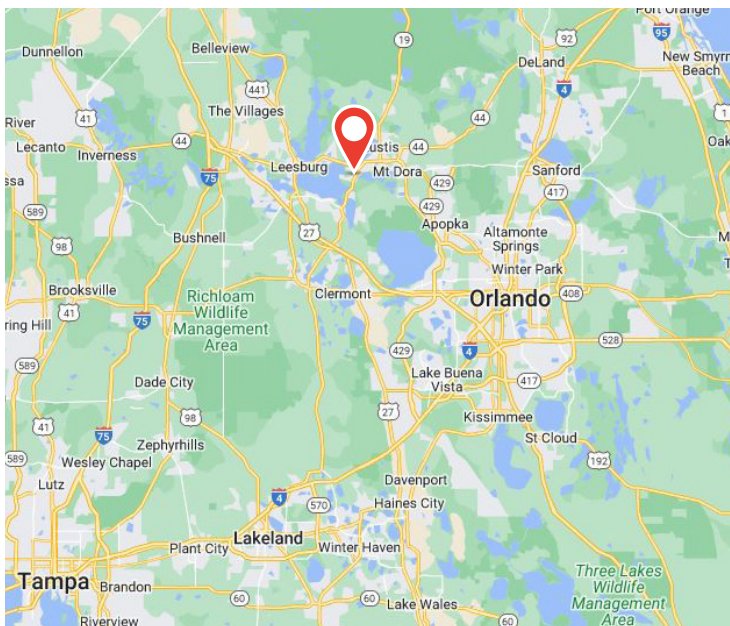


VACANT LAND FOR SALE OR LEASE

Commercial/Retail Land, Lake County

1299 S DUNCAN DRIVE • TAVARES, FL • 32778



PROPERTY OVERVIEW

Property Size Available	1.04 Acres
Property Type	Vacant Land
Zoning	Commercial
Submarket	Lake County

PROPERTY & LOCATION FEATURES

- + Co-Retailers - O'Reilly's and Wash City
- + Owner will Sell or Ground Lease
- + High exposure 38,000+ cars per day
- + Entitled for 2,500 +/- square feet
- + New retail development on Duncan Drive
- + Great visibility

For additional information, contact:

J.R. Long, CCIM
(850) 509-2137 mobile
jrlong@ciminelli.com

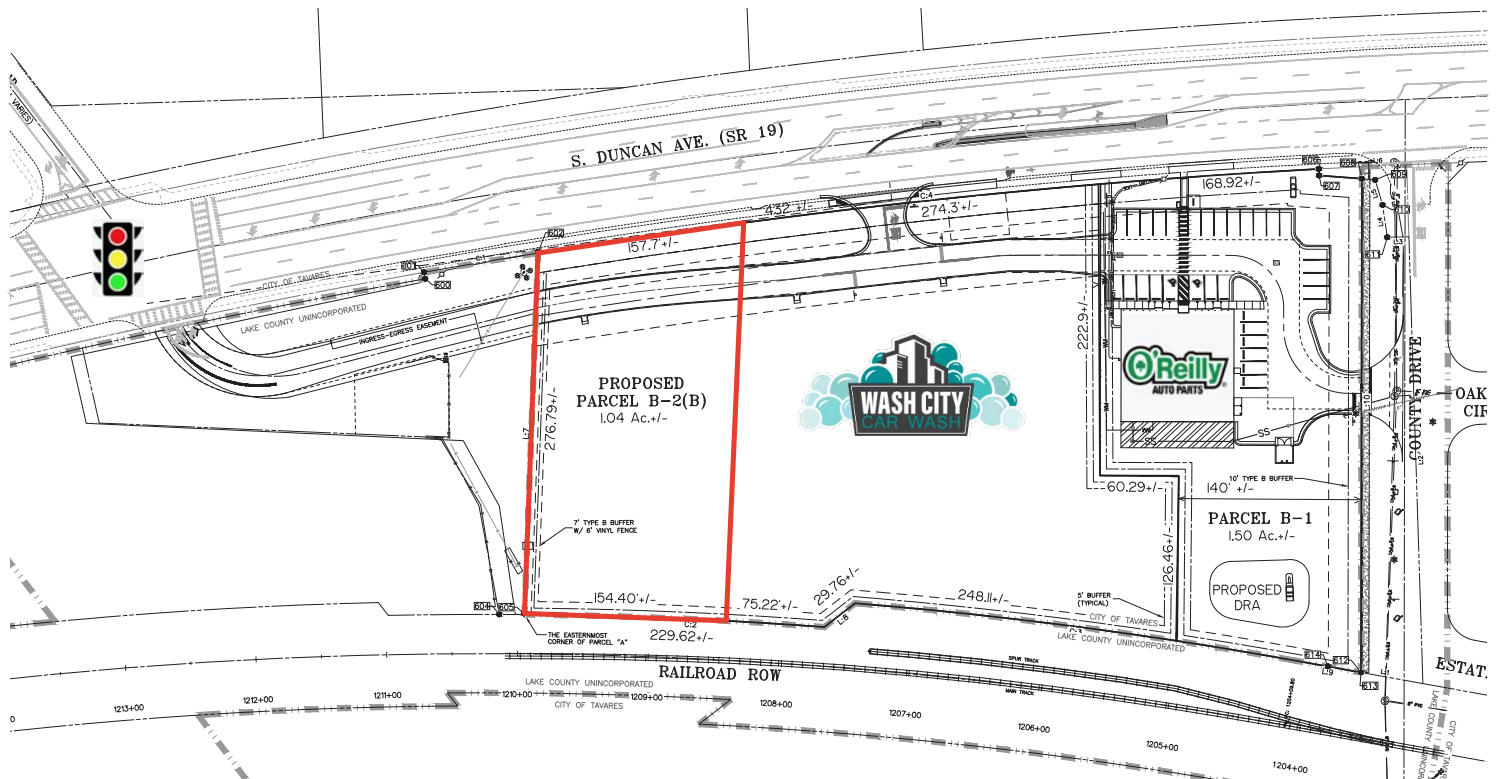
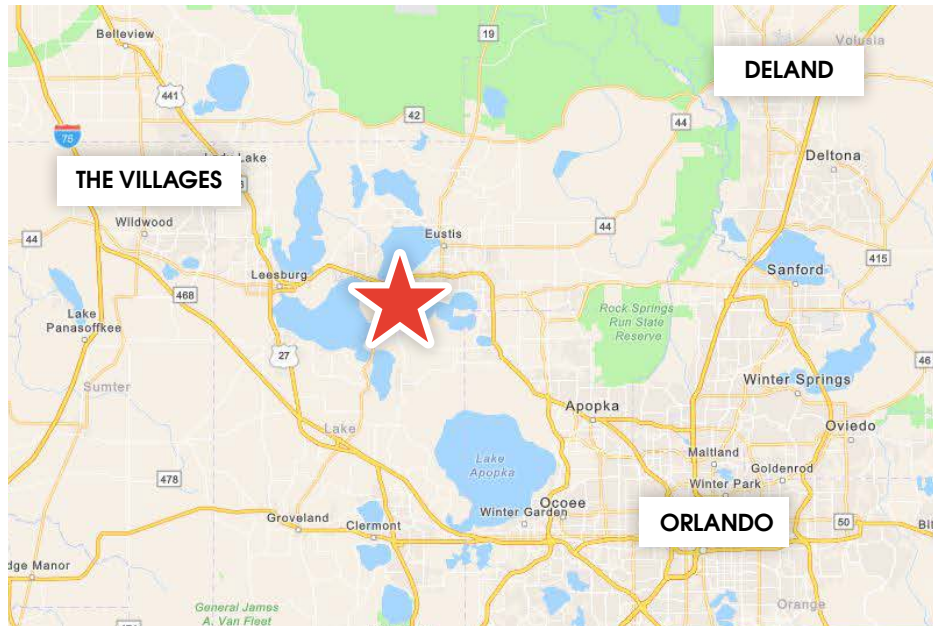
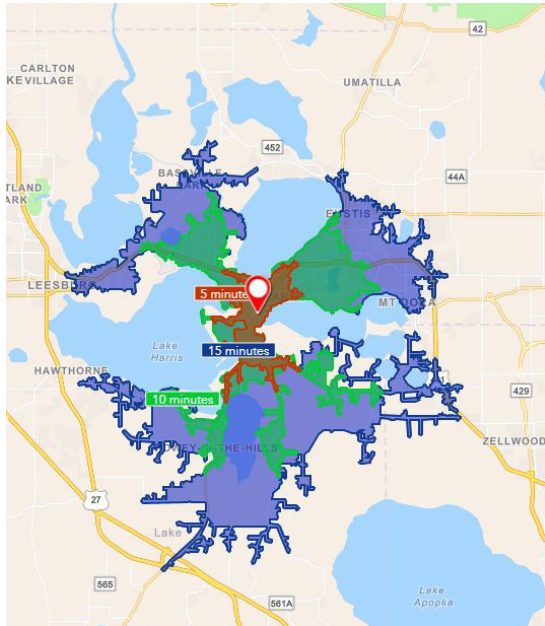
Ciminelli
REAL ESTATE SERVICES
PROCTOR & LONG GROUP

VACANT LAND FOR SALE OR LEASE

Commercial/Retail Land, Lake County

1299 S DUNCAN DRIVE • TAVARES, FL • 32778

DRIVE TIMES



For additional information, contact:

J.R. Long, CCIM
(850) 509-2137 mobile
jrlong@ciminelli.com

Ciminelli
REAL ESTATE SERVICES
PROCTOR & LONG GROUP

825 Thomasville Rd • Tallahassee, FL 32303 + Office Phone: (850) 765-7063 + www.CiminelliFlorida.com

All information given herein is obtained from sources considered reliable. However, we are not responsible for misstatement of facts, errors, omissions, prior sale, withdrawal from market, modification of mortgage commitment, terms and considerations, or change in price without notice. The information supplied herein is for informational purposes only and shall not contain a warranty or assurance that said information is correct. Any person intending to rely upon the information supplied herein should verify said information independently.