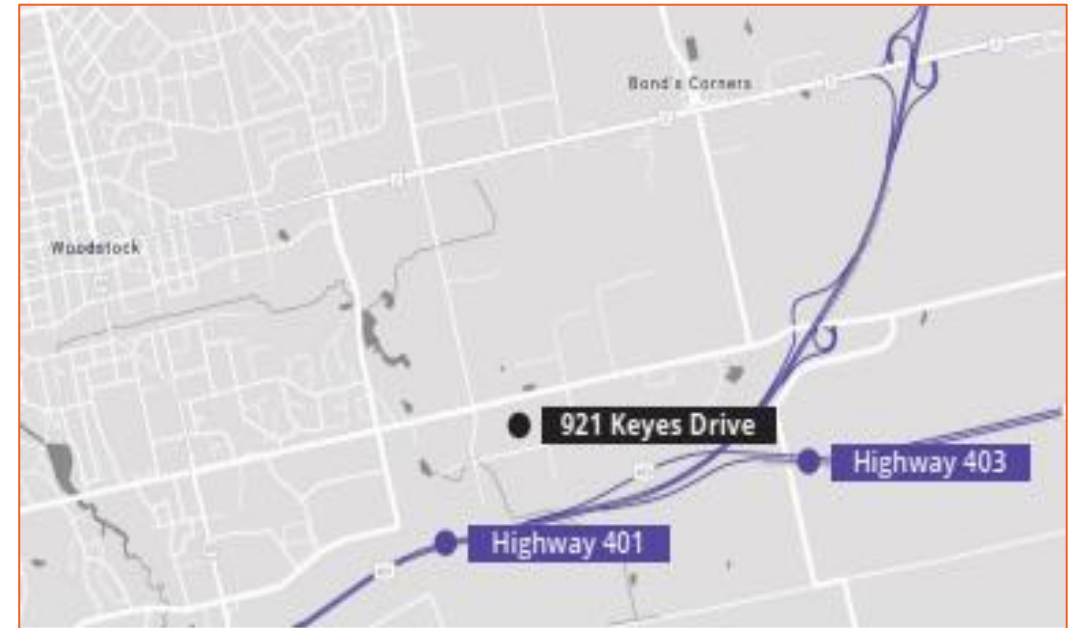
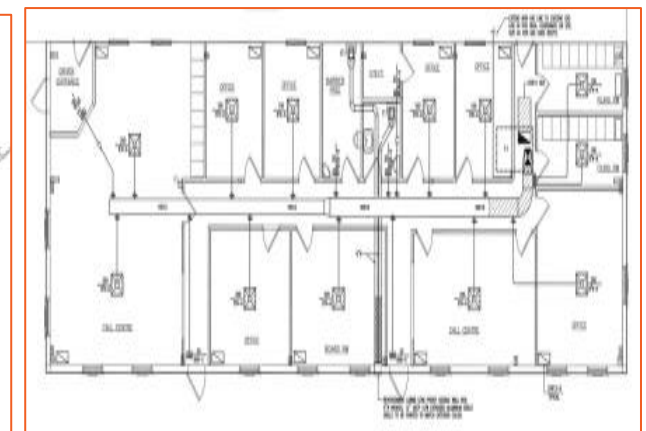
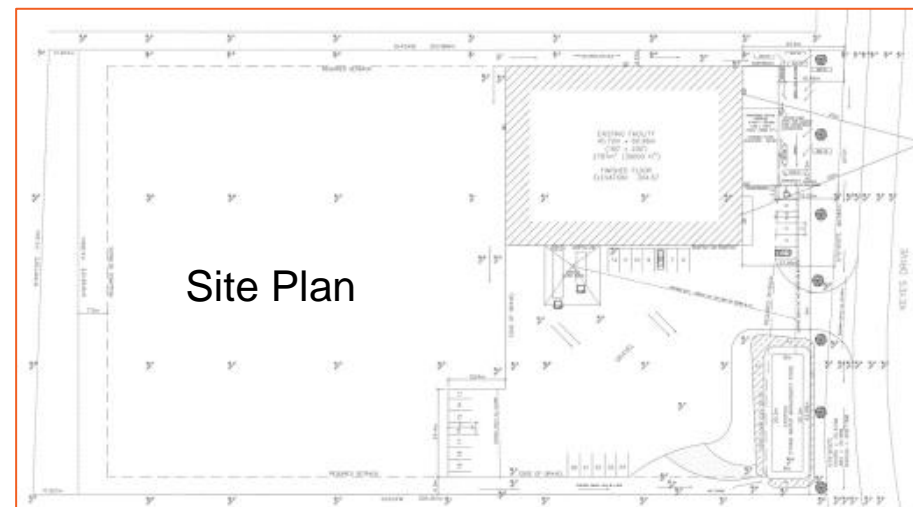
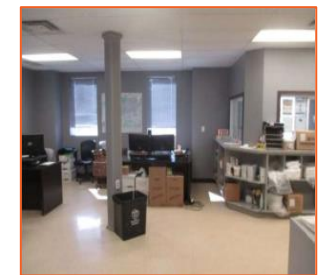
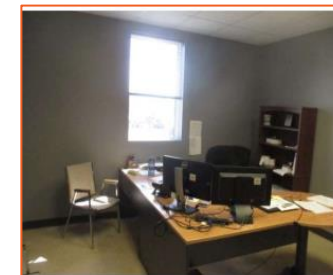


HIGHWAY 401/ 403 – COMMERCE WAY BUSINESS PARK**921 Keyes Drive, Woodstock, Ontario
35,000 SF with 3,000 SF Office on 5.75 Acres**

- 9 + Bay facility: 4 Truck Level Doors, 5 Drive In Doors to 18 ft clear height
- 2.5 Acres excess land : Building situated on southeast corner of property
- Graveled secure yard with outside storage permitted & transportation use
- Zoned M2 & M3 as per City of Woodstock Zoning By-Law Oxford County
- <https://www.cityofwoodstock.ca/en/residential-services/zoning-bylaw.aspx>
- https://www.oxfordcounty.ca/en/services-for-you/resources/Community-Planning/WDSK/ZBL/Section18_RestrictedIndustrial.pdf
- https://www.oxfordcounty.ca/en/services-for-you/resources/Community-Planning/WDSK/ZBL/Section19_GeneralIndustrial.pdf

921 Keyes Drive, Woodstock, Ontario : 35,000 SF with 3,000 SF Office on 5.75 Acres**Interior Office Layout**