



LEASE

101 E Commonwealth Ave

101 EAST COMMONWEALTH AVENUE

Fullerton, CA 92832

PRESENTED BY:

NOAH BROWN

O: 714.446.0600

noah.brown@svn.com

CalDRE #02259737

PROPERTY SUMMARY



PROPERTY DESCRIPTION

SVN Vanguard is pleased to present 101 E. Commonwealth Avenue, a second-floor creative office environment in the heart of Downtown Fullerton. The approximately 2,760 square feet of office space is comprised of eight (8) private office suites, available individually, with suite sizes ranging from approximately 295 to 510 square feet—ideal for individuals and small businesses seeking a private, comfortable workspace.

Recently renovated, the space features bright private offices, a shared conference room, kitchen area, and private men's and women's restrooms, along with ample on-site parking. Located just steps from Downtown Fullerton's cafés, restaurants, gyms, and shops, the property offers the perfect balance of productivity, privacy, and downtown energy.

OFFERING SUMMARY

LEASE RATE: \$850.00 - \$1,100.00 per month (Gross)

NUMBER OF UNITS: 8

AVAILABLE SF: 295 - 510 SF

NOAH BROWN

O: 714.446.0600

noah.brown@svn.com

CalDRE #02259737

SPACES

LEASE RATE

SPACE SIZE

OFFICE B \$1,000 per month 445 SF

OFFICE F \$850 per month 295 SF

OFFICE G \$850 per month 295 SF

OFFICE H \$850 per month 300 SF

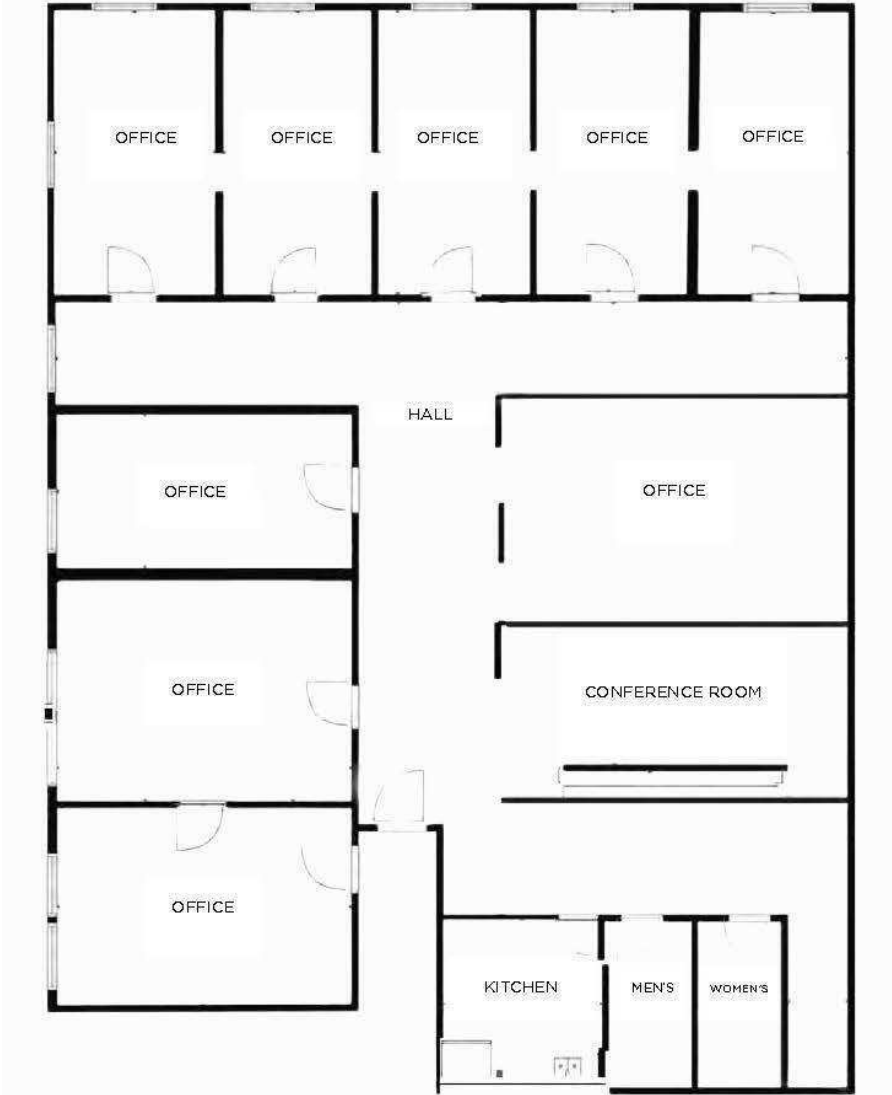
OFFICE I \$1,100 per month 510 SF

ADDITIONAL PHOTOS



NOAH BROWN
O: 714.446.0600
noah.brown@svn.com
CalDRE #02259737

FLOOR PLAN



NOAH BROWN
O: 714.446.0600
noah.brown@svn.com
CalDRE #02259737

LOCATION MAP



NOAH BROWN
O: 714.446.0600
noah.brown@svn.com
CalDRE #02259737