

Click to view property video



Two-building
office campus



4.63-acre site



Abundant parking
ratio of 5.0/1,000 sf



Onsite property
management



Walkable amenities
located in nearby
Weston Town Center



Easy access to
I-75, I-595, and the
Sawgrass Expressway

Rental rate

\$32.00 psf NNN

Operating expenses

± \$13.00 psf



**Discover Weston
Town Center**

**Get in
touch:**

Greg Martin
Principal, Managing Director -
Fort Lauderdale & Boca Raton
954 903 1815
greg.martin@avisonyoung.com

Justin Cope, SIOR
Principal
954 903 3701
justin.cope@avisonyoung.com

Lisa Blumer, CCIM
Principal
954 903 3703
lisa.blumer@avisonyoung.com

Availability

Building I

2000 Ultimate Way

Three stories

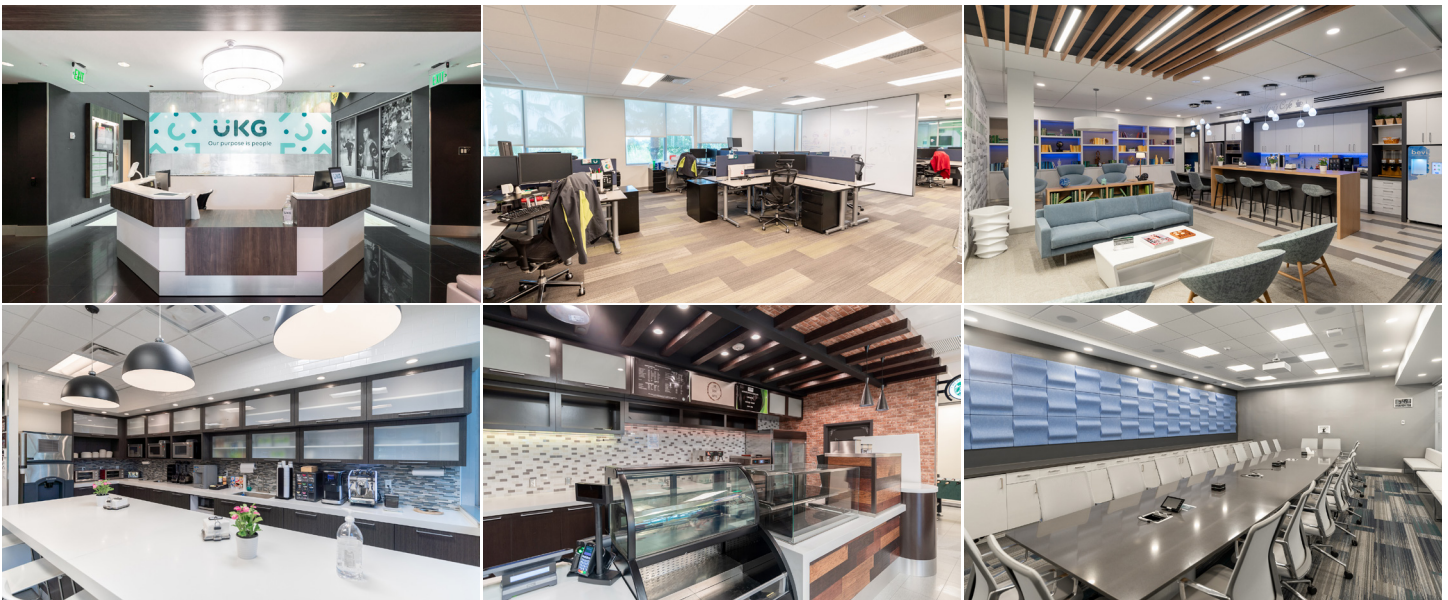
– 39,872 sf

Building II

2002 Ultimate Way

Two stories

– 21,392 sf



Get in touch:

Greg Martin
Principal, Managing Director -
Fort Lauderdale & Boca Raton
954 903 1815
greg.martin@avisonyoung.com

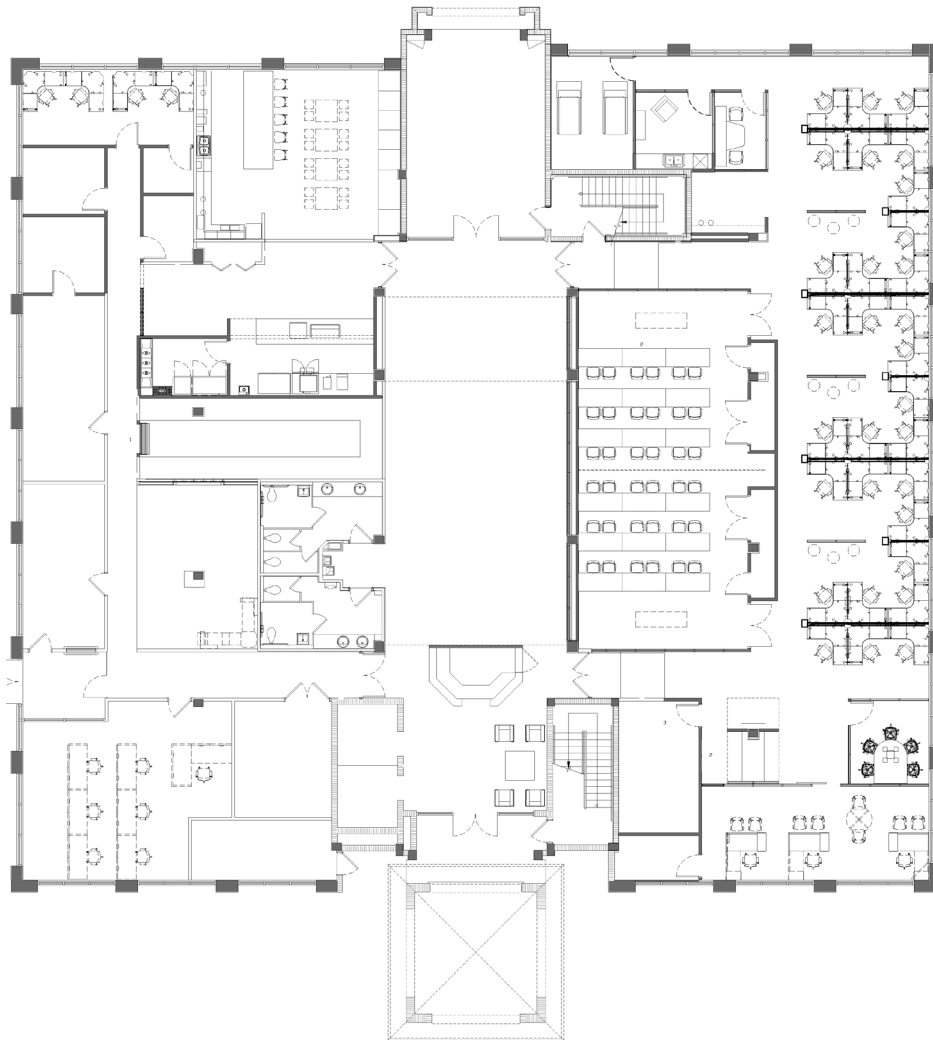
Justin Cope, SIOR
Principal
954 903 3701
justin.cope@avisonyoung.com

Lisa Blumer, CCIM
Principal
954 903 3703
lisa.blumer@avisonyoung.com

Weston Corporate Campus
(former UKG campus)

2000 & 2002 Ultimate Way | Weston, FL 33326

Building I - 39,872 sf
1st floor



**Get in
touch:**

Greg Martin
Principal, Managing Director -
Fort Lauderdale & Boca Raton
954 903 1815
greg.martin@avisonyoung.com

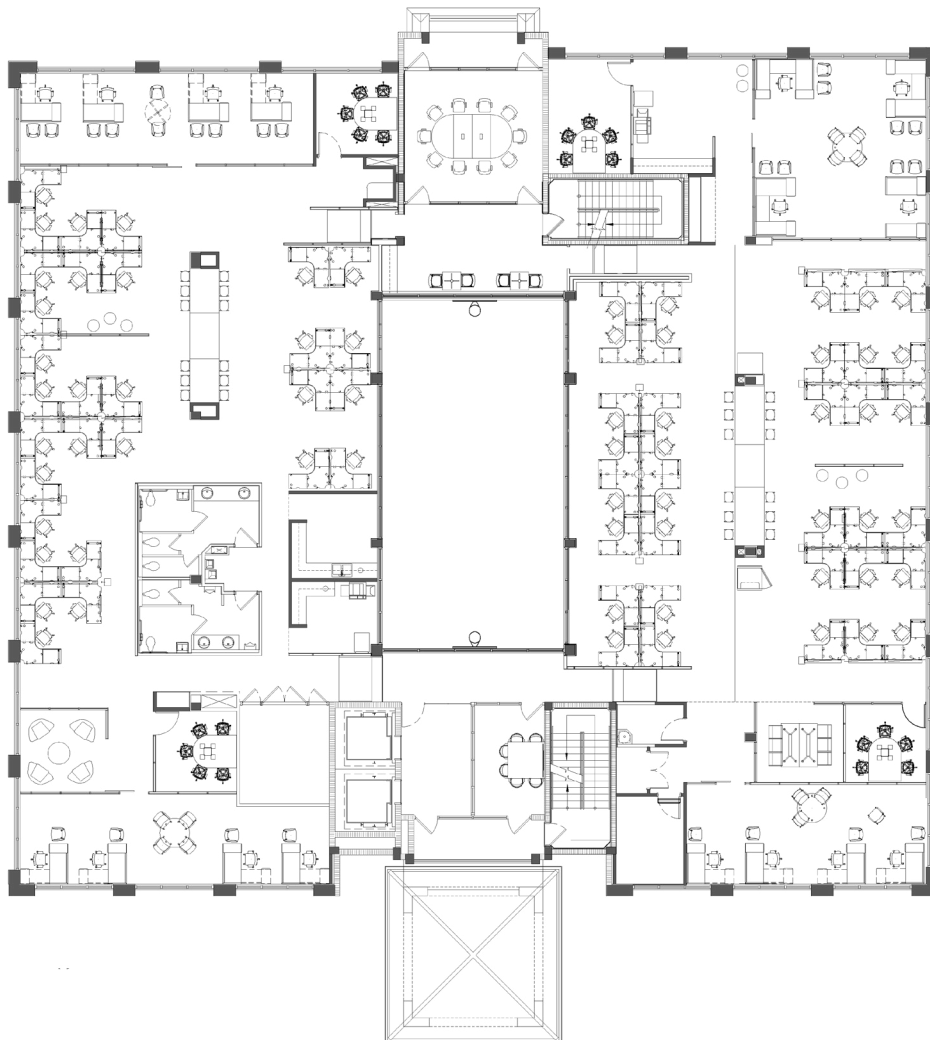
Justin Cope, SIOR
Principal
954 903 3701
justin.cope@avisonyoung.com

Lisa Blumer, CCIM
Principal
954 903 3703
lisa.blumer@avisonyoung.com

Weston Corporate Campus
(former UKG campus)

2000 & 2002 Ultimate Way | Weston, FL 33326

Building I - 39,872 sf
2nd floor



**Get in
touch:**

Greg Martin
Principal, Managing Director -
Fort Lauderdale & Boca Raton
954 903 1815
greg.martin@avisonyoung.com

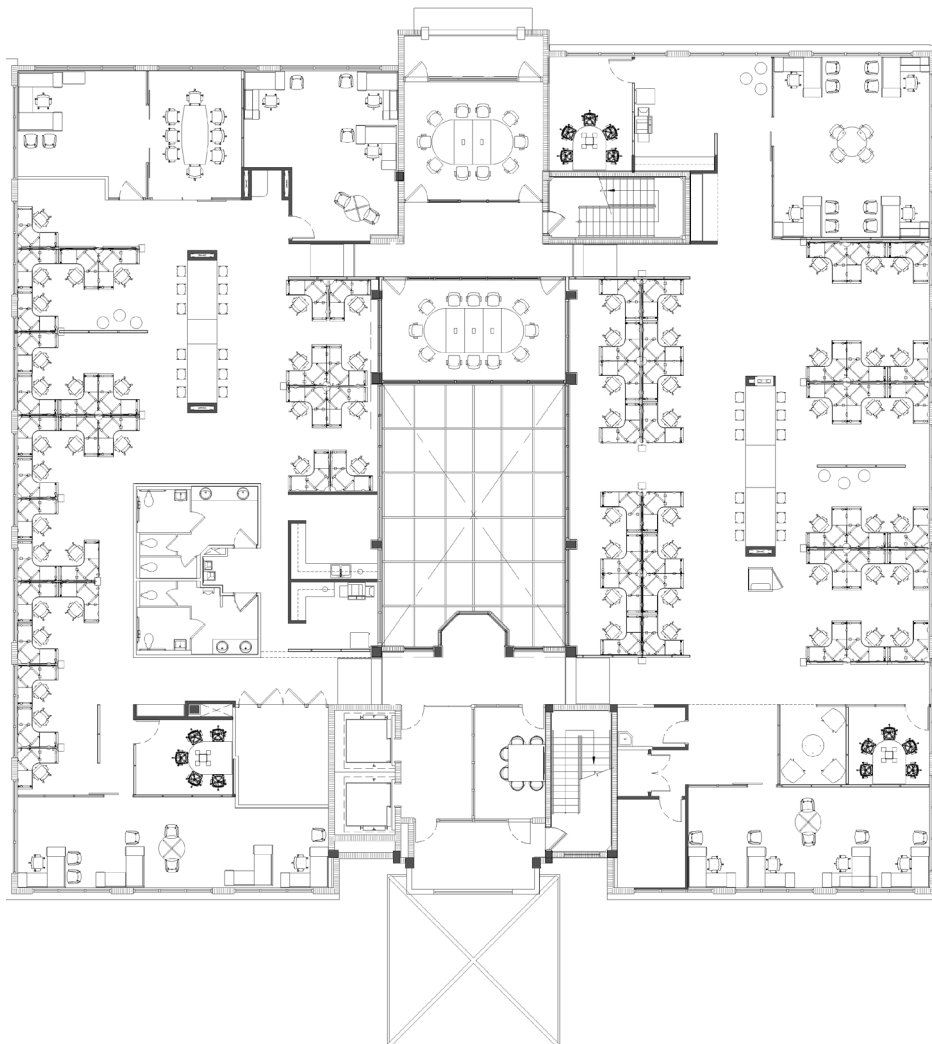
Justin Cope, SIOR
Principal
954 903 3701
justin.cope@avisonyoung.com

Lisa Blumer, CCIM
Principal
954 903 3703
lisa.blumer@avisonyoung.com

Weston Corporate Campus
(former UKG campus)

2000 & 2002 Ultimate Way | Weston, FL 33326

Building I - 39,872 sf
3rd floor



**Get in
touch:**

Greg Martin
Principal, Managing Director -
Fort Lauderdale & Boca Raton
954 903 1815
greg.martin@avisonyoung.com

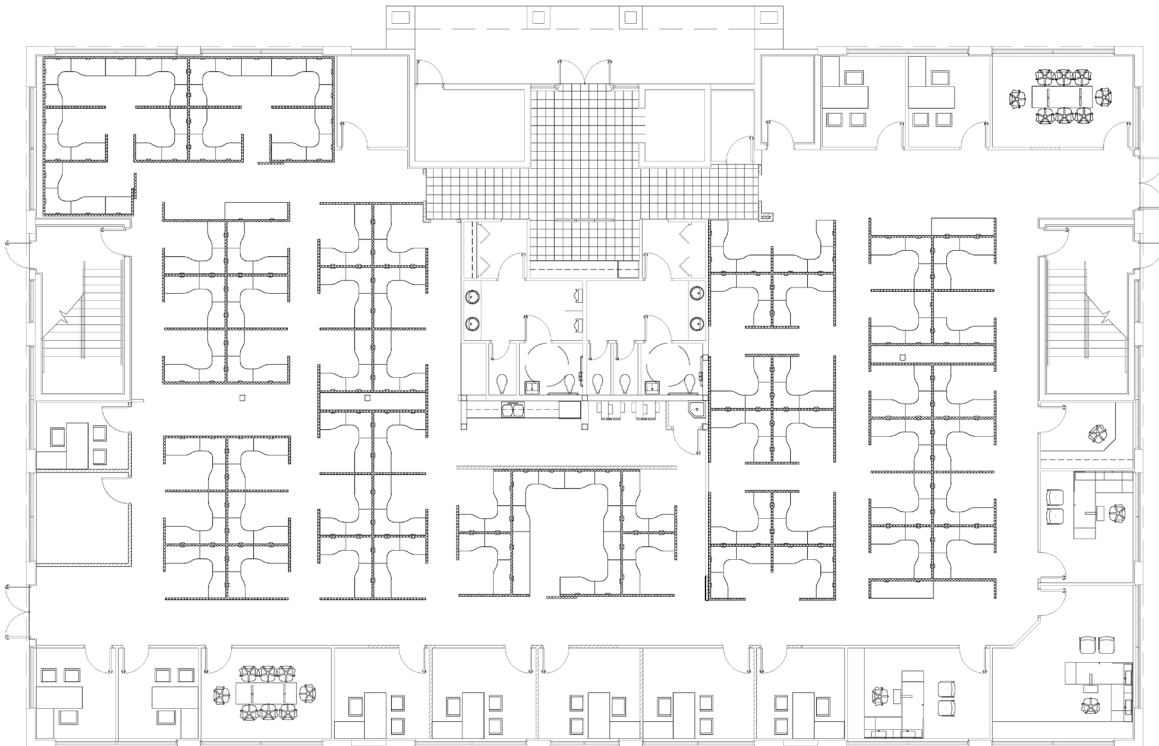
Justin Cope, SIOR
Principal
954 903 3701
justin.cope@avisonyoung.com

Lisa Blumer, CCIM
Principal
954 903 3703
lisa.blumer@avisonyoung.com

Weston Corporate Campus
(former UKG campus)

2000 & 2002 Ultimate Way | Weston, FL 33326

Building II - 21,392 sf
1st floor



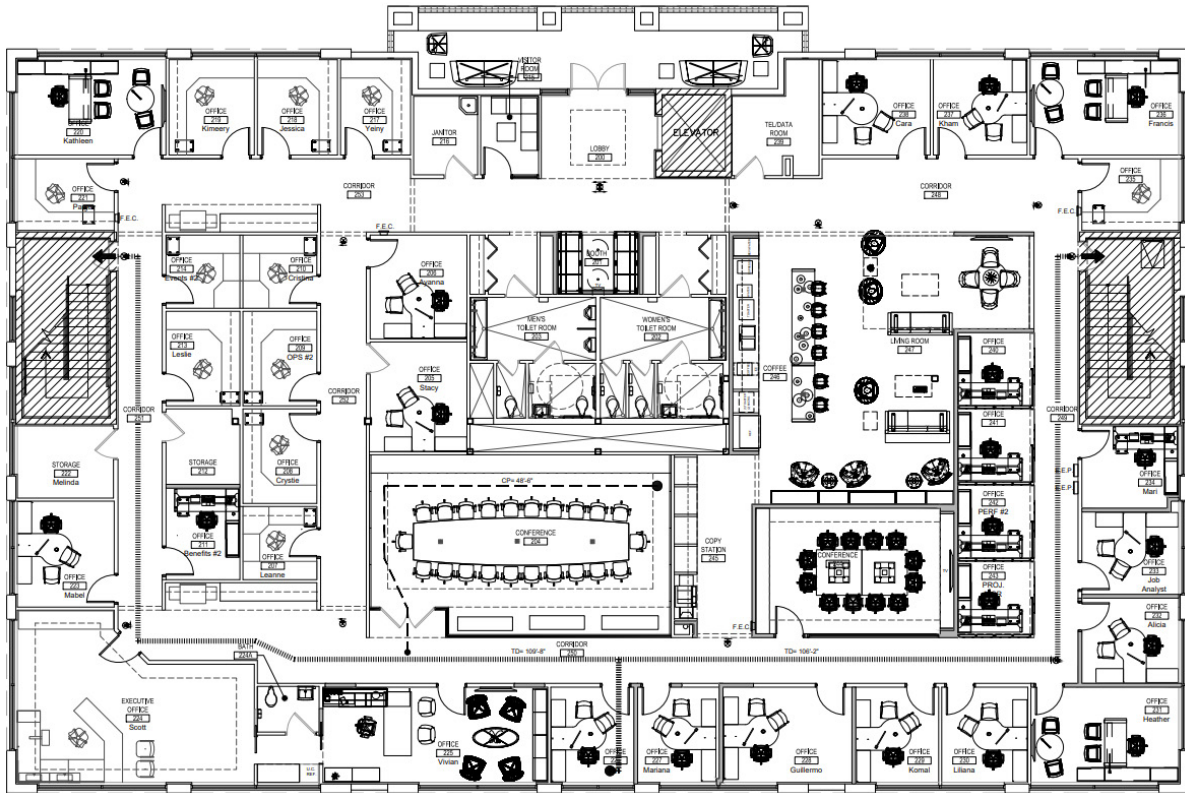
**Get in
touch:**

Greg Martin
Principal, Managing Director -
Fort Lauderdale & Boca Raton
954 903 1815
greg.martin@avisonyoung.com

Justin Cope, SIOR
Principal
954 903 3701
justin.cope@avisonyoung.com

Lisa Blumer, CCIM
Principal
954 903 3703
lisa.blumer@avisonyoung.com

Building II - 21,392 sf
2nd floor



**Get in
touch:**

Greg Martin
Principal, Managing Director -
Fort Lauderdale & Boca Raton
954 903 1815
greg.martin@avisonyoung.com

Justin Cope, SIOR
Principal
954 903 3701
justin.cope@avisonyoung.com

Lisa Blumer, CCIM
Principal
954 903 3703
lisa.blumer@avisonyoung.com

Weston Corporate Campus
(former UKG campus)

2000 & 2002 Ultimate Way | Weston, FL 33326

Property Location



Restaurants

- 1 Flanigan's
- 2 Tijuana Flats
- 3 BurgerFi
- 4 PANNA
- 5 Los Verdes

Services / Other

- 1 FedEx Print & Ship
- 2 PNC Bank
- 3 USPS
- 4 Weston Town Center
- 5 Publix
- 6 AMC Weston 8
- 7 Cleveland Clinic Florida
- 8 Bank of America
- 9 Courtyard by Marriott
- 10 Comfort Suites

Get in touch:

Greg Martin
Principal, Managing Director -
Fort Lauderdale & Boca Raton
954 903 1815
greg.martin@avisonyoung.com

Justin Cope, SIOR
Principal
954 903 3701
justin.cope@avisonyoung.com

Lisa Blumer, CCIM
Principal
954 903 3703
lisa.blumer@avisonyoung.com