

121 LOGISTICS PARK

BLDG 1 | 500 W STATE HIGHWAY 121, COPPELL

BLDG 2 | 500 W VISTA RIDGE MALL DR, LEWISVILLE



FOR LEASE

339,287 TOTAL SQUARE FEET | 2 BUILDINGS

Warehouse | Distribution Space Delivering Q4 2025

LEASED BY:



OWNED AND DEVELOPED BY:



121 LOGISTICS PARK



BUILDING 1

500 W State Highway 121, Coppell, TX 75019

Building Size	257,598 SF (Divisible to 60,933 SF)
Spec Office	3,470 SF
Clear Height	36'
Truck Court	185'
Dock Doors	49 (9' x 10')
Ramps	2 (12' x 14')
Dock Levelers	16 (40,000 LB Pit Levelers)
Car Parks	175
Trailer Parks	69
Building Depth	280'
Configuration	Rear Load
Sprinkler	ESFR

BUILDING 2

500 W Vista Ridge Mall Dr, Lewisville, TX 75067

Building Size	81,689 SF
Spec Office	3,265 SF
Clear Height	32'
Truck Court	130' - 178'
Dock Doors	18 (9' x 10')
Ramps	2 (12' x 14')
Dock Levelers	6 (40,000 LB Pit Levelers)
Car Parks	55
Trailer Parks	11
Building Depth	180'
Configuration	Front Load
Sprinkler	ESFR

FOR LEASING INFORMATION



Adam Graham, SIOR, CCIM
agraham@lee-associates.com
C: 214.335.3320

Alex Wilson
alexw@lee-associates.com
C: 443.370.3427

Tomas Wilson
twilson@lee-associates.com
C: 857.297.7000

OWNED AND DEVELOPED BY:



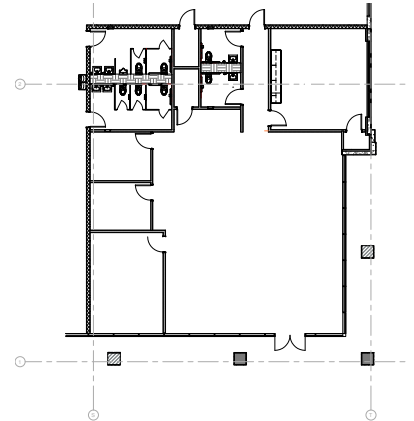
121 LOGISTICS PARK



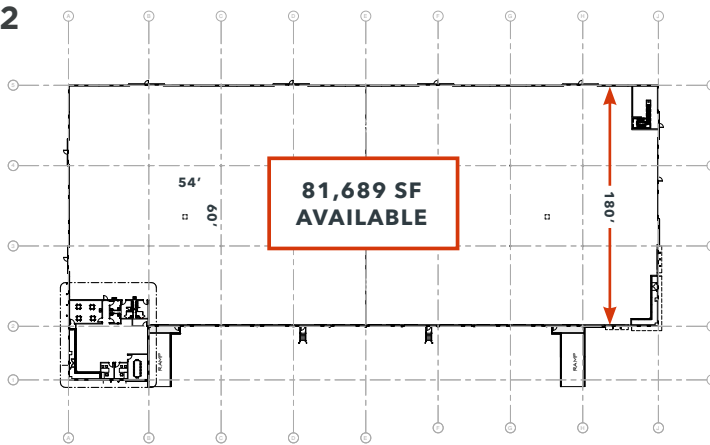
BUILDING 1



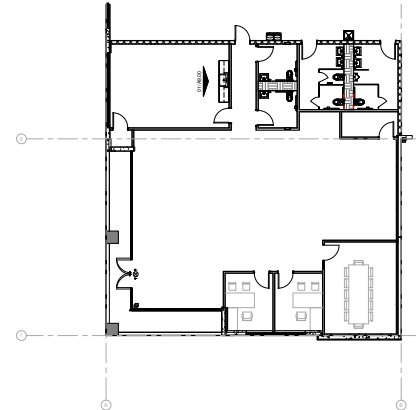
OFFICE - 3,470 SF



BUILDING 2



OFFICE - 3,265 SF



FOR LEASING INFORMATION



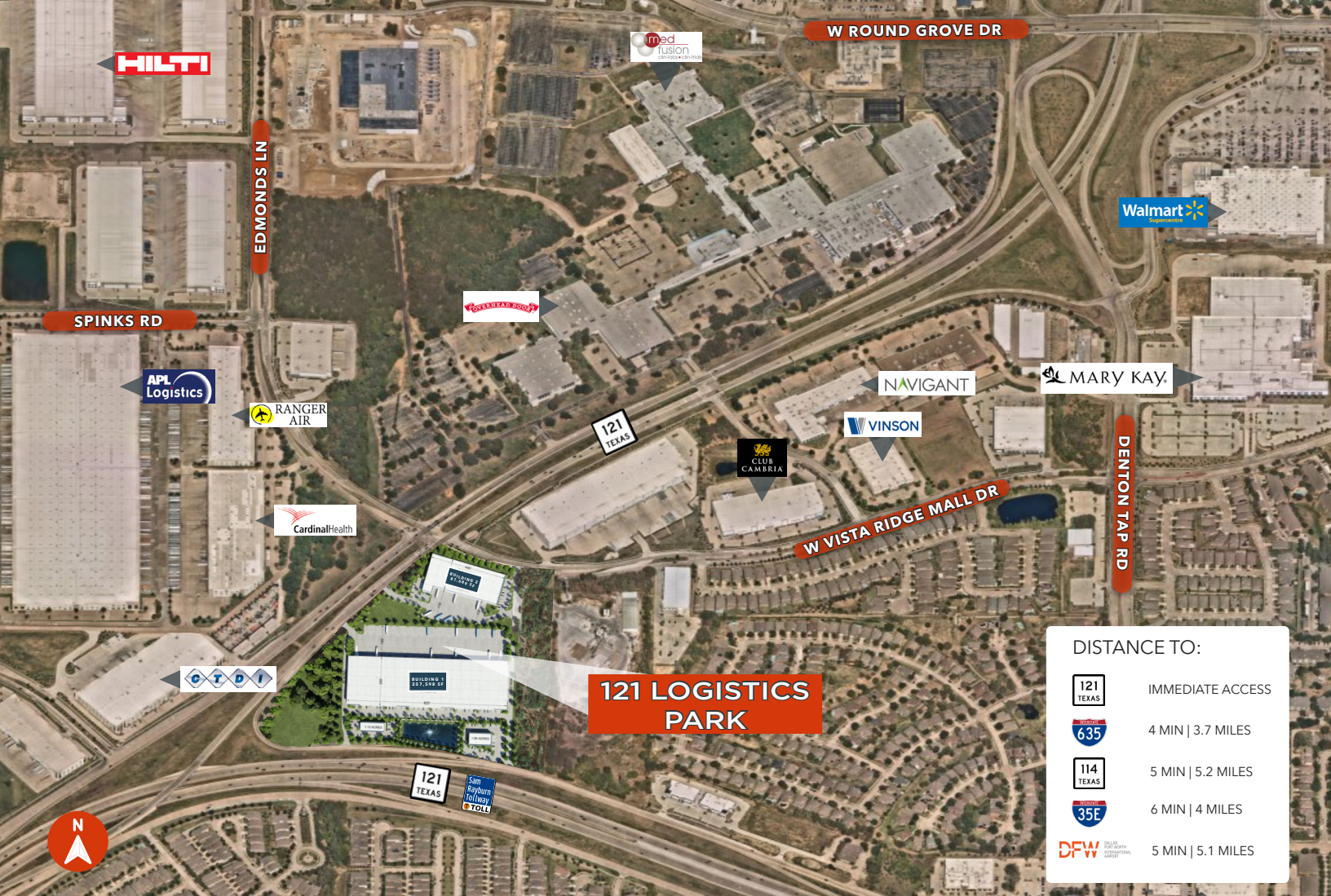
Adam Graham, SIOR, CCIM
agraham@lee-associates.com
C: 214.335.3320

Alex Wilson
alexw@lee-associates.com
C: 443.370.3427

Tomas Wilson
twilson@lee-associates.com
C: 857.297.7000

OWNED AND DEVELOPED BY:





LABOR HIGHLIGHTS

**White-Collar
Workers**
(10 mile radius)

22,945

Population:

43,190

**Blue-Collar
Workers**
(10 mile radius)

1,782

Average
Household Income:

\$132,423

AREA HIGHLIGHTS

- Coppel Ranks #66 in Best Places to Live in America
- Coppel Ranks #4 Best Cities to Relocate in America
- Coppel Ranks #14 Best Suburbs for Young Professionals in Texas
- Abundant Amount of Retail, Restaurants, and Entertainment Within 1 Mile

FOR LEASING INFORMATION



Adam Graham, SIOR, CCIM
agraham@lee-associates.com
C: 214.335.3320

Alex Wilson
alexw@lee-associates.com
C: 443.370.3427

Tomas Wilson
twilson@lee-associates.com
C: 857.297.7000

OWNED AND DEVELOPED BY:

