

Baldwin East

Medical/Professional Office

1,197 RSF Available

EquityPartners
we provide Office Space

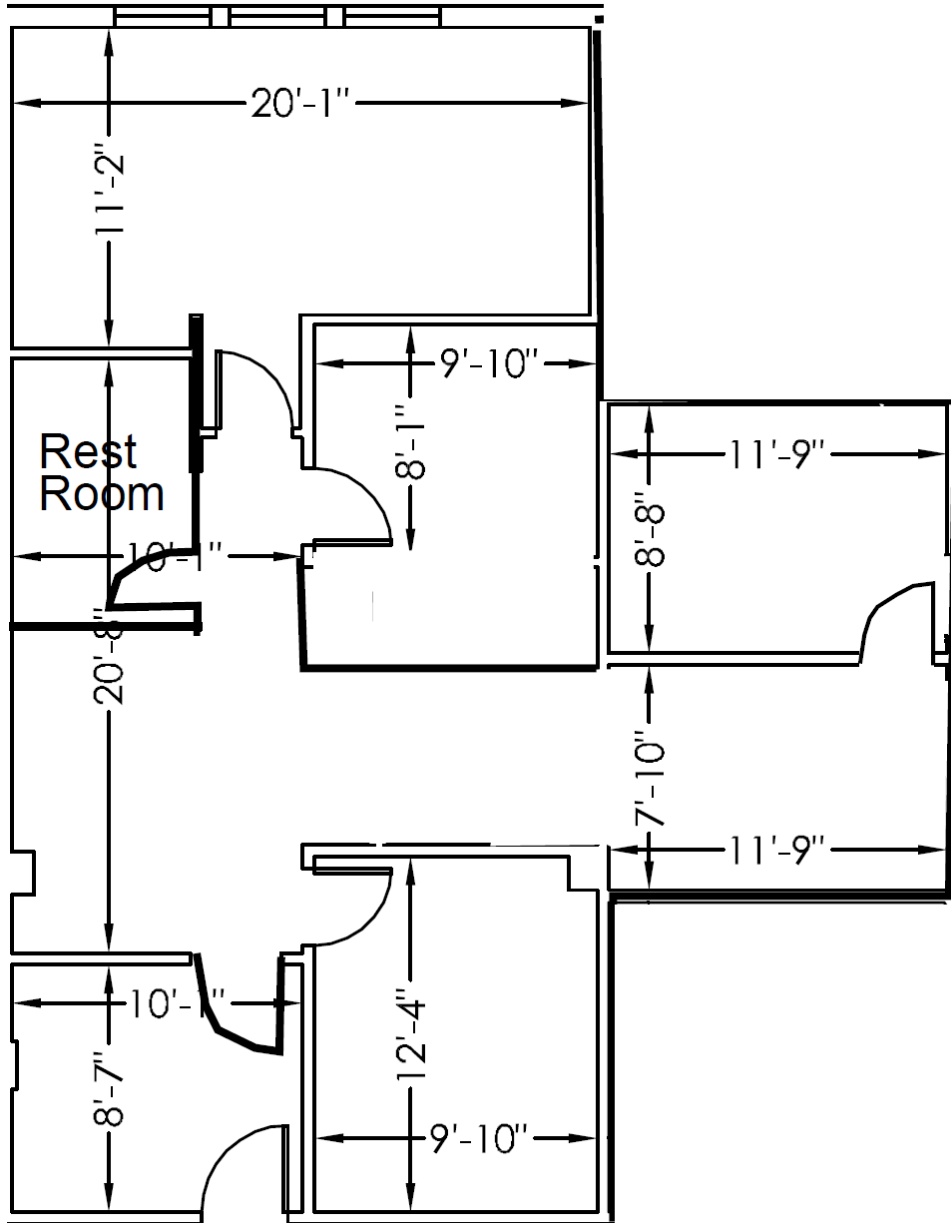


PROPERTY HIGHLIGHTS:

- 1320 North Semoran Blvd. Suite 113 Orlando, FL 32807
- 1,197 Rentable Square Feet Available
- Multiple Private Offices and Full Break Area
- Ample Parking Available
- Excellent Access, adjacent SR 408, SR 417 and SR 50
- Close proximity to Orlando International Airport and Downtown Orlando
- Full-Service Lease, Janitorial Included
- Professionally Managed
- Onsite Ownership

For additional information, please contact:
O: 407.660.4949
Leasing@equitypartners.net

Kristen Fess
Michael G. Fess
Faith Pamplin
Mike Fess



For additional information, please contact:
O: 407.660.4949
Leasing@equitypartners.net

Kristen Fess
Michael G. Fess
Faith Pamplin
Mike Fess