



## Retail Space for Lease

Ramsey Town Square  
14050 St. Francis Blvd

### AREA AMENITIES

- Join Caribou Coffee, Great Clips, & other national and local tenants
- Adjacent to Speedway gas and Walgreens
- Visibility & Signage to Hwy 47 (St. Francis Blvd)
- 22,00 Vehicles per day (MNDot 2019)
- Corner of Bunker Lake Blvd & Hwy 47
- Great Demographics
- Suite J: 1,720 SF of End Cap
- Suite G: 2,400 SF, inline



### PROPERTY DETAILS

Lease Rate: 18.00/SF NNN  
CAM/Taxes: \$7.99/SF (2023)

### FOR MORE INFORMATION, CONTACT

**Marty Fisher/Mike Fisher**

763-862-2005

[mfisher@premiercommercialproperties.com](mailto:mfisher@premiercommercialproperties.com)

[mikefisher@premiercommercialproperties.com](mailto:mikefisher@premiercommercialproperties.com)



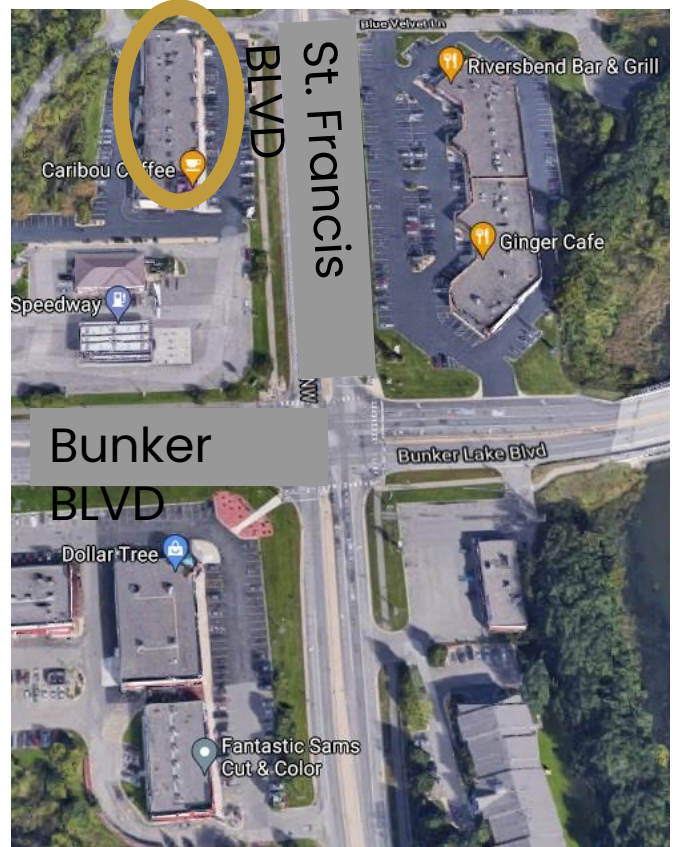
**PREMIER**  
COMMERCIAL  
PROPERTIES

# FOR LEASE

**CONTACT:** Marty Fisher

**MOBILE:** 612-708-2873

**EMAIL:** mfisher@premiercommercialproperties.com





**CONTACT:** Marty Fisher

**MOBILE:** 612-708-2873

**EMAIL:** mfisher@premiercommercialproperties.com

Caribou  
Coffee

Allstate

Ice Cream Shop

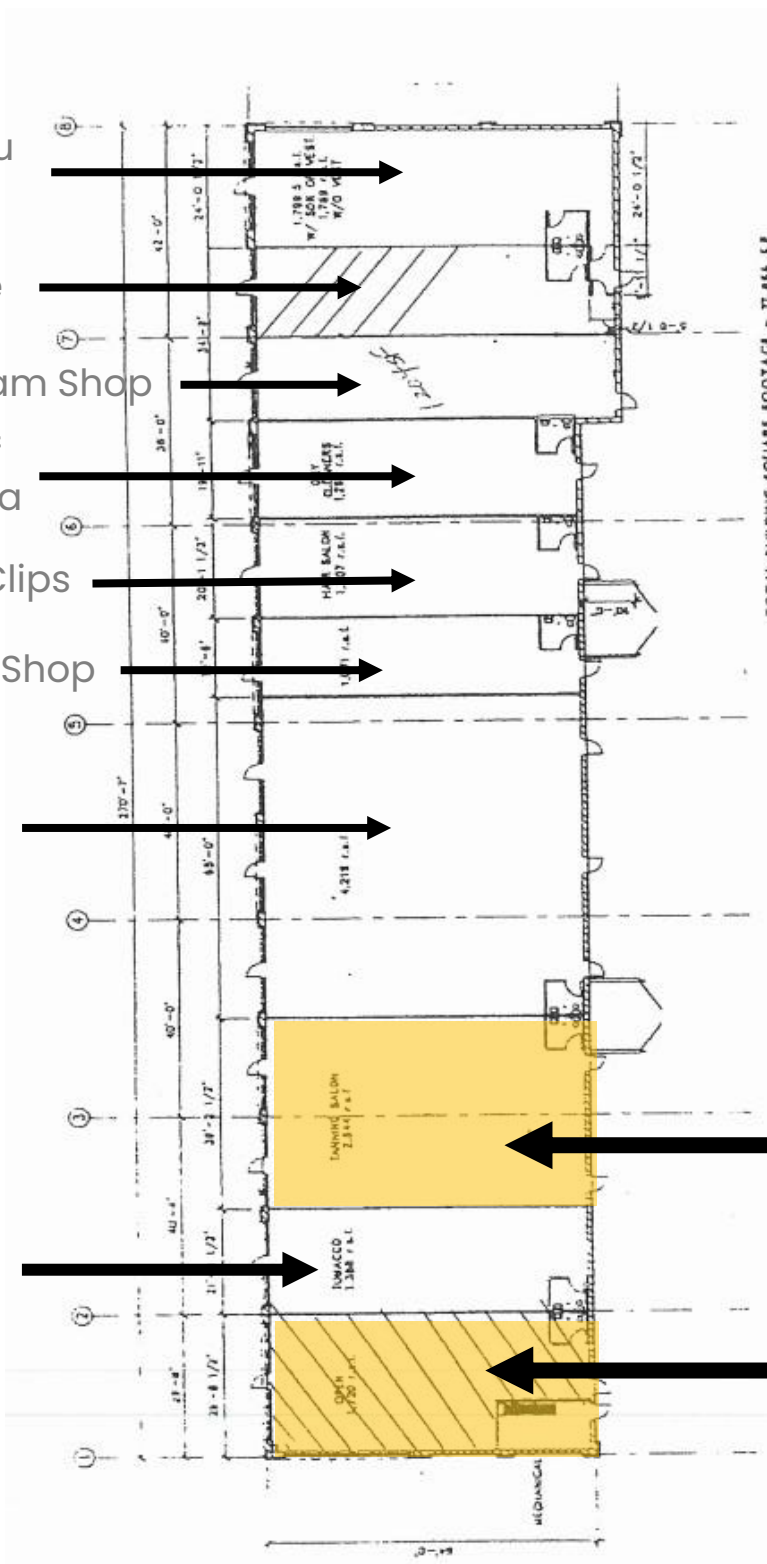
Bank of  
America

Great Clips

Smoke Shop

Karate

Jimmy  
John's



TOTAL BUILDING SQUARE FOOTAGE = 17,854 SF



1. AS BUILT DIMISING WALL PLAN  
48-1-2008  
NOT TO SCALE

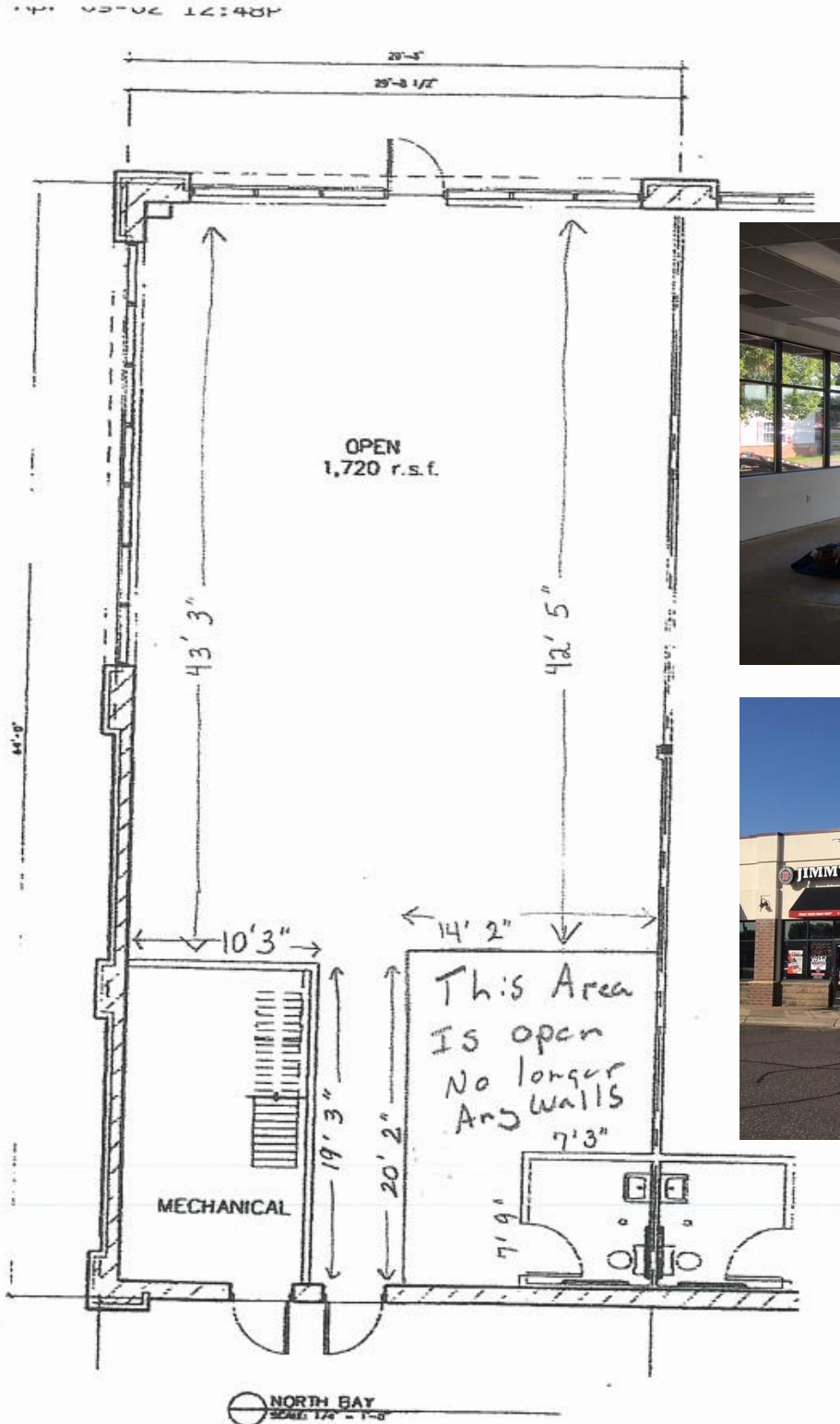


Suite G – 2,400 SF

Suite J – 1,720 SF Endcap



## Suite J – 1,720 SF Endcap





**PREMIER**  
COMMERCIAL  
PROPERTIES

# FOR LEASE

**CONTACT:** Marty Fisher

**MOBILE:** 612-708-2873

**EMAIL:** mfisher@premiercommercialproperties.com

Suite G – 2,400 SF  
In-line Space  
22,000 vehicles drive by per day





**CONTACT:** Marty Fisher

**MOBILE:** 612-708-2873

**EMAIL:** mfisher@premiercommercialproperties.com

## Demographics

<b>(2023 Demographics)</b>	<b>1 Mile</b>	<b>3 Miles</b>	<b>5 Miles</b>
Total Population	5,386	51,382	115,939
Total Households	1,814	19,236	42,157
Average Household Income	\$115,624	\$101,028	\$107,904

