



Industrial Building for Sale or Lease

**311 N BURCH STREET
OLATHE, KANSAS**

Property Highlights

- 15,280 sf industrial building on 1.17 acres
- Excellent location with quick access to I-35
- 3 dock-high loading doors
- 3 drive-in loading doors
- Drive-thru capability
- Fenced outdoor area
- Trench drain in place
- 18' clear height
- 480V three-phase power
- M-2 zoning
- \$2,250,000 sale price
- \$9.50/sf, NNN lease rate

For information, please contact:

Mark C. Long, SIOR, CCIM, CRE, LEED AP
President and Chief Executive Officer
t 816-512-1011
mlong@nzimmer.com

Seamus M. McLaughlin, SIOR
Senior Managing Director
t 816-268-4223
smclaughlin@nzimmer.com

1220 Washington Street, Suite 300
Kansas City, MO 64105

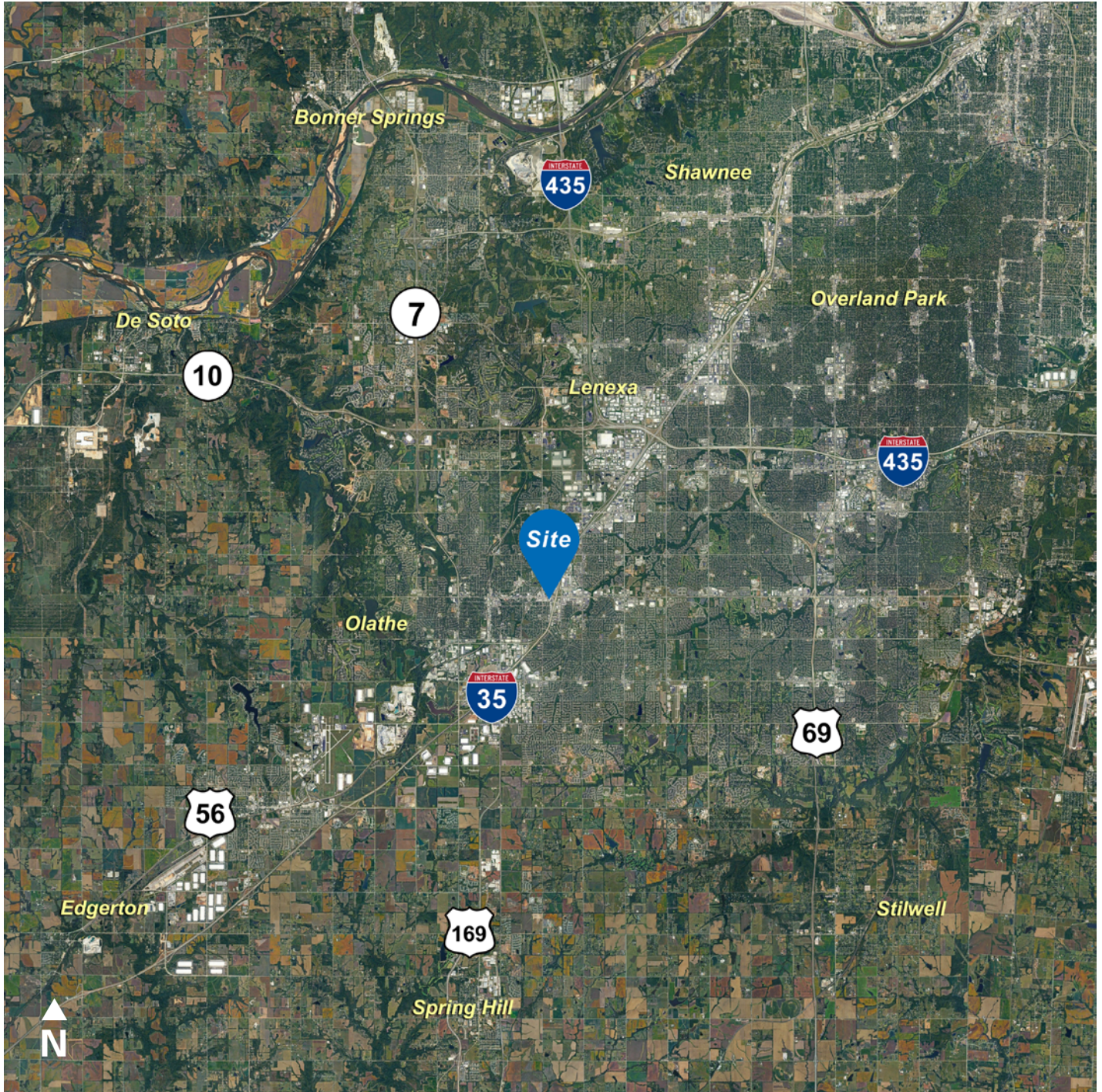
nrmkzimmer.com



NEWMARK
ZIMMER

The information contained herein has been obtained from sources deemed reliable but has not been verified and no guarantee, warranty or representation, either express or implied, is made with respect to such information. Terms of sale or lease and availability are subject to change or withdrawal without notice.

311 N BURCH STREET, OLATHE, KANSAS



CONTACT

Mark C. Long, SIOR, CCIM, CRE, LEED AP

President and Chief Executive Officer

t 816-512-1011

mlong@nzimmer.com

nmrkzimmer.com

Seamus M. McLaughlin, SIOR

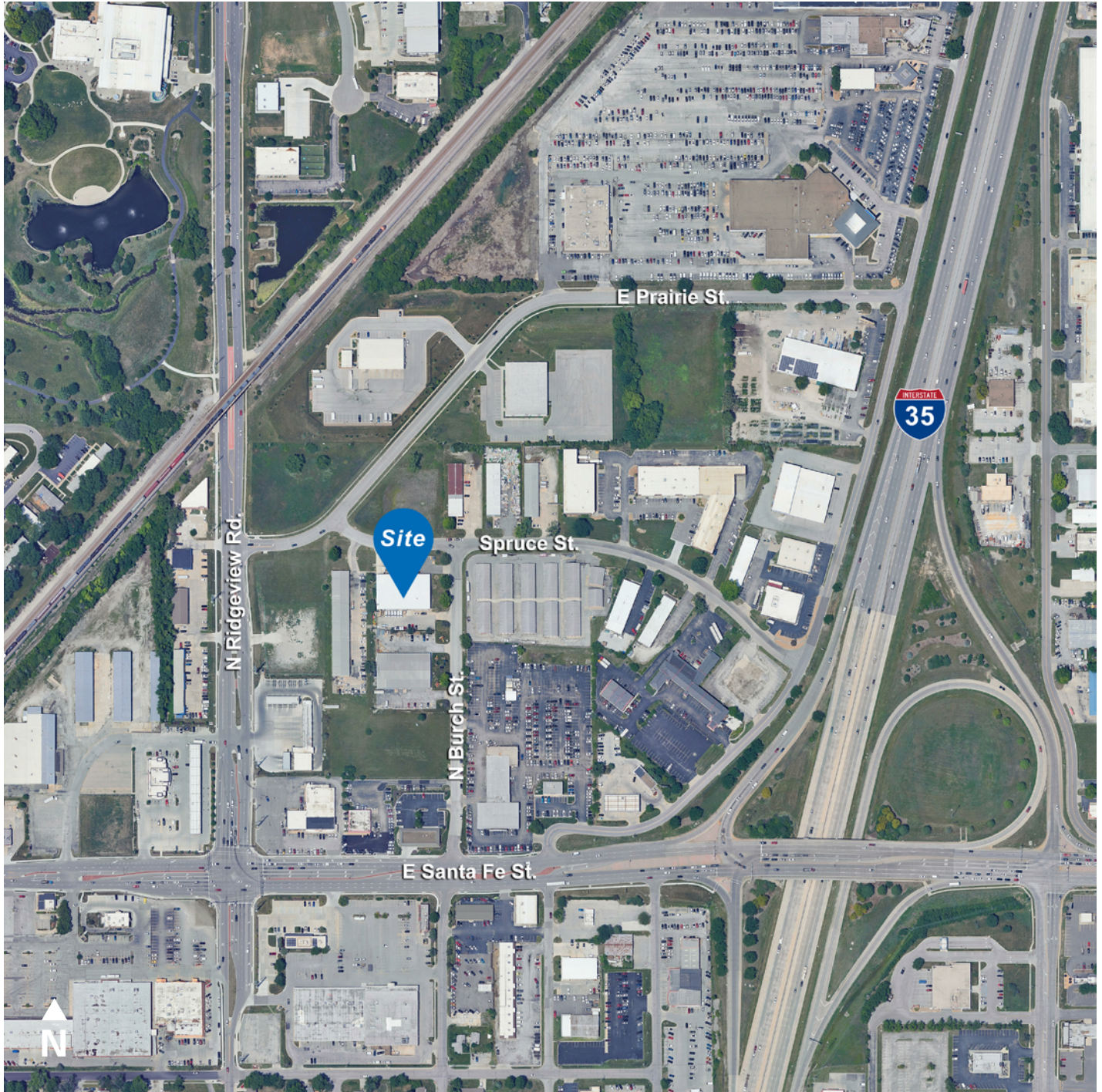
Senior Managing Director

t 816-268-4223

smclaughlin@nzimmer.com

NEWMARK
ZIMMER

311 N BURCH STREET, OLATHE, KANSAS



CONTACT

Mark C. Long, SIOR, CCIM, CRE, LEED AP

President and Chief Executive Officer

t 816-512-1011

mlong@nzimmer.com

nmrkzimmer.com

Seamus M. McLaughlin, SIOR

Senior Managing Director

t 816-268-4223

smclaughlin@nzimmer.com

NEWMARK
ZIMMER

311 N BURCH STREET, OLATHE, KANSAS



CONTACT

Mark C. Long, SIOR, CCIM, CRE, LEED AP

President and Chief Executive Officer

t 816-512-1011

mlong@nzimmer.com

nmrkzimmer.com

Seamus M. McLaughlin, SIOR

Senior Managing Director

t 816-268-4223

smclaughlin@nzimmer.com

NEWMARK
ZIMMER