



Katy Medical Plaza I & II

23510-23530 Kingsland Blvd | Houston, TX 77494



Welcoming A New Patient Experience

Building Features

- Two-Building Medical Office Building Plaza
- 2 miles from Memorial Hermann Katy Hospital
- Free surface parking
- 5.00/1,000 Parking Ratio
- Great accessibility to Grand Parkway, I-10 corridor
- Excellent diverse tenant mix
- Class A common area finishes
- Close proximity to four major hospital systems (Memorial Hermann, Houston Methodist, Texas Children's and St. Luke's)
- Covered patient drop off

[View Building Website](#)



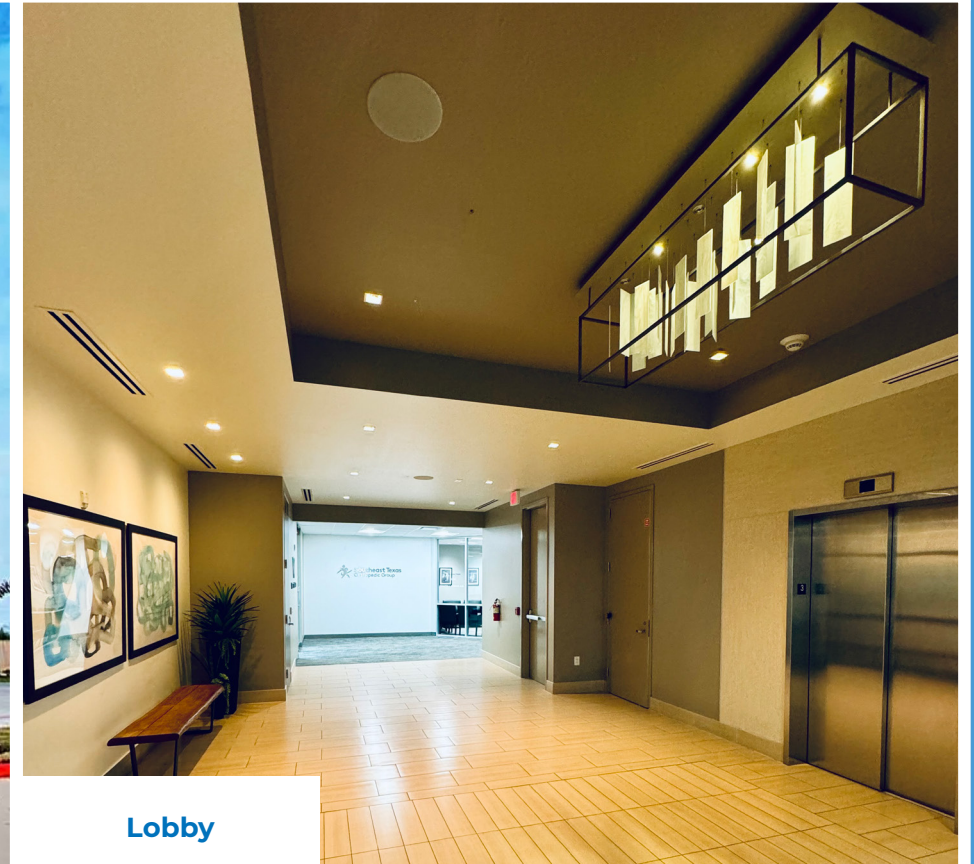
High-End Finishes



Katy Medical Plaza I



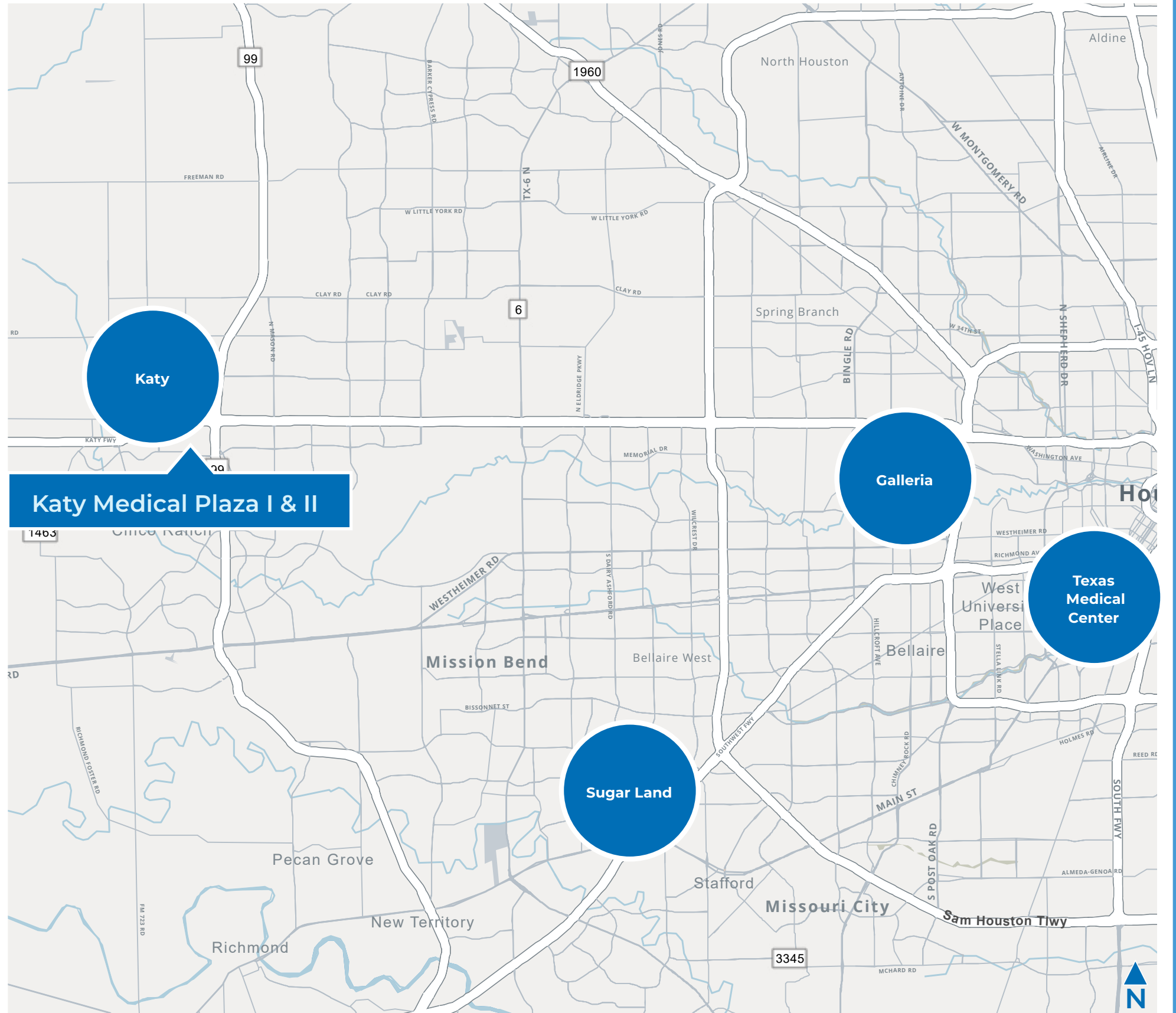
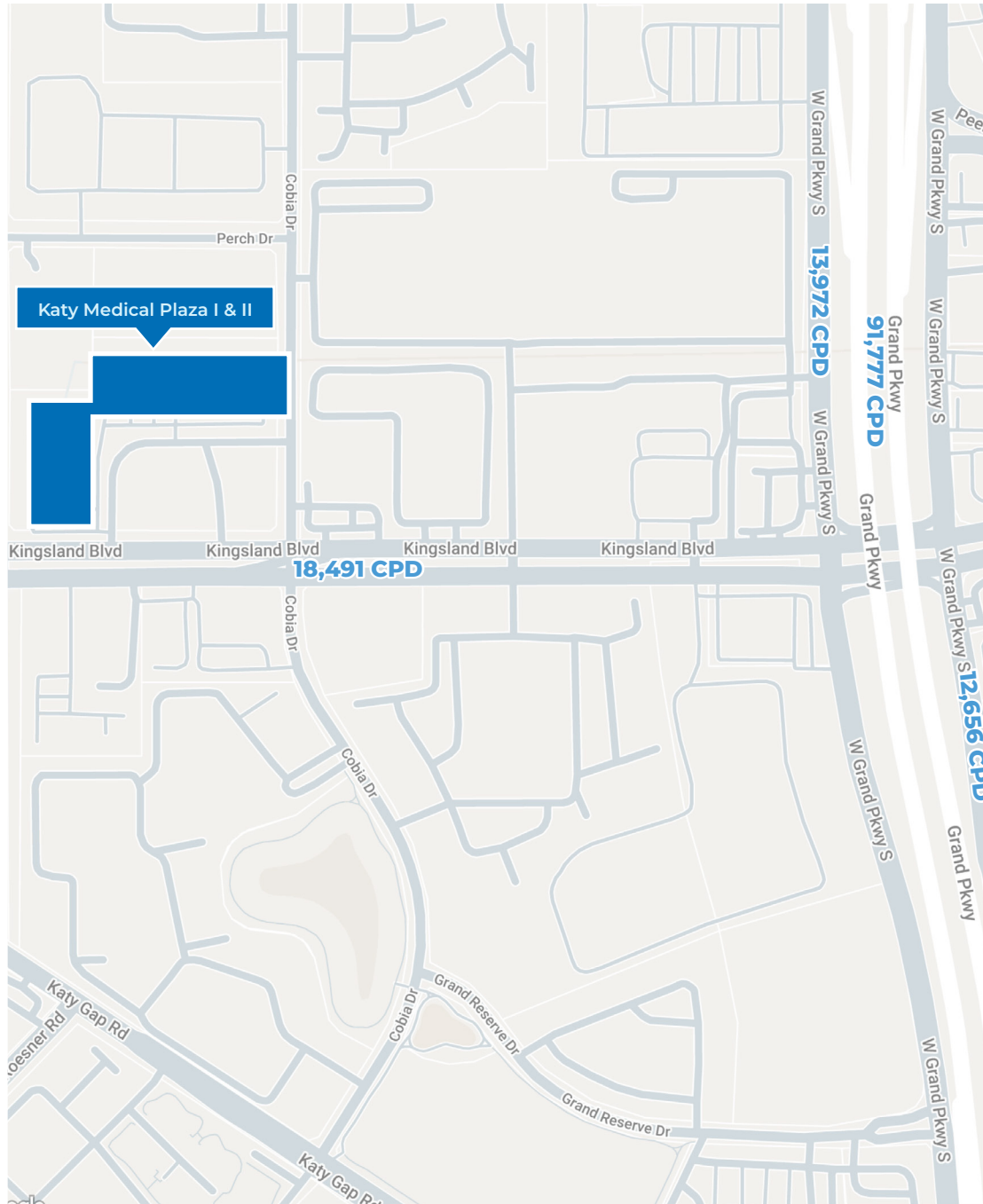
Katy Medical Plaza II



Lobby

Premier Location

Conveniently located in Katy with easy access to major through-ways.



Centralized in a Thriving Community

Katy Medical Plaza is within a short drive to four major hospital systems (Memorial Hermann, Houston Methodist, Texas Children's and St. Luke's). And surrounded by Houston's established and diverse communities. Katy residents are well-educated and earn higher incomes compared to the rest of the city. The area continues to experience growth, with new developments sprouting throughout the region.



Memorial Hermann Katy Hospital

Healthcare

62%	\$8k	81%
Private Insurance	Healthcare Spending	Doctor Visits in 2023

Employment

13%	15%	72%
Service Employment	Blue Collar Employment	White Collar Employment

Economics

36	\$124k
Median Age	Per Household Income

Population

112k	108k
Total population	Total Daytime Population

*Demographics is within 3 miles of the property

Katy Medical Plaza I & II

LEASING INFORMATION

Heinrich Cronje

832.408.4067

Heinrich.Cronje@transwestern.com



The information provided herein was obtained from sources believed reliable; however, Transwestern makes no guarantees, warranties or representations as to the completeness or accuracy thereof. The presentation of this property is submitted subject to errors, omissions, change of price or conditions, prior sale or lease, or withdrawal without notice. Copyright © 2024 Transwestern.