

226-228  
WEST 125TH ST  
NEW YORK, NY

joyce leslie 

  
**TOURO**  
UNIVERSITY  
College of  
Osteopathic Medicine  
New York School of  
Career & Applied Studies

TOURO  
UNIVERSITY

FLAGSHIP HARLEM RETAIL



# 226-228 WEST 125<sup>TH</sup> ST

Between Adam Clayton Powell & Frederick Douglas Blvd  
Flagship Harlem Retail

## PROPERTY INFORMATION:

**SIZE:** 10,000 SF Ground Floor  
10,000 SF Selling Second Floor  
10,000 SF Selling Lower Level

**FRONTAGE:** 50'

**CEILING HEIGHTS:** 11' Ground | 17' Second | 9' Lower

**ASKING RENT:** Upon Request

**POSSESSION:** Arranged

**TRANSPORTATION:** A C B D 2 3

### HIGHLIGHTS:

- Ground and Second Floors can be leased separately
- Excellent retail corridor
- Across the street from the world-famous Apollo Theater
- JD Sports & Chick-fil-A signed next door
- High foot traffic area in dense residential neighborhood
- Neighbors include: *Chick-fil-A, ALDO, Dave's Hot Chicken, White Castle, MAC, Planet Fitness, Easy Pickens, JD Sports, Champs Sports, GAP, Foot Locker, Gamestop, Portabella, KFC, Citibank, Carter's, GNC, Bank of America, McDonald's, FedEx Office, T-Mobile, Verizon, Old Navy, Rainbow, CVS, Starbucks, Blick, H&M, Marshall's, Dunkin', Santander, Whole Foods, Victoria Secret, TD Bank, Sugar Monk*



Map showing surrounding businesses and streets:

**Streets:** W. 127th Street, W. 126th Street, W. 125th Street, W. 124th Street, W. 123rd Street, W. 122nd Street, W. 121st Street

**Frederick Douglass Blvd** (Vertical)

**Adam Clayton Powell Jr. Blvd** (Vertical)

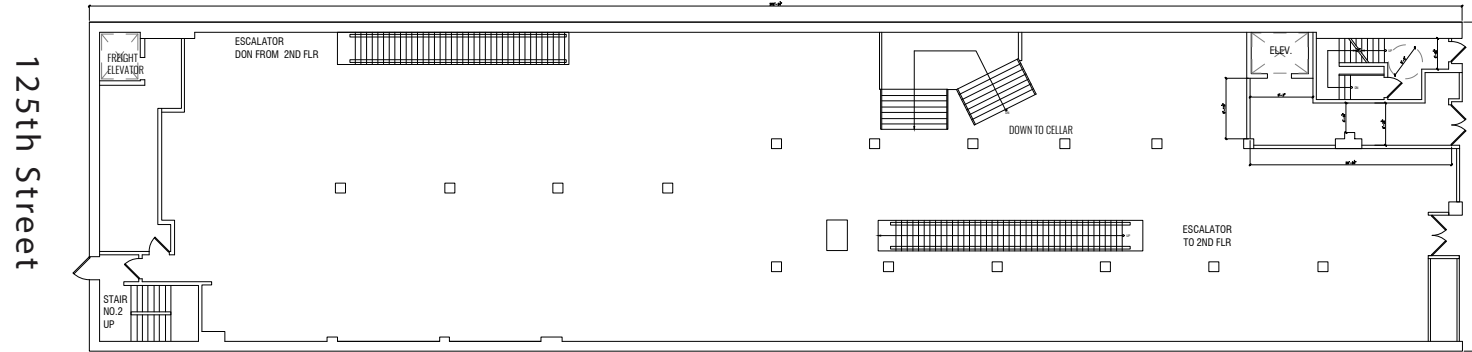
**Businesses:** MANNA'S, GOURMET & DELI, CARNAVAL SMOOTHIE, CANTINA TAQUERIA, COVE LOUNGE, CORNER SOCIAL, Party City, DSW, POPeYes, Party City, GNC, carter's, GNC, Bank of America, FedEx Office, KFC, citibank, Apollo, ALDO, Chick-fil-A, JD, White Castle, MAC, Foot Locker, kids foot Locker, GAP, CVS, OLD NAVY, Starbucks, Rainbow, Verizon, WHOLE FOODS MARKET, McDonald's, VICTORIA'S SECRET, TD Bank, H&M, Santander, Marshalls, DUNKIN', verizon, WHOLE FOODS MARKET, DELHI MASALA, A1 ASIAN FUSION, MOMMA ZEE'S, TEXAS CHICKEN & BURGERS, FANTA BOUTIQUE, NEW KING WOK, ALI DELI GROCERY, SOTTOCASA, ANGEL OF HARLEM, DUNKIN', NORTHERN LIGHTS MANSION, SHONDELLS, MASTERING PALACE, NYFD, aloft HOTELS, SUGAR MONK, SIDO GRILL, RED STAR, HARLEM SUPER PHARMACY

# 226-228 WEST 125<sup>TH</sup> ST

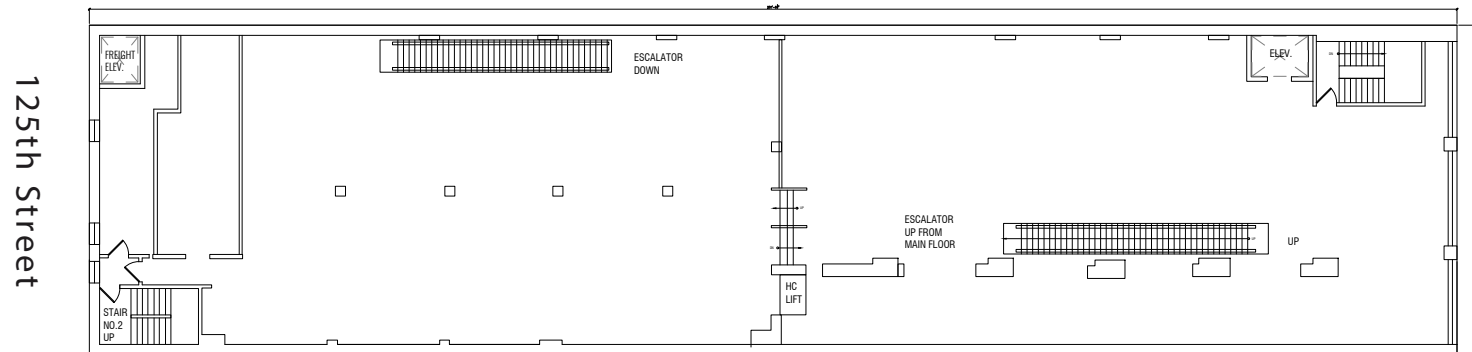
Between Adam Clayton Powell & Frederick Douglas Blvd  
Flagship Harlem Retail

## Floor Plans:

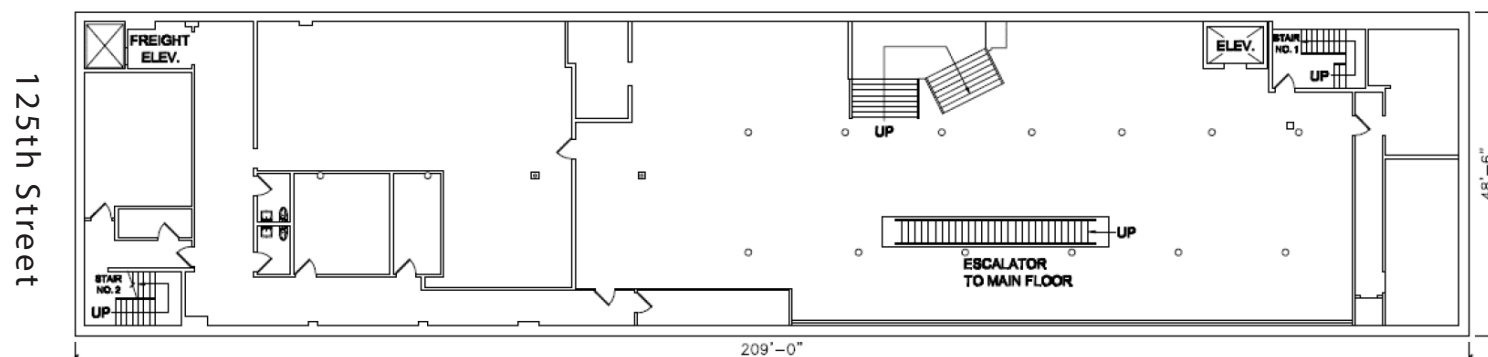
Ground Floor - 10,000 SF (49' x 202')



Selling Second Floor - 10,000 SF (49' x 202')



Selling Lower Level - 10,000 SF (49' x 202')



FOR MORE INFORMATION, PLEASE CONTACT:

**ALBERT MANOPLA**

212.380.8369

AManopla@ksrny.com

**JACK KHASKI**

917.355.0559

JackK@ksrny.com

**JACK HAMADANI**

718.415.0095

JHamadani@ksrny.com

**FREDDY SOUID**

917.968.0329

FSouid@ksrny.com



1385 Broadway, 22nd Floor

New York, NY 10018

212.417.9217

ksrny.com

All information supplied in this marketing presentation and/or flyer is from sources deemed reliable and is furnished subject to errors, omissions, modifications, removal of listings from sale/lease and to any listing condition. Any square footage, dimensions, floor plans and/or technical data set forth are approximations and are subject to further elaboration/confirmation.