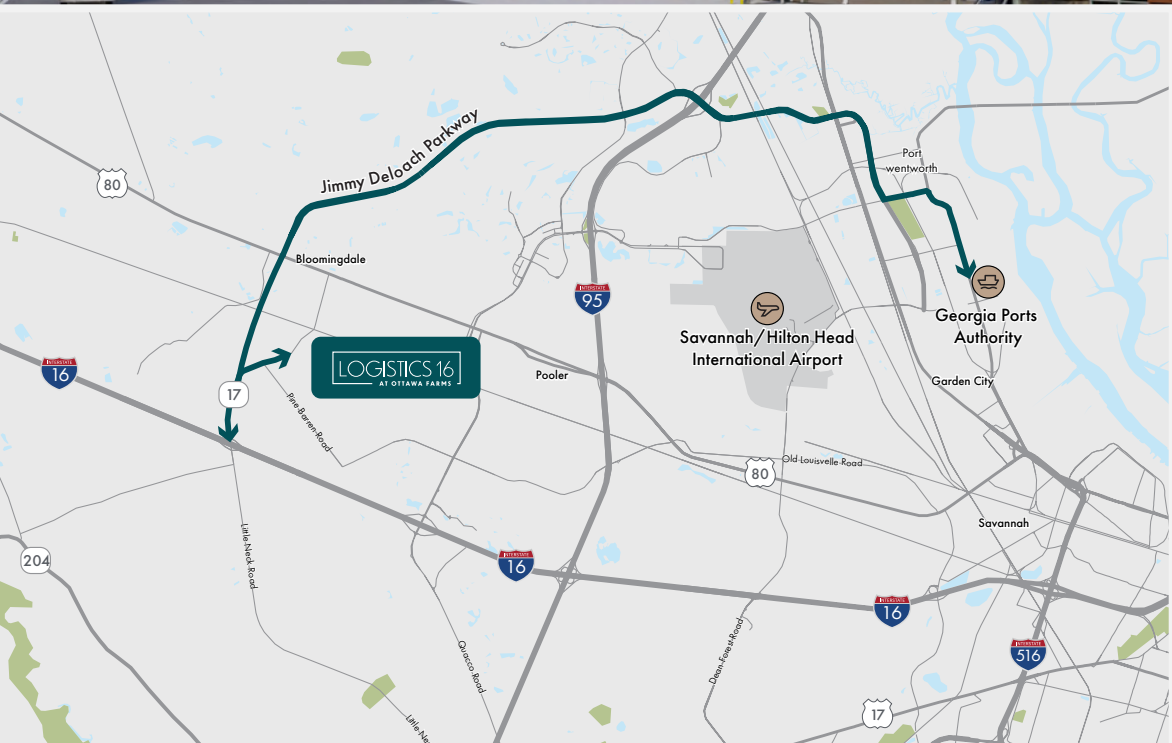


LOGISTICS 16

AT OTTAWA FARMS



- .75 MILES** TO JIMMY DELOACH PARKWAY
- 2 MILES** TO I-16
- 5 MILES** TO I-95
- 7.7 MILES** TO SAVANNAH INTERNATIONAL AIRPORT
- 12 MILES** TO THE GA PORTS AUTHORITY

FOR LEASE:
 156,290 SF IN BUILDING 100
 153,170 SF IN BUILDING 250



Jimmy Deloach Parkway

Bloomington Road

WAREHOUSE #100
AVAILABLE
156,290 SF

LEASED

LEASED
WAREHOUSE #200

AVAILABLE
153,170 SF

LEASED

PROPOSED
WALLER
HOMESTEAD

AREA LIFT STATION
(CITY OF BLOOMINGDALE)

TRACT 2
P&B 100, PG 158
N/F: COLUMBIA
WATERWORKS DISTRICTS
P/R: 8004 0102

PARCEL C-2
P&B 50, PG 122
N/F: HIGHLANDS HEALTH CORPORATION
P/R: 8004 0101

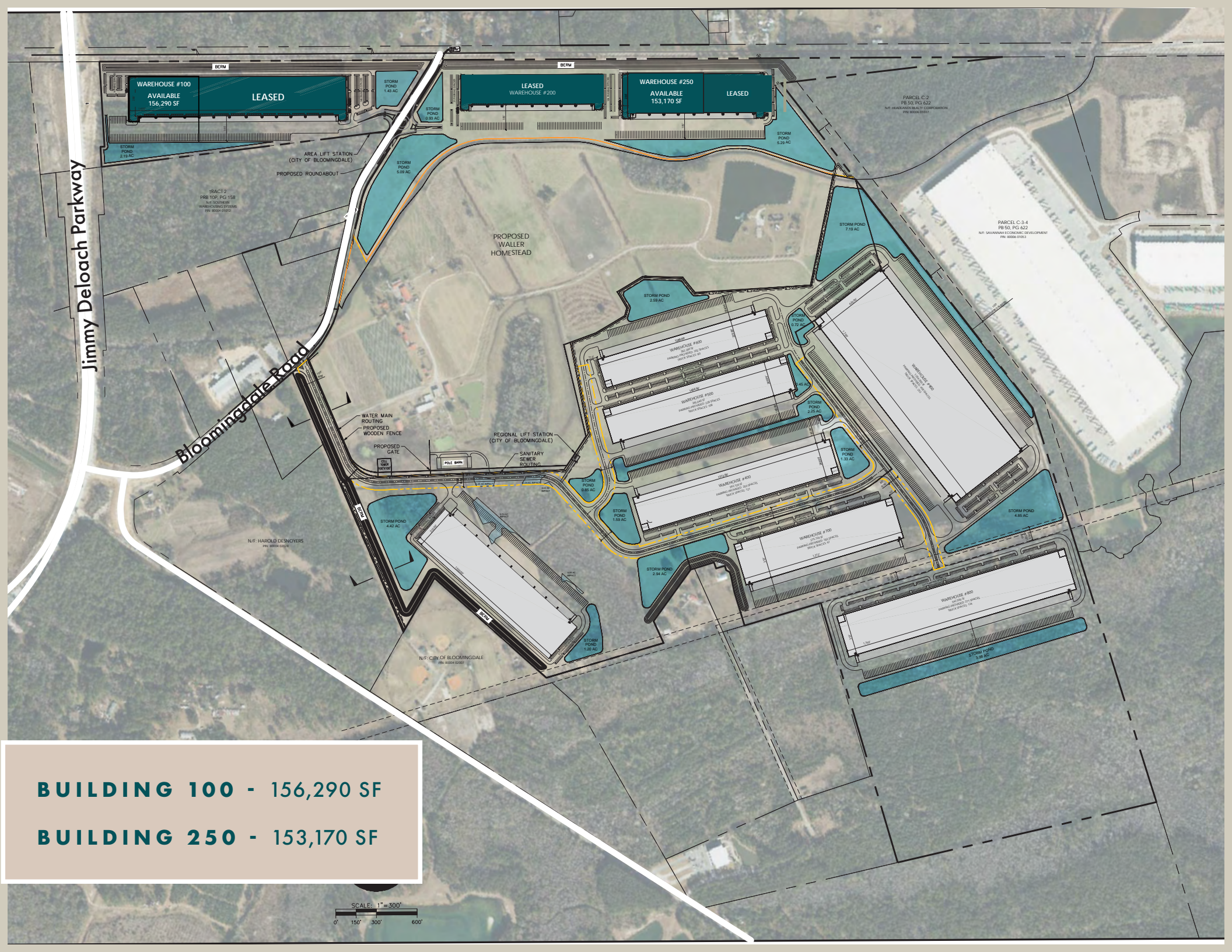
PARCEL C-3-4
P&B 50, PG 622
N/F: SAKARAH ECONOMIC DEVELOPMENT
P/R: 8004 0103

N/F: HAROLD DEWYERS
P/R: 8004 0028

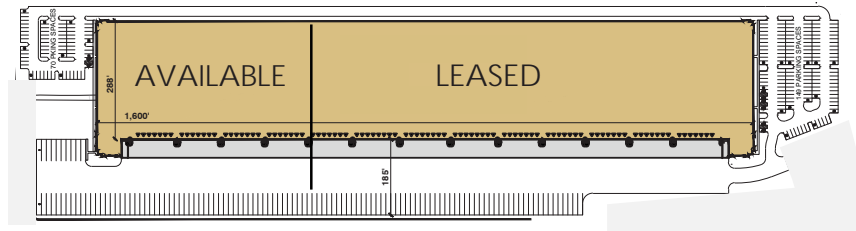
N/F: CITY OF BLOOMINGDALE
P/R: 8004 0020

BUILDING 100 - 156,290 SF
BUILDING 250 - 153,170 SF

SCALE: 1" = 300'
0' 150' 300' 600'



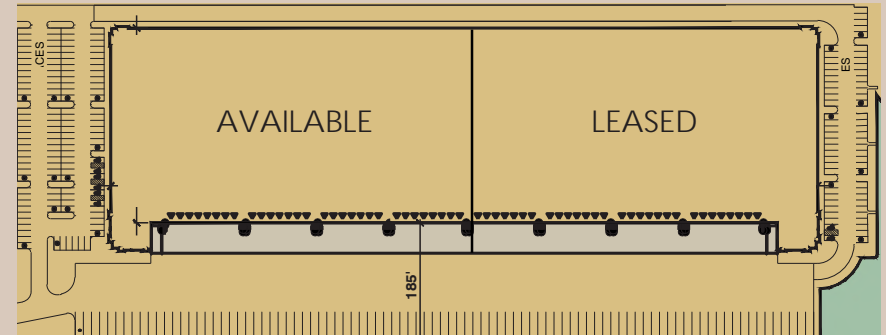
Property Specifications/ Site Plans



BUILDING 100

601 Bloomingdale Road, Bloomingdale, GA 31302

156,290 SF Available	Mechanically attached 45 mil. Reinforced TPO single-ply membrane with LTTR-15 Insulation
2,540 SF spec office underway	47" canopy at dock doors
288' deep x 1,600' long	One (1) 12' x 14' drive-in door (motorized) Fourteen (14) 40,000 lb mechanical pit levelers Twenty-nine (29) 9' x 10' manual dock doors equipped with deck bumpers and 2" guards
36' clear height	ESFR K-17 sprinkler system
185' deep truck court	Roof exhaust fans providing 1.5 air changes
66 trailer spaces	2,400 Amp Main Switchgear
70 car spaces	LED building and pole site lighting
7" thick 4,000 psi concrete unreinforced slab	Gray tube steel columns, white roof deck
Interior bays: 53'-4" x 46'; Dock bays: 53'-4" x 60'	
Available Now	



BUILDING 250

610 Bloomingdale Road, Bloomingdale, GA 31302

153,170 SF Available
2,540 SF spec office complete
288' deep x 522' long
32' clear height
185' deep truck court
43 trailer spaces
68 car spaces
6" thick 4,000 psi concrete unreinforced slab
Interior bays: 53'-4" x 57'; Dock bays: 53'-4" x 60'
Gray tube steel columns, white roof deck
Mechanically attached 45 mil. Reinforced TPO single-ply membrane with LTTR-15 Insulation
47" canopy at dock doors
Three (3) HVLS fans in the staging bay
Six (6) battery charging stations
One (1) 12' x 14' drive-in door (motorized) Nineteen (19) 40,000 lb mechanical pit levelers Dock lights and barrel fans at every dock door
Thirty (30) dock doors
ESFR K-17 sprinkler system
Roof exhaust fans providing 1.5 air changes
2,400 Amp Main Switchgear
LED building and pole site lighting
Available Now

LOGISTICS 16 AT OTTAWA FARMS



Contact

Bennett Rudder, SIOR
 W 912.250.4595
 E bennett.rudder@jll.com

Chris Tomasulo, SIOR
 W 404.995.2462
 E chris.tomasulo@jll.com

Ryan Hoyt, SIOR
 W 404.995.2090
 E ryan.hoyt@jll.com

Lindsey Wilmot
 W 912.663.9394
 E lindsey.wilmot@jll.com

