

FOR LEASE

2,800± SF OFFICE
WITH 1 AC YARD

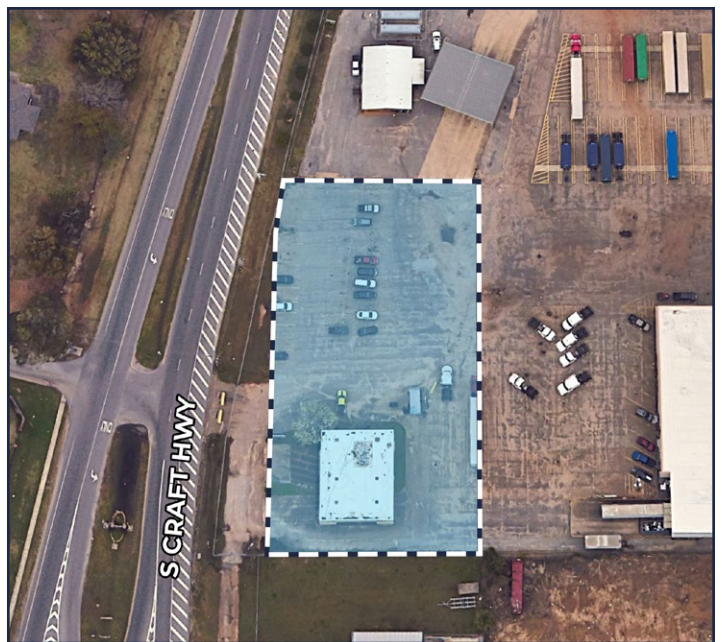
1808 S. Craft Hwy. | Chickasaw



PROPERTY DESCRIPTION:

- 2,800± SF office with 1 AC yard
- Excellent access to Alabama State Docks
- Located in a highly industrial area
- Conveniently located to I-165 and I-65
- More yard available if needed

LEASE RATE: \$5,000/MONTH



Tommy Gleason, CCIM
251.379.8285 | tgleason@cre-mobile.com



**CRE
MOBILE**
CRE-MOBILE.COM



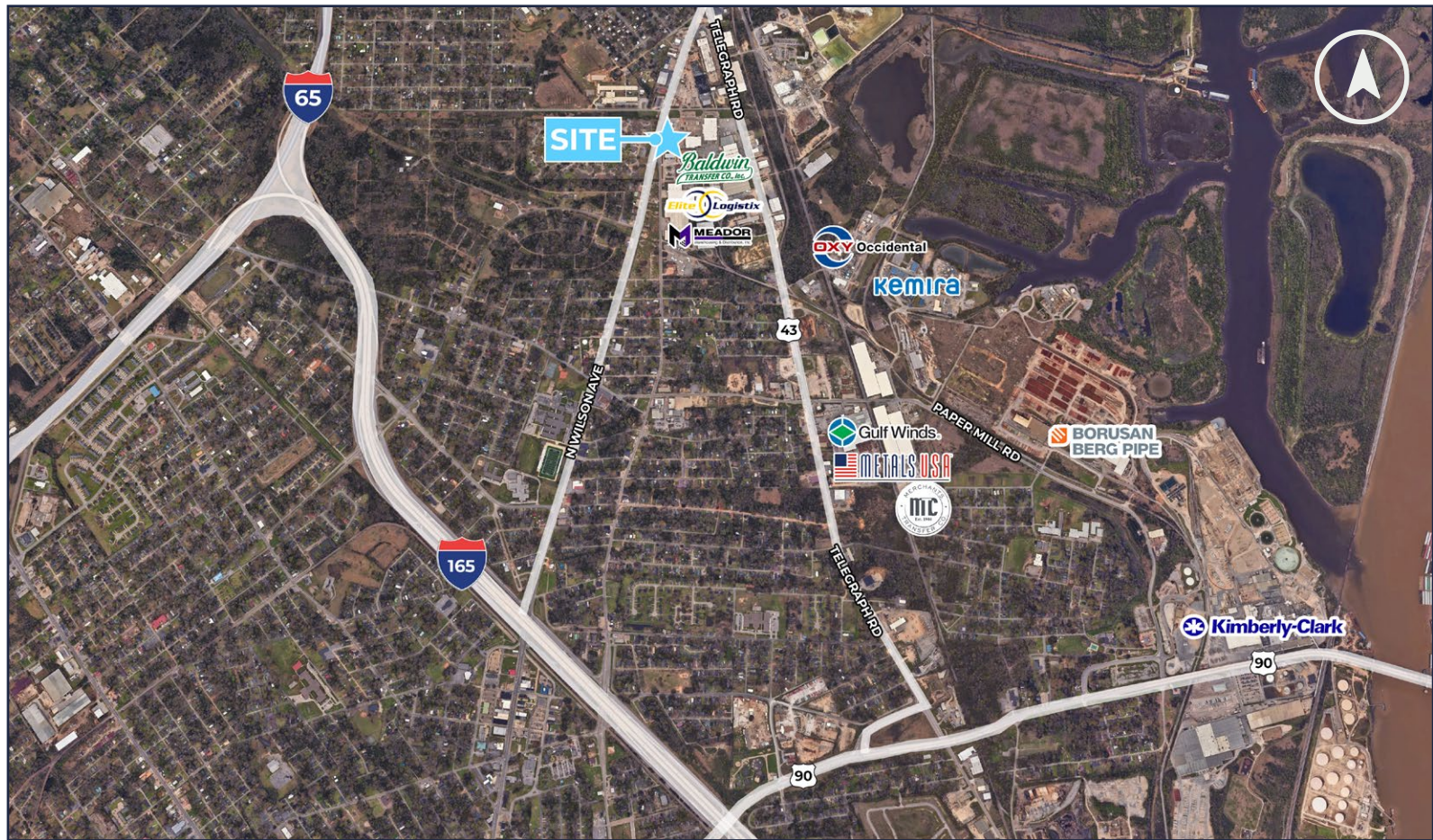
DISTANCES TO NOTABLE LOCATIONS

I-165	1.5 miles ±
I-65	2.0 miles ±
I-10	7.5 miles ±
Aeroplex at Brookley	6.5 miles ±
Port of Mobile	7 miles ±
Mississippi State Line	32 miles ±

*Distance measured as driving distance

NO WARRANTY OR REPRESENTATION, EXPRESS OR IMPLIED, IS MADE AS TO THE ACCURACY OF THE INFORMATION CONTAINED HEREIN, AND THE SAME IS SUBMITTED SUBJECT TO ERRORS, OMISSIONS, CHANGE OF PRICE, RENTAL OR OTHER CONDITIONS, PRIOR SALE, LEASE OR FINANCING, OR WITHDRAWAL WITHOUT NOTICE, AND OF ANY SPECIAL LISTING CONDITIONS IMPOSED BY OUR PRINCIPALS. NO WARRANTIES OR REPRESENTATIONS ARE MADE AS TO THE CONDITION OF THE PROPERTY NOR ANY HAZARDS CONTAINED THEREIN ARE ANY TO BE IMPLIED.





NO WARRANTY OR REPRESENTATION, EXPRESS OR IMPLIED, IS MADE AS TO THE ACCURACY OF THE INFORMATION CONTAINED HEREIN, AND THE SAME IS SUBMITTED SUBJECT TO ERRORS, OMISSIONS, CHANGE OF PRICE, RENTAL OR OTHER CONDITIONS, PRIOR SALE, LEASE OR FINANCING, OR WITHDRAWAL WITHOUT NOTICE, AND OF ANY SPECIAL LISTING CONDITIONS IMPOSED BY OUR PRINCIPALS. NO WARRANTIES OR REPRESENTATIONS ARE MADE AS TO THE CONDITION OF THE PROPERTY NOR ANY HAZARDS CONTAINED THEREIN ARE ANY TO BE IMPLIED.