

# For Lease

## Powerline Park

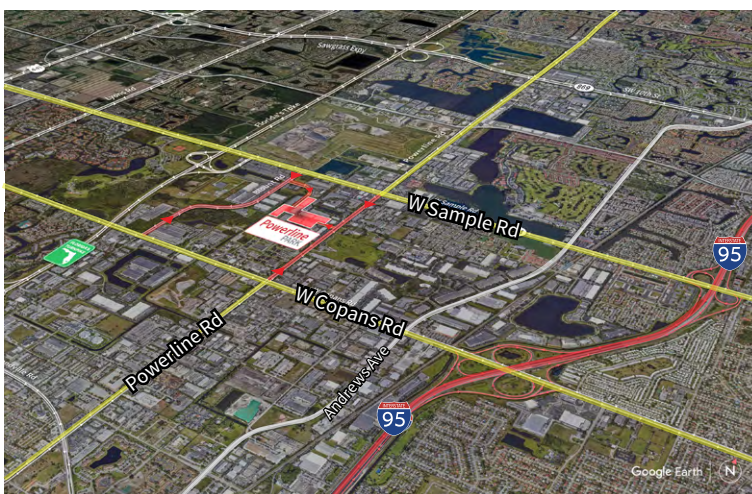
3034 NW 25<sup>th</sup> Avenue  
Pompano Beach, FL 33069



Industrial Space For Lease  
**3,180 SF**

## Powerline Park

3034 NW 25<sup>th</sup> Avenue, Pompano Beach, FL 33069



### Location

- Easy access off Sample Road and Powerline Road
- Excellent access to I-95 and the Florida Turnpike
- Equidistant to Fort Lauderdale/Hollywood International Airport and Palm Beach International Airport

### Space Features

- 3,180 SF total
- 532 SF of office
- 2,648 SF of warehouse
- 16' clear height
- One (1) grade level door
- Parking ratio: 2.0/1,000 sf
- Available 2/1/2024



© 2023 Jones Lang LaSalle IP, Inc.

**Yuri Quispe**

D +1 954 233 3462

M +1 772 201 5305

yuri.quispe@jll.com

**Peter Sheridan**

D +1 954 653 3235

M +1 954 439 4941

peter.sheridan@jll.com

**Peter Johnston**

D +1 954 233 3429

M +1 954 980 3224

peter.johnston1@jll.com



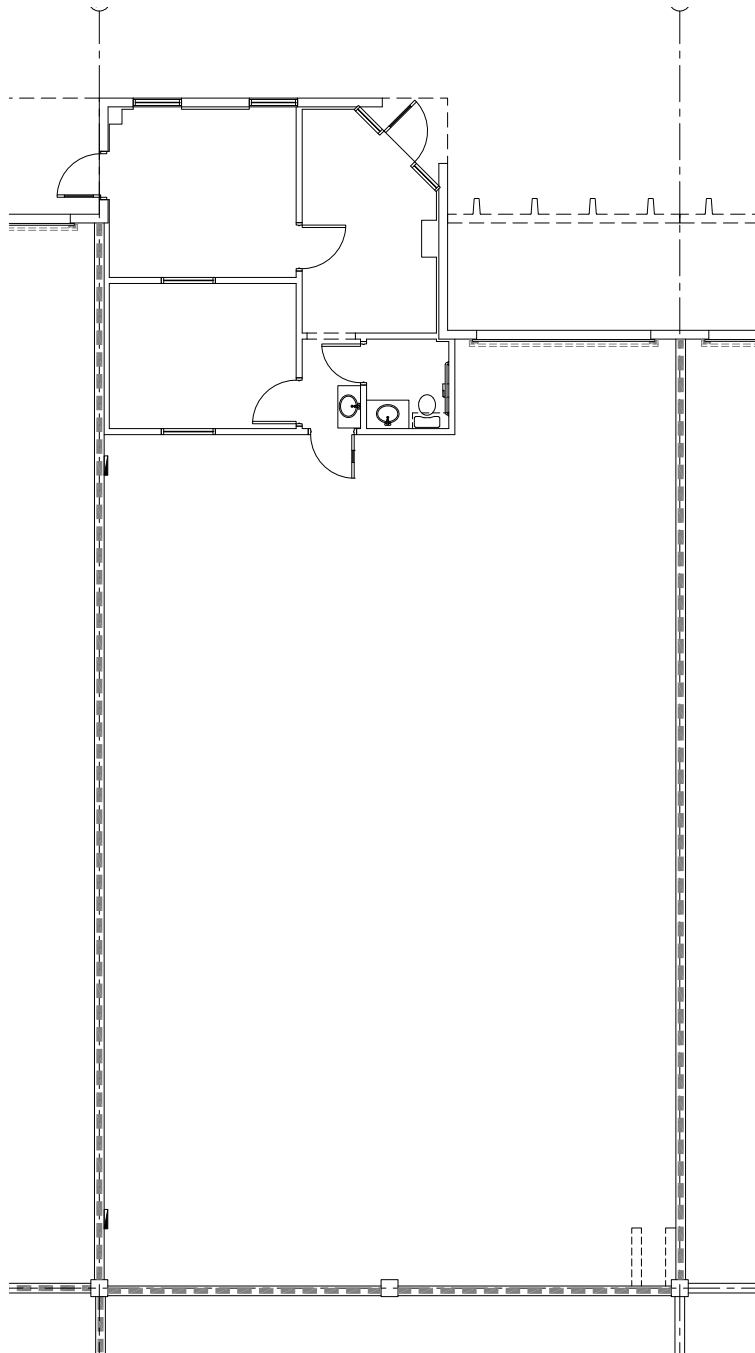
# For Lease

## Powerline Park

3034 NW 25<sup>th</sup> Avenue, Pompano Beach, FL 33069

### Powerline Park Floor Plan - Suite 3

Total: 3,180 SF  
Office: 532 SF  
Warehouse: 2,648 SF





## Powerline Park Site Plan

■ - Subject Property



Building	Suite	Total (SF)	Office (SF)	Warehouse (SF)	Loading	Clear Height	Available Date
7	3	3,180	532	2,648	1 G	16'	2/1/2024

