

3,960 SF  
FOR SUBLEASE

# 350 MAIN STREET

MALDEN, MA 02148





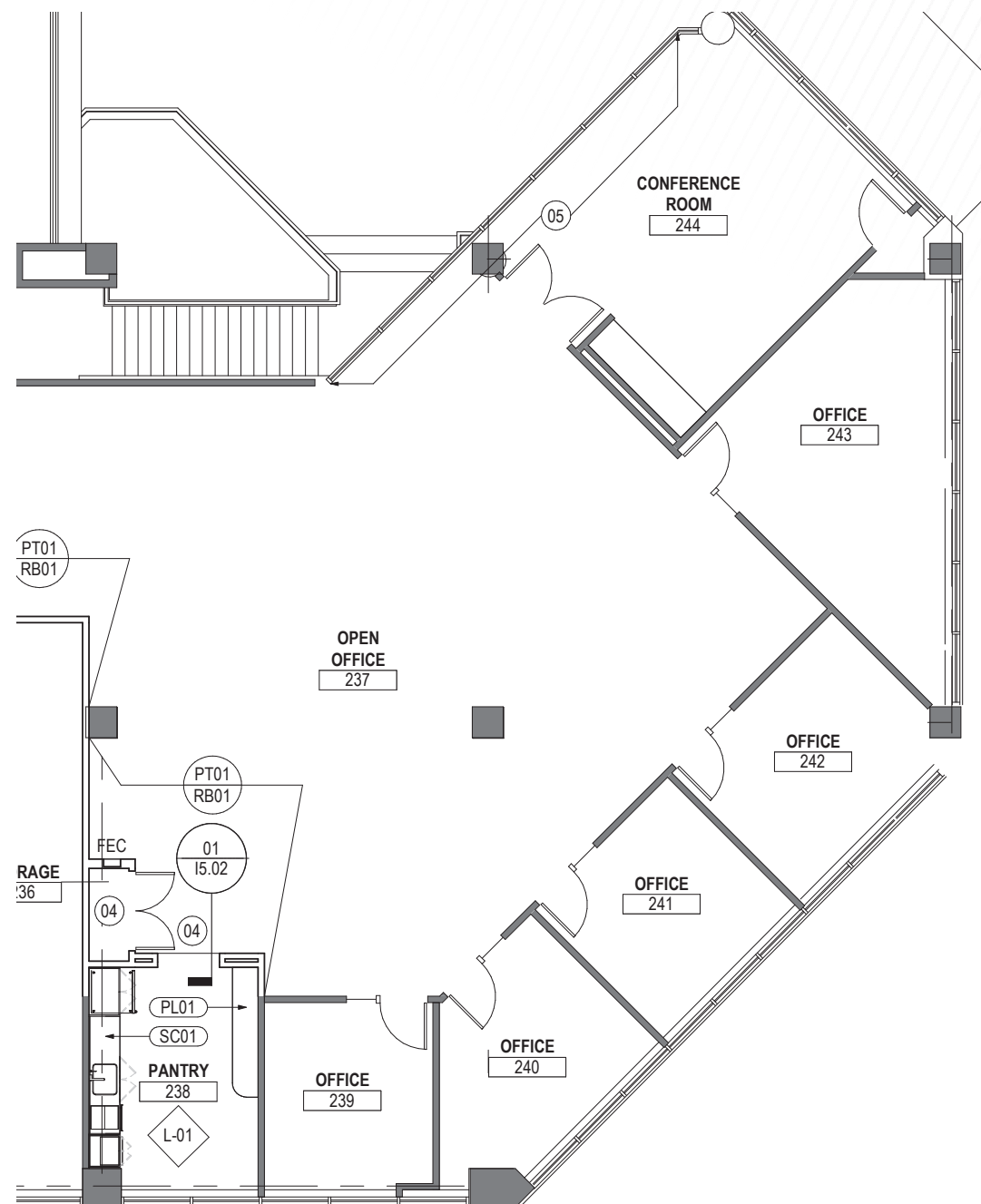


## FLOOR PLAN

2nd Floor

3,960 SF Available for Sublease

**350  
MAIN STREET**  
MALDEN, MA 02148



## SUBLEASE HIGHLIGHTS

- Term through December 31, 2028
- 3,960 SF available on the 2nd floor
- Newly built-out space
- Café & fitness center in the building
- Walking distance to Orange Line
- 3,960 SF available on the 2nd floor



## CONTACTS:

**Scott Gredler**  
Executive Managing Director  
+1 617 204 5975  
scott.gredler@cushwake.com

**Jim Murphy**  
Director  
+1 617 204 4168  
jim.r.murphy@cushwake.com







**350  
MAIN STREET**  
MALDEN, MA 02148



## LOCATION

## CONTACTS:

### Scott Gredler

Executive Managing Director  
+1 617 204 5975  
scott.gredler@cushwake.com

### Jim Murphy

Director  
+1 617 204 4168  
jim.r.murphy@cushwake.com

125 High Street  
Boston, MA 02110  
main +1 617 330 6966  
fax +1 617 279 4556  
cushmanwakefield.com



**CUSHMAN &  
WAKEFIELD**