

PROFESSIONAL OFFICE BUILDING FOR SALE/LEASE

345 Route 202/206 Bedminster, NJ

Somerset County



PROPERTY DESCRIPTION

- 2,500 SF Free-standing Professional Office Building
- Private Offices, Conference Room, Bull Pen Area
- Two Baths & Kitchenette
- Abundant Off-Street Parking
- Former Real Estate Office
- Located in the VN (Village Neighborhood Zone) with Multiple Permitted Principal Uses: Retail Sales, Medical Offices, Restaurants, Banks
- High Visibility/Traffic Count
- Offered For Sale: \$599,000.
- Offered For Lease: \$16/SF NNN



Timothy P. Deluccia

Broker Associate

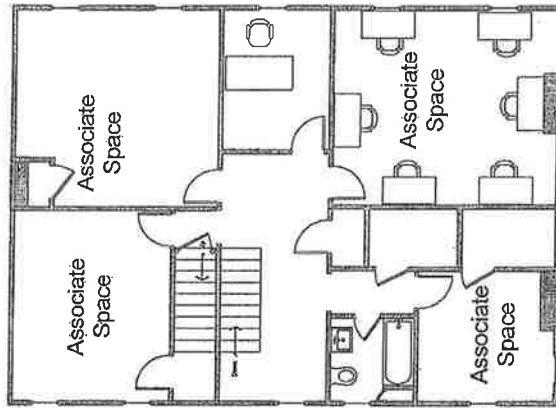
908-938-6405

tim@delucciacommercialgroup.com

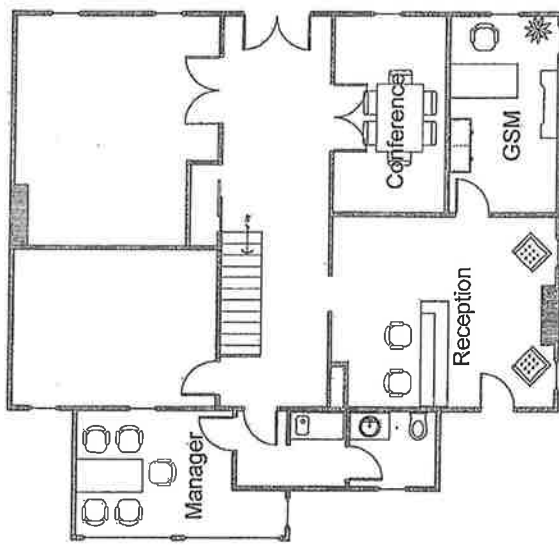
Commercial Sales & Leasing

BERKSHIRE
HATHAWAY
HOMESERVICES | FOX & ROACH,
REALTORSSM

COMMERCIAL DIVISION



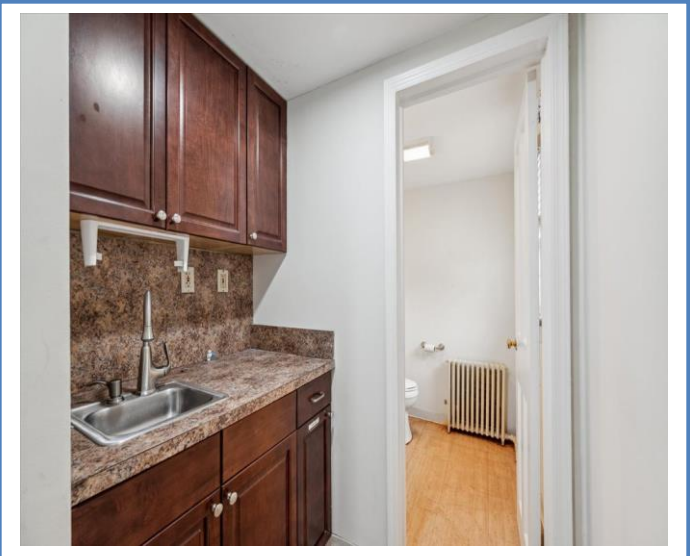
Second Floor



First Floor

Bedminster, NJ	
Weichert Realtors	TKD
12/7/2015	

345 Route 202 Bedminster



345 Route 202 Bedminster

