



FORMER RITE AID

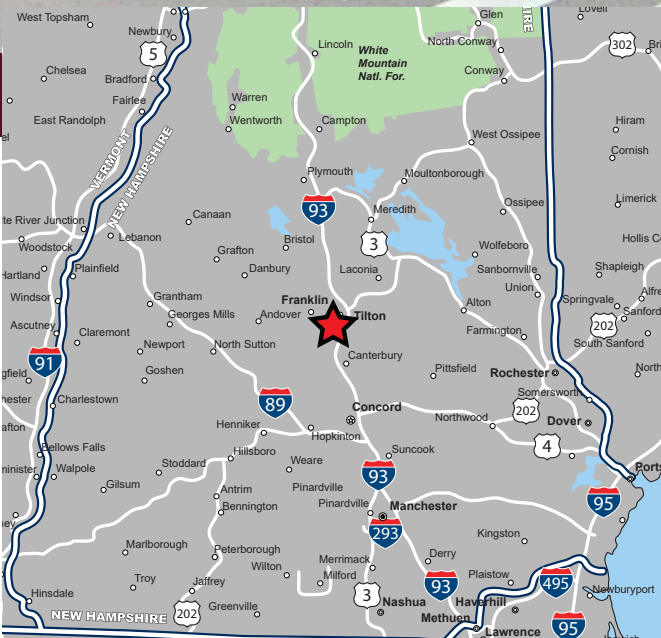
951 Central Street (Route 3) - Franklin, New Hampshire



AVAILABLE FOR SALE OR LEASE

PROPERTY HIGHLIGHTS

- » 11,180 SF Available for Sale or Lease (Subdividable)
- » 1.78 Acre Site
- » Freestanding Building Sharing Fully Signalized Access with Hannaford
- » Existing Drive-Thru Available
- » Pylon Signage Available
- » Multiple Uses Allowed
- » Excellent Access and Visibility

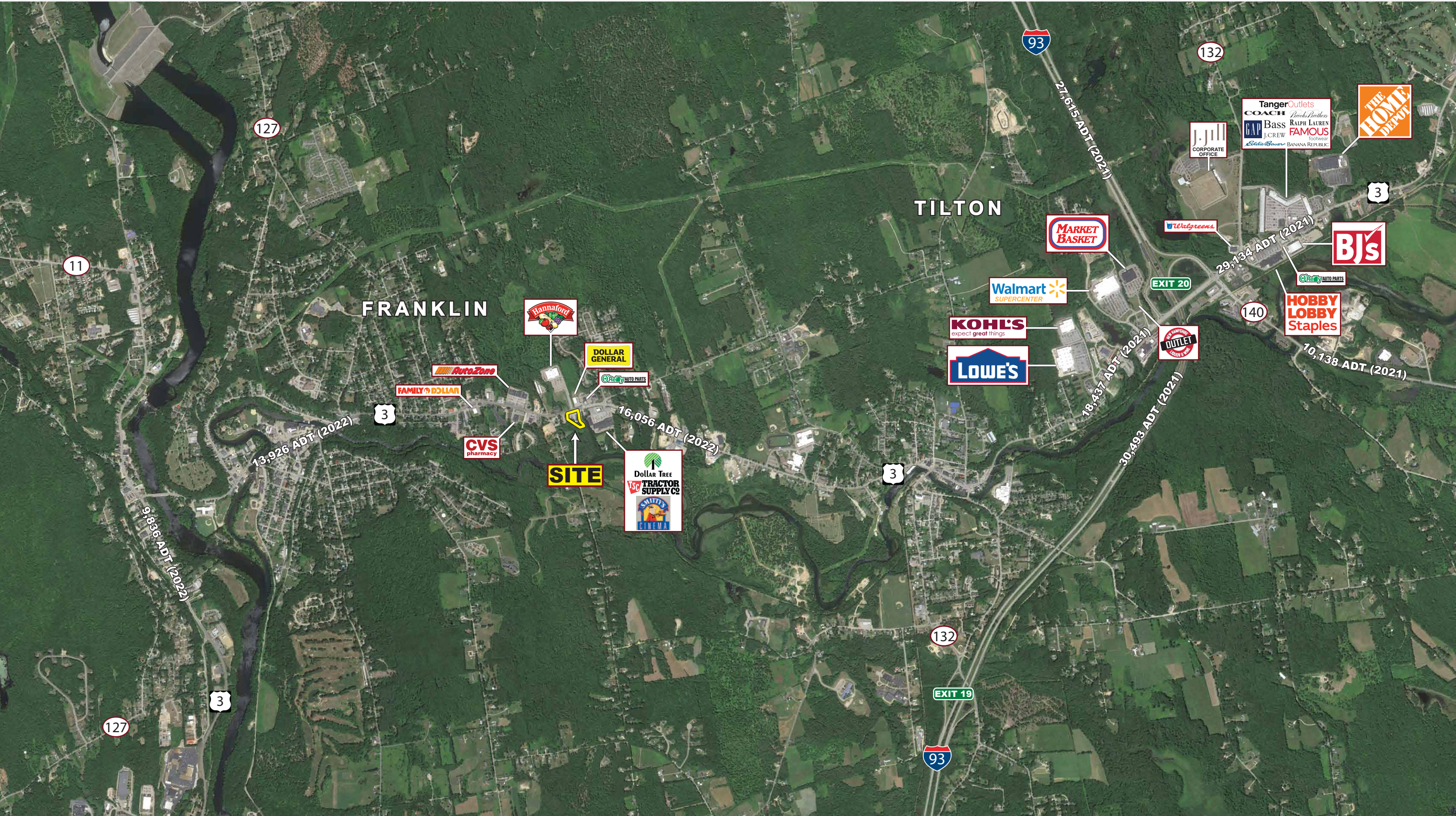


FORMER RITE AID

951 Central Street (Route 3) - Franklin, New Hampshire



EASTERN
RETAIL PROPERTIES





PROPERTY INFORMATION

Available Space 11,180 SF
 Land Size 1.78 Acres
 Parking 57 Spaces
 Traffic Count 16,056 ADT

DEMOGRAPHICS (2023 Est.)

Radius	Population	Med. HH Inc.
3 mile	14,316	\$75,156
5 mile	19,273	\$79,810
7 mile	25,399	\$82,844
10 mile	45,854	\$82,490



Former Rite Aid - 951 Central Street (Route 3), Franklin, New Hampshire



FOR MORE INFORMATION CONTACT:

Andrew Bonica

781.849.9011

abonica@easternretail.com

Tommy Landry

781.849.9015

tlandry@easternretail.com

P 781.849.9010 + F 781.849.9050 + www.easternretail.com + 25 Braintree Hill Office Park, Suite 305 + Braintree, MA 02184

The information above has been obtained from sources believed reliable. While we do not doubt its accuracy, we have not verified it and make no guarantee, warranty or representation about it. It is your responsibility to independently confirm its accuracy and completeness. Any projections, opinions, assumptions or estimates used are for example only and do not represent the current or future performance of the property. The value of this transaction to you depends on tax and other factors, which should be evaluated by your tax and financial advisors. You and your advisors should conduct a careful, independent investigation of the property to determine to your satisfaction, the suitability of the property for your needs.