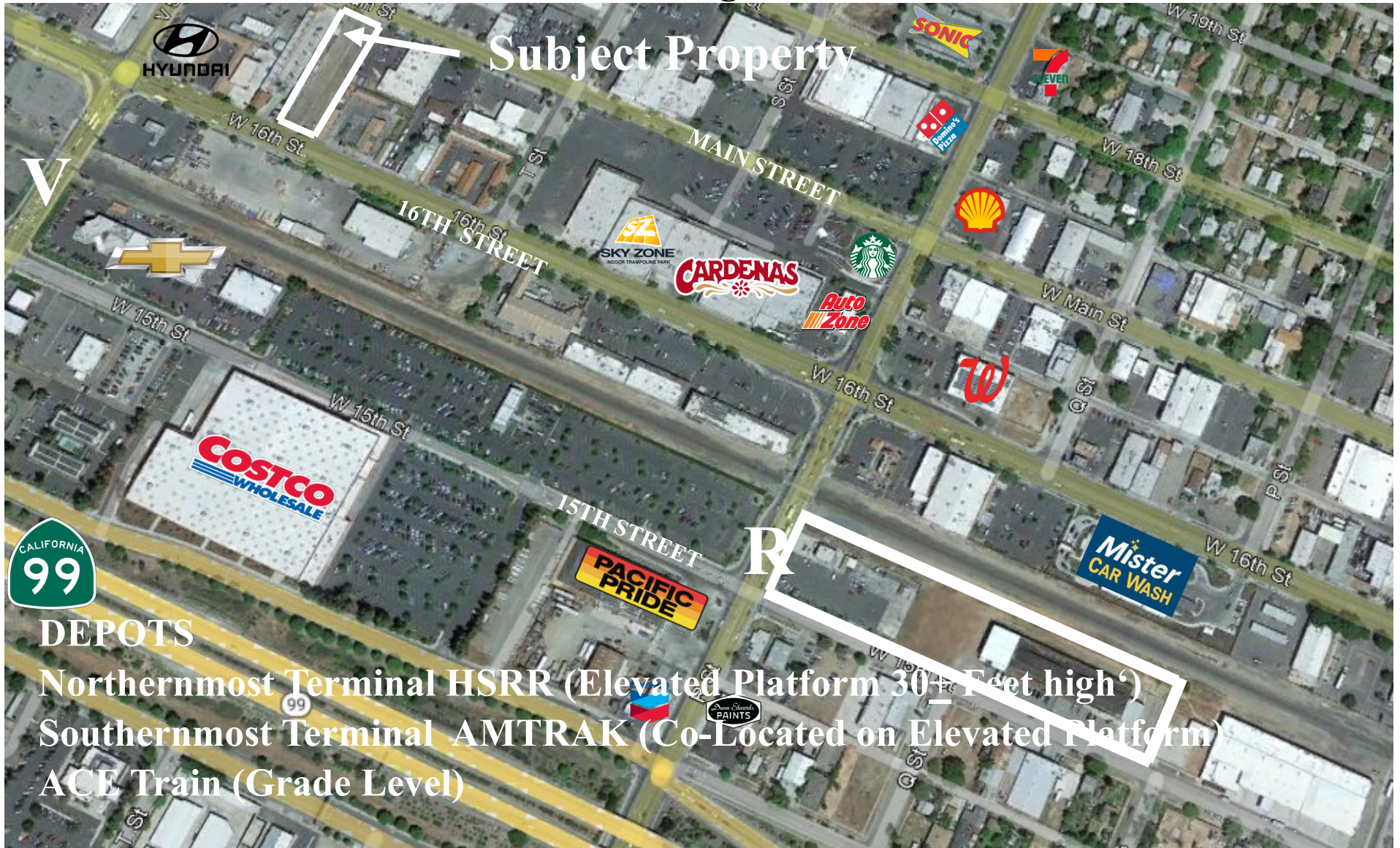


FOR LEASE 26,080 SF Paved & Fenced Parcel

Has 2 Street Frontages - -1400 W. MAIN STREET & 1401 W. 16th STREET

North 1/2 Zoned C-G General Commercial

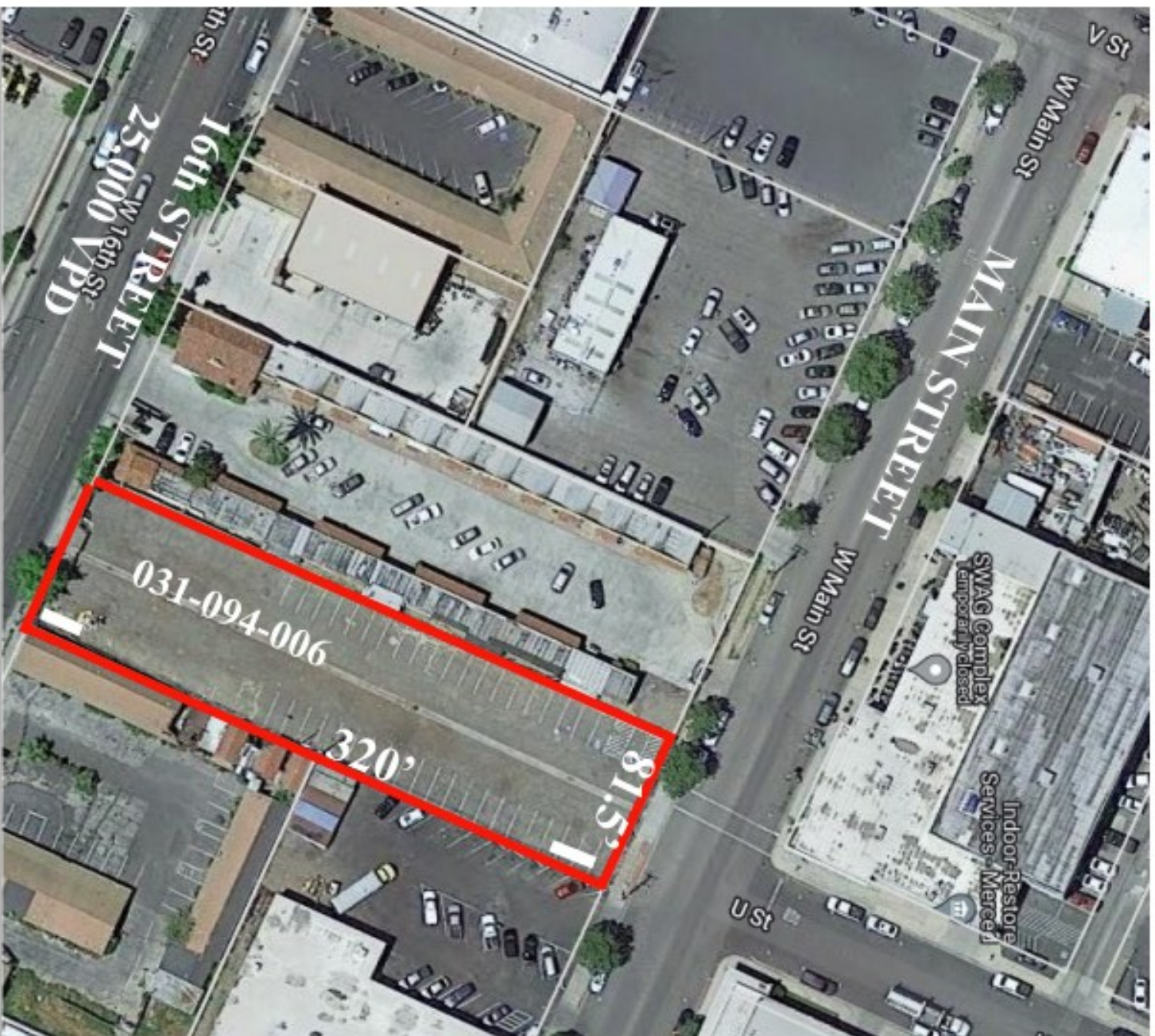
South 1/2 Zoned C-T Commercial Thoroughfare



FOR LEASE

26,080 SF Paved & Fenced Lot

Fronting both Main & 16th Streets



Depiction of Potential Locations of 3 Rail Depots

