

**BUILDING 3**  
4201 LAKE BOONE TRAIL  
RALEIGH, NC



**MEDICAL OFFICE SPACE FOR LEASE | RENTAL RATE: CALL FOR PRICING**

**AVAILABILITIES**

SUITE	SF	AVAILABLE	NOTES
001/005	6,150 SF	5/1/2026	
004	4,196 SF	8/1/2026	
102	1,594 SF	1/1/27	
107	1,319 SF	Immediately	

**PROPERTY HIGHLIGHTS**

- >> Three-story, 48,112 SF medical office building with a gurney-sized elevator
- >> Directly across the street from UNC/Rex Hospital, one of the top-ranking hospitals in the nation
- >> Amenity-rich location within walking distance to restaurants and retail including Marketplace at Lake Boone and Lake Boone Shopping Center
- >> Strategically situated between I-40 and I-440 with convenient access to Downtown Raleigh, Durham, Cary and RTP



**REXWOODS MEDICAL PARK**  
MORE INFORMATION  
[www.rexwoodsraleigh.com](http://www.rexwoodsraleigh.com)

Sam DiFranco Jr., CCIM, SIOR  
919-604-2137  
sdifrancojr@richcommercialrealty.com

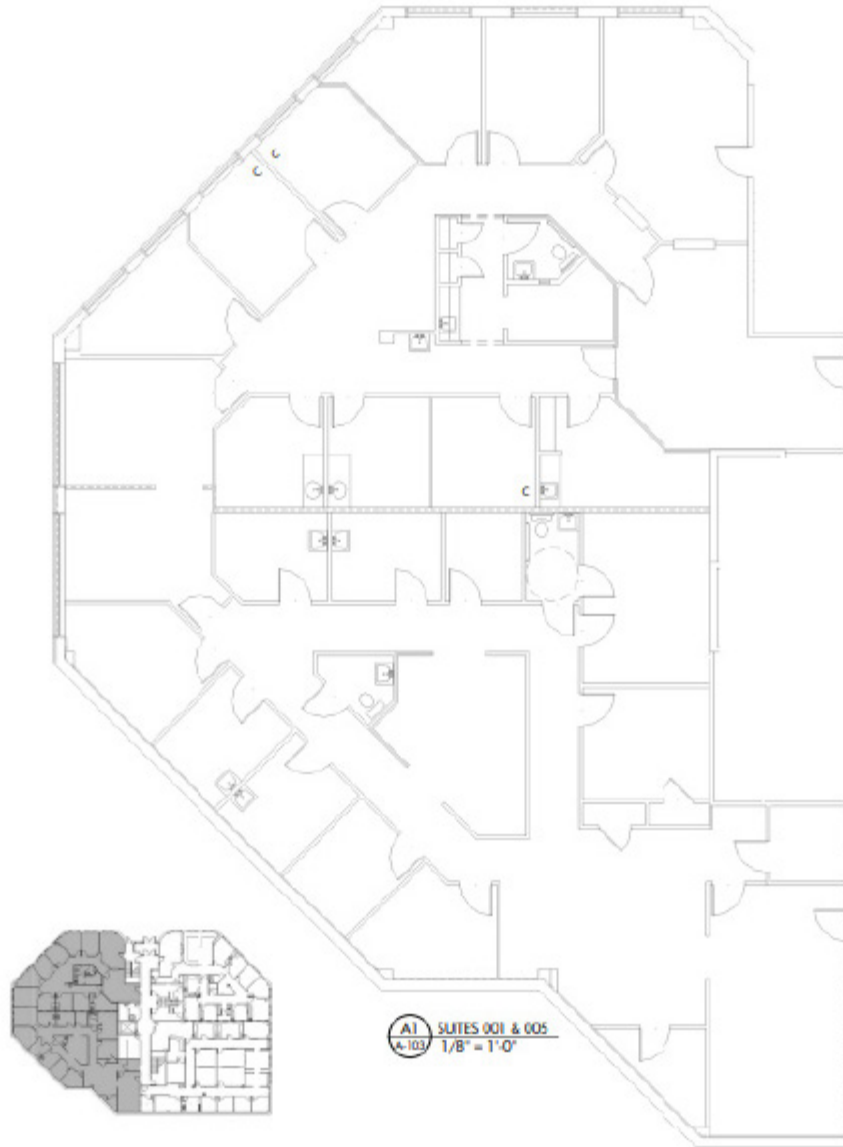
Dylan Heafner, CCIM, SIOR  
919-618-3026  
dheafner@richcommercialrealty.com

Conley Kenney Moretz  
757-817-1348  
cmoretz@richcommercialrealty.com

# BUILDING 3

4201 LAKE BOONE TRAIL | RALEIGH, NC

## Suites 001 & 005 | 6,150 SF

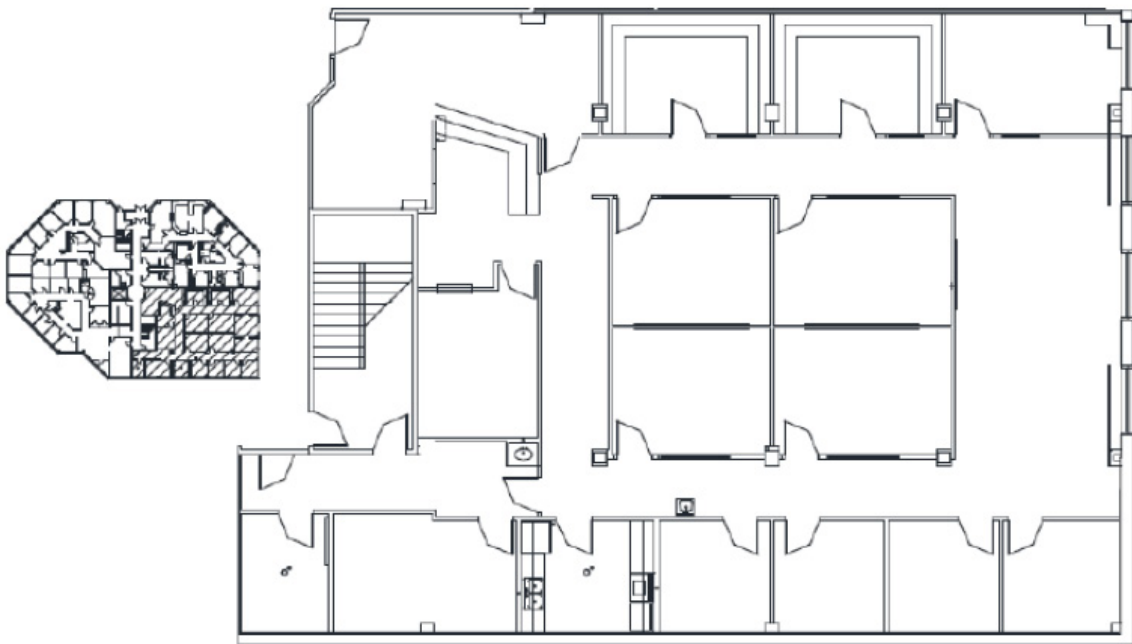


Disclaimer: The above floor plan is not to scale. The available space shown is believed to be correct but is subject to change.

# BUILDING 3

4201 LAKE BOONE TRAIL | RALEIGH, NC

## Suites 004 | 4,196 SF

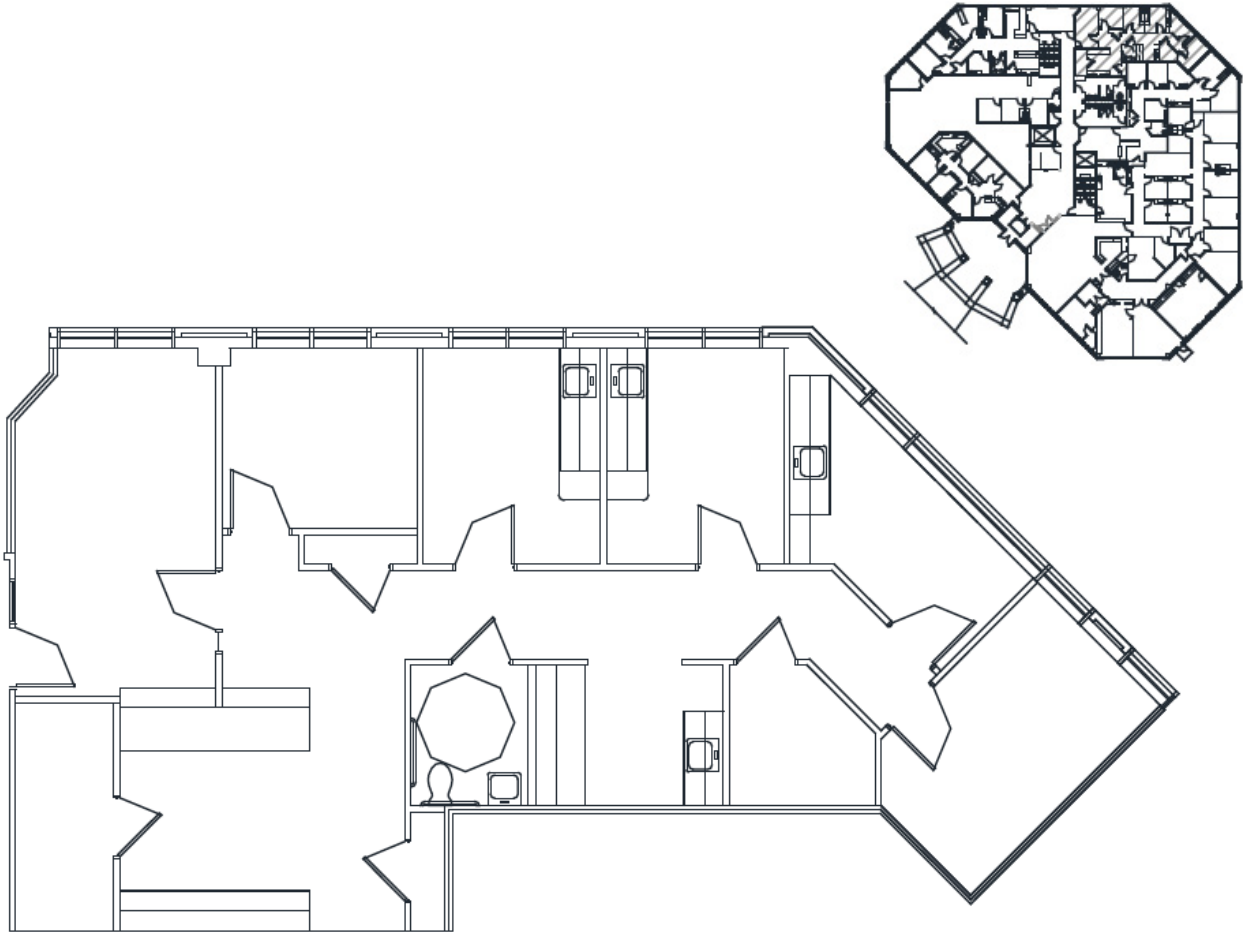


Disclaimer: The above floor plan is not to scale. The available space shown is believed to be correct but is subject to change.

# BUILDING 3

4201 LAKE BOONE TRAIL | RALEIGH, NC

## Suite 102 | 1,594 SF

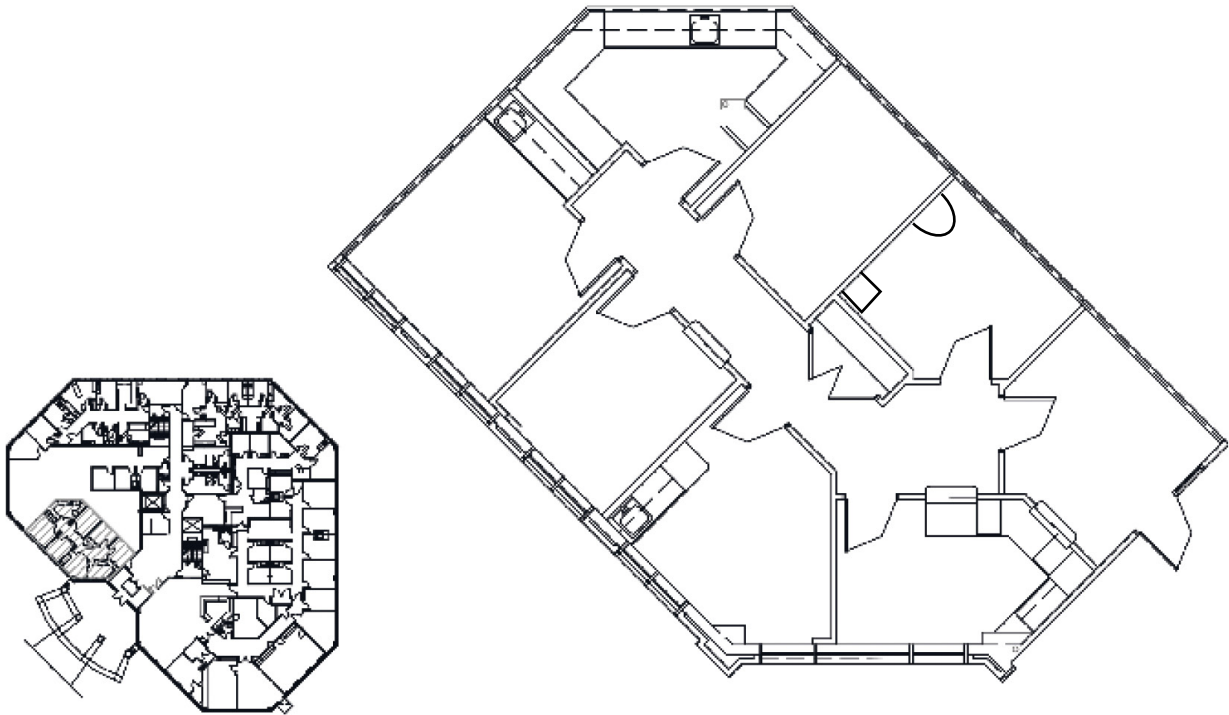


Disclaimer: The above floor plan is not to scale. The available space shown is believed to be correct but is subject to change.

# BUILDING 3

4201 LAKE BOONE TRAIL | RALEIGH, NC

Suite 107 | 1,319 SF



[CLICK FOR VIRTUAL TOUR](#) 

Disclaimer: The above floor plan is not to scale. The available space shown is believed to be correct but is subject to change.



## Contacts

**Sam DiFranco Jr., CCIM, SIOR**  
Principal  
(919) 604-2137  
[sdifrancojr@richcommercialrealty.com](mailto:sdifrancojr@richcommercialrealty.com)

**Dylan Heafner, CCIM, SIOR**  
Principal  
(919) 618-3026  
[dheafner@richcommercialrealty.com](mailto:dheafner@richcommercialrealty.com)

**Conley Moretz**  
Vice President  
(757) 817-1348  
[cmoretz@richcommercialrealty.com](mailto:cmoretz@richcommercialrealty.com)

### DISCLAIMER:

While we have made every attempt to ensure that the information contained herein is accurate, Rich Commercial Realty, LLC ("RCR") is not responsible for any errors or omissions, or for the results obtained from the use of this information. All information provided herein is provided with no guarantee of completeness, accuracy, or timeliness, and without warranty of any kind, express or implied, including, but not limited to warranties of performance, merchantability, and fitness for a particular purpose. We strongly recommend you and/or your advisory team perform a thorough review of the included property to determine its compatibility with your real estate goals and specifications. In no event will RCR, its partners, agents, or employees be liable to you or anyone else for any decision made or action taken in reliance on the information herein.



Call Our Office  
919.821.7880



Visit Our Website  
[richcommercialrealty.com](http://richcommercialrealty.com)



Follow RCR on LinkedIn  
[www.linkedin.com/company/  
2514132/admin/feed/posts/](http://www.linkedin.com/company/2514132/admin/feed/posts/)



**Raleigh, NC**  
3840 Ed Drive, Suite 108  
Raleigh, NC 27612

**Wilmington, NC**  
P.O. Box 15004  
Wilmington, NC 28412