



**8585 STEMMONS  
DALLAS, TX 75247**

**CONTACT INFO:**

**KOLBY DICKERSON**  
KDICKERSON@TXREPROPERTIES.COM  
214-534-1599

**GRANT GOMEZ**  
GRANT@TXREPROPERTIES.COM  
214-734-4725



**BUILDING  
INFORMATION**

- Fully Renovated in 2016
- Eleven-Story Office Towers
- 6:1,000 RSF Surface  
Parking Ratio
- Parking Garage Available
- Multiple Fiber Providers  
Available
- Access Control System
- Floor to Ceiling Windows
- Full Floor Leasing  
Opportunities

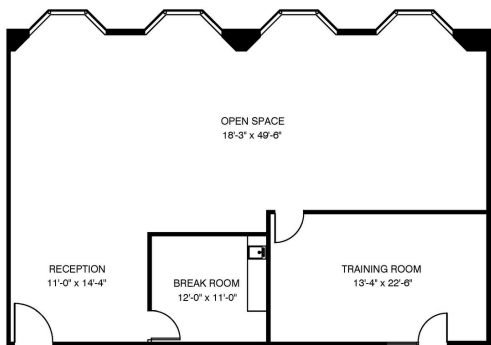
**AMENITIES**

- Fresh Deli
- Fitness Center with Shower Facilities
- Tenant Lounge
- Multiple Conference Centers
- On-Site Management, Security, and  
Engineering

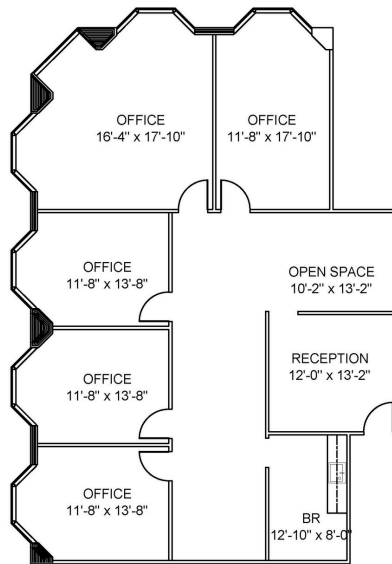
**LOCATION**

- Dart Access On-Site
- Located Directly off of I-35E and  
HWY-183
- 15 Minutes from Downtown Dallas
- 15 Minutes from DFW Airport
- 5 Minutes from Dallas Love Field
- Close Proximity to the Medical  
District of Dallas

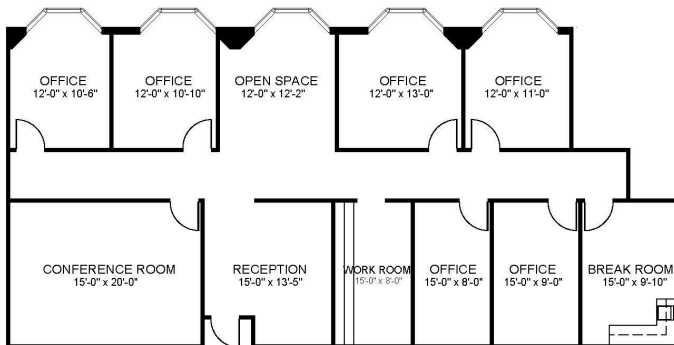
**MOVE-IN READY SUITES RANGING FROM  
1,000 – 60,000 RSF**



**Suite 100S**  
**1,947 RSF**



**Suite 440S**  
**2,267 RSF**



**Suite 250S**  
**2,618 RSF**

**LEASING INFORMATION**

**KOLBY DICKERSON**  
**KDICKERSON@TXREPROPERTIES.COM**  
**214-534-1599**

**GRANT GOMEZ**  
**GRANT@TXREPROPERTIES.COM**  
**214-734-4725**

