

## PREMIER OFFICE SPACE FOR LEASE



### SPACE HIGHLIGHTS

- **10,636 SF Available**
- **Free, Convenient On-site Parking**
- Positioned in a **well-maintained** and **secured** business park setting
- Accommodates large and small businesses
- Appropriate for high-tech, showroom, sales/service and office applications
- Prominent I-35 Building Signage
- **Google Fiber Available**
- **Clear visibility** and **instant accessibility** to I-35
- **Great location** central to the city's major thoroughfares; moments from the Plaza, Crown Center, Westport and Downtown

### LEASING CONTACT

**JEREMIAH DEAN, CCIM**

P (816) 701-5012

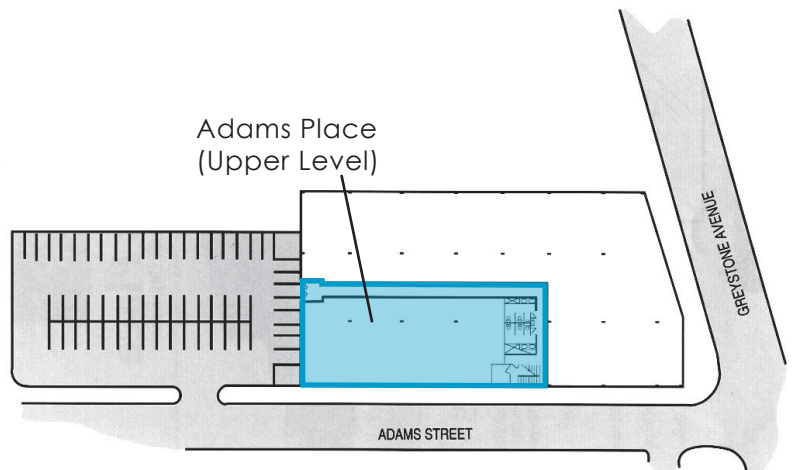
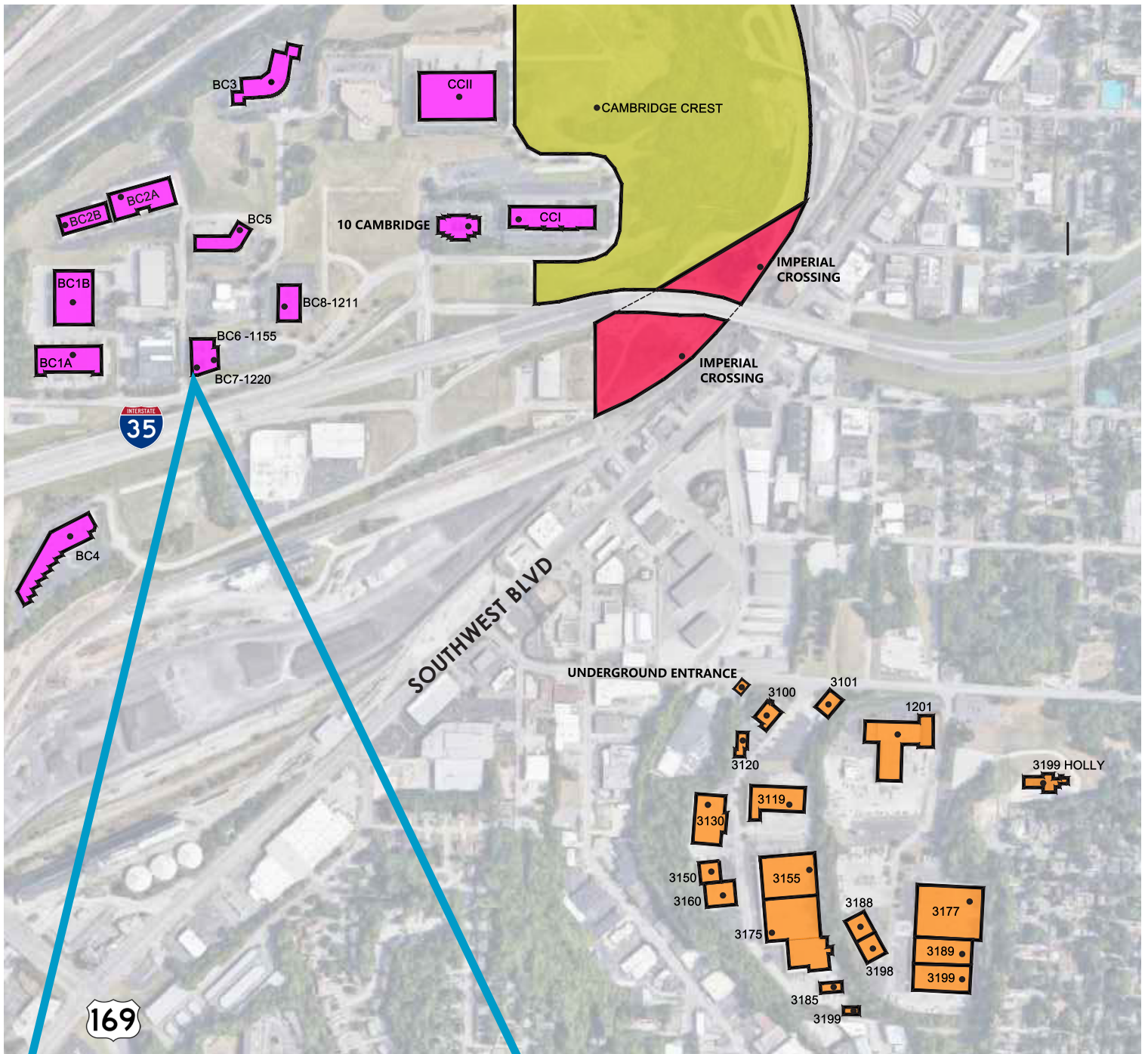
[jdean@copaken-brooks.com](mailto:jdean@copaken-brooks.com)

**MOLLY CRAWFORD MUNNINGHOFF**

P (816) 701-5013

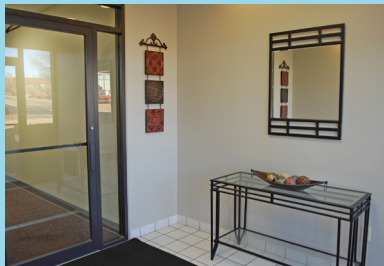
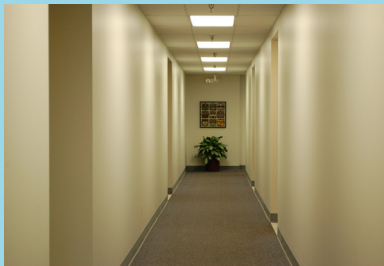
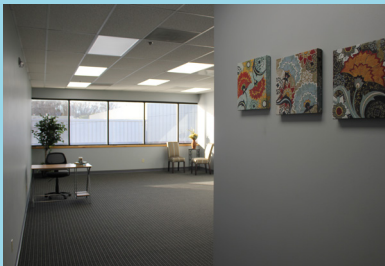
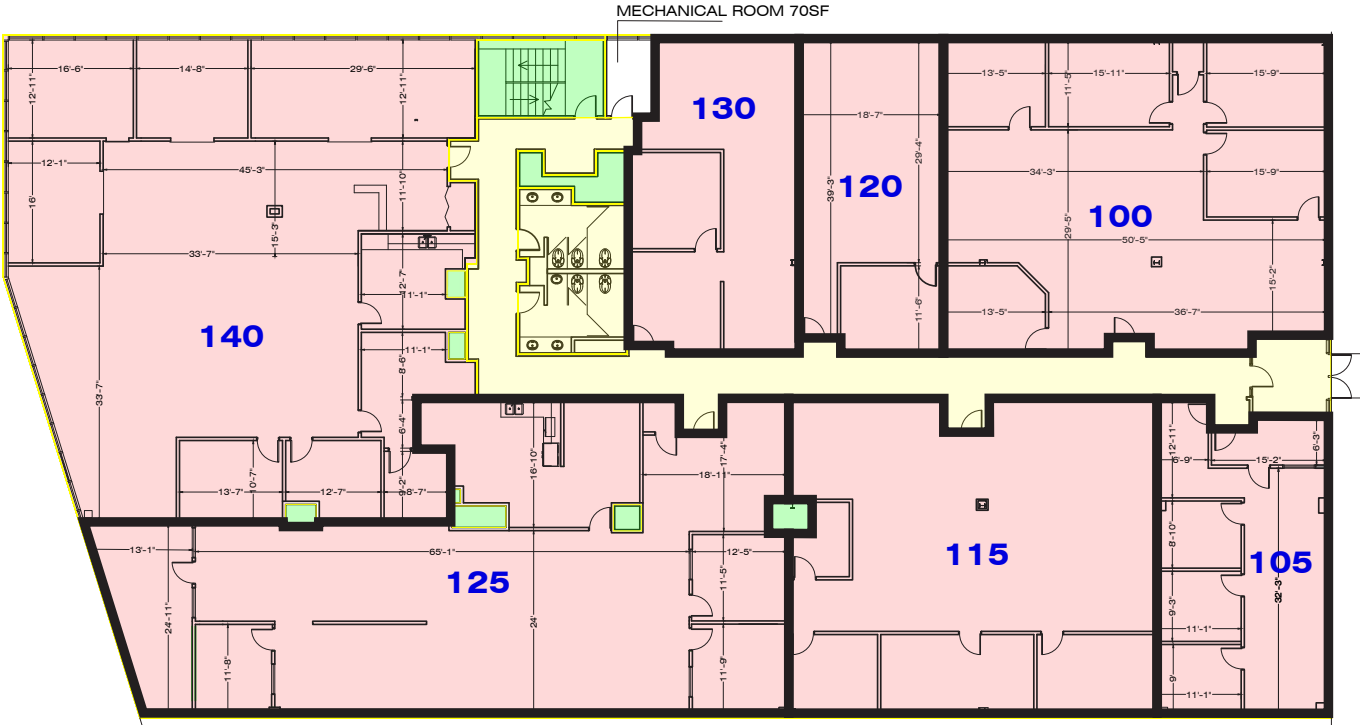
[mcrawford@copaken-brooks.com](mailto:mcrawford@copaken-brooks.com)

# LOCATION



# 1155 ADAMS STREET

<b>Total SF</b> (Contiguous or Divisible)	<b>10,636 SF</b>
<b>Suite 100</b>	2,329 SF
<b>Suite 105</b>	1,032 SF
<b>Suite 115</b>	2,214 SF
<b>Suite 120</b>	798 SF
<b>Suite 125</b>	3,273 SF
<b>Suite 130</b>	990 SF



# PREMIER OFFICE SPACE FOR LEASE



## LEASING CONTACT

**JEREMIAH DEAN, CCIM**

P (816) 701-5012

[jdean@copaken-brooks.com](mailto:jdean@copaken-brooks.com)

**MOLLY CRAWFORD MUNNINGHOFF**

P (816) 701-5013

[mcrawford@copaken-brooks.com](mailto:mcrawford@copaken-brooks.com)

All information furnished regarding property for sale or lease is from sources deemed reliable, but no warranty or representation is made as to the accuracy thereof and the same is subject to errors, omissions, changes of prices, rental or other conditions, prior sale or lease, or withdrawal without notice.