



FOR LEASE

7771 South Allen Street Midvale, UT 84111



- * **\$2,750.00/mo/N.N.N.**
- * **~2,068 total square feet (1,168 sq/ft in office and 900 sq/ft in warehouse)**
- * **One (1) 12x12 Grade Level Door (23' warehouse clear height)**
- * **Located In Midvale Business Park: Nicely landscaped, Gated, Fenced and Secure.**
- * **Two year old buildout (3 private offices, breakroom, private restroom and 1,000 square foot mezzanine storage.)**
- * **220 3 phase 150 amp panel**
- * **Convenient I-15 Access**

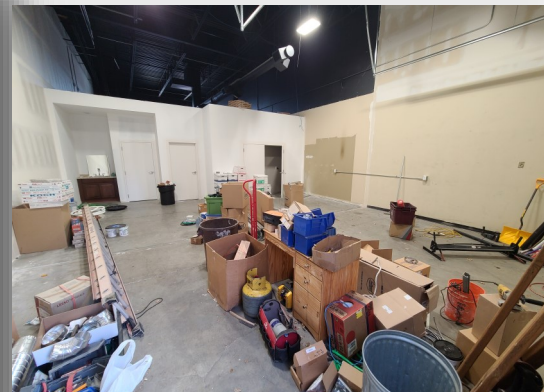
For more information please contact:

Office: (801) 571-1855

Spencer Romney: (801) 870-9119

Scott Romney: (801) 631-2008

 *Scott Romney
Investment Realty, Inc.*



For more information please contact:
Office: (801) 571-1855
Spencer Romney: (801) 870-9119
Scott Romney: (801) 631-2008

While the above information was obtained from sources deemed reliable, it is not guaranteed.

FLOORPLAN



For more information please contact:
 Office: (801) 571-1855
 Spencer Romney: (801) 870-9119
 Scott Romney: (801) 631-2008