

# 408 Metcalf Street, Suite C

Sedro-Woolley, WA 98284

## 6,233 SF FOR LEASE



**John Jones**

(425) 429-1912

[johnj@triplejprop.com](mailto:johnj@triplejprop.com)

[www.triplejprop.com](http://www.triplejprop.com)

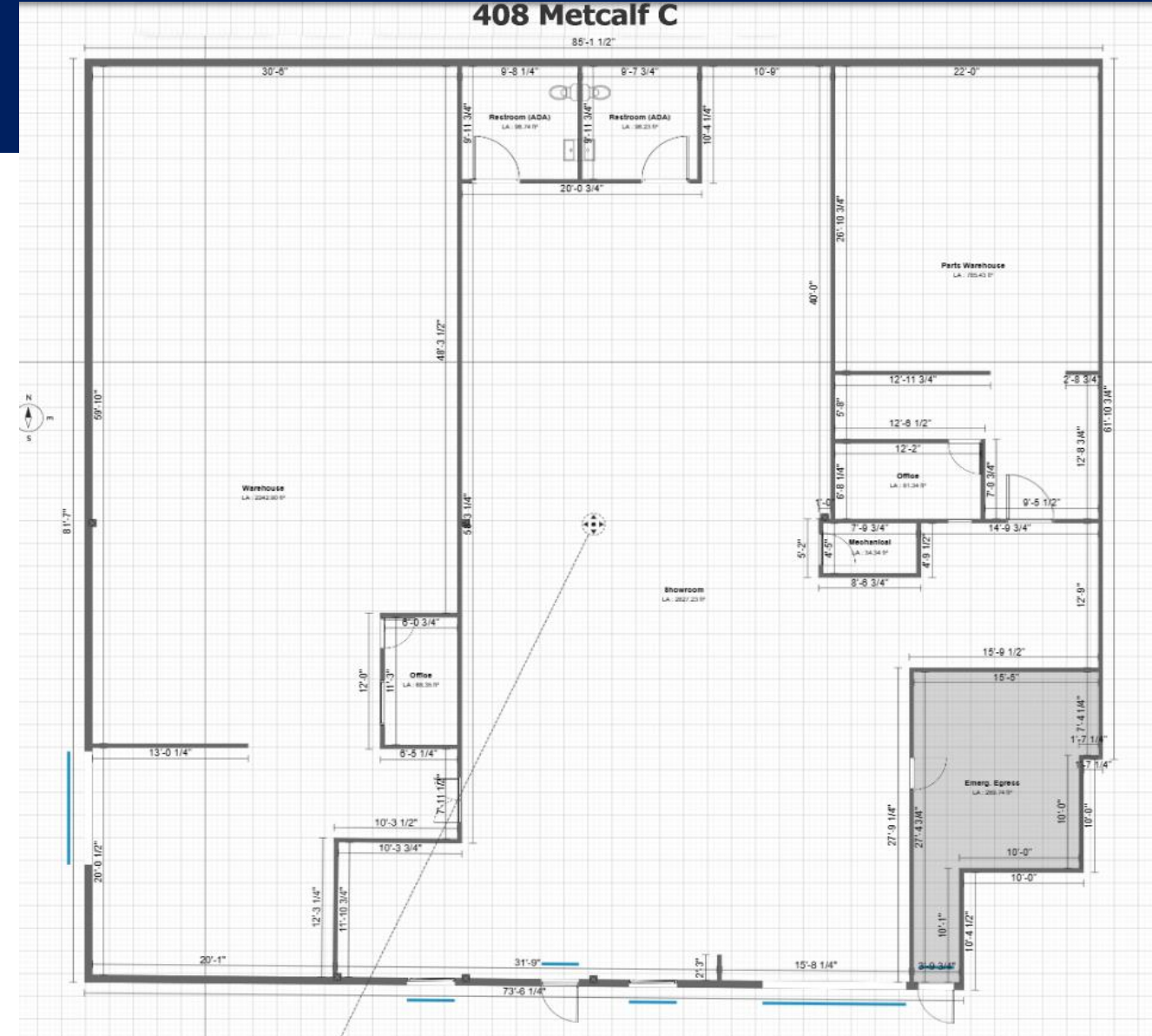


# 408 Metcalf Street, Suite C

Strategically positioned in the central business district of Sedro-Woolley, this is a rare opportunity to lease a highly functional retail and warehouse suite with ample on-site parking.

- 6,233 SF
- 16' Clear Height
- Two grade level roll up doors
- Two ADA-compliant restrooms
- Natural gas heat
- Fiber to building
- Zoning: Central Business District

Lease Rate: \$ 12.00/SF/YR, GROSS



John Jones

(425) 429-1912

[johnj@triplejprop.com](mailto:johnj@triplejprop.com)

[www.triplejprop.com](http://www.triplejprop.com)

The information supplied herein is from sources we deem reliable. It is provided without any representation, warranty, or guarantee, express or implied as to its accuracy. Prospective tenant should conduct a careful, independent investigation of the property and verify all information. Any reliance on this information is solely at your own risk.



# 408 Metcalf Street, Suite C

Sedro-Woolley sits less than five miles from Interstate 5 at the crossroads of Hwy 9 and SR20 (The North Cascades Highway).

The building is ideally located;

- Three blocks south of SR20
- Two blocks north of the quaint downtown retail core with ample shopping and dining options.
- On Metcalf Street, an established commercial and industrial corridor.



**John Jones**

(425) 429-1912

[johnj@triplejprop.com](mailto:johnj@triplejprop.com)

[www.triplejprop.com](http://www.triplejprop.com)

The information supplied herein is from sources we deem reliable. It is provided without any representation, warranty, or guarantee, express or implied as to its accuracy. Prospective tenant should conduct a careful, independent investigation of the property and verify all information. Any reliance on this information is solely at your own risk.

