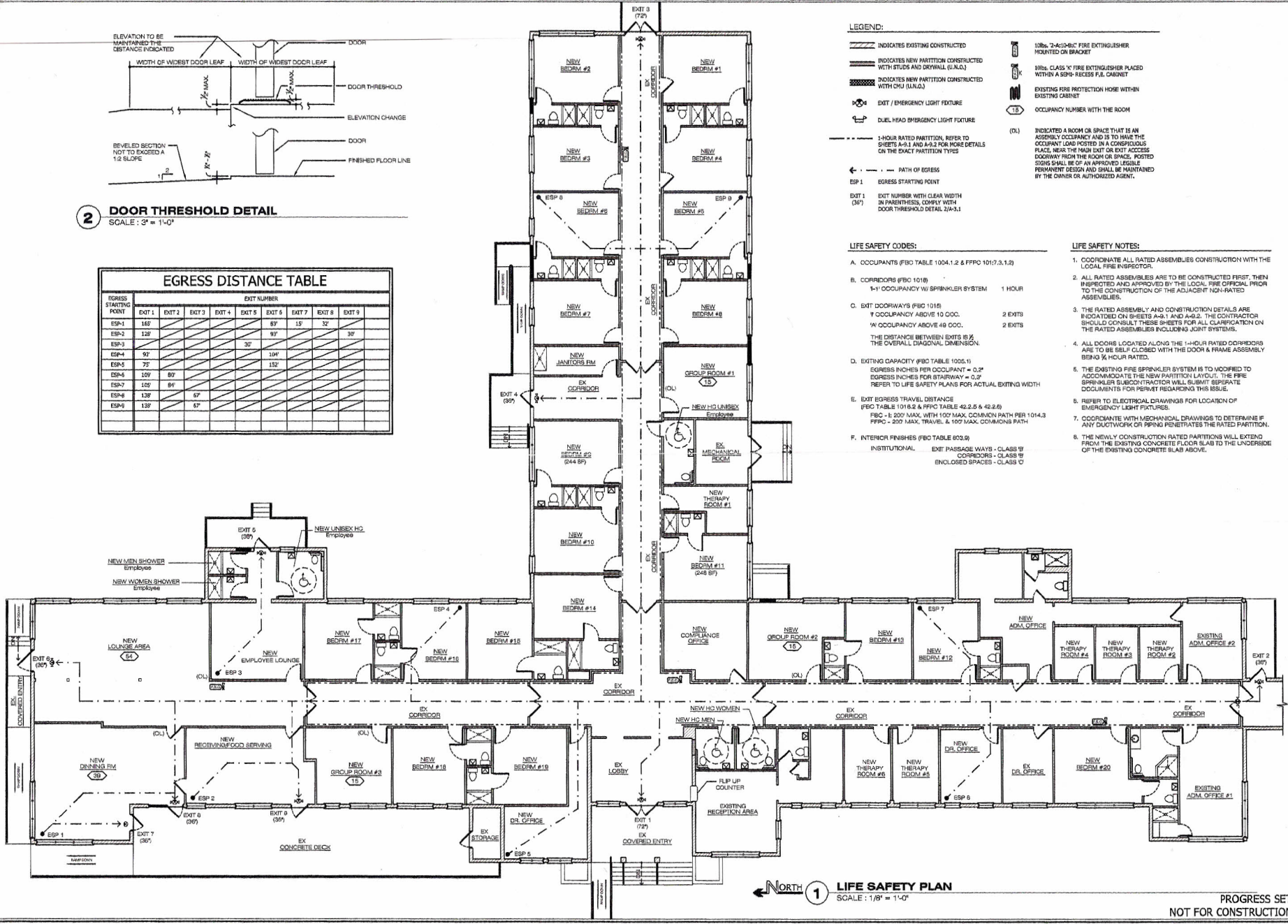


2 DOOR THRESHOLD DETAIL
SCALE: 3" = 1'-0"

EGRESS STARTING POINT	EXIT NUMBER								
	EXIT 1	EXIT 2	EXIT 3	EXIT 4	EXIT 5	EXIT 7	EXIT 8	EXIT 9	EXIT 9
ESP-1	162				87	15	32		
ESP-2	128				97			30	
ESP-3				30					
ESP-4	50				104				
ESP-5	72				132				
ESP-6	109	80							
ESP-7	109	84							
ESP-8	138		67						
ESP-9	138		67						



- LEGEND:**
- INDICATES EXISTING CONSTRUCTED
 - INDICATES NEW PARTITION CONSTRUCTED WITH STUDS AND DRYWALL (U.N.C.)
 - INDICATES NEW PARTITION CONSTRUCTED WITH CMU (U.N.C.)
 - EXIT / EMERGENCY LIGHT FIXTURE
 - DUAL HEAD EMERGENCY LIGHT FIXTURE
 - 1-HOUR RATED PARTITION. REFER TO SHEETS A-3.1 AND A-3.2 FOR MORE DETAILS ON THE EXACT PARTITION TYPES
 - EGRESS STARTING POINT
 - EXIT NUMBER WITH CLEAR WIDTH IN PARENTHESES, CORRELATE WITH DOOR THRESHOLD DETAIL 2/A-3.1
 - 10lb. 2-A-10-B-C FIRE EXTINGUISHER MOUNTED ON BRACKET
 - 10lb. CLASS 1C FIRE EXTINGUISHER PLACED WITHIN A SEMI-RECESS FULL CABINET
 - EXISTING FIRE PROTECTION HOSE WITHIN EXISTING CABINET
 - OCCUPANCY NUMBER WITH THE ROOM
 - INDICATED A ROOM OR SPACE THAT IS AN ASSEMBLY OCCUPANCY AND IS TO HAVE THE OCCUPANT LOAD POSTED IN A CONSPICUOUS PLACE, NEAR THE MAIN EXIT OR EXIT ACCESS DOORWAY FROM THE ROOM OR SPACE. POSTED SIGNS SHALL BE OF AN APPROVED LEGIBLE PERMANENT DESIGN AND SHALL BE MAINTAINED BY THE OWNER OR AUTHORIZED AGENT.

- LIFE SAFETY CODES:**
- A. OCCUPANTS (IFBC TABLE 1004.1.2 & IFPCO 1017.3.1.2)
 - B. CORRIDORS (IFBC 1018)
 - 1-H OCCUPANCY W/ SPRINKLER SYSTEM 1 HOUR
 - 2 OCCUPANCY ABOVE 10 COO. 2 EXITS
 - 3 OCCUPANCY ABOVE 40 COO. 2 EXITS
 - C. EXIT DOORWAYS (IFBC 1018)
 - THE DISTANCE BETWEEN EXITS IS 1/2 THE OVERALL DIAGONAL DIMENSION.
 - D. EXITING CAPACITY (IFBC TABLE 1005.1)
 - EGRESS INCHES PER OCCUPANT = 20"
 - EGRESS INCHES FOR STAIRWAY = 30"
 - REFER TO LIFE SAFETY PLANS FOR ACTUAL EXITING WIDTH
 - E. EXIT EGRESS TRAVEL DISTANCE (IFBC TABLE 1018.2 & IFPCO TABLE 42.2.5 & 42.2.6)
 - IFBC - 1: 200' MAX. WITH 100' MAX. COMMON PATH PER 1014.3
 - IFPCO - 200' MAX. TRAVEL & 100' MAX. COMMON PATH.
 - F. INTERIOR FINISHES (IFBC TABLE 603.9)
 - INSTITUTIONAL EXIT PASSAGE WAYS - CLASS 17
 - CORRIDORS - CLASS 17
 - ENCLOSED SPACES - CLASS 0

- LIFE SAFETY NOTES:**
1. COORDINATE ALL RATED ASSEMBLIES CONSTRUCTION WITH THE LOCAL FIRE INSPECTOR.
 2. ALL RATED ASSEMBLIES ARE TO BE CONSTRUCTED FIRST, THEN INSPECTED AND APPROVED BY THE LOCAL FIRE OFFICIAL PRIOR TO THE CONSTRUCTION OF THE ADJACENT NON-RATED ASSEMBLIES.
 3. THE RATED ASSEMBLY AND CONSTRUCTION DETAILS ARE INDICATED ON SHEETS A-4.1 AND A-4.2. THE CONTRACTOR SHOULD CONSULT THESE SHEETS FOR ALL CLARIFICATION ON THE RATED ASSEMBLIES INCLUDING JOINT SYSTEMS.
 4. ALL DOORS LOCATED ALONG THE 1-HOUR RATED CORRIDORS ARE TO BE SELF-CLOSED WITH THE DOOR & FRAME ASSEMBLY BEING 3/4 HOUR RATED.
 5. THE EXISTING FIRE SPRINKLER SYSTEM IS TO BE ADAPTED TO ACCOMMODATE THE NEW PARTITION LAYOUT. THE FIRE SPRINKLER SUBCONTRACTOR WILL SUBMIT SEPARATE DOCUMENTS FOR PERMIT REGARDING THIS ISSUE.
 6. REFER TO ELECTRICAL DRAWINGS FOR LOCATION OF EMERGENCY LIGHT FIXTURES.
 7. COORDINATE WITH MECHANICAL DRAWINGS TO DETERMINE IF ANY DUCTWORK OR PIPING PENETRATES THE RATED PARTITION.
 8. THE NEWLY CONSTRUCTION RATED PARTITIONS WILL EXTEND FROM THE EXISTING CONCRETE FLOOR SLAB TO THE UNDERSIDE OF THE EXISTING CONCRETE SLAB ABOVE.

1 LIFE SAFETY PLAN
SCALE: 1/8" = 1'-0"

PROGRESS SET
NOT FOR CONSTRUCTION

LINEA DESIGN NETWORK
ARCHITECTURAL & INTERIOR DESIGN
2056 Memorial Sun Lane
Naples, Florida 34119
ph: (239) 491-5472 email: support@lineadn.com

Memorial Remodeling
1201 S. Main St.
Belle Glade, Florida 33430

PASSAGE
CONSTRUCTION

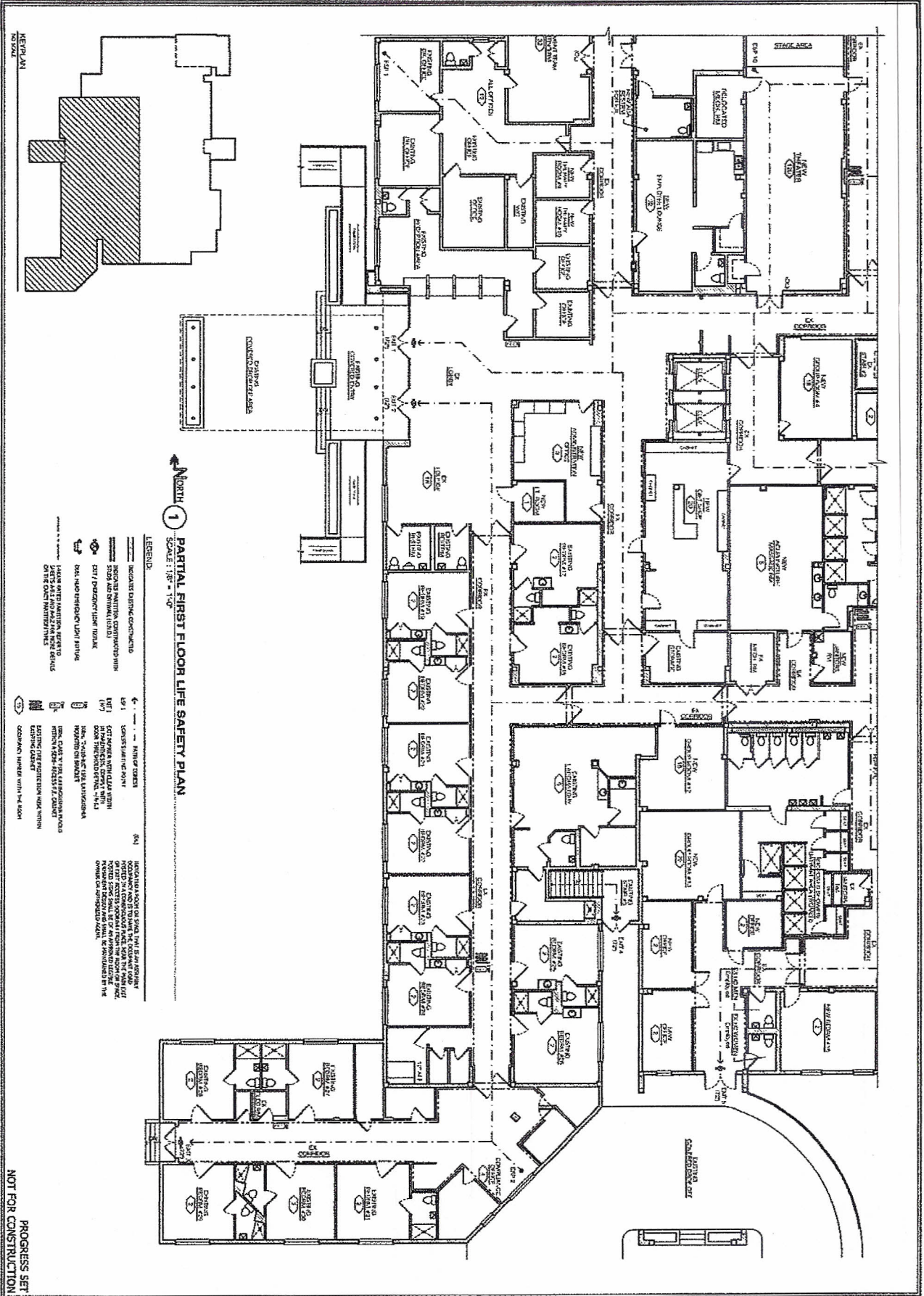
DATE	
DESCRIPTION	
DATE	
DESCRIPTION	

NOTES

1. REFER TO SHEETS A-3.1 & A-3.2 FOR REFERENCE TO RATED ASSEMBLY DETAILS.

© Copyright 2014
Linea Design Network
These drawings and its contents herein are the sole property of Linea Design Network and no portion of any may be printed or copied without the express permission of this design office.

DRAWN BY: SHS
SHEET DESCRIPTION: LIFE SAFETY PLAN
SHEET NO: A-3.1
PERMIT SET



PARTIAL FIRST FLOOR LIFE SAFETY PLAN
 SCALE: 1/8" = 1'-0"

- LEGEND:**
- INDICATES EXISTING COMPONENTS
 - INDICATES NEW COMPONENTS
 - INDICATES EXISTING WALLS
 - INDICATES NEW WALLS
 - INDICATES EXISTING DOORS
 - INDICATES NEW DOORS
 - INDICATES EXISTING WINDOWS
 - INDICATES NEW WINDOWS
 - INDICATES EXISTING STAIRS
 - INDICATES NEW STAIRS
 - INDICATES EXISTING ELEVATORS
 - INDICATES NEW ELEVATORS
 - INDICATES EXISTING ESCAPE ROUTES
 - INDICATES NEW ESCAPE ROUTES
 - INDICATES EXISTING EXIT DOORS
 - INDICATES NEW EXIT DOORS
 - INDICATES EXISTING EXIT WINDOWS
 - INDICATES NEW EXIT WINDOWS
 - INDICATES EXISTING EXIT ROOFS
 - INDICATES NEW EXIT ROOFS
 - INDICATES EXISTING EXIT STAIRS
 - INDICATES NEW EXIT STAIRS
 - INDICATES EXISTING EXIT ELEVATORS
 - INDICATES NEW EXIT ELEVATORS
 - INDICATES EXISTING EXIT ESCAPE ROUTES
 - INDICATES NEW EXIT ESCAPE ROUTES
 - INDICATES EXISTING EXIT ESCAPE WINDOWS
 - INDICATES NEW EXIT ESCAPE WINDOWS
 - INDICATES EXISTING EXIT ESCAPE STAIRS
 - INDICATES NEW EXIT ESCAPE STAIRS
 - INDICATES EXISTING EXIT ESCAPE ELEVATORS
 - INDICATES NEW EXIT ESCAPE ELEVATORS
 - INDICATES EXISTING EXIT ESCAPE ESCAPE ROUTES
 - INDICATES NEW EXIT ESCAPE ESCAPE ROUTES
 - INDICATES EXISTING EXIT ESCAPE ESCAPE WINDOWS
 - INDICATES NEW EXIT ESCAPE ESCAPE WINDOWS
 - INDICATES EXISTING EXIT ESCAPE ESCAPE STAIRS
 - INDICATES NEW EXIT ESCAPE ESCAPE STAIRS
 - INDICATES EXISTING EXIT ESCAPE ESCAPE ELEVATORS
 - INDICATES NEW EXIT ESCAPE ESCAPE ELEVATORS

PROGRESS SET
 NOT FOR CONSTRUCTION

<p>PROJECT: PARTIAL FIRST FLOOR LIFE SAFETY PLAN</p> <p>DATE: 10/1/01</p> <p>SCALE: 1/8" = 1'-0"</p> <p>REV: A-3.1</p>	<p>NOTES:</p> <p>1. REFER TO SHEET A-3.2 FOR ADDITIONAL NOTES.</p> <p>2. ALL WORK SHALL BE IN ACCORDANCE WITH THE LATEST EDITIONS OF THE IBC AND NFPA 101.</p> <p>3. ALL WORK SHALL BE IN ACCORDANCE WITH THE LATEST EDITIONS OF THE IBC AND NFPA 101.</p>	<p>OWNER: [Redacted]</p> <p>ARCHITECT: [Redacted]</p> <p>DATE: 10/1/01</p>	<p>Remodeling</p> <p>1201 S. Main St. Belle Glade, Florida 33430</p>	<p>LINEA DESIGN</p> <p>ARCHITECTURAL & INTERIOR DESIGN</p> <p>2656 Haring Sun Lane Naples, Florida 34119 License No. AR17592</p> <p>PH: (239) 484-5475 email: stephen@lineadn.com</p>
--	--	--	--	---

